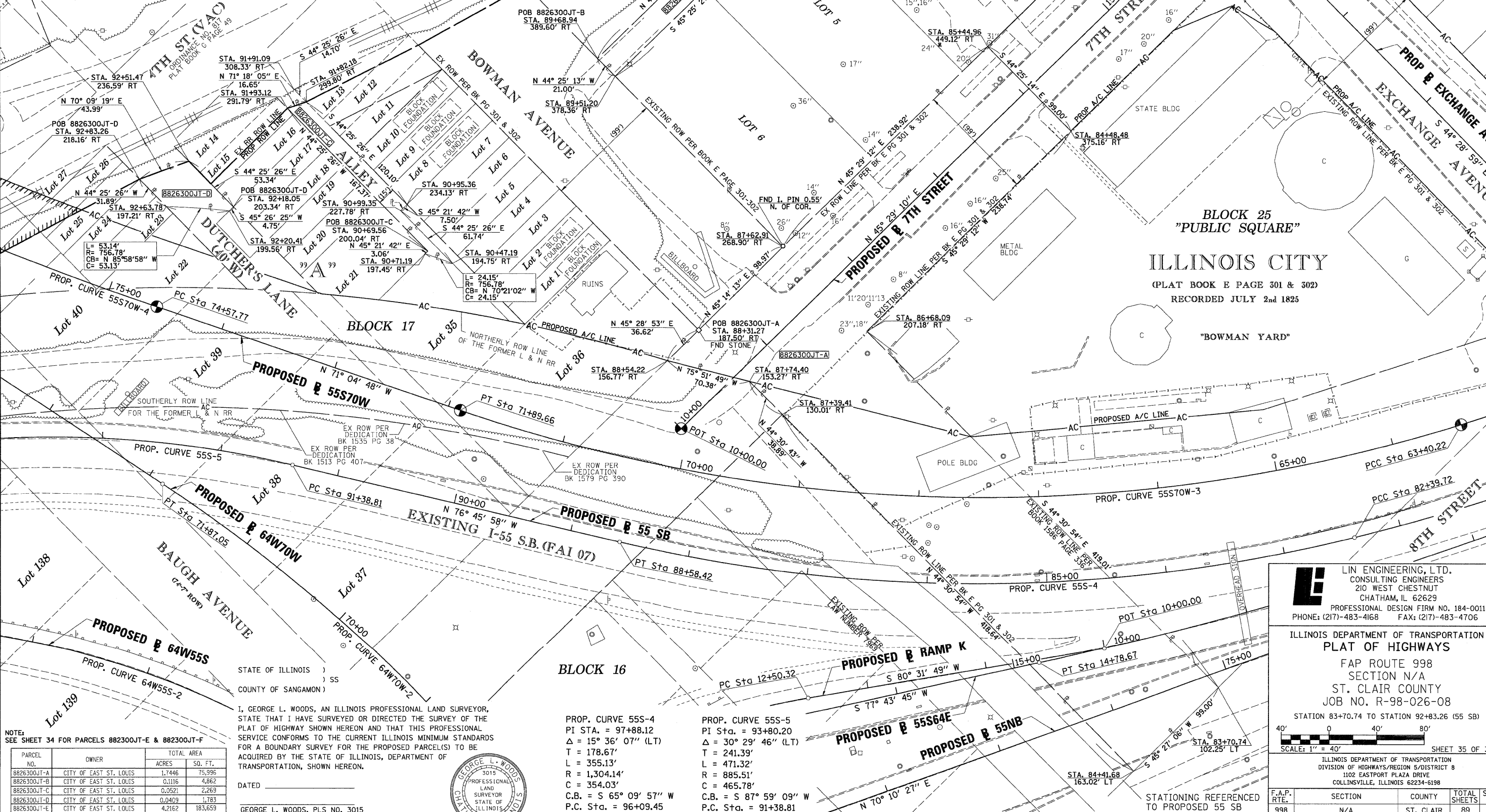


"A"
 FISCHER SCHEIN CO'S SUBD
 OF LOTS 33 & 34 AND PARTS
 OF LOTS 35, 39, & 40 OF BLOCK 17
 ILLINOIS CITY EAST ST. LOUIS ILLS.

PLAT BOOK P PAGE 56
 RECORDED 27th JULY 1910



SPACE RESERVED FOR RECORDING OFFICER

BLOCK 25
 "PUBLIC SQUARE"
 ILLINOIS CITY
 (PLAT BOOK E PAGE 301 & 302)
 RECORDED JULY 2nd 1825
 "BOWMAN YARD"

STATE OF ILLINOIS)
 COUNTY OF SANGAMON)
 I, GEORGE L. WOODS, AN ILLINOIS PROFESSIONAL LAND SURVEYOR,
 STATE THAT I HAVE SURVEYED OR DIRECTED THE SURVEY OF THE
 PLAT OF HIGHWAY SHOWN HEREON AND THAT THIS PROFESSIONAL
 SERVICE CONFORMS TO THE CURRENT ILLINOIS MINIMUM STANDARDS
 FOR A BOUNDARY SURVEY FOR THE PROPOSED PARCEL(S) TO BE
 ACQUIRED BY THE STATE OF ILLINOIS, DEPARTMENT OF
 TRANSPORTATION, SHOWN HEREON.



PROP. CURVE 55S-4
 PI Sta. = 97+88.12
 Δ = 15° 36' 07" (LT)
 T = 178.67'
 L = 355.13'
 R = 1,304.14'
 C = 354.03'
 C.B. = S 65° 09' 57" W
 P.C. Sta. = 96+09.45
 P.T. Sta. = 99+64.57

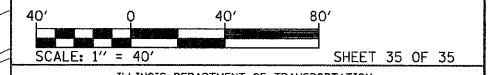
PROP. CURVE 55S-5
 PI Sta. = 93+80.20
 Δ = 30° 29' 46" (LT)
 T = 241.39'
 L = 471.32'
 R = 885.51'
 C = 465.78'
 C.B. = S 87° 59' 09" W
 P.C. Sta. = 91+38.81
 P.T. Sta. = 96+10.13

NOTE:
 SEE SHEET 34 FOR PARCELS 882300JT-E & 882300JT-F

PARCEL NO.	OWNER	TOTAL AREA ACRES	SQ. FT.
8826300JT-A	CITY OF EAST ST. LOUIS	1.7446	75,996
8826300JT-B	CITY OF EAST ST. LOUIS	0.1116	4,862
8826300JT-C	CITY OF EAST ST. LOUIS	0.0521	2,269
8826300JT-D	CITY OF EAST ST. LOUIS	0.0409	1,783
8826300JT-E	CITY OF EAST ST. LOUIS	4.2162	183,659

Lin Engineering, Ltd.
 CONSULTING ENGINEERS
 210 WEST CHESTNUT
 CHATHAM, IL 62629
 PROFESSIONAL DESIGN FIRM NO. 184-001181
 PHONE: (217)-483-4168 FAX: (217)-483-4706

ILLINOIS DEPARTMENT OF TRANSPORTATION
 PLAT OF HIGHWAYS
 FAP ROUTE 998
 SECTION N/A
 ST. CLAIR COUNTY
 JOB NO. R-98-026-08



F.A.P. RTE.	SECTION	COUNTY	TOTAL SHEETS	SHEET NO.
998	N/A	ST. CLAIR	89	89

CONTRACT NO. _____

COMPLETION DATE OF FIELD WORK PERFORMED	
LAND SURVEY: OCT./2009	ROW STAKING: OCT./2009

PLOT DATE = 10/15/2009
 FILE NAME = 8FILE8
 PLOT SCALE = 8SCALE8
 USER NAME = 8USER8