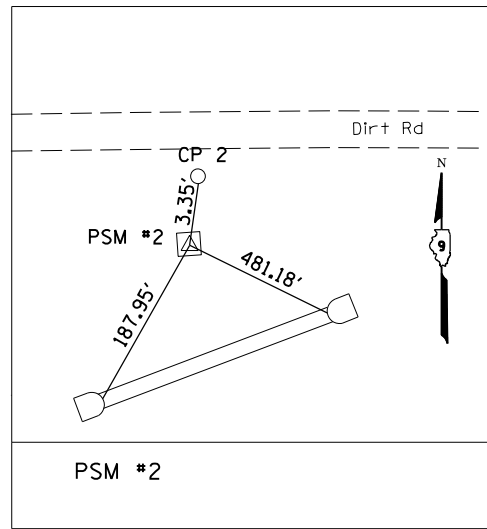


PSM #1
N: 503699.8472
E: 855514.0259
ELEV: 408.94



PSM #2

| | | | |
|---|------------------------------|------------|-----------|
| FILE NAME = | USER NAME = \$USER\$ | DESIGNED - | REVISED - |
| ct:\pw\work\p\dot\lavenderba\d0277604\78278--sh\details.dgn | | DRAWN - | REVISED - |
| | PLOT SCALE = 100.0000' / in. | CHECKED - | REVISED - |
| | PLOT DATE = 3/20/2012 | DATE - | REVISED - |

**STATE OF ILLINOIS
DEPARTMENT OF TRANSPORTATION**

**EXISTING PERMANENT SURVEY
MARKER TIES (CONTROL POINTS)**

SCALE: SHEET NO. OF SHEETS STA. TO STA.

| F.A.P. RTE. | SECTION | COUNTY | TOTAL SHEETS | SHEET NO. |
|---------------------------|---------|----------|--------------------|-----------|
| 853 | | FRANKLIN | 86 | 8 |
| | | | CONTRACT NO. 78278 | |
| ILLINOIS FED. AID PROJECT | | | | |