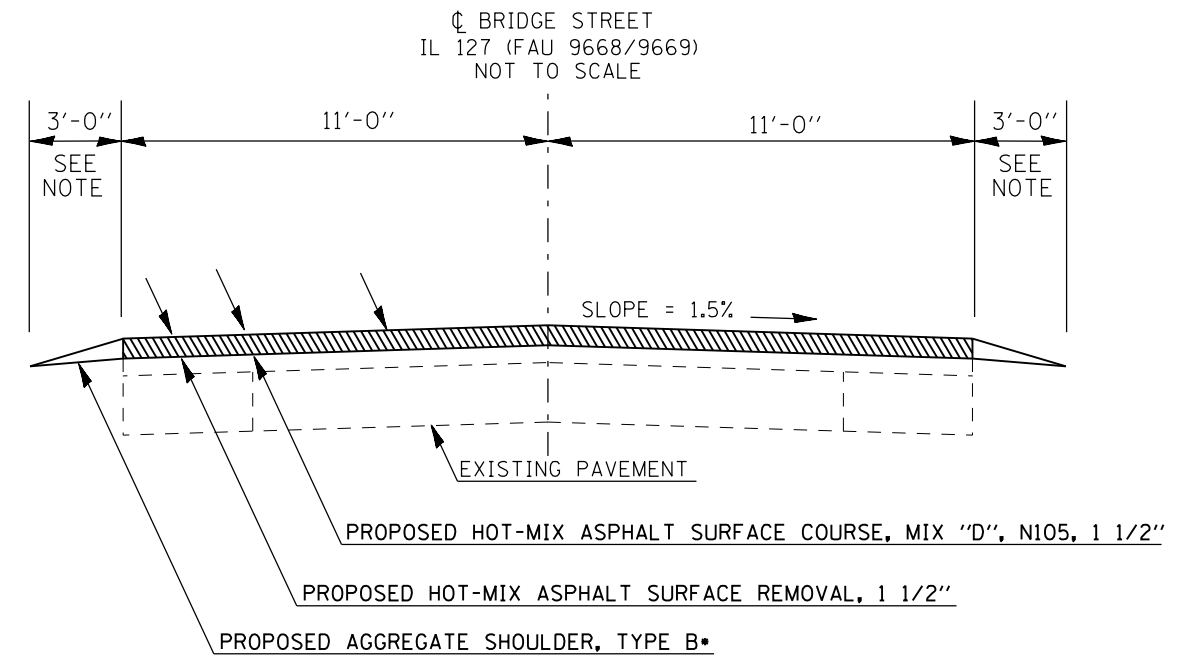
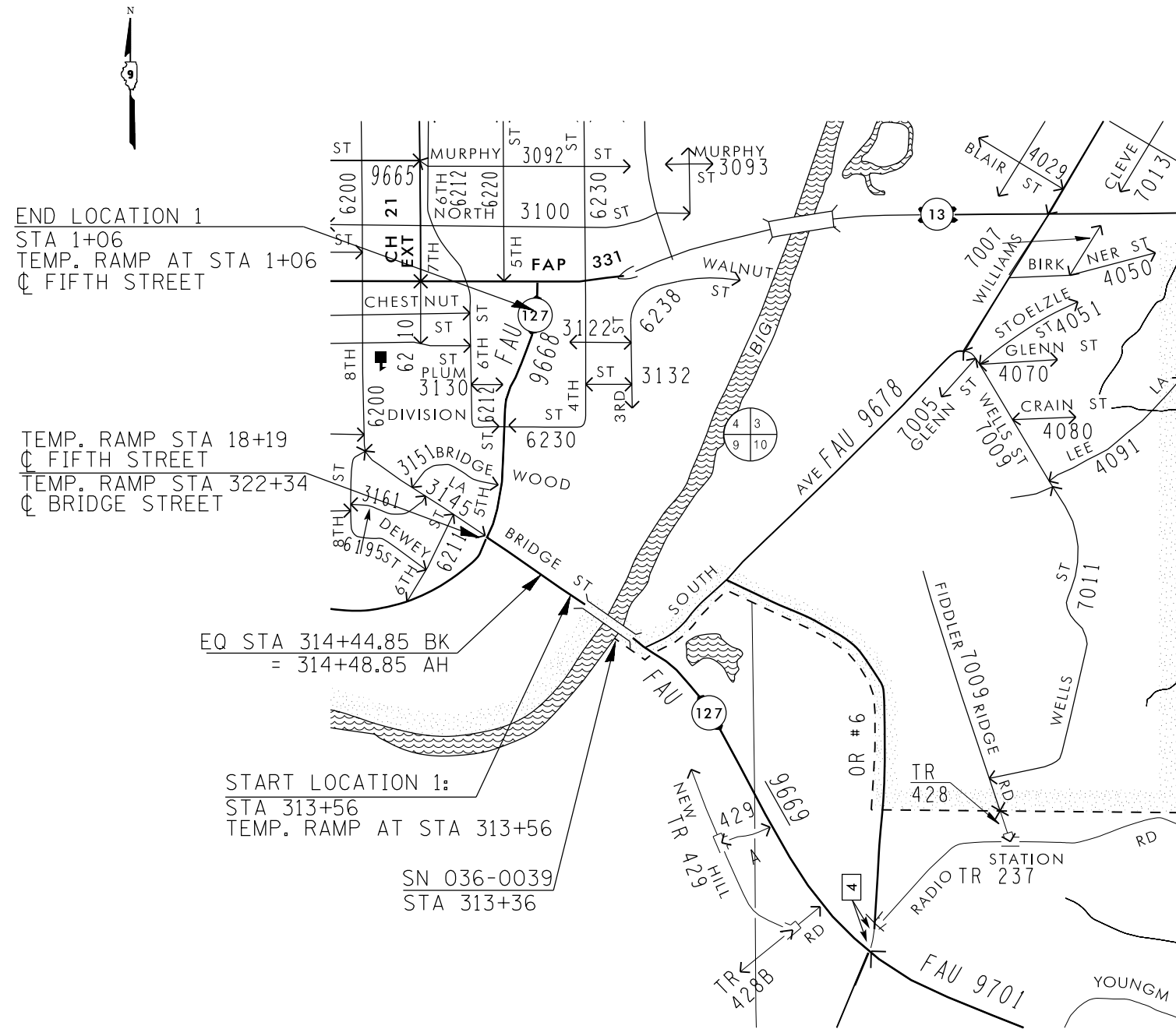


LOCATION 1 MAP AND TYPICAL SECTION IL 127 (FAU 9668/9669) AT MURPHYSBORO



TO BE USED:

- STA. 313+56 TO STA. 320+35
- STA. 320+35 TO STA. 322+02
- STA. 322+02 TO STA. 322+34

NOTE: STA. 320+35 TO STA. 322+02
INTERSECTION LIMITS OF FIFTH STREET.

FILE NAME =	USER NAME = *USER*	DESIGNED -	REVISED -	STATE OF ILLINOIS DEPARTMENT OF TRANSPORTATION	LOCATION 1 MAP & TYPICAL SECTION	SCALE:		SHEET	OF SHEETS	STA.	TO STA.	*FAP 42/FAU 9668/9669	*PERRY & JACKSON	
ci:\pw\work\p1dot\lavenderba\d0302467\78292-sht-plan.dgn		DRAWN -	REVISED -			F.A. RTE.	SECTION	COUNTY	TOTAL SHEETS	SHEET NO.			19	11
		CHECKED -	REVISED -			(8,103) RS-2; (12-2) RS-1	•	•					CONTRACT NO. 78292	
		DATE -	REVISED -											ILLINOIS FED. AID PROJECT