

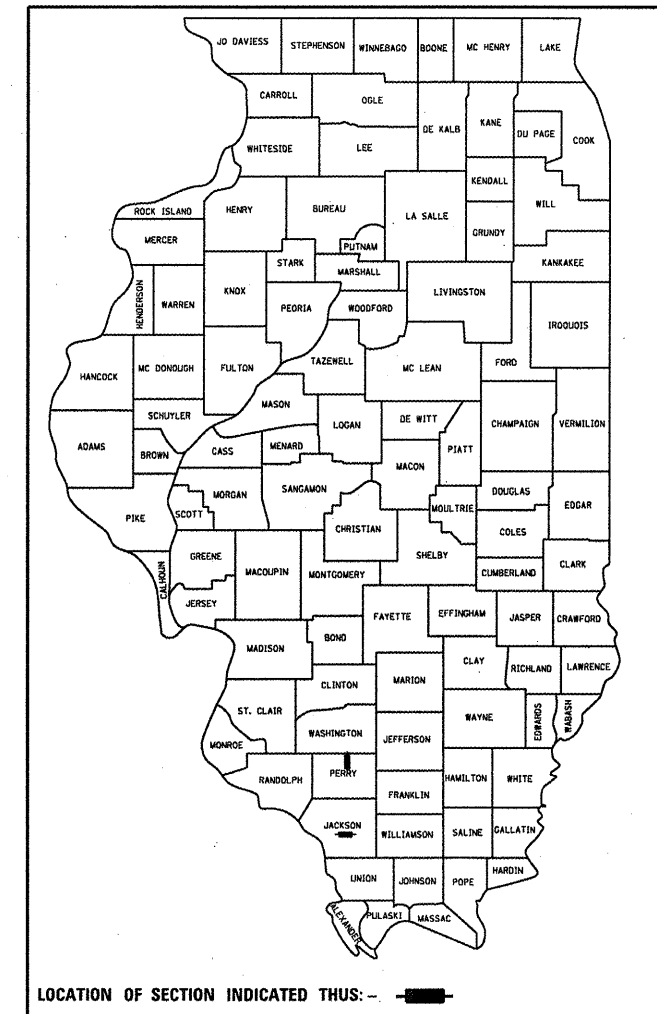
STATE OF ILLINOIS  
DEPARTMENT OF TRANSPORTATION  
DIVISION OF HIGHWAYS

**PROPOSED  
HIGHWAY PLANS**

F.A.P. RTE.	SECTION	COUNTY	TOTAL SHEETS	SHEET NO.
•	(8,103) RS-2; (12-2) RS-1	•	19	1
		ILLINOIS	CONTRACT NO. 78292	

•FAP 42/FAU 9668/9669 •PERRY & JACKSON

D-99-016-12



LOCATION OF SECTION INDICATED THIS: —

FOR INDEX OF SHEETS, SEE SHEET NO. 3

TRAFFIC COUNT  
LOCATION 1

	2012	2032
PV=	5,080	6,200
MU=	70	85
SU=	200	245
ADT=	5,350	6,530

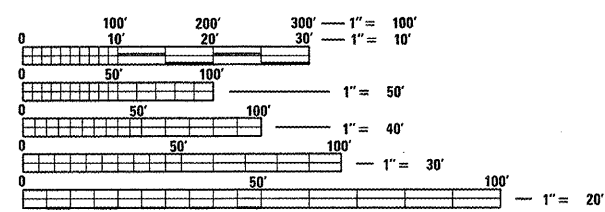
LOCATION 2

	2012	2032
PV=	7,210	8,795
MU=	190	235
SU=	330	400
ADT=	7,730	9,430

LOCATION 3

	2012	2032
PV=	4,595	5,605
MU=	255	310
SU=	150	185
ADT=	5,000	6,100

TOWNSHIPS  
MURPHYSBORO  
PERRY CO UNIT ROAD DIST.



FULL SIZE PLANS HAVE BEEN PREPARED USING STANDARD ENGINEERING SCALES. REDUCED SIZED PLANS WILL NOT CONFORM TO STANDARD SCALES. IN MAKING MEASUREMENTS ON REDUCED PLANS, THE ABOVE SCALES MAY BE USED.

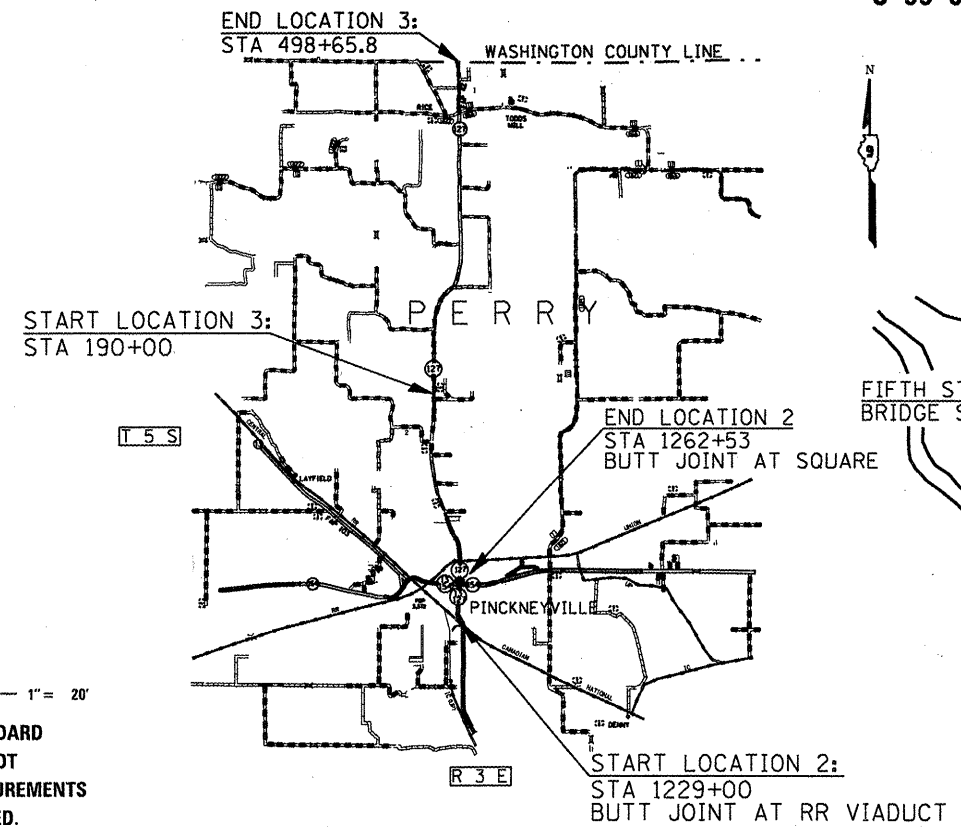
J.U.L.I.E.  
JOINT UTILITY LOCATION INFORMATION FOR EXCAVATION  
1-800-892-0123  
OR 811

PROJECT ENGINEER: CHARLES STEIN 618-551-5210  
PROJECT MANAGER: ALEC LENZINI & ERIC DELL'ARINGA

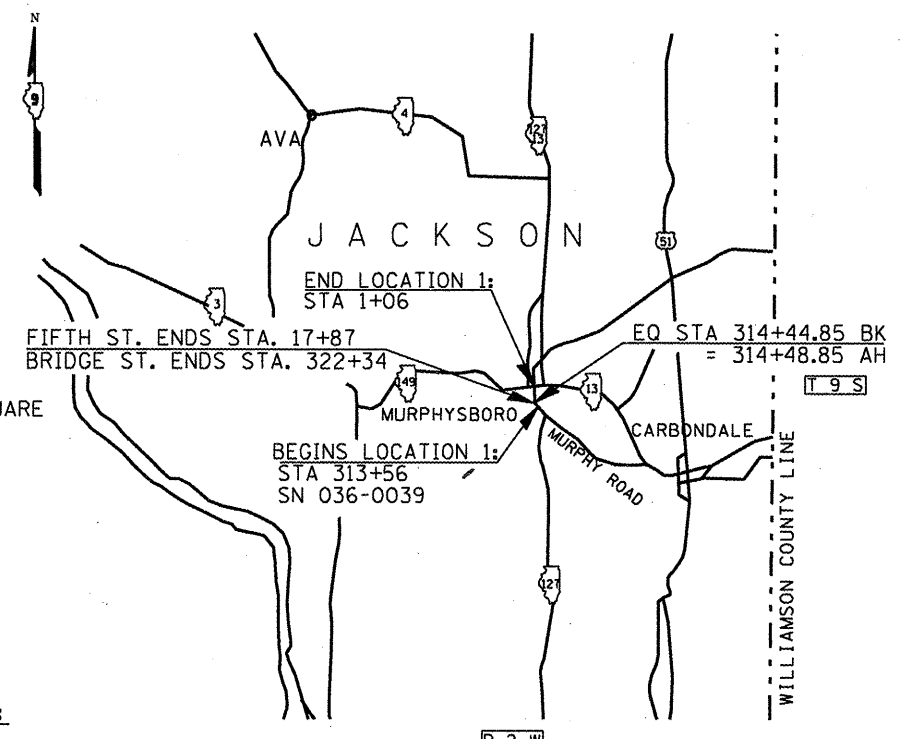
CONTRACT NO. 78292

ROUTE F.A.P. 42 & F.A.U. 9668/9669 (IL 127 & IL 13/127)  
SECTION (8,103) RS-2; (12-2) RS-1  
PROJECT F-NHF-0003(898)  
PATCHING & RESURFACING  
PERRY & JACKSON COUNTIES

C-99-020-12



LOCATION 2 & 3



LOCATION 1

GROSS LENGTH = 36,706.15 FT. = 6.95 MILE  
NET LENGTH = 36,320.75 FT. = 6.88 MILE

\*SEE SHEET NO. 3 FOR BREAKDOWN OF LENGTHS, OMISSIONS, & STATION EQUATIONS

STATE OF ILLINOIS  
DEPARTMENT OF TRANSPORTATION  
DIVISION OF HIGHWAYS

SUBMITTED March 22 20 12  
Chris Carman  
DEPUTY DIRECTOR OF HIGHWAYS, REGION ENGINEER

May 11 20 12  
John D. Baranzelli, P.E.  
acting ENGINEER OF DESIGN AND ENVIRONMENT

May 11 20 12  
William R. Frey  
acting DIRECTOR OF HIGHWAYS, CHIEF ENGINEER

**PRINTED BY THE AUTHORITY  
OF THE STATE OF ILLINOIS**