

STATE OF ILLINOIS  
DEPARTMENT OF TRANSPORTATION  
DIVISION OF HIGHWAYS

**PROPOSED  
HIGHWAY PLANS**

F.A.P. RTE.	SECTION	COUNTY	TOTAL SHEETS	SHEET NO.
•	(8,103) RS-2; (12-2) RS-1	•	19	1
ILLINOIS		CONTRACT NO. 78292		

•FAP 42/FAU 9668/9669 •PERRY & JACKSON

FOR INDEX OF SHEETS, SEE SHEET NO. 3

TRAFFIC COUNT  
LOCATION 1

	2012	2032
PV=	5,080	6,200
MU=	70	85
SU=	200	245
ADT=	5,350	6,530

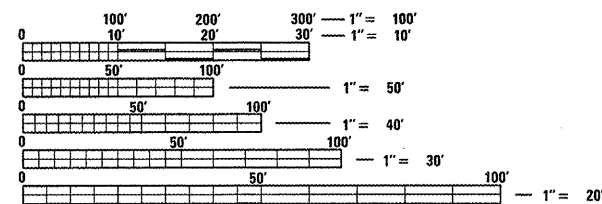
LOCATION 2

	2012	2032
PV=	7,210	8,795
MU=	190	235
SU=	330	400
ADT=	7,730	9,430

LOCATION 3

	2012	2032
PV=	4,595	5,605
MU=	255	310
SU=	150	185
ADT=	5,000	6,100

TOWNSHIPS  
MURPHYSBORO  
PERRY CO UNIT ROAD DIST.



FULL SIZE PLANS HAVE BEEN PREPARED USING STANDARD ENGINEERING SCALES. REDUCED SIZED PLANS WILL NOT CONFORM TO STANDARD SCALES. IN MAKING MEASUREMENTS ON REDUCED PLANS, THE ABOVE SCALES MAY BE USED.

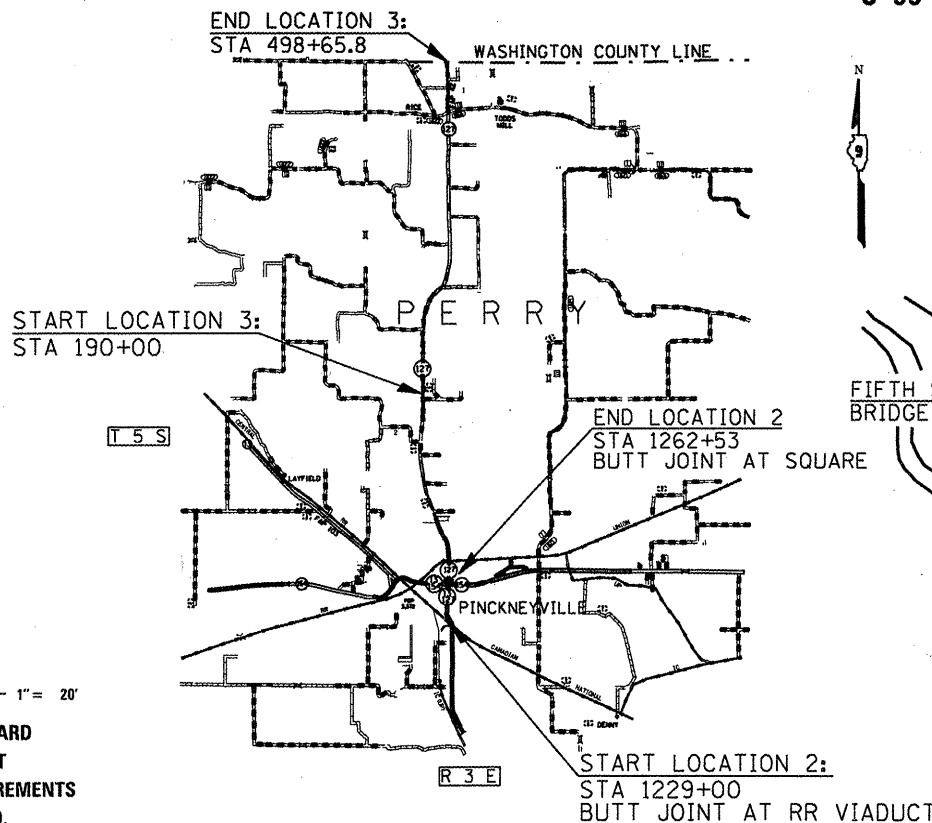
J.U.L.I.E.  
JOINT UTILITY LOCATION INFORMATION FOR EXCAVATION  
1-800-892-0123  
OR 811

PROJECT ENGINEER: CHARLES STEIN 618-551-5210  
PROJECT MANAGER: ALEC LENZINI & ERIC DELL'ARINGA

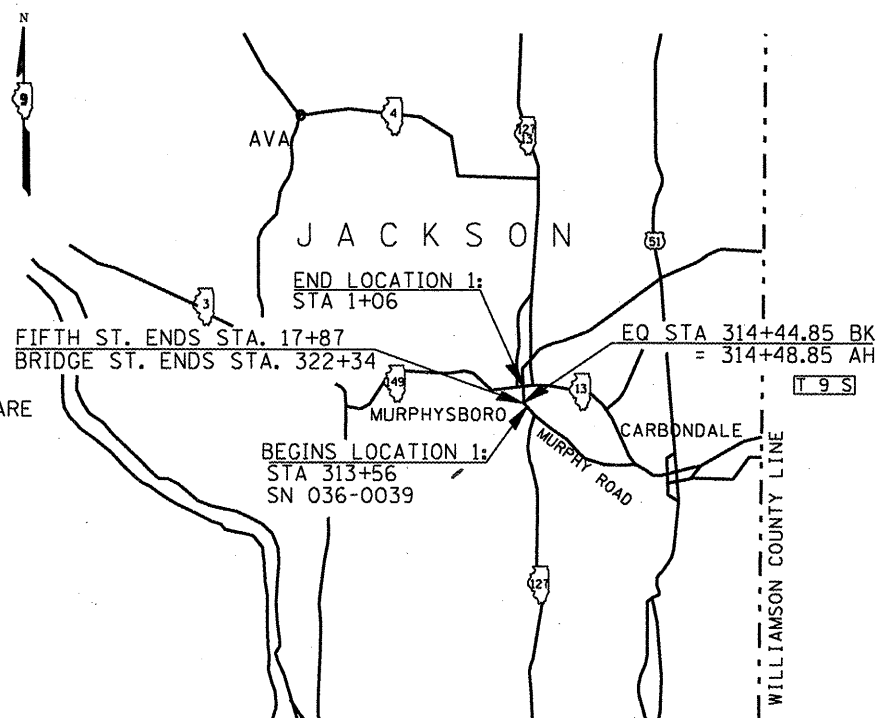
CONTRACT NO. 78292

ROUTE F.A.P. 42 & F.A.U. 9668/9669 (IL 127 & IL 13/127)  
SECTION (8,103) RS-2; (12-2) RS-1  
PROJECT F-NHF-0003(898)  
PATCHING & RESURFACING  
PERRY & JACKSON COUNTIES

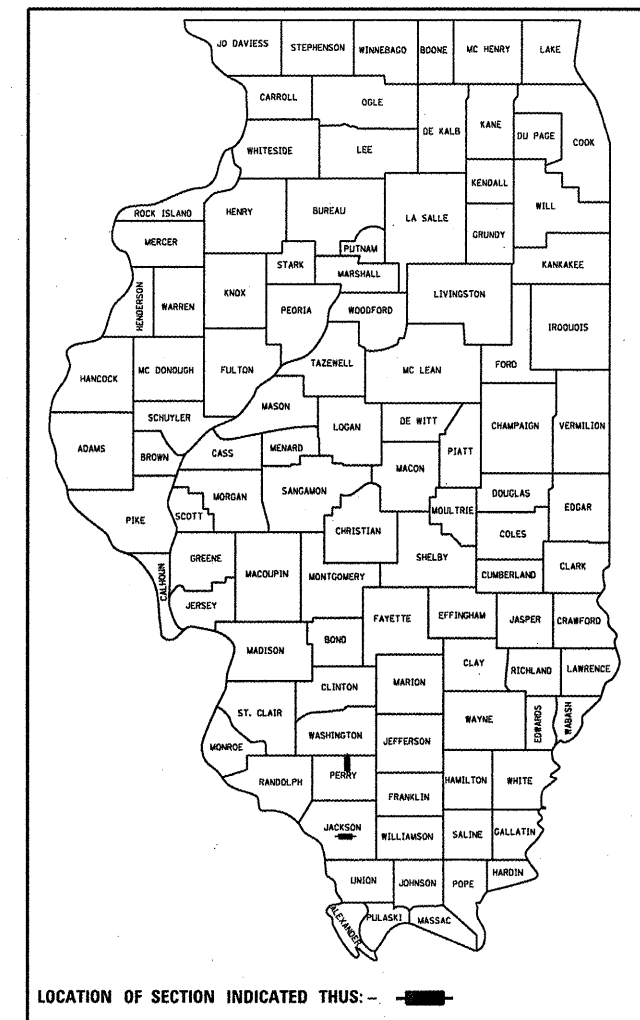
C-99-020-12



LOCATION 2 & 3



LOCATION 1



STATE OF ILLINOIS  
DEPARTMENT OF TRANSPORTATION  
DIVISION OF HIGHWAYS

SUBMITTED March 22 20 12  
Chris Amann  
DEPUTY DIRECTOR OF HIGHWAYS, REGION ENGINEER

May 11 20 12  
John D. Baranzelli, P.E.  
acting ENGINEER OF DESIGN AND ENVIRONMENT

May 11 20 12  
William R. Frey  
acting DIRECTOR OF HIGHWAYS, CHIEF ENGINEER

PRINTED BY THE AUTHORITY  
OF THE STATE OF ILLINOIS

\*SEE SHEET NO. 3 FOR BREAKDOWN OF LENGTHS, OMISSIONS, & STATION EQUATIONS

GROSS LENGTH = 36,706.15 FT. = 6.95 MILE  
NET LENGTH = 36,320.75 FT. = 6.88 MILE

Prepared By: Joe Zdaniewicz  
DISTRICT STUDIES & PLANS ENGINEER

Examined By: Jo Li Eng  
DISTRICT LAND ACQUISITION ENGINEER

Examined By: Carrie Nuber  
DISTRICT PROGRAM DEVELOPMENT ENGINEER

Examined By: Karl Kelly  
DISTRICT OPERATIONS ENGINEER

Examined By: KR  
DISTRICT PROJECT IMPLEMENTATION ENGINEER

Examined By: Douglas Tuller  
DISTRICT CONSTRUCTION ENGINEER

Examined By: Bruce Pappas (PB)  
DISTRICT MATERIALS ENGINEER

Approved By: Omer Osman  
DEPUTY DIRECTOR OF HIGHWAYS, REGION 5 ENGINEER

March 12 2012  
DATE

FILE NAME =	USER NAME = LENZINIAD	DESIGNED -	REVISED -
of:\pwork\pwork\lenziniad\08292729\7897-design\dgn		DRAWN -	REVISED -
	PLOT SCALE = 100.0000' / 1"	CHECKED -	REVISED -
	PLOT DATE = 3/6/2012	DATE -	REVISED -

**STATE OF ILLINOIS  
DEPARTMENT OF TRANSPORTATION**

**SIGNATURE SHEET**

SCALE: \_\_\_\_\_ SHEET \_\_\_\_\_ OF \_\_\_\_\_ SHEETS STA. \_\_\_\_\_ TO STA. \_\_\_\_\_

*FAP 42/FAU 9668/9669		*PERRY & JACKSON	
F.A. RTE.	SECTION	COUNTY	TOTAL SHEETS
*	(8,103) RS-2; (12-2) RS-1	*	19
			SHEET NO. 2
CONTRACT NO. 78292			
ILLINOIS FED. AID PROJECT			

INDEX OF SHEETS

SHEET NO.	DESCRIPTION
1.	COVER SHEET
2.	SIGNATURE SHEET
3.	INDEX OF SHEETS, LENGTHS, STATION EQUATIONS, & STANDARDS
4.	GENERAL NOTES, STRUCTURE RATINGS, & MIX DESIGN
5.	SUMMARY OF QUANTITIES
6.	SUMMARY OF QUANTITIES
7.	RESURFACING SCHEDULES
8.	LOCATION 1 PAVEMENT MARKING SCHEDULE
9.	LOCATION 2 & 3 PAVEMENT MARKING SCHEDULES
10.	LOCATION 3 GUARDRAIL, ENTRANCE, & SIDE ROAD SCHEDULE
11.	LOCATION 1 MAP & TYPICAL SECTION
12.	LOCATION 1 TYPICAL SECTIONS
13.	LOCATION 2 MAP & TYPICAL SECTIONS
14.	LOCATION 3 MAP & TYPICAL SECTION
15.	TEMPORARY RAMP & SAFETY EDGE DETAILS
16.	LOCATION 3 BUTT JOINT, SIDE ROAD, & ENTRANCE DETAILS
17.	PARAPET DETAIL
18.	UNEVEN LANES SIGN DETAIL
19.	ROUGH GROOVED SURFACE SIGN DETAIL

LENGTH OF PROJECT

LOCATION 1

GROSS LENGTH = 2,566.85 FEET = 0.49 MILES  
 NET LENGTH = 2,566.85 FEET = 0.49 MILES

LOCATION 2

GROSS LENGTH = 3,289 FEET = 0.62 MILES  
 NET LENGTH = 3,289 FEET = 0.62 MILES

LOCATION 3

GROSS LENGTH = 30,850.3 FEET = 5.84 MILES  
 SN 073-0025: STA 272+11.372 TO STA 273+58.62  
 SN 073-0026: STA 281+06.91 TO STA 283+45.09  
 TWO STRUCTURE OMISSIONS = 385.40 FEET = 0.07 MILES  
 NET LENGTH = 30,464.9 FEET = 5.77 MILES

STATION EQUATIONS

LOCATION 1

314+44.5 BK = 314+48.5 AH  
 321+34 BRIDGE = 17+99 FIFTH

LOCATION 2

1239+60 BK = 1240+24 AH

LOCATION 3

454+84.5 BK = 455+00 AH

HIGHWAY STANDARDS

442201-03	701201-04
630001-10	701301-04
630301-05	701306-03
631031-10	701311-03
635006-03	701336-06
701006-03	701501-06
701011-02	780001-03
	781001-03

FILE NAME =	USER NAME = *USER*	DESIGNED -	REVISED -	<b>STATE OF ILLINOIS DEPARTMENT OF TRANSPORTATION</b>	<b>INDEX OF SHEETS, LENGTHS, STATION EQUATIONS, &amp; STANDARDS</b>	*FAP 42/FAU 9668/9669		*PERRY & JACKSON		
c:\pwork\pudot\lavenderba\0302467\7	292-shr-pln.dgn	DRAWN -	REVISED -			F.A. RTE.	SECTION	COUNTY	TOTAL SHEETS	SHEET NO.
	PLOT SCALE = 100.0000' / 1"	CHECKED -	REVISED -				(8,103) RS-2; (12-2) RS-		19	3
	PLOT DATE = 3/22/2012	DATE -	REVISED -			SCALE:	SHEET OF	SHEETS STA.	TO STA.	CONTRACT NO. 78292
								ILLINOIS FED. AID PROJECT		

## GENERAL NOTES

1) THE THICKNESS OF HOT MIX ASPHALT MIXTURE SHOWN ON THE PLANS IS THE NOMINAL THICKNESS. DEVIATIONS FROM THE NOMINAL THICKNESS WILL BE PERMITTED WHEN SUCH DEVIATIONS OCCUR DUE TO IRREGULARITIES IN THE EXISTING SURFACE OR BASE ON WHICH THE HOT MIX ASPHALT MIXTURE IS PLACED.

2) FACTORS USED FOR ESTIMATING PLAN QUANTITIES ARE AS FOLLOWS AND SHALL NOT BE USED FOR THE BASIS OF FINAL QUANTITIES:

ALL HOT MIX ASPHALT	2.392 METRIC TONS/CU. METER ( 2.016 TONS/CU. YD. )
ALL AGGREGATE	2.43 METRIC TONS/CU. METER ( 2.05 TONS/CU. YD. )
<b>BITUMINOUS MATERIALS:</b>	
ON PAVEMENT	0.41 LITERS/SQ. METER ( 0.09 GAL./SQ. YD. )
ON AGGREGATE SURFACE	1.45 LITERS/SQ. METER ( 0.32 GAL./SQ. YD. )
AGGREGATE (PRIME COAT)	0.0016 METRIC TONS/SQ. METER ( 0.0015 TONS/SQ. YD. )

3) THE CONTRACTOR SHALL STAMP STATIONING IN THE PROPOSED HOT MIX ASPHALT SURFACE AT 100 m (300 FT.) INTERVALS ON ALTERNATING SIDES OF THE PAVEMENT AND AS DIRECTED BY THE ENGINEER. THE STATION SYMBOL STAMPS USED SHALL BE FURNISHED BY THE CONTRACTOR. THEY SHALL BE 140 mm (5 IN.) TALL, OF A DESIGN APPROVED BY THE ENGINEER, AND SHALL REMAIN THE PROPERTY OF THE CONTRACTOR.

4) BITUMINOUS RESURFACING SHALL BE PLACED IN A SEQUENCE THAT WILL MINIMIZE THE TIME THE CENTERLINE EDGE IS EXPOSED TO TRAFFIC. WHEN AT THE END OF A DAY'S OPERATION THE EXPOSED CENTERLINE EDGE IS GREATER THAN 600 METERS (2,000 FT.), THE CONTRACTOR SHALL BE REQUIRED TO PAVE IN THE ADJACENT LANE ON THE FOLLOWING WORK DAY. PRIOR TO WINTER SHUTDOWN, RESURFACING ON ADJACENT LANES IS TO BE BROUGHT UP TO THE SAME ELEVATION.

5) THE QUANTITY OF SHORT TERM PAVEMENT MARKING SHOWN IN THE PLANS IS BASED ON ONE APPLICATION EACH FOR THE HMA SURF. COURSE REMOVAL AND SURFACE COURSE.

6) QUANTITIES SHOWN IN THE PLANS FOR PATCHING ARE ESTIMATES. PATCHING SURVEY FOR LOCATION 1 WAS DONE ON JANUARY 20, 2012. PATCHING SURVEY FOR LOCATION 2 & 3 WAS DONE ON JANUARY 24, 2012. THE ACTUAL AMOUNT OF PATCHING WILL BE DETERMINED BY THE ENGINEER IN THE FIELD.

## STRUCTURE INFORMATION

LOCATION 3:

STRUCTURE NUMBER	STATION	INV. RATING	OPR. RATING	SUFF. RATING
073-0025	272+85	25.5	42.5	89.8
073-0026	282+26	26.5	44.2	89.8

SN 073-0025 MTD ALLOWANCE: LOADED MTD ALLOWED  
SN 073-0026 MTD ALLOWANCE: LOADED MTD ALLOWED

## MIXTURE REQUIREMENTS

Location(s):	Hot-Mix Asphalt Surface Course (Location 1 & 2)
Mixture Use(s):	Polymerized Hot-Mix Asphalt Surface Course, Mix D, N105
AC/PG:	SBS PG76-22
RAP % (Max):	0
Design Air Voids:	4.0 %, 105 Gyration Design
Mixture Composition: (Gradation Mixture)	IL-9.5 mm or IL12.5 mm
Friction Aggregate:	D Surface

Location(s):	Hot-Mix Asphalt Surface Course (Location 3)
Mixture Use(s):	Hot-Mix Asphalt Surface Course, Mix D, N90
AC/PG:	PG64-22
RAP % (Max):	10
Design Air Voids:	4.0 %, 90 Gyration Design
Mixture Composition: (Gradation Mixture)	IL-9.5 mm or IL-12.5mm
Friction Aggregate:	D Surface

Location(s):	Hot-Mix Asphalt Parking Lane (Location 2), HMA Shoulders (Location 3), and Incidental HMA Surfacing (Location 3)
Mixture Use(s):	Hot-Mix Asphalt Surface Course, Mix C, N70
AC/PG:	PG64-22
RAP % (Max):	15
Design Air Voids:	4.0 %, 90 Gyration Design
Mixture Composition: (Gradation Mixture)	IL-9.5mm or IL-12.5mm
Friction Aggregate:	C Surface

# SUMMARY OF QUANTITIES

CODE NUMBER	ITEM DESCRIPTION	UNIT	TOTAL QUANTITY	COUNTY		PERRY	
				JACKSON			
				LOCATION	1	2	3
				ROUTE	IL 127 (FAU 9668/9669)	IL 13/127 (FAP 42)	IL 127 (FAP42)
CONSTRUCTION TYPE	0005		0005		0005		
FUNDING	80% FED/ 20% STATE		80% FED / 20% STATE	80% FED / 20% CITY	80% FED / 20% STATE		
				URBAN	URBAN	CITY	RURAL
				QUANTITY	QUANTITY	QUANTITY	QUANTITY
				L20EU, 01	L05EL, 01	L05EL, 02	L05EC, 01
40600982	HOT-MIX ASPHALT SURFACE REMOVAL - BUTT JOINT	SO YD	588				588
40600990	TEMPORARY RAMP	SO YD	195	109	33		53
40603315	HOT-MIX ASPHALT SURFACE COURSE, MIX "C", N70	TON	4119			234	3885
40603345	HOT-MIX ASPHALT SURFACE COURSE, MIX "D", N90	TON	6824				6824
40603550	POLYMERIZED HOT-MIX ASPHALT SURFACE COURSE, MIX "D", N105	TON	1410	583	827		
40800010	BITUMINOUS MATERIALS (PRIME COAT)	GALLON	15165	618	886	251	13410
40800030	AGGREGATE (PRIME COAT)	TON	250	8	15	4	223
40800050	INCIDENTAL HOT-MIX ASPHALT SURFACING	TON	86				86
44000151	HOT-MIX ASPHALT SURFACE REMOVAL, 1/2"	SO YD	80917				80917
44000155	HOT-MIX ASPHALT SURFACE REMOVAL, 1 1/2"	SO YD	19479	6842	9847	2790	
44200152	PAVEMENT PATCHING, TYPE I, 13 INCH	SO YD	25	25			
44200156	PAVEMENT PATCHING, TYPE II, 13 INCH	SO YD	186	186			
44200162	PAVEMENT PATCHING, TYPE IV, 13 INCH	SO YD	159	159			
44200188	PAVEMENT PATCHING, TYPE I, 16 INCH	SO YD	66		66		
44200192	PAVEMENT PATCHING, TYPE II, 16 INCH	SO YD	574		574		
44200196	PAVEMENT PATCHING, TYPE III, 16 INCH	SO YD	133		133		
44200198	PAVEMENT PATCHING, TYPE IV, 16 INCH	SO YD	92		92		
48102100	AGGREGATE WEDGE SHOULDER, TYPE B	TON	490	107			383
50300255	CONCRETE SUPERSTRUCTURE	CU YD	1.36				1.36
50800205	REINFORCEMENT BARS, EPOXY COATED	POUND	325				325

FILE NAME =	USER NAME = #USER#	DESIGNED -	REVISED -
es:\pwwork\pripdot\lavenderba\0302467\2292-shit-plan.dgn		DRAWN -	REVISED -
		CHECKED -	REVISED -
		DATE -	REVISED -

**STATE OF ILLINOIS  
DEPARTMENT OF TRANSPORTATION**

<b>SUMMARY OF QUANTITIES</b>			
SCALE:	SHEET	OF	SHEETS
		STA.	TO STA.

*FAP 42/FAU 9668/9669		*PERRY & JACKSON	
F.A. RTE.	SECTION	COUNTY	TOTAL SHEETS
*	(8,103) RS-2; (12-2) RS-	*	19
			SHEET NO. 5
			CONTRACT NO. 78292
ILLINOIS FED. AID PROJECT			



## LOCATION 1 RESURFACING SCHEDULE

LOCATION STATION TO STATION				LENGTH	HMA SURF. REMOV. (1 1/2")	TEMP RAMP	HMA SUR. CSE., MIX D, N 105 (1 1/2")	BIT. MAT. (PRIME COAT)	AGG. SHOULDER WEDGE TY. B
				( FT )	( SQ YD )	( SQ YD )	( TON )	( GAL )	( TON )
FAU 9668/9669 ( IL 127/Bridge St. ) - STA. 313+56 TO STA. 322+34									
	313+56.00	TO	314+45.00	89.0	217	12	19	20	7
Eq. Sta. 314+44.85(bk) = 314+48.85(ah)									
	314+49.00	TO	322+34.00	785.0	1920	24	164	173	47
FAU 9668/9669 ( IL 127/Fifth St. ) - STA. 17+87 to STA. 1+06									
	17+87.00	TO	1+06.00	1681.0	4705	73	400	425	53
LOCATION 1 TOTALS:					6842	109	583	618	107

## LOCATION 2 & 3 RESURFACING SCHEDULE

LOCATION STATION TO STATION	LENGTH	HMA SURFACE REMOVAL, 1 1/2"	HMA SURFACE REMOVAL, 1/2"	HMA SURFACE REMOVAL-BUTT JOINT	POLYMERIZED HOT-MIX ASPHALT SURFACE COURSE, MIX D, N105	HOT-MIX ASPHALT SURFACE COURSE, MIX D, N90	BIT. MAT. (PRIME COAT)	AGG. SHOULDER WEDGE, TY. B	SHOULDER, HOT-MIX ASPHALT SURFACE COURSE, MIX C, N70*	
	FEET	SQ YD	SQ YD	SQ YD	TON	TON	GALLON	TON	TON	
FAP 42 ( IL 13/127 )										
LOCATION 2, STA 1229+00 TO STA 1262+53										
	1229+00	TO	1236+77.9	777.9	2593		233			
	1236+77.9	TO	1239+60	282.1	1128		102		26	
EQ. STA 1239+60 BK = STA 1240+24 AH										
	1240+24	TO	1262+53	2229	8916		802		208	
LOCATION 2 TOTALS:			12637			827	1137		234	
LOCATION 3, STA 190+00 TO STA 498+65.8										
	190+00	TO	272+11.372	8211.372	21790	196	1839	3595	103	1022
OMISSION SN 073-0025										
	273+58.62	TO	281+06.09	747.47	1886	196	167	311	9	93
OMISSION SN 073-0026										
	283+45.09	TO	454+84.5	17139.41	45652	98	3839	7485	210	2103
EQ. STA 454+84.5 BK = STA 455+00 AH										
	455+00	TO	498+65.8	4365.8	11589	98	978	1912	54	543
LOCATION 3 TOTALS:				80917	588		6824	13304	376	3761
LOCATION 2 & 3 TOTALS:			12637	80917	588	827	6824	14441	376	3996

\*FOR ADDITIONAL SHOULDER QUANTITY, SEE GUARDRAIL SCHEDULE

FILE NAME =	USER NAME = \$USER*	DESIGNED -	REVISED -	<b>STATE OF ILLINOIS DEPARTMENT OF TRANSPORTATION</b>	<b>RESURFACING SCHEDULES</b>	SCALE:	SHEET	OF	SHEETS	STA.	TO	STA.	*FAP 42/FAU 9668/9669 *PERRY & JACKSON		
et:\pw\work\p\dot\lavenderba\d0302467\78292-sht-plen.dgn		DRAWN -	REVISED -			F.A. RTE.	SECTION	COUNTY	TOTAL SHEETS	SHEET NO.					
		CHECKED -	REVISED -			(8,103) RS-2; (12-2) RS-1			19	7					
		DATE -	REVISED -												CONTRACT NO. 78292

# LOCATION 1 PAVEMENT MARKING SCHEDULE

LOCATION STATION TO STATION				THERMOPLASTIC PAVEMENT MARKING			THERMOPLASTIC PAVEMENT MARKING	TEMPORARY		SHORT-TERM	NOTES
				4 INCH WHITE (EDGE LINE)	4 INCH YELLOW (NO PASS ZONE OR DBL. YELLOW)	4 INCH (SKIP-DASH)	24 INCH (STOP BARS)	4 INCH	24 INCH	4 INCH	
				FOOT	FOOT	FOOT	SQ FT	FOOT	FOOT	FOOT	
MAINLINE: Sta. 313+56 TO Sta. 322+34.19 (Bridge St.)											
	313+56.0	TO	314+44.5	177				177	9		
LT	313+56.0	TO	314+44.5		89			89			
RT	313+56.0	TO	314+44.5		89			89			
EQ. STA. 314+44.5 (BK.) = 314+48.5 (AH.)											
	314+48.5	TO	320+88.5	1,280				1280	64		
LT	314+48.5	TO	320+88.5		640			640			
RT	314+48.5	TO	316+96.2		248			248			
RT	316+96.2	TO	322+34.2			140		140			
MAINLINE: Sta. 17+99.21 TO Sta. 00+02.08 (Fifth St.)											
	17+99.2	TO	+88.2	3,422				3422	171		
	17+87.0	TO	17+85.0			16		16		Stop Bar for Through	
	17+80.0	TO	17+75			22		22		Stop Bar for RT. Turn	
	17+99.2	TO	15+38.2		522			522		Median striping	
LT	15+38.2	TO	12+73.2			70		70			
RT	15+38.2	TO	12+73.2		265			265			
	12+73.2	TO	6+97.2			140		140			
RT	6+97.2	TO	4+26.2		271			271			
LT	4+26.2	TO	+88.2		338			338			
RT	4+26.2	TO	+88.2		338			338			
RT	1+95.2	TO	+88.2			30		30		Turn lane skip dash	
RT	+54.0	TO	+52.0			26		26		Stop Bar	
SUB-TOTALS MAINLINE				4,879	2799	380	64	8,058	64	244	



# LOCATION 2 & 3 PAVEMENT MARKING SCHEDULE

LOCATION STATION TO STATION	THERMOPLASTIC PAVEMENT MARKING						SHORT TERM PAVEMENT MARKING				NOTES
	4" WHITE EDGELINE		4" SOLID YELLOW LINE		4" YELLOW SKIP DASH	4" SKIP DASH	4" DIAGONAL EDGELINE		4" DIAGONAL EDGELINE		
	LEFT	RIGHT	LEFT	RIGHT			LEFT	RIGHT			
	FEET	FEET	FEET	FEET	FEET	FEET	FEET	FEET	FEET		
FAP 42 ( IL 13/127)											
LOCATION 2, STA 1229+00 TO STA 1262+53											
1229+00	TO	1234+80.8			581	581					NPZ
1234+80.8	TO	1237+44.8	214		264	264					NPZ
1237+44.8	TO	1239+60	165		215		54	22			NPZ
EQ. STA 1239+60 BK = STA 1240+24 AH											
1240+24	TO	1240+61.6	38		38		9	4			NPZ
1240+61.6	TO	1262+53	1941				548	219			
LOCATION 2 TOTALS:			2358		1097	845	611	244			
LOCATION 3, STA 190+00 TO STA 498+65.8											
190+00	TO	191+58.4	158	158			40	16	6	6	
191+58.4	TO	197+92	634	634	634		158	63	25	25	NPZ
197+92	TO	228+12.16	3020	3020			755	302	121	121	
228+12.16	TO	239+57.92	1146	1146		1146	286	115	46	46	NPZ
239+57.92	TO	254+94.4	1462	1536	1537	1537	384	154	58	61	NPZ
254+94.4	TO	262+33.6	739	739	739		185	74	30	30	NPZ
262+33.6	TO	272+11.372	978	978			244	98	39	39	
OMISSION SN 073-0025											
273+58.62	TO	281+06.09	748	748			187	75	30	30	
OMISSION SN 073-0026											
283+45.09	TO	344+65.12	6060	6077			1530	612	242	243	
344+65.12	TO	349+93.12	523	523		523	131	52	21	21	NPZ
349+93.12	TO	353+09.90	317	278			79	32	13	11	
353+09.90	TO	360+43.84	734	734	734		183	73	29	29	NPZ
360+43.84	TO	365+77.12	533	533			133	53	21	21	
365+77.12	TO	377+38.72	1162	1162		1162	290	116	46	46	NPZ
377+38.72	TO	380+55.52	317	256	317	317	79	32	13	10	NPZ
380+55.52	TO	390+05.92	950	950	950		238	95	38	38	NPZ
390+05.92	TO	454+84.5	6356	6324			1620	648	254	253	
EQ. STA 454+84.5 BK = STA 455+00 AH											
455+00	TO	498+65.8	4340	4313			1091	437	174	173	TEMPORARY PAVEMENT MARKERS, 4"
LOCATION 3 TOTALS:			21291	21149	2001	2001	5375	2150	852	846	
LOCATION 2 & 3 TOTALS:			23649	21149	3099	2846	5986	2394	852	846	
TOTAL FOR EACH TYPE			56729				4092				56729

- TEMPORARY PAVEMENT MARKING - LINE 4" QUANTITY IS EQUAL TO THERMOPLASTIC PAVEMENT MARKING - LINE 4" FOR ALL STATIONS
- WORK ZONE PAVEMENT MARKING REMOVAL INCLUDES TEMPORARY AND SHORT TERM PAVEMENT MARKINGS
- FOR LOCATION 1, EDGELINE SIGNIFIES LINE THAT SEPERATES DRIVING LANE FROM PARKING LANE.
- FOR LOCATION 1, THERE IS NO EDGELINE ON RIGHT SIDE.

### LOCATION 3 GUARDRAIL SCHEDULE

LOCATION STATION TO STATION			GUARDRAIL REMOVAL		STEEL PLATE BEAM GUARDRAIL, TYPE A, 6 FOOT POSTS		TRAFFIC BARRIER TERMINAL, TYPE 6*		TRAFFIC BARRIER TERMINAL, TYPE 1 (SPECIAL) TANGENT		SHLDR WIDENING FOR TYPE 1B, HMA SURF. CRS., MIX C, N70	
			FOOT		FOOT		EACH		EACH		TON	
STA	TO	STAT	LEFT	RIGHT	LEFT	RIGHT	LEFT	RIGHT	LEFT	RIGHT	LEFT	RIGHT
270+20.072	TO	272+11.372	100	100	37.5	62.5	1	1	1	1	14	17
SN 073-0025												
273+58.62	TO	275+48.92	100	100	62.5	37.5	1	1	1	1	17	14
275+48.92	TO	279+16.61										
279+16.61	TO	281+06.91	100	100	37.5	62.5	1	1	1	1	14	17
SN 073-0026												
283+45.09	TO	285+35.39	100	100	62.5	37.5	1	1	1	1	17	14
TOTAL EACH SIDE			800		400		8		8		124	

\*FOR TYPE 6 TERMINAL ATTACHMENT TO EXISTING PARAPET WALL, SEE PARAPET DETAIL.

### LOCATION 3 ENTRANCE SCHEDULE

NUMBER	ENTRANCE TYPE	EXISTING SURFACE	EDGE OF PAVEMENT WIDTH	WIDTH AT 4' OFFSET	ROADWAY AREA	INCIDENTAL HMA SURFACING	BIT. MATERIAL (PRIME COAT)	AGG. WEDGE SHLDRS., TYPE B
		TYPE	FEET	FEET	SQ YD	TON	GALLON	TON
48	PRIVATE	AGGREGATE	16.0	12.0	299			5
2	PRIVATE	OIL & CHIP	16.0	12.0	12	5	4	
4	PRIVATE	BITUMINOUS	16.0	12.0	25	11	2	
8	COMMERCIAL	AGGREGATE	39.0	35.0	132			2
1	COMMERCIAL	OIL & CHIP	39.0	35.0	16	7	5	
1	COMMERCIAL	BITUMINOUS	39.0	35.0	16	7	2	
1	COMMERCIAL	CONCRETE	39.0	35.0	16	7	2	
TOTALS						37	15	7

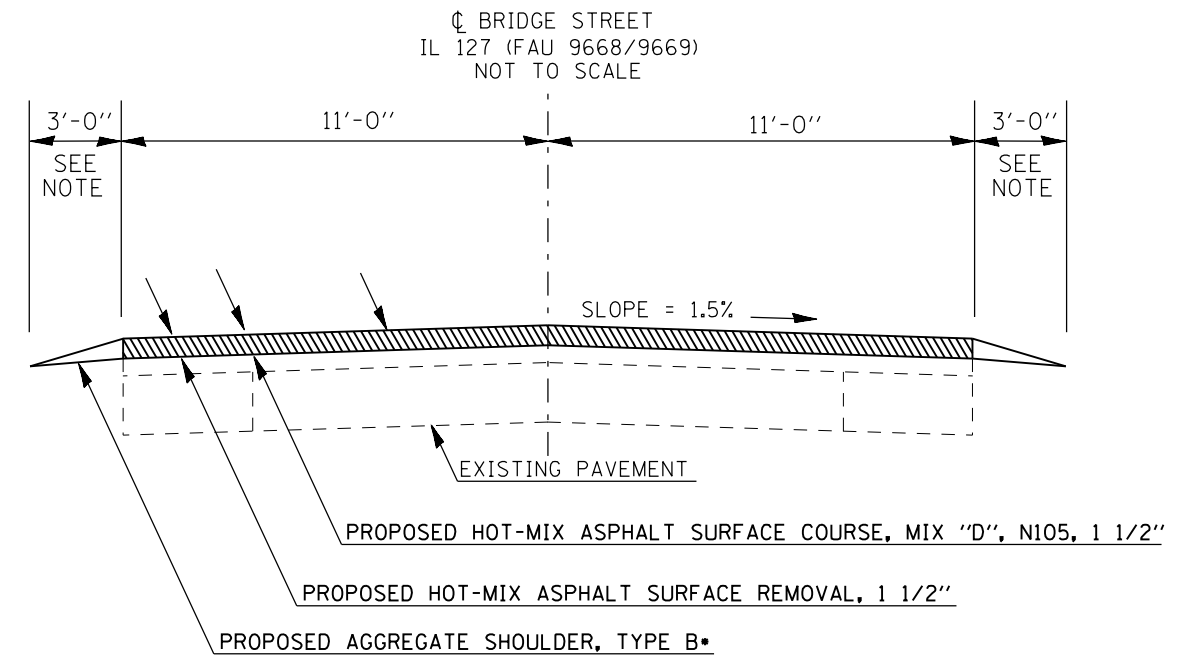
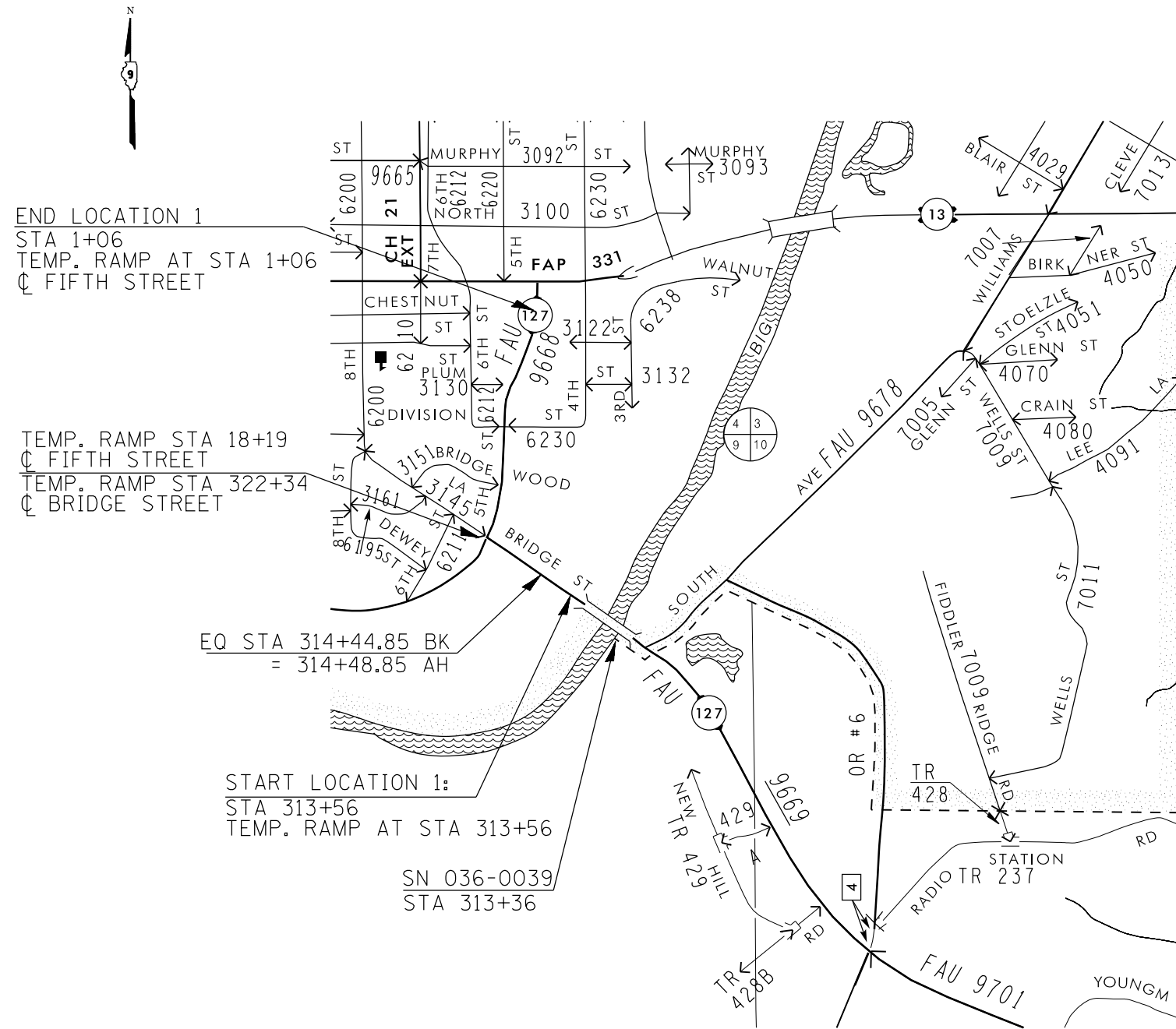
### LOCATION 3 SIDE ROAD SCHEDULE

LOCATION & DESCRIPTION			EXISTING SURFACE	EDGE OF SHOULDER WIDTH	EDGE OF PAVEMENT WIDTH	WIDTH AT 4' OFFSET	WIDTH AT 15' OFFSET	ROADWAY AREA	HMA SURF. REM. - BUTT JOINT	INCIDENTAL HMA SURFACING	BIT. MATERIALS (PRIME COAT)
SIDE	STATION	NAME	TYPE	FEET	FEET	FEET	FEET	SQ YD	SQ YD	TON	GALLON
LEFT	241+22.57	BETHEL CHURCH ROAD	OIL & CHIP	74.0		45.0		26		1	8
RIGHT	286+62.4	FINCH ROAD	OIL & CHIP	43.0		37.0		18		1	6
LEFT	323+90.08	CARNATION ROAD	OIL & CHIP	60.0		42.0		23		1	7
RIGHT	352+14.88	PURPLE MARTIN ROAD	OIL & CHIP	39.0		35.0		16		1	5
RIGHT	379+49.92	DIST 212 ROAD	OIL & CHIP	61.0		32.0		21		1	7
RIGHT	419+62.72	BAPTIST CAMP ROAD	OIL & CHIP	40.0		32.0		16		1	5
RIGHT	448+13.92	TODD'S MILL ROAD	BITUMINOUS		115.0		60.0	243	243	20	22
LEFT	448+13.92	SWANWICK-RICE ROAD	BITUMINOUS		123.0		64.0	260	260	22	24
LEFT	456+32.66	MIDWAY COURT	CONCRETE	26.0		25.0		11		0	1
RIGHT	484+94.42	KILDEER ROAD	OIL & CHIP	53.0		32.0		19		1	6
TOTAL									503	49	91

\*1 INCH CAP OVER SHOULDERS SHOULD BE PAVED THROUGH ALL SIDE ROADS EXCEPT TODD'S MILL AND SWANWICK-RICE ROADS.

\*FOR EACH SIDE ROAD, EXCLUDING TODD'S MILL AND SWANWICK-RICE ROADS, BITUMINOUS WEDGES SHOULD EXTEND 4' FROM EDGE OF SHOULDER.

# LOCATION 1 MAP AND TYPICAL SECTION IL 127 (FAU 9668/9669) AT MURPHYSBORO

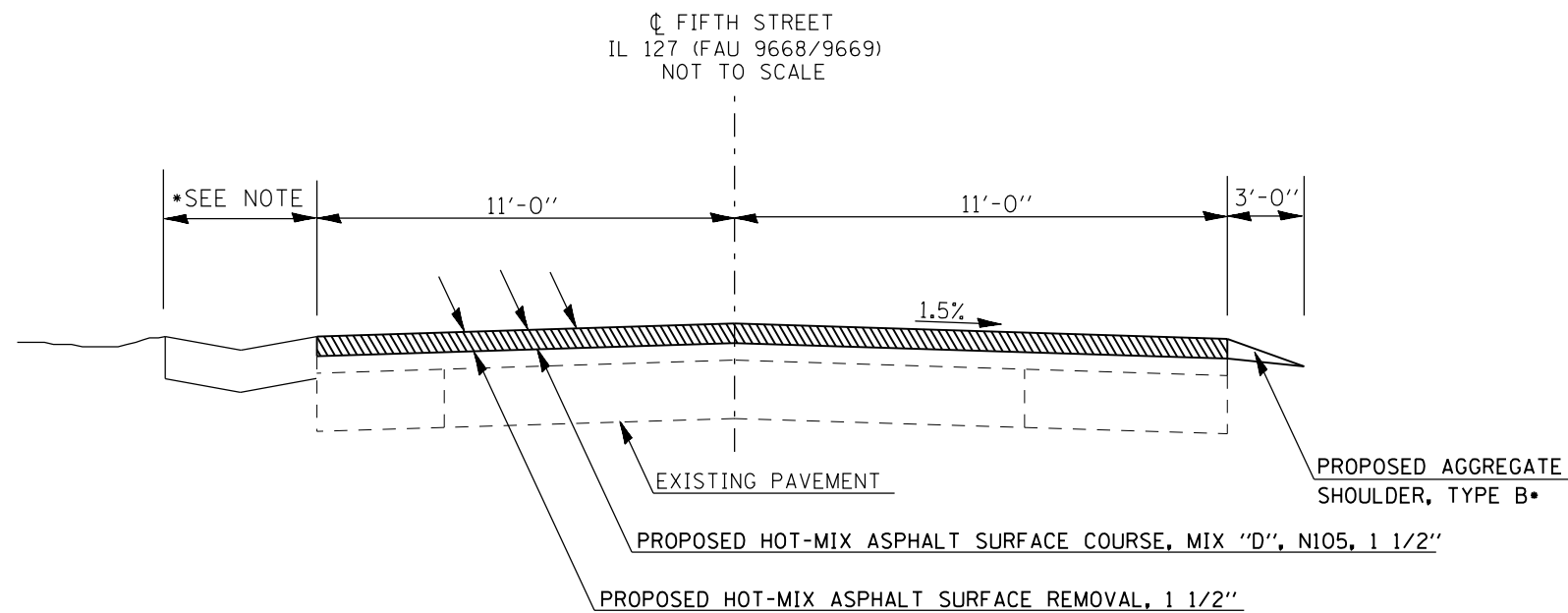


TO BE USED:  
 STA. 313+56 TO STA. 320+35  
 STA. 320+35 TO STA. 322+02  
 STA. 322+02 TO STA. 322+34

NOTE: STA. 320+35 TO STA. 322+02  
 INTERSECTION LIMITS OF FIFTH STREET.

FILE NAME =	USER NAME = *USER*	DESIGNED -	REVISED -	<b>STATE OF ILLINOIS DEPARTMENT OF TRANSPORTATION</b>	<b>LOCATION 1 MAP &amp; TYPICAL SECTION</b>	SCALE:		SHEET	OF	SHEETS	STA.	TO	STA.	
ci:\pw\work\p1dot\lavenderba\d0302467\8292-sht-plan.dgn		DRAWN -	REVISED -					F.A. RTE.	SECTION	COUNTY	TOTAL SHEETS	SHEET NO.		
		CHECKED -	REVISED -					(8,103) RS-2; (12-2) RS-1			19	11		
		DATE -	REVISED -					CONTRACT NO. 78292		ILLINOIS FED. AID PROJECT				

# LOCATION 1 TYPICAL SECTION IL 127 (FAU 9668/9669) AT MURPHYSBORO

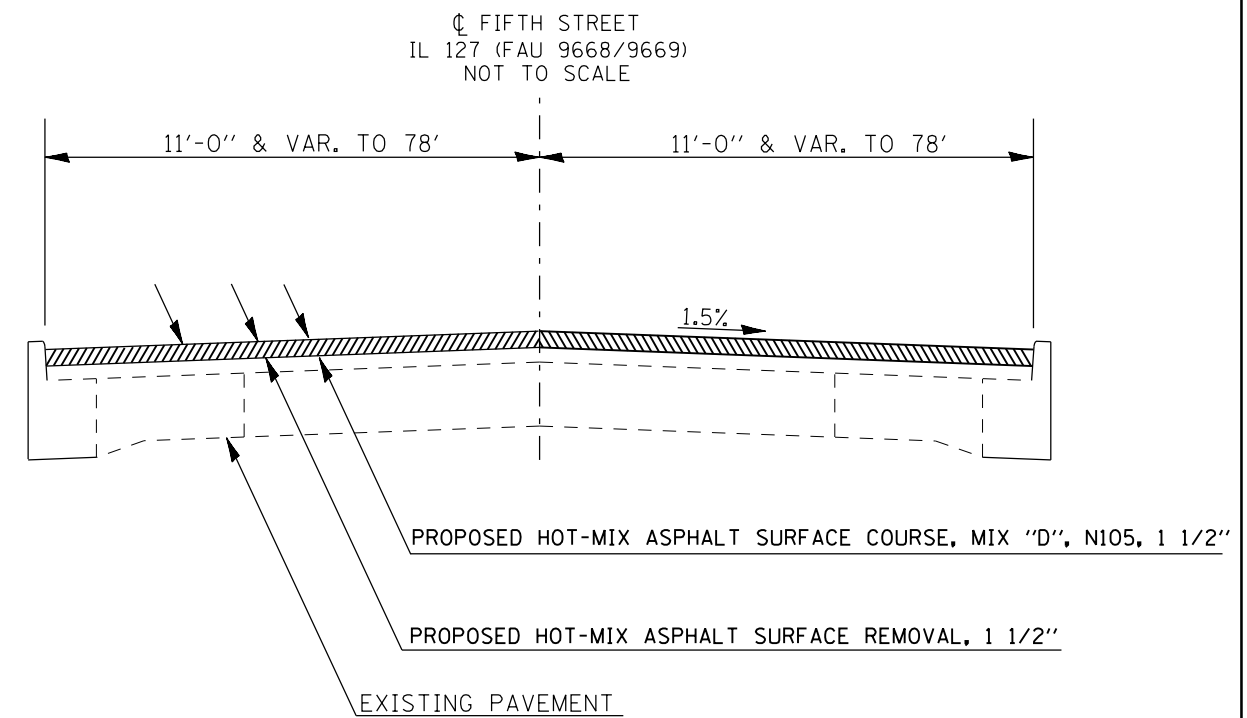


TO BE USED:

GUTTER LOCATION

RT. STA 1+06 TO STA 4+96  
 LT. STA 7+65 TO STA 10+00  
 RT. STA 11+64 TO STA 13+99  
 STA 13+99 TO STA 17+00  
 RT. STA 17+00 TO STA 17+54

\*NOTE: 3' AGG SHOULDERS BOTH SIDES  
 STA 13+99 TO 17+00



TO BE USED:

STA. 4+96 TO STA. 7+65  
 STA. 10+00 TO STA. 11+64  
 STA. 17+54 TO STA. 17+87

NOTE: STA 17+54 TO 17+87 WIDTH VARIES AT  
 BRIDGE STREET FROM 22' TO 156'

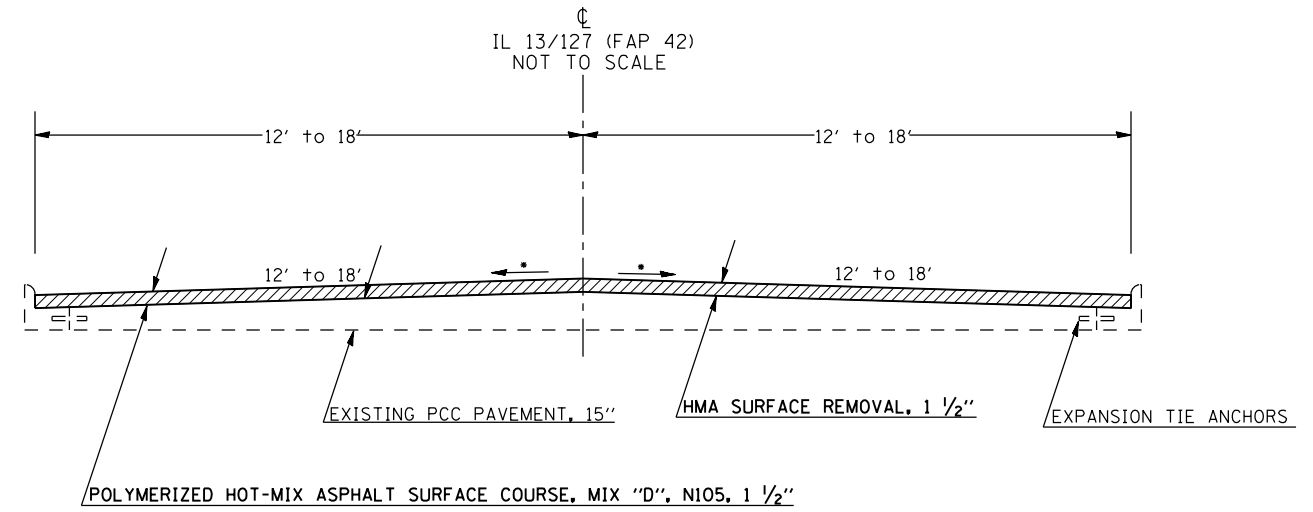
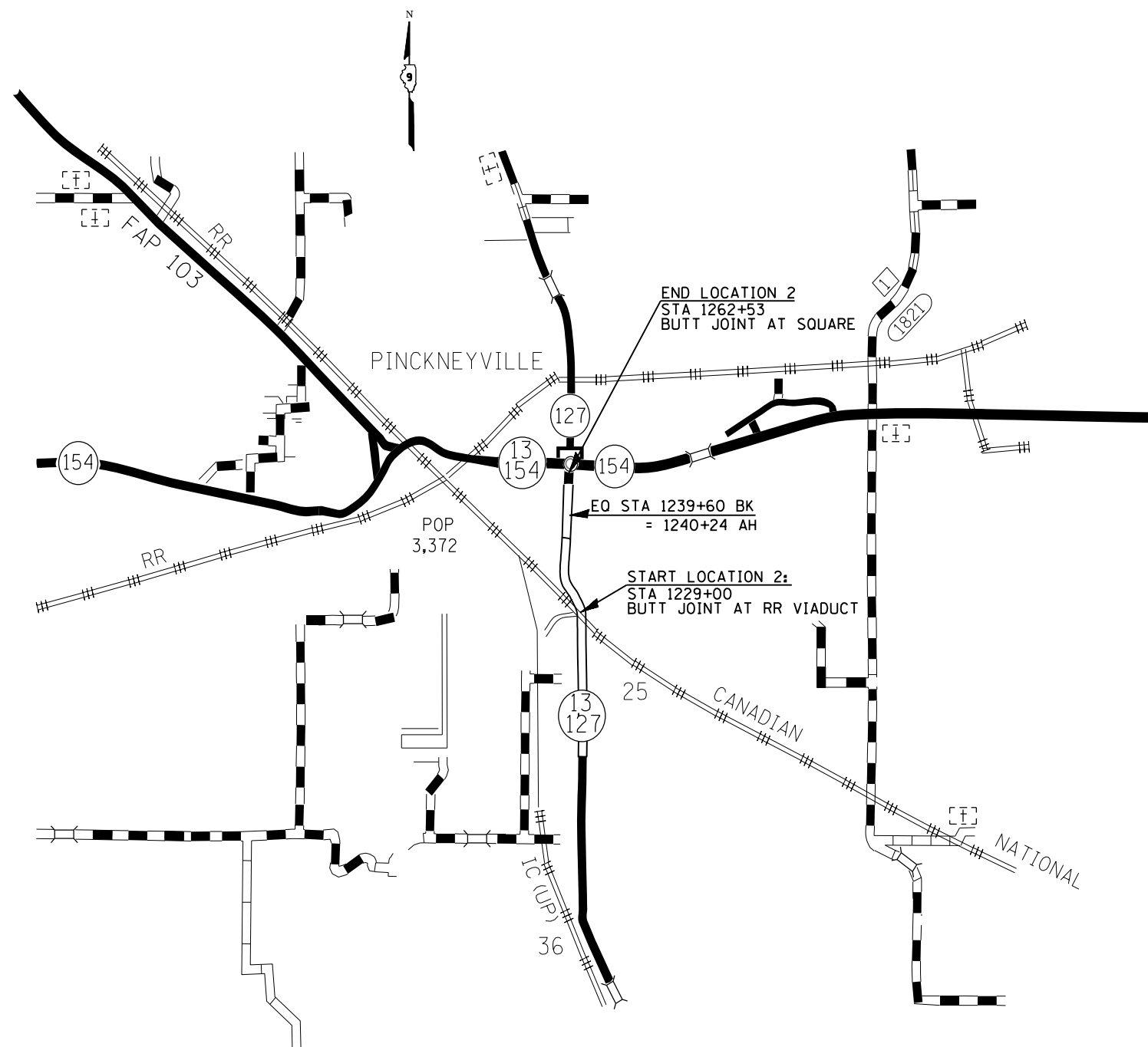
FILE NAME =	USER NAME = \$USER\$	DESIGNED -	REVISED -
ct:\pw\work\p1dot\lavenderba\d0302467\78292-sht-pln.dgn		DRAWN -	REVISED -
	PLOT SCALE = 100.0000' / in.	CHECKED -	REVISED -
	PLOT DATE = 3/22/2012	DATE -	REVISED -

**STATE OF ILLINOIS  
 DEPARTMENT OF TRANSPORTATION**

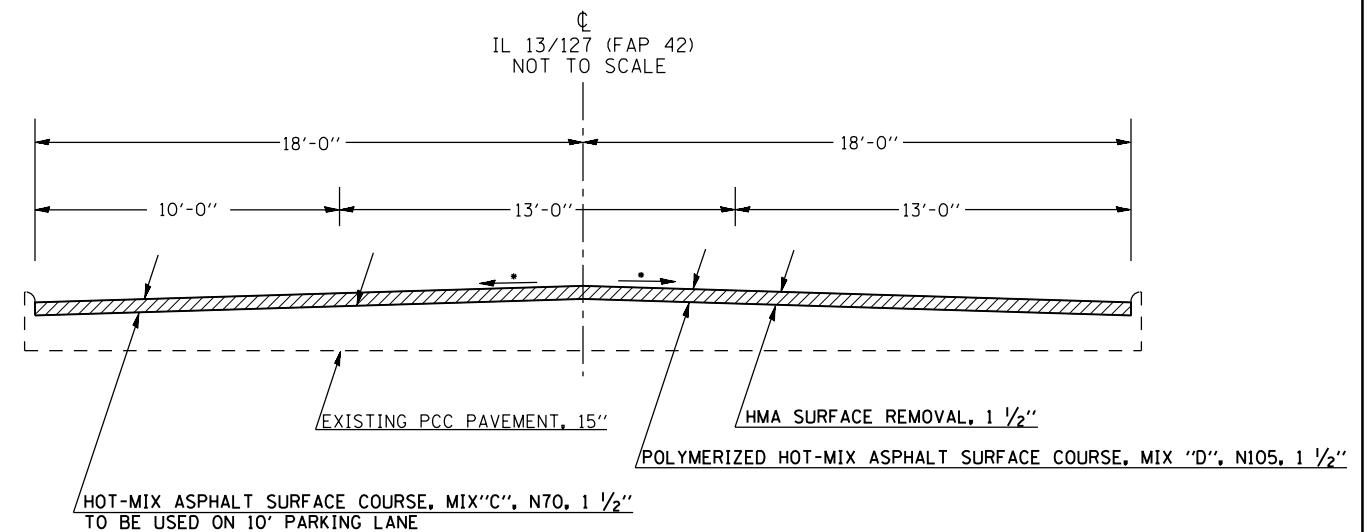
<b>LOCATION 1 TYPICAL SECTIONS</b>			
SCALE:	SHEET	OF SHEETS	STA. TO STA.

*FAP 42/FAU 9668/9669		*PERRY & JACKSON	
F.A. RTE.	SECTION	COUNTY	TOTAL SHEETS
	(8,103) RS-2; (12-2) RS-1		19
			SHEET NO. 12
CONTRACT NO. 78292			
ILLINOIS FED. AID PROJECT			

# LOCATION 2 MAP AND TYPICAL SECTIONS IL 13/127 (FAP 42) AT PINCKNEYVILLE STA 1229+00 TO STA 1262+53



TO BE USED:  
• MATCH EXISTING SLOPE STA 1229+00 TO STA 1236+77.9



TO BE USED:  
• MATCH EXISTING SLOPE STA 1236+77.9 TO STA 1262+53

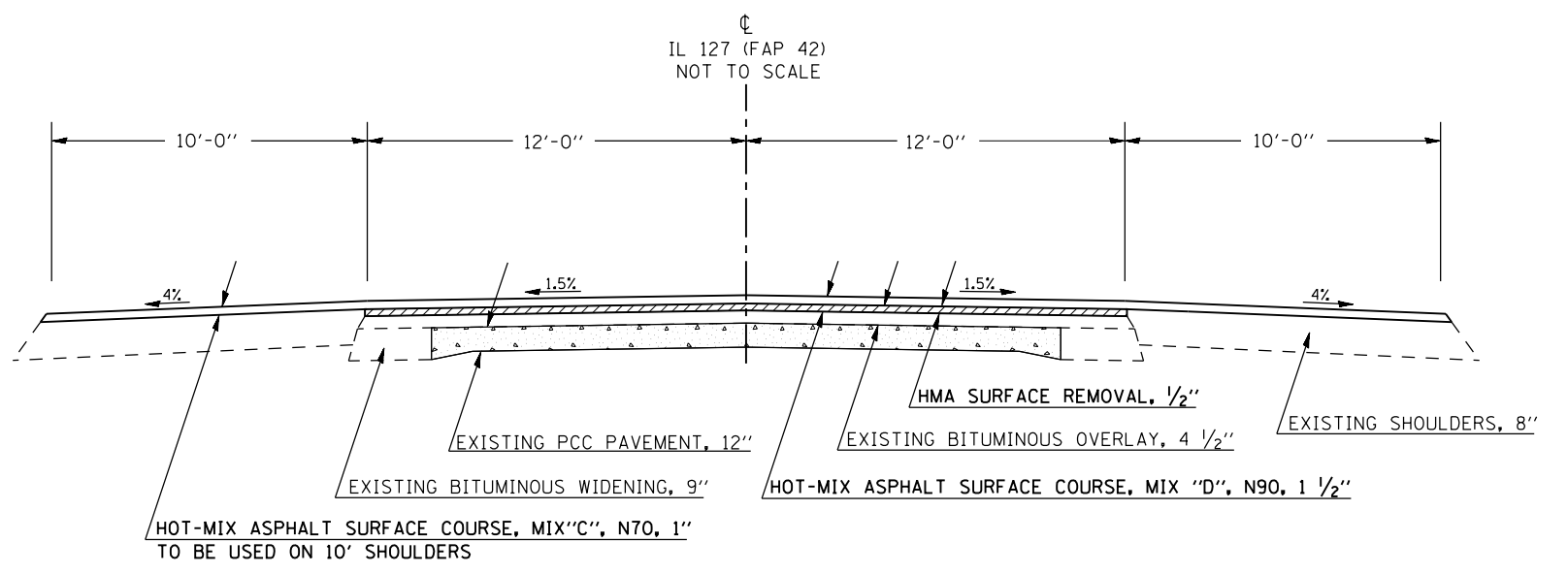
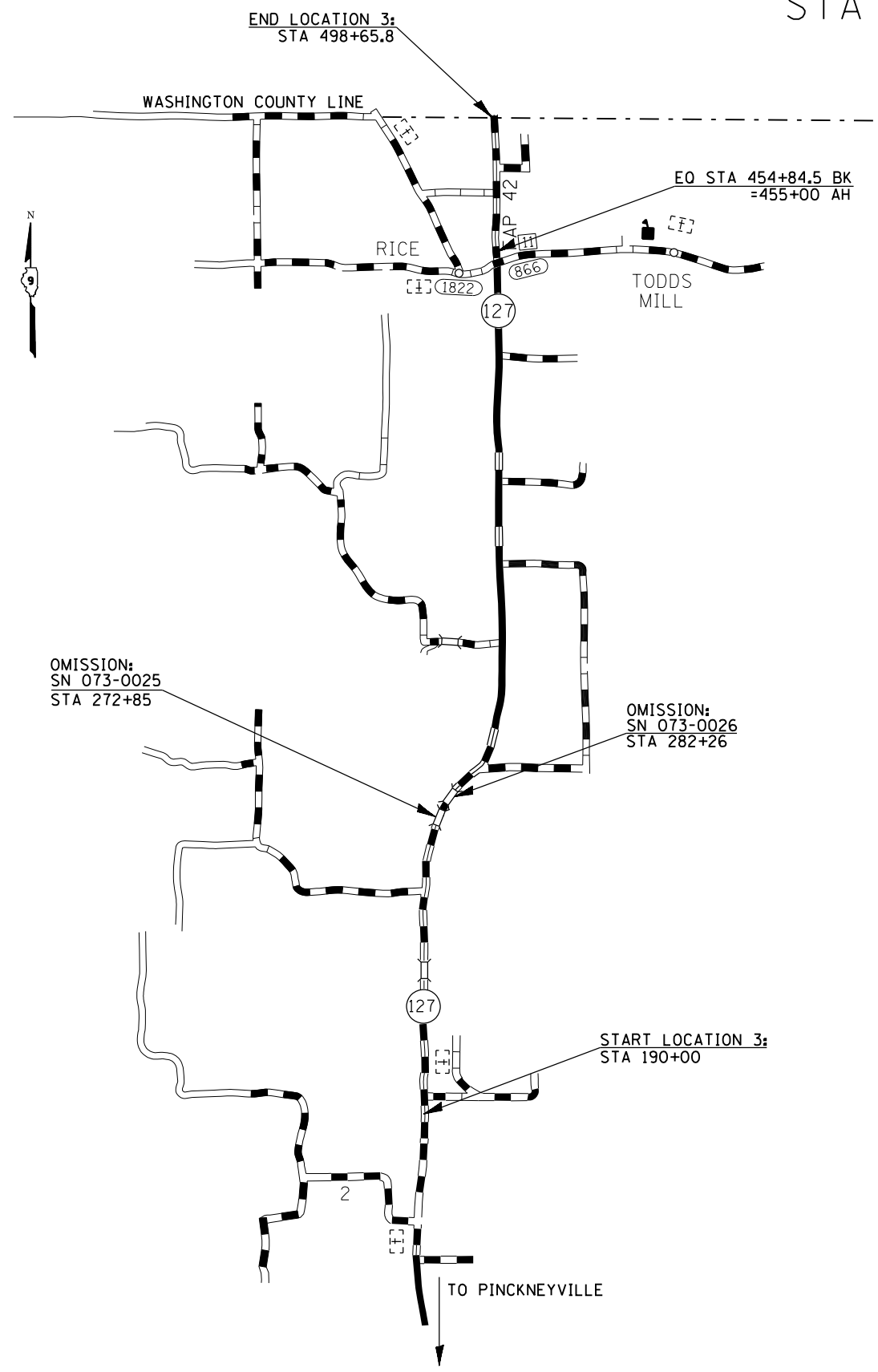
FILE NAME =	USER NAME = \$USER\$	DESIGNED -	REVISED -
et:\pwork\pwork\lavenderba\d0302467\78292-sht-plen.dgn		DRAWN -	REVISED -
	PLOT SCALE = 100.0000' / in.	CHECKED -	REVISED -
	PLOT DATE = 3/22/2012	DATE -	REVISED -

**STATE OF ILLINOIS  
DEPARTMENT OF TRANSPORTATION**

<b>LOCATION 2 MAP &amp; TYPICAL SECTIONS</b>				
SCALE:	SHEET	OF	SHEETS	STA. TO STA.

•FAP 42/FAU 9668/9669		•PERRY & JACKSON	
F.A. RTE.	SECTION	COUNTY	TOTAL SHEETS
	(8,103) RS-2; (12-2) RS-1		19
			SHEET NO. 13
CONTRACT NO. 78292			
ILLINOIS FED. AID PROJECT			

# LOCATION 3 MAP & TYPICAL SECTION IL 127 (FAP 42) NORTH OF PINCKNEYVILLE STA 190+00 TO STA 498+65.8



TO BE USED:  
 STA 190+00 TO STA 272+11.372  
 STA 273+58.62 TO STA 281+06.91  
 STA 283+45.09 TO STA 498+65.8

FILE NAME =	USER NAME = \$USER\$	DESIGNED -	REVISED -
et:\pwork\pwork\lavenderba\d0302467\78292-sht-plan.dgn		DRAWN -	REVISED -
	PLOT SCALE = 100.0000' / in.	CHECKED -	REVISED -
	PLOT DATE = 3/22/2012	DATE -	REVISED -

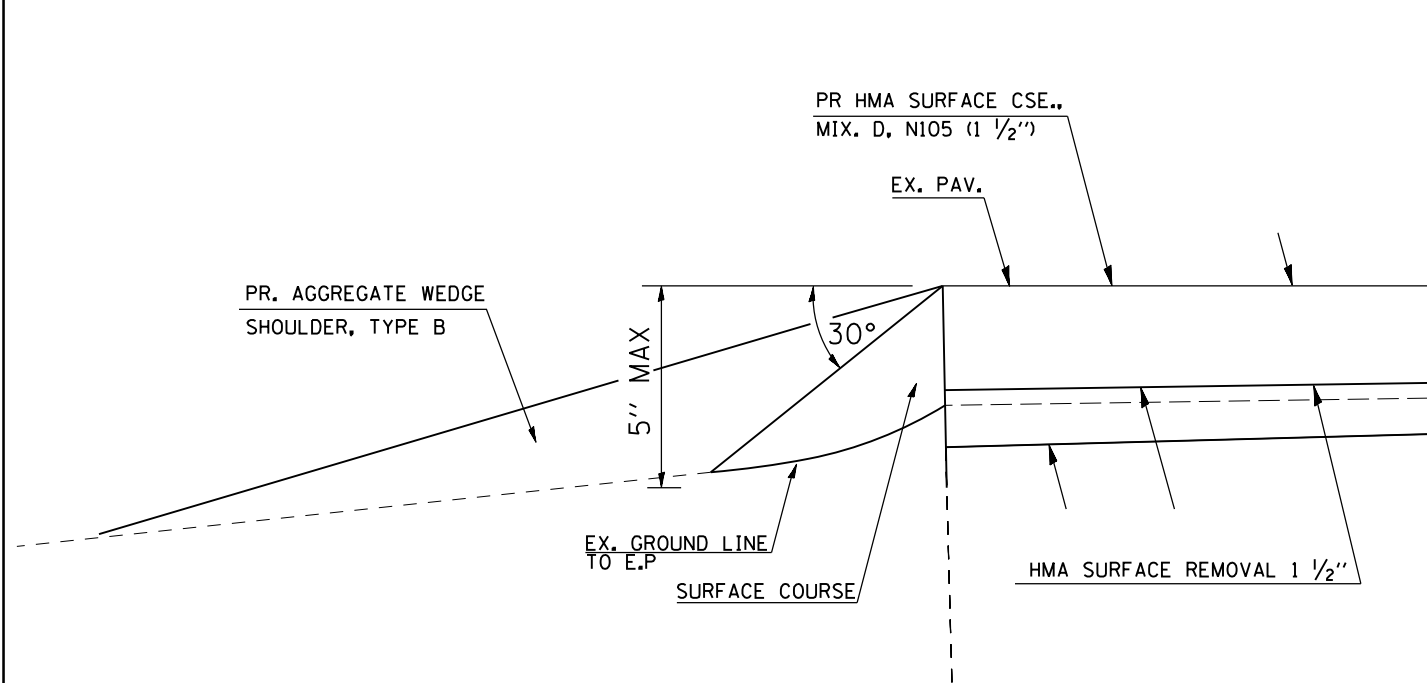
**STATE OF ILLINOIS  
DEPARTMENT OF TRANSPORTATION**

<b>LOCATION 3 MAP &amp; TYPICAL SECTION</b>			
SCALE:	SHEET	OF SHEETS	STA. TO STA.

*FAP 42/FAU 9668/9669		*PERRY & JACKSON	
F.A. RTE.	SECTION	COUNTY	TOTAL SHEETS
	(8,103) RS-2; (12-2) RS-1		19
			SHEET NO. 14
CONTRACT NO. 78292			
ILLINOIS FED. AID PROJECT			

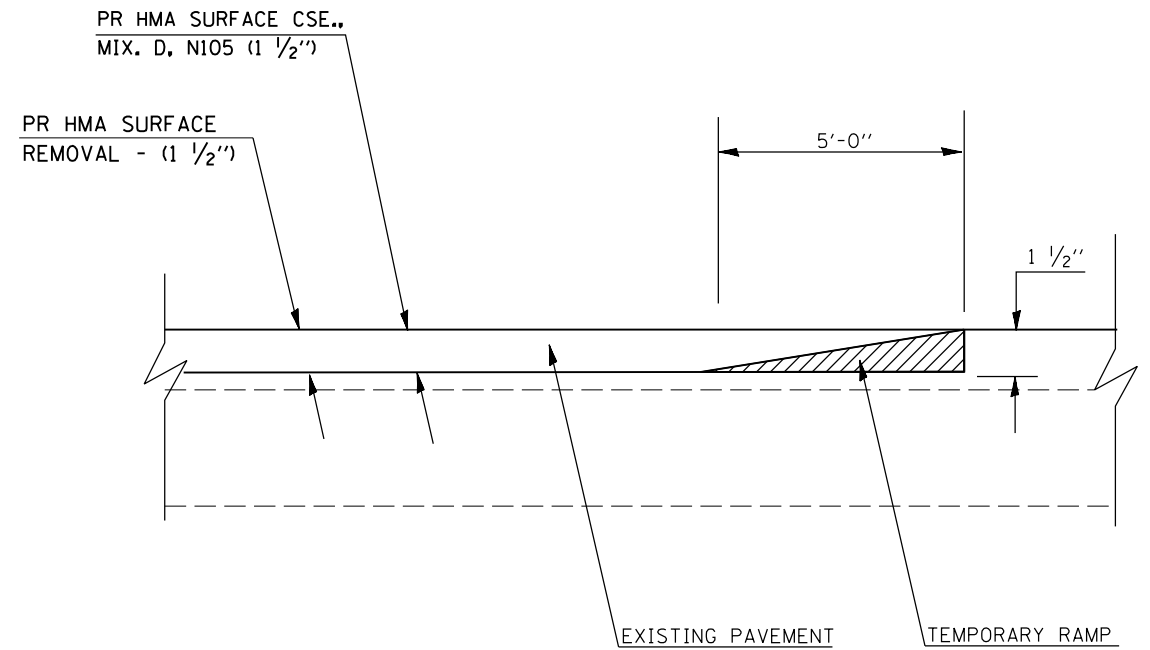
# TEMPORARY RAMP & SAFETY EDGE DETAILS

## NOT TO SCALE



TO BE USED:

- LOCATION 1  
THROUGHOUT PROJECT EXCEPT WHERE  
GUTTER OR HMA SHOULDER IS PRESENT
- LOCATION 3  
THROUGHOUT PROJECT EXCEPT WHERE  
SIDE ROADS OR ENTRANCES ARE PRESENT



TO BE USED:

- LOCATION 1  
STA 313+56 TO STA 313+76  
STA 1+06 TO STA 1+26  
STA 17+99 TO STA 18+19  
STA 322+34 TO STA 322+14
- LOCATION 2  
STA 1229+00 TO STA 1229+05  
STA 1262+48 TO STA 1262+53
- LOCATION 3  
STA 190+00 TO STA 190+05  
STA 272+06.372 TO STA 272+11.372  
STA 273+58.6 TO STA 273+63.6  
STA 281+01.9 TO STA 281+06.9  
STA 283+45.09 TO STA 283+50.09  
STA 498+60.38 TO STA 498+65.8

FILE NAME =	USER NAME = \$USER\$	DESIGNED -	REVISED -
et:\pwork\pwork\lavenderba\d0302467\78292-sht-plen.dgn		DRAWN -	REVISED -
	PLOT SCALE = 100.0000' / in.	CHECKED -	REVISED -
	PLOT DATE = 3/22/2012	DATE -	REVISED -

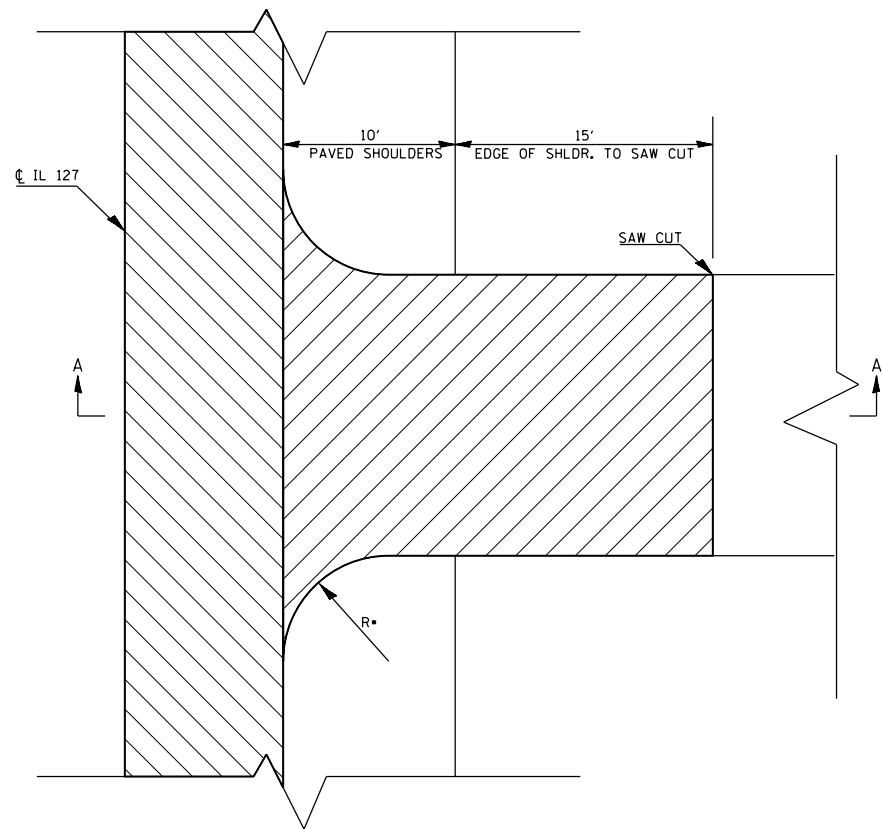
**STATE OF ILLINOIS  
DEPARTMENT OF TRANSPORTATION**

<b>TEMPORARY RAMP &amp; SAFETY EDGE DETAIL</b>	
SCALE:	SHEET OF SHEETS STA. TO STA.

•FAP 42/FAU 9668/9669		•PERRY & JACKSON	
F.A. RTE.	SECTION	COUNTY	TOTAL SHEETS
	(8,103) RS-2; (12-2) RS-1		19
			SHEET NO. 15
CONTRACT NO. 78292			
ILLINOIS FED. AID PROJECT			

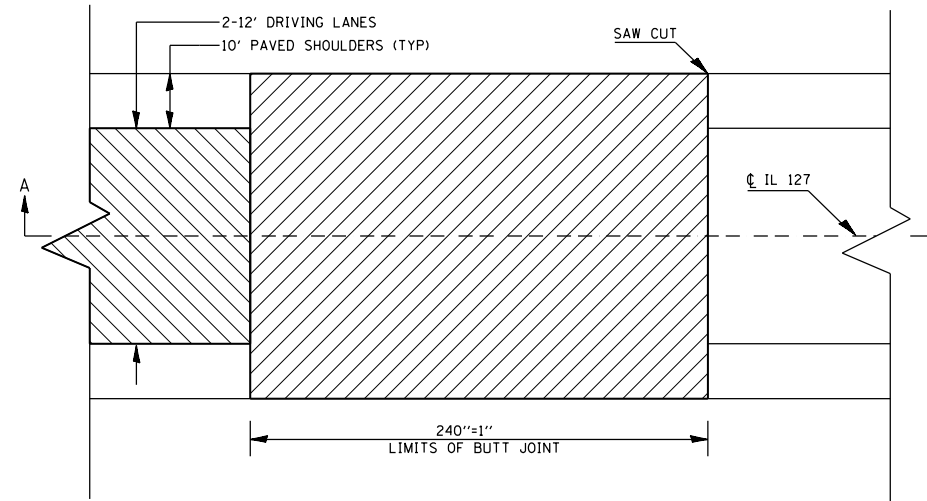
# BUTT JOINT & SIDE ROAD DETAILS LOCATION 3 NOT TO SCALE

TYPE	NUMBER
PRIVATE ENT.	54
COMMERCIAL ENT.	11
SIDE ROAD	10

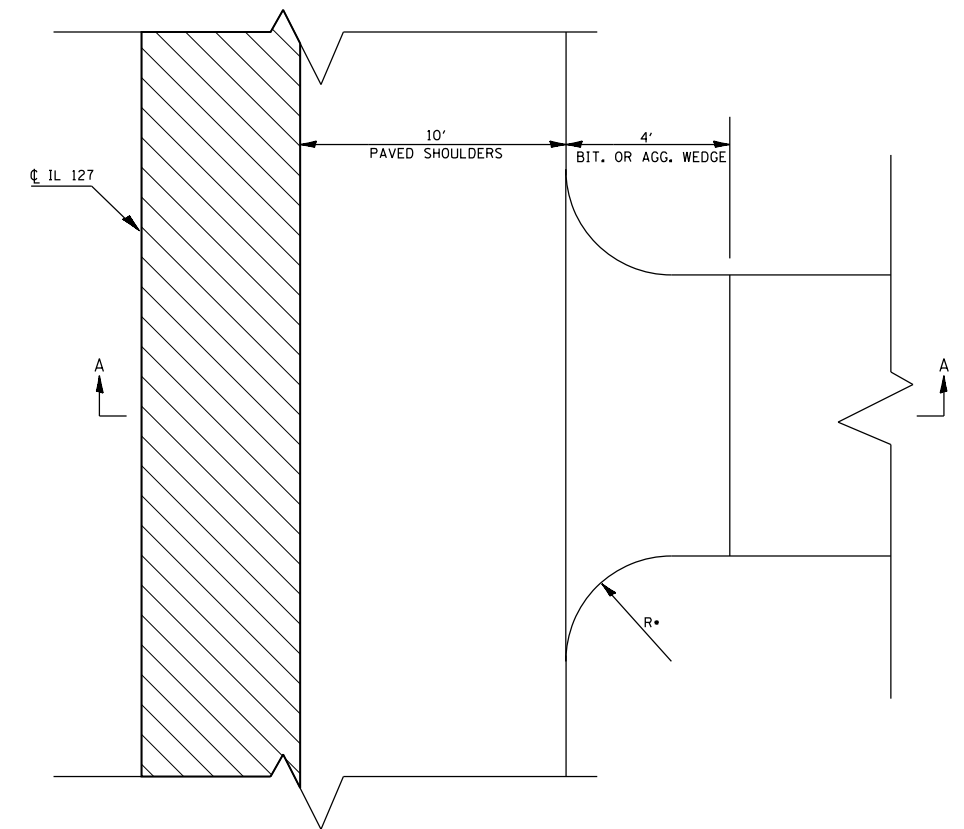


PLAN VIEW

R• - MATCH EXISTING

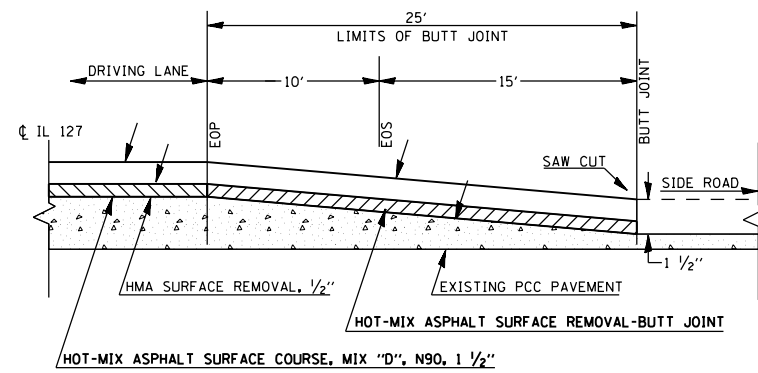


PLAN VIEW



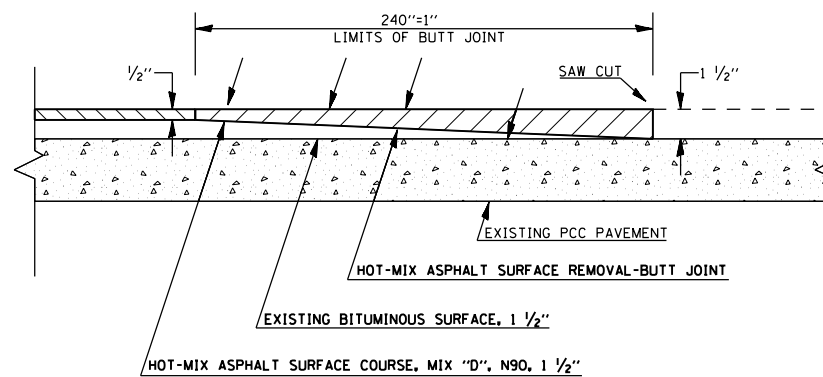
PLAN VIEW

R• - MATCH EXISTING



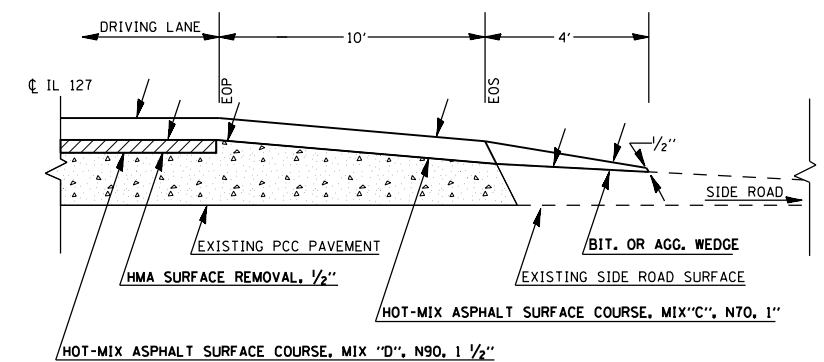
SECTION A-A

TO BE USED:  
SWANWICK-RICE ROAD  
TODD'S MILL ROAD



SECTION A-A

TO BE USED:  
STA 190+00 TO STA 190+20  
STA 271+91.372 TO STA 272+11.372  
STA 273+58.6 TO STA 273+78.6  
STA 280+86.91 TO STA 281+06.91  
STA 283+45.09 TO STA 283+65.09  
STA 498+45.8 TO STA 498+65.8



SECTION A-A

TO BE USED:  
BETHEL CHURCH ROAD  
FINCH ROAD  
CARNATION ROAD  
PURPLE MARTIN ROAD  
DIST 212 ROAD  
BAPTIST CAMP ROAD  
MIDWAY COURT  
KILDEER ROAD

FILE NAME =	USER NAME = \$USER\$	DESIGNED -	REVISED -
ci:\pw\work\p\dot\lavender\ba\d0302467\78292-sht-plan.dgn		DRAWN -	REVISED -
	PLOT SCALE = 100.0000' / 1"	CHECKED -	REVISED -
	PLOT DATE = 3/22/2012	DATE -	REVISED -

**STATE OF ILLINOIS  
DEPARTMENT OF TRANSPORTATION**

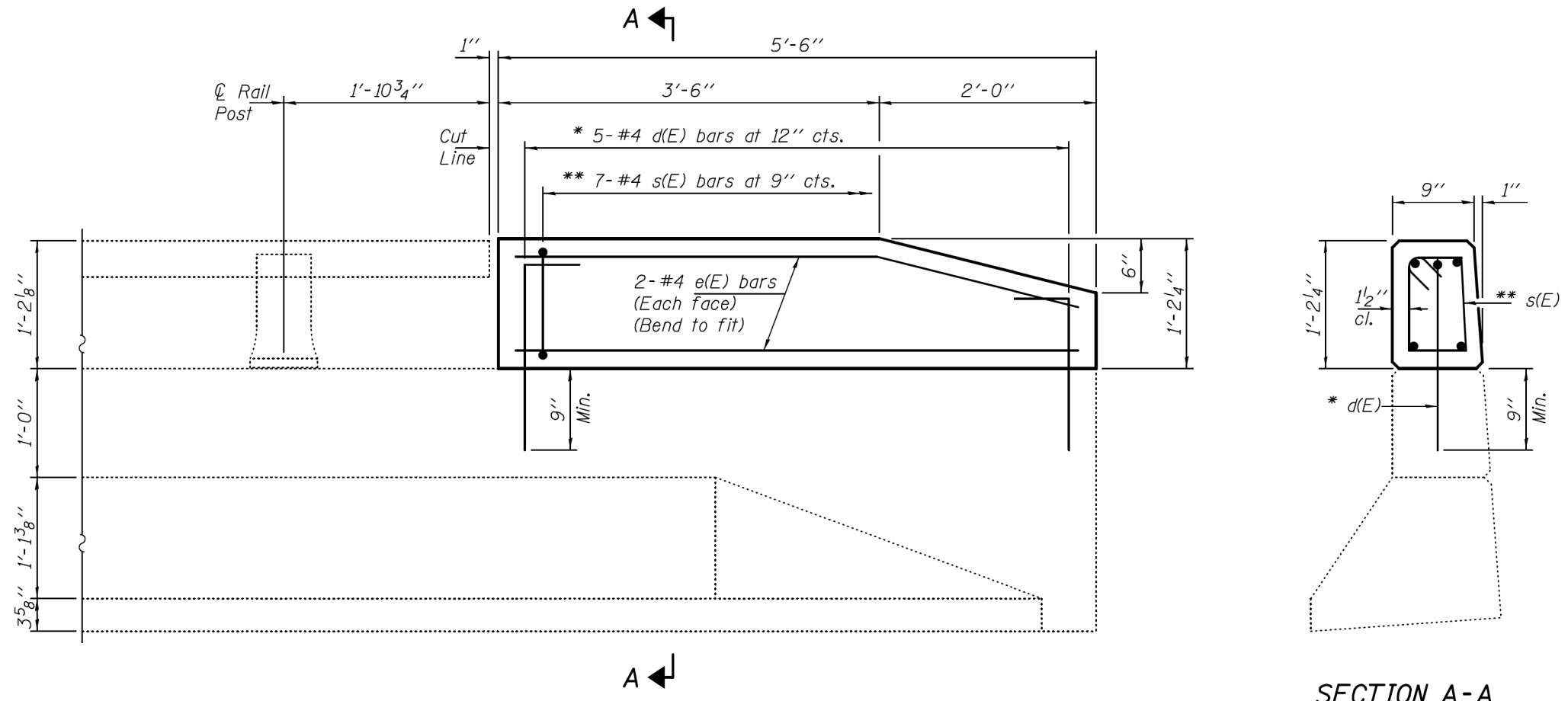
<b>BUTT JOINT, ENTRANCE, &amp; SIDE ROAD DETAIL</b>			
SCALE:	SHEET	OF SHEETS	STA. TO STA.

*FAP 42/FAU 9668/9669		*PERRY & JACKSON	
F.A. RTE.	SECTION	COUNTY	TOTAL SHEETS
	(8,103) RS-2; (12-2) RS-1		19
			SHEET NO. 16
CONTRACT NO. 78292			
ILLINOIS FED. AID PROJECT			



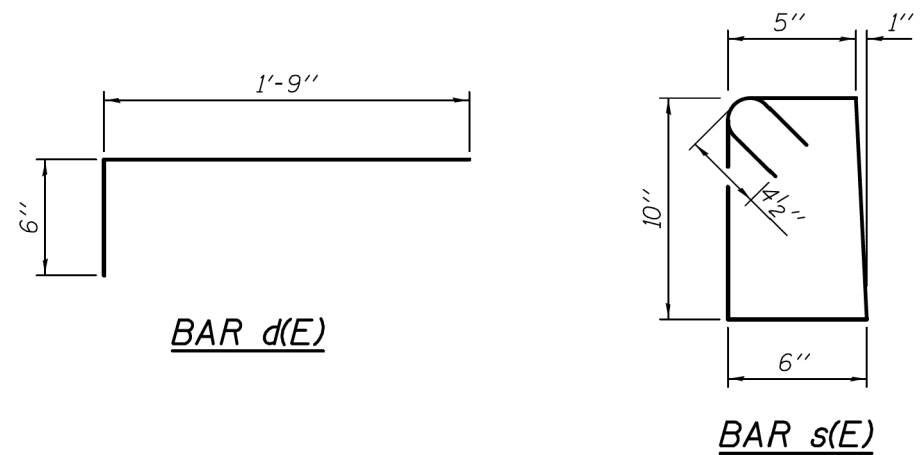
# PARAPET DETAILS

## SN 073-0025 & SN 073-0026



INSIDE ELEVATION OF PARAPET

SECTION A-A



\* d(E) bars to be epoxy grouted in 7/8"φ x 9" minimum holes. Cut in field as required.

\*\* Tilt s(E) bars as needed to fit.

Note

To be used: All sections where proposed Traffic Barrier Terminal, Type 6 will tie into existing parapet wall (8 sections total). (See Highway Standard 631031-10)

BILL OF MATERIAL

Bar	No.	Size	Length	Shape
d	5	#4	2'-3"	┌
e	5	#4	5'-3"	—
s	7	#4	3'-4"	□
Concrete Parapet			Cu. Yd.	0.17
Reinforcement Bars			Pound	40.6

TOTAL BILL OF MATERIAL

Bar	No.	Size	Length	Shape
d	40	#4	2'-3"	┌
e	40	#4	5'-3"	—
s	56	#4	3'-4"	□
Concrete Parapet			Cu. Yd.	1.36
Reinforcement Bars			Pound	325

FILE NAME =	USER NAME = USER*	DESIGNED -	REVISED -
ct:\pw\work\p1dot\lavenderba\d0302467\78292-sht-plen.dgn		DRAWN -	REVISED -
	PLOT SCALE = 100.0000' / in.	CHECKED -	REVISED -
	PLOT DATE = 3/22/2012	DATE -	REVISED -

**STATE OF ILLINOIS  
DEPARTMENT OF TRANSPORTATION**

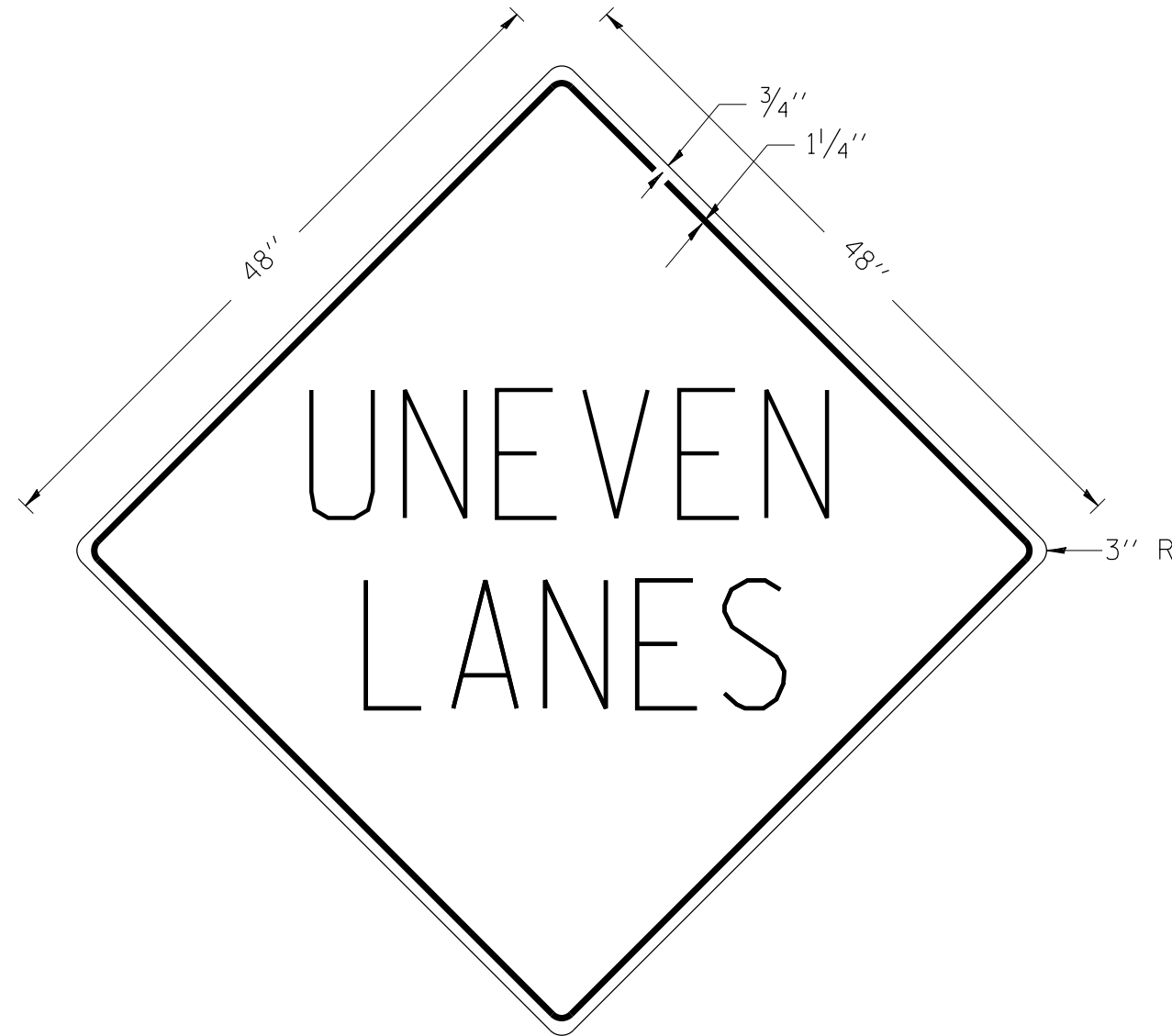
**PARAPET DETAILS  
SN 073-0025 & SN 073-0026**

SCALE: SHEET OF SHEETS STA. TO STA.

*FAP 42/FAU 9668/9669		*PERRY & JACKSON	
F.A. RTE.	SECTION	COUNTY	TOTAL SHEETS
	(8,103) RS-2; (12-2) RS-1		19
			SHEET NO. 17
CONTRACT NO. 78292			
ILLINOIS FED. AID PROJECT			

# UNEVEN LANES SIGN

W8-11 (48'' x 48'')



**COLORS:**

LEGEND AND BORDER - BLACK NON-REFLECTORIZED  
 BACKGROUND - ORANGE REFLECTORIZED

**NOTE:** PRIOR TO ALLOWING TRAFFIC ON ANY PORTION OF THE ROADWAY THAT HAS BEEN COLDMILLED OR BEFORE RESURFACING OPERATIONS BEGIN, THE CONTRACTOR SHALL HAVE ERECTED "UNEVEN PAVEMENT" SIGNS THAT CONFORM TO THE ABOVE DETAILS. A MINIMUM OF ONE SIGN AT EACH END OF THE IMPROVEMENT WILL BE REQUIRED. THE CONTRACTOR SHALL MAINTAIN THE "UNEVEN PAVEMENT" SIGNS UNTIL THE RESURFACING OPERATIONS ARE COMPLETED.

IF AT ANY TIME THE SIGNS ARE IN PLACE BUT NOT APPLICABLE, THEY SHALL BE TURNED FROM THE VIEW OF MOTORISTS OR COVERED AS DIRECTED BY THE ENGINEER.

THE COST OF FURNISHING, ERECTING, MAINTAINING, AND REMOVING THE REQUIRED SIGNS SHALL BE INCLUDED IN THE CONTRACT.

REVISIONS

DRAWN	2-15-89
REVISED	4-06-93
REDSIGNED	7-23-04
RESIZED	5-08-08

STD. 9-41

FILE NAME =	USER NAME = \$USER\$	DESIGNED -	REVISED -
et:\pwork\pwork\lavenderba\d0302467\78292-sht-pln.dgn		DRAWN -	REVISED -
	PLOT SCALE = 100.0000' / 1in.	CHECKED -	REVISED -
	PLOT DATE = 3/22/2012	DATE -	REVISED -

STATE OF ILLINOIS  
 DEPARTMENT OF TRANSPORTATION

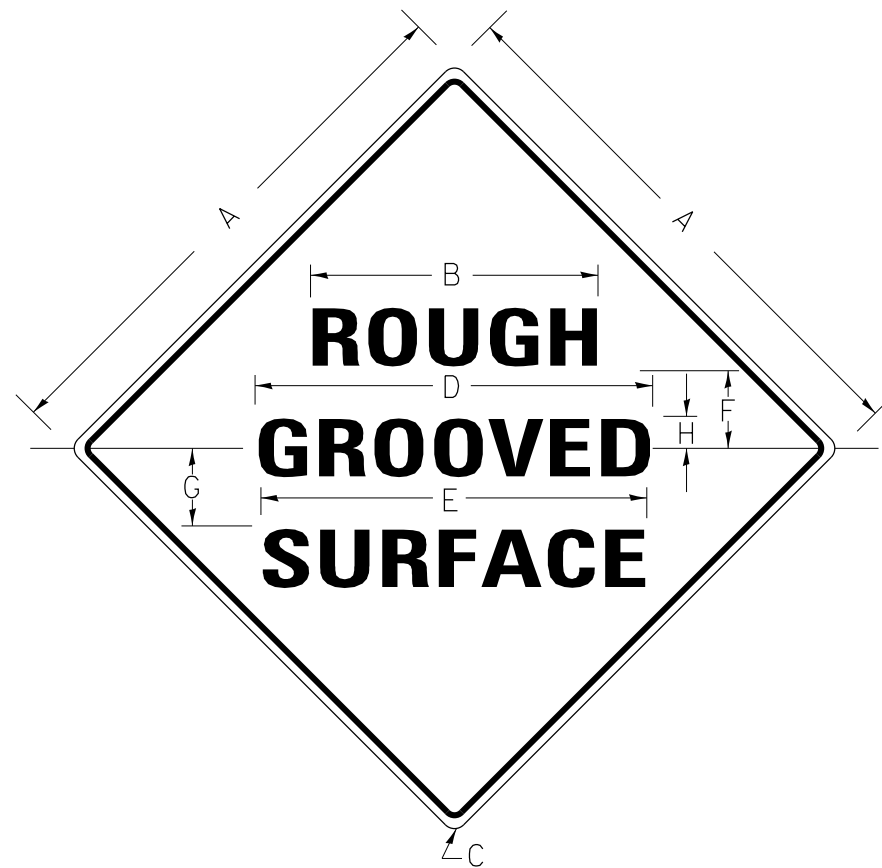
UNEVEN LANES SIGN DETAILS

SCALE: SHEET OF SHEETS STA. TO STA.

*FAP 42/FAU 9668/9669		*PERRY & JACKSON	
F.A. RTE.	SECTION	COUNTY	TOTAL SHEETS
	(8,103) RS-2; (12-2) RS-1		19
			SHEET NO. 18
CONTRACT NO. 78292			
ILLINOIS FED. AID PROJECT			

# ILLINOIS STANDARD

W8-I106



## COLORS:

LEGEND AND BORDER- BLACK NON-REFLECTORIZED  
BACKGROUND- ORANGE REFLECTORIZED

SIGN SIZE	DIMENSIONS							
	A	B	C	D	E	F	G	H
48X48	48.0	24.1	3.0	34.0	33.0	6.0	13.0	3.5

SIGN SIZE	SERIES LINES			MAR-GIN	BOR-DER	BLANK STD.
	1	2	3			
	48X48	7C	7C			

ALL DIMENSIONS IN INCHES

## NOTES:

PRIOR TO ALLOWING TRAFFIC ON ANY PORTION OF THE ROADWAY THAT HAS BEEN COLDMILLED, THE CONTRACTOR SHALL HAVE ERECTED "ROUGH GROOVED SURFACE" SIGNS THAT CONFORM TO THE ABOVE DETAILS. A MINIMUM OF ONE SIGN AT EACH END OF THE IMPROVEMENT WILL BE REQUIRED. THE CONTRACTOR SHALL MAINTAIN THE "ROUGH GROOVED SURFACE" SIGNS UNTIL THE COLDMILLED SURFACE IS COVERED WITH LEVELING BINDER OR SURFACE COURSE.

IF AT ANY TIME THE SIGNS ARE IN PLACE BUT NOT APPLICABLE, THEY SHALL BE TURNED FROM THE VIEW OF MOTORISTS OR COVERED AS DIRECTED BY THE ENGINEER.

THE COST OF FURNISHING, ERECTING, MAINTAINING, AND REMOVING THE REQUIRED SIGNS SHALL BE INCLUDED IN THE CONTRACT.

## REVISIONS

REDRAWN	2-15-89
REVISED	4-6-93
REVISED	3-27-08
REVISED	

STD. 9-39

FILE NAME =	USER NAME = \$USER\$	DESIGNED -	REVISED -	<b>STATE OF ILLINOIS DEPARTMENT OF TRANSPORTATION</b>	<b>ROUGH GROOVED SURFACE SIGN DETAILS</b>	F.A. RTE.	SECTION	COUNTY	TOTAL SHEETS	SHEET NO.	
et:\pw\work\p1dot\lavenderba\d0302467\78292-sht-pln.dgn	8292-sht-pln.dgn	DRAWN -	REVISED -			(8,103) RS-2; (12-2) RS-1	•	•	19	19	
PLOT SCALE = 100.0000' / in.		CHECKED -	REVISED -			CONTRACT NO. 78292					
PLOT DATE = 3/22/2012		DATE -	REVISED -			ILLINOIS FED. AID PROJECT					
				SCALE:	SHEET OF SHEETS	STA.	TO STA.				

\*FAP 42/FAU 9668/9669 \*PERRY & JACKSON