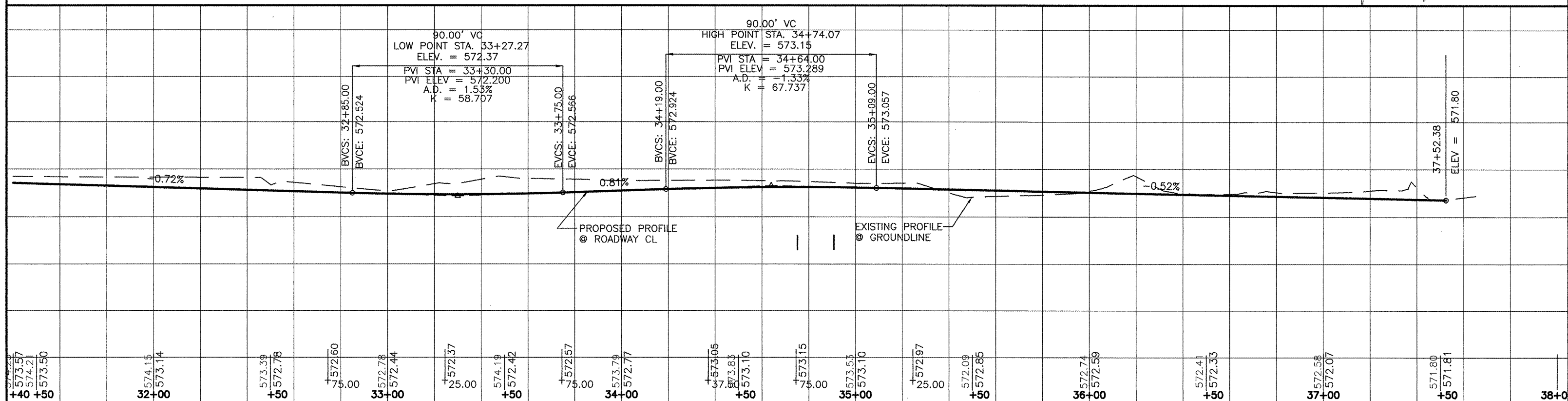


CURVE	C1	C2
LENGTH	129.55'	175.98'
RADIUS	193.3	225.0
DELTA	38°23'54"	44°48'44"
TANGENT	67.31'	92.77'
EXTERNAL	11.38'	18.37'
PC STA	34+35.90	35+65.44
PI STA	35+03.21	36+58.21
PT STA	35+65.441	37+41.42



CITY OF MOLINE
DEPARTMENT OF PUBLIC WORKS - ENGINEERING DIVISION
3635 4TH AVENUE, MOLINE, IL 61265
(309) 524-2350
CITY ENGINEER - SCOTT HINTON, P.E.

RIVERTech BOULEVARD
34TH STREET, SOUTH OF RIVER DRIVE
PLAN & PROFILE

Date	4-4-12	IDOT COMMENTS
Revision		

Date	12-13-11	Sheet	8
Scale	1"=20'	OF	34
Design Engineer	JC,MF	Project	MFT 239