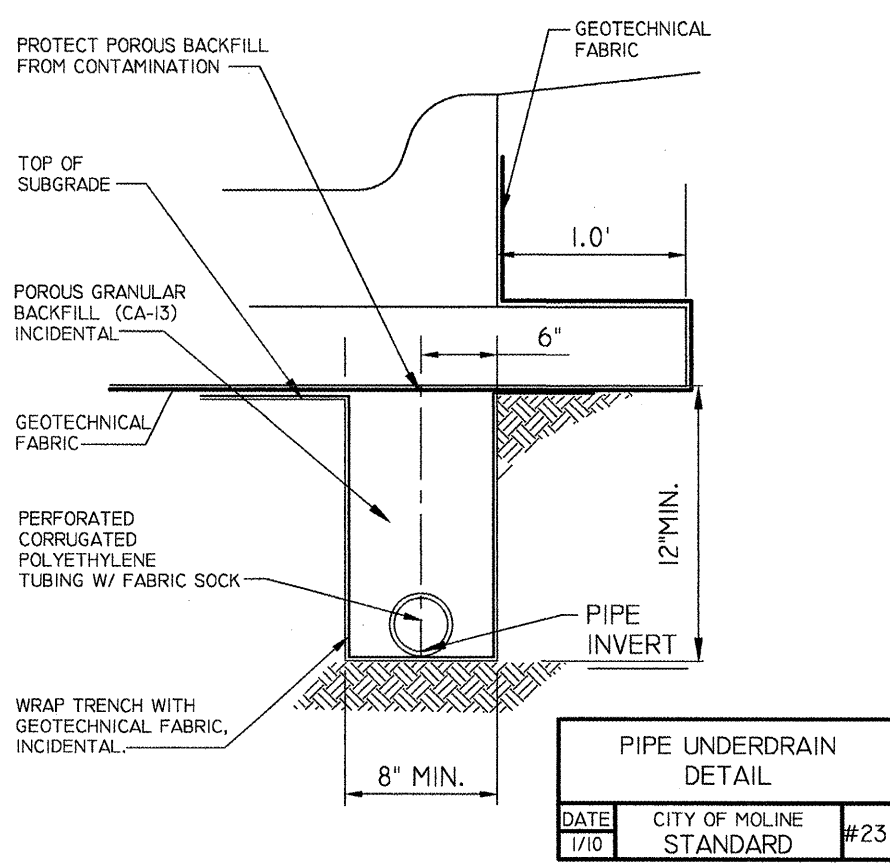
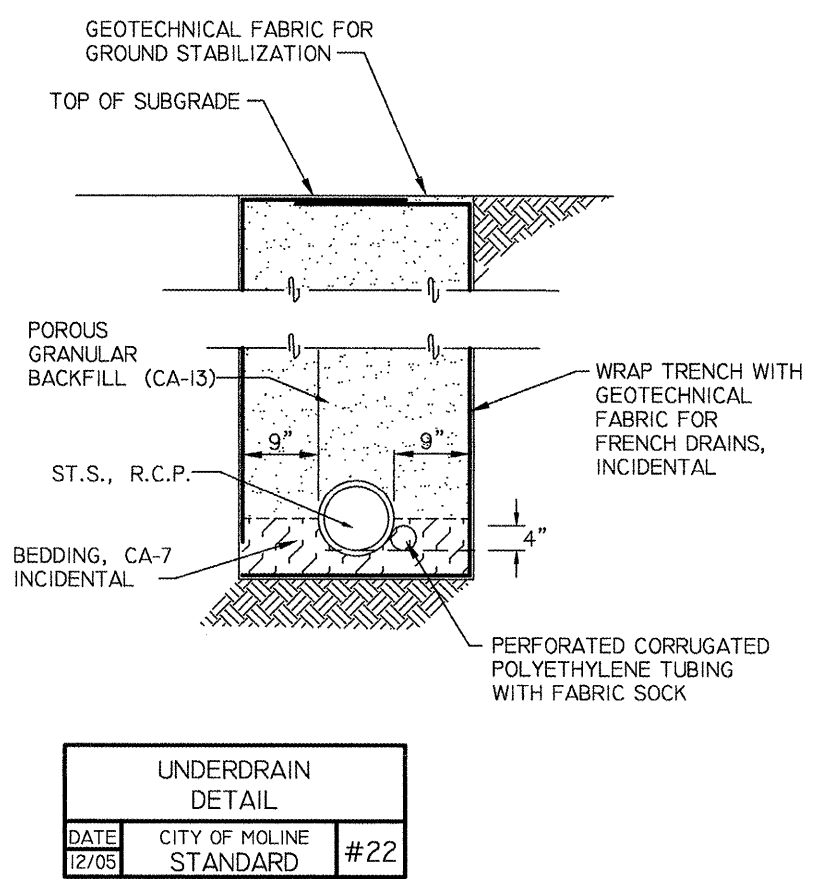
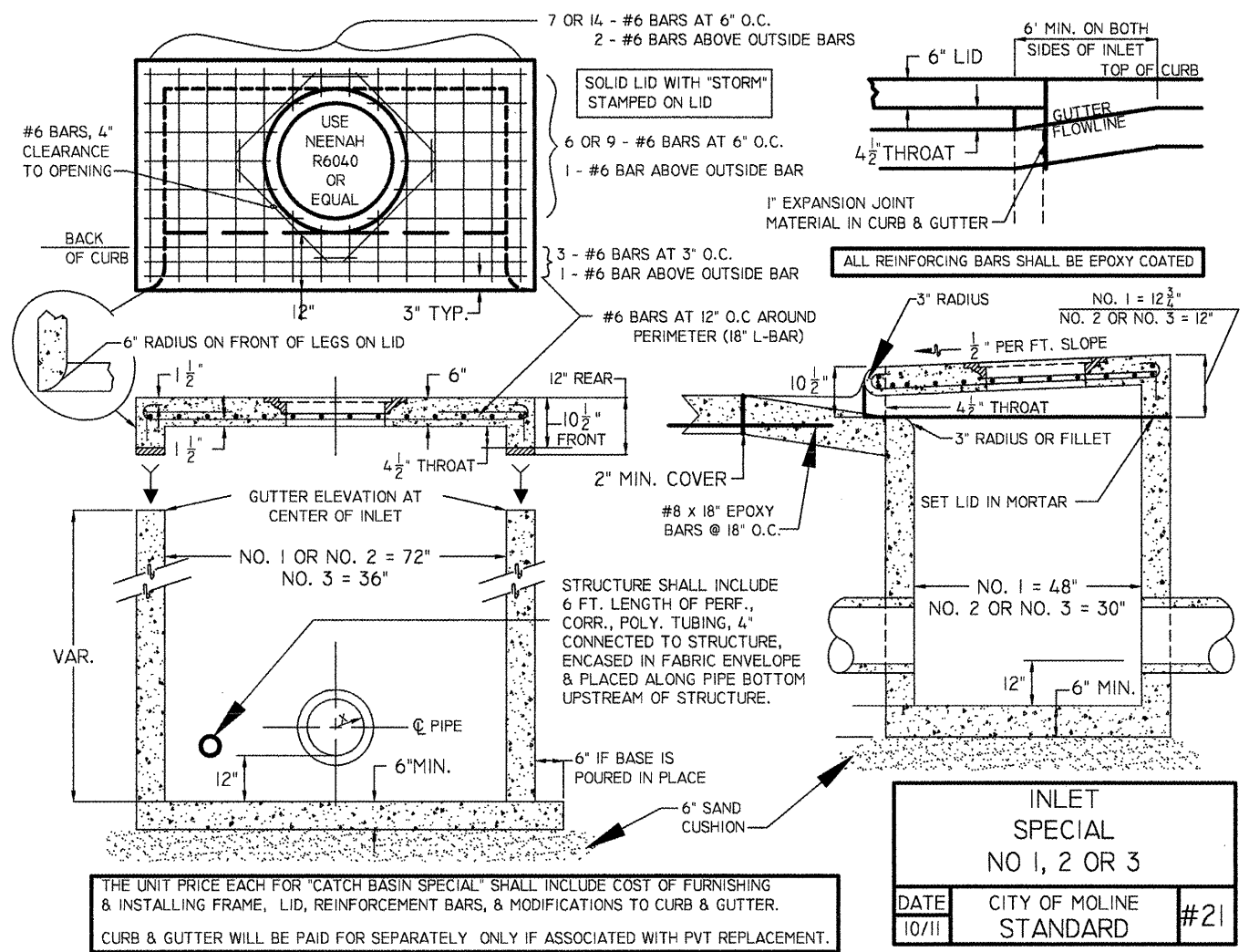


F.A.U. RTE	SECTION	COUNTY	TOTAL SHEETS	SHEET NO.
MS1015	08-00239-00-RP	ROCK ISLAND	34	34



CITY OF MOLINE
 DEPARTMENT OF PUBLIC WORKS - ENGINEERING DIVISION
 3635 4TH AVENUE, MOLINE, IL 61265
 (309) 524-2350
 CITY ENGINEER - SCOTT HINTON, P.E.

RIVERTECH BOULEVARD
 34TH STREET, SOUTH OF RIVER DRIVE
 DETAILS

Date	Revision

Date	12/13/11	Sheet	34
Scale	N.T.S.	of	34
Design Engineer	JC	Project	MFT 239