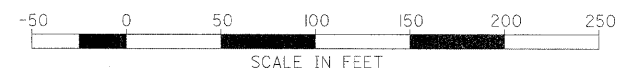


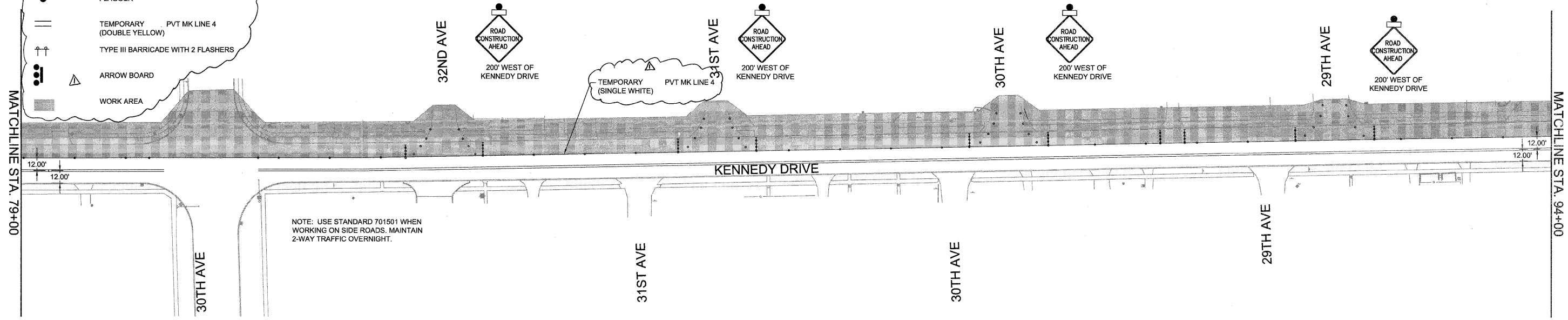
LEGEND

- TYPE 1/TYPE 2 BARRICADE WITH FLASHER
- DRUM WITH FLASHER
- FLAGGER
- TEMPORARY PVT MK LINE 4 (DOUBLE YELLOW)
- TYPE III BARRICADE WITH 2 FLASHERS
- ARROW BOARD
- WORK AREA

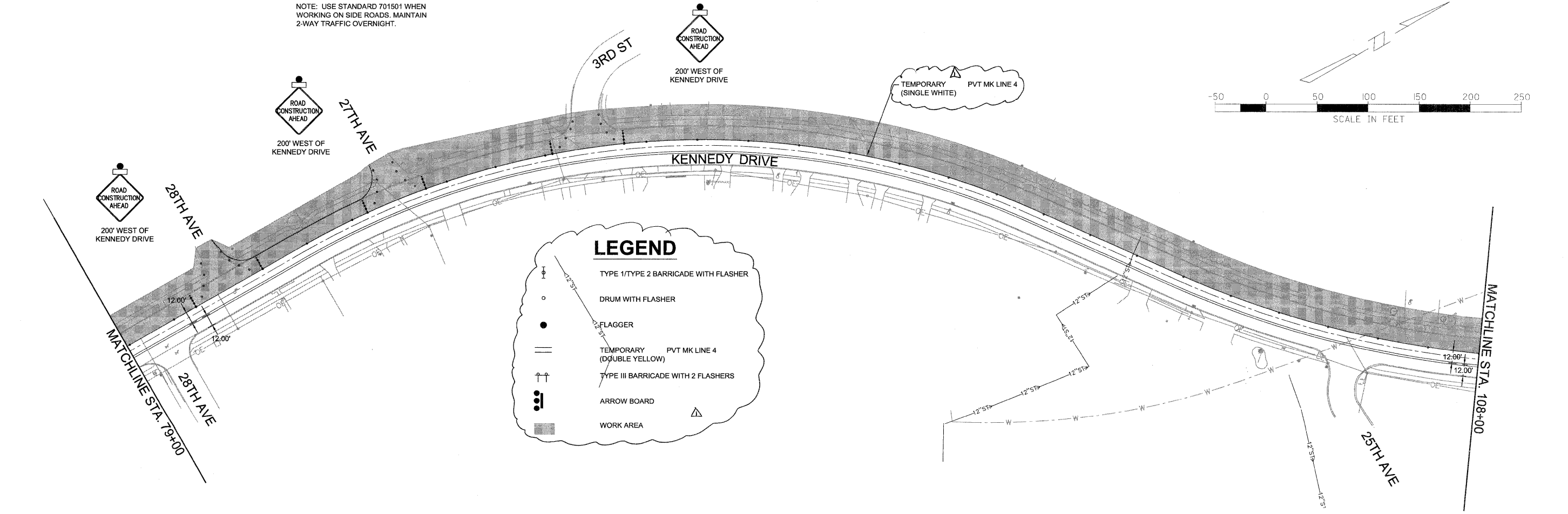
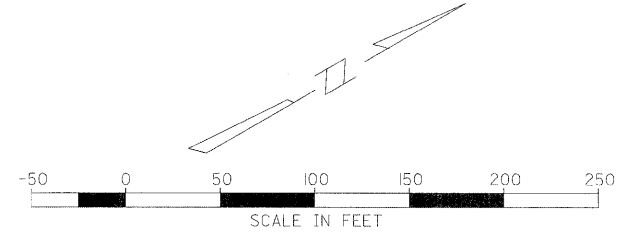


MATCHLINE STA. 79+00

MATCHLINE STA. 94+00



NOTE: USE STANDARD 701501 WHEN WORKING ON SIDE ROADS. MAINTAIN 2-WAY TRAFFIC OVERNIGHT.



LEGEND

- TYPE 1/TYPE 2 BARRICADE WITH FLASHER
- DRUM WITH FLASHER
- FLAGGER
- TEMPORARY PVT MK LINE 4 (DOUBLE YELLOW)
- TYPE III BARRICADE WITH 2 FLASHERS
- ARROW BOARD
- WORK AREA

FILE NAME = P:\Projects\M0\3113710\DWG

USER NAME =
 PLOT SCALE =
 PLOT DATE =

DESIGNED - PRL
 DRAWN - PRL
 CHECKED - PRL
 DATE - 17APR2012

REVISED - Δ 6-5-12
 REVISED -
 REVISED -
 REVISED -

STATE OF ILLINOIS
 DEPARTMENT OF TRANSPORTATION

TRAFFIC CONTROL
 STAGE 2

SCALE: SHEET 7 OF 23 SHEETS STA. TO STA.

F.A.U. RTE. 5849	SECTION II-00151-00-RS	COUNTY ROCK ISLAND	TOTAL SHEETS 75	SHEET NO. 37
CONTRACT NO. 85558				
ILLINOIS FED. AID PROJECT				