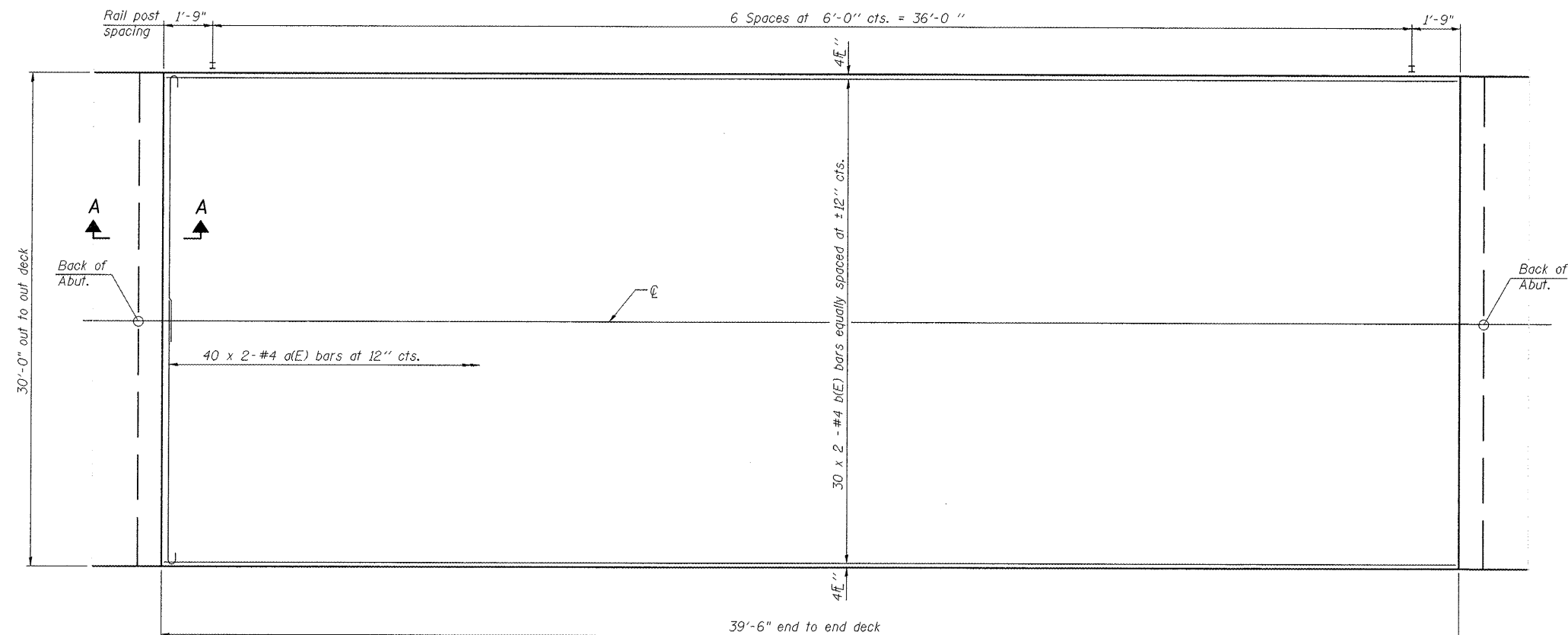
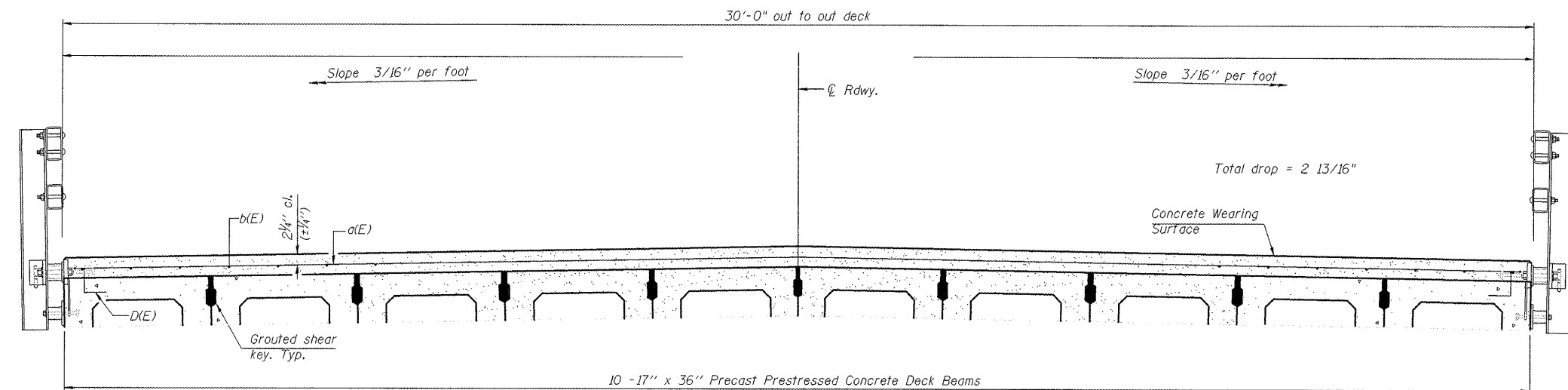


FAS ROUTE NO.	SEC	COUNTY	TOTAL SHEETS	SHEET NO.
178	*	LEE	14	9

ILLINOIS PROJECT BRS-0178(105)
 * 11-00317-00-BR
 CONTRACT NO. 85560



PLAN



CROSS SECTION
(Looking)

Notes:
 See sheet 10 of 14 for Superstructure Details and Bill of Material.
 Bars Indicated thus 20 x 2- #4 etc. indicates 20 lines of bars with 2 lengths per line.

MINIMUM BAR LAP
 #4 bar = 2'-0"

SECTION A-A

Notes:
 All concrete wearing surfaces shall be placed prior to casting a backwall and/or approach slab.
 See sheet of for fabric bearing pad details.

SCALE: 1" = 10'

REVISION	DATE

DESIGNED BY:	CHKD BY:
DRAWN BY:	APPROVED BY:
SUPERVISOR:	DATE:
PROJECT NO.:	SCALE:

wendler

GROUND-BREAKING SOLUTIONS
 engineers - surveyors - scientists

www.wendlerinc.com ph: 615.288.2281
 Illinois Professional Design Firm No. 184-000948

SUPERSTRUCTURE DETAILS
 OF
 PAW PAW ROAD BRIDGE
 FOR
 LEE COUNTY HIGHWAY DEPARTMENT

SHEET TITLE

DETAILS

JOB NUMBER
 2110221

DATE
 03/23/2012

SHEET NO.

9 of 14

PDS-S-R34-0 7-1-10

S.N. 052-3513
 17" X 36" PPC DECK BEAM
 CONCRETE OVERLAY DETAILS
 SECTION 11-00317-00-BR
 LEE COUNTY