

GENERAL NOTES

- REMOVAL AND DISPOSAL OF UNSUITABLE MATERIAL, AND POROUS GRANULAR EMBANKMENT SUBGRADE HAS BEEN ADDED FOR USE IF UNSUITABLE MATERIAL IS ENCOUNTERED IN THE FIELD, AS DETERMINED BY THE ENGINEER. IF UNSUITABLE AND/OR UNSTABLE MATERIAL IS NOT ENCOUNTERED, THEN THE QUANTITY SHALL BE DEDUCTED AND NO COMPENSATION WILL BE DUE THE CONTRACTOR.
- FORTY EIGHT HOURS BEFORE STARTING EXCAVATION THE CONTRACTOR WILL CALL J.U.L.I.E. (1-800-892-0123) TO HAVE THE LOCATION OF EXISTING UTILITIES STAKED.
- THE CONTRACTOR SHALL CONTACT THE CITY OF ROCKFORD AT LEAST 72 HOURS IN ADVANCE OF BEGINNING ANY WORK ON REED AVENUE.
- THE CONTRACTOR WILL NOT BE ALLOWED TO SET UP A YARD OR FIELD OFFICE ON CITY PROPERTY WITHOUT WRITTEN PERMISSION FROM THE CITY OF ROCKFORD.
- PRIOR TO COMMENCEMENT OF CONSTRUCTION, THE CONTRACTOR SHALL VERIFY ALL DIMENSIONS AND CONDITIONS AFFECTING THEIR WORK WITH THE ACTUAL CONDITIONS AT THE JOB SITE. IN ADDITION, THE CONTRACTOR MUST VERIFY THE ENGINEER'S LINE AND GRADE STAKES. IF THERE ARE ANY DISCREPANCIES FROM WHAT IS SHOWN ON THE CONSTRUCTION PLANS, HE MUST IMMEDIATELY REPORT SAME TO THE ENGINEER BEFORE DOING ANY WORK, OTHERWISE THE CONTRACTOR ASSUMES FULL RESPONSIBILITY. IN THE EVENT OF DISAGREEMENT BETWEEN THE CONSTRUCTION PLANS, STANDARD SPECIFICATIONS AND/OR SPECIAL DETAILS, THE CONTRACTOR SHALL SECURE WRITTEN INSTRUCTIONS FROM THE ENGINEER PRIOR TO PROCEEDING WITH ANY PART OF THE WORK AFFECTED BY OMISSIONS OR DISCREPANCIES. FAILING TO SECURE SUCH INSTRUCTIONS, THE CONTRACTOR WILL BE CONSIDERED TO HAVE PROCEEDED AT HIS OWN RISK AND EXPENSE. IN THE EVENT OF ANY DOUBT OR QUESTION ARISING WITH RESPECT TO THE TRUE MEANING OF THE CONSTRUCTION PLANS OR SPECIFICATIONS, THE DECISION OF THE ENGINEER SHALL BE FINAL AND CONCLUSIVE.
- THE CONTRACTOR SHALL PROVIDE ACCESS TO ALL ADJUTING PROPERTY AT ALL TIMES DURING THE CONSTRUCTION OF THIS PROJECT, EXCEPT FOR PERIODS OF SHORT DURATION AS DETERMINED BY THE ENGINEER.
- EXCEPT AS NOTED ON THE PLANS, PAVEMENT GRADES SHOWN ARE AT THE TOP OF PAVEMENT SURFACES.
- OFFSET LOCATIONS GIVEN IN THE PLANS FOR STRUCTURES, EDGE OF PAVEMENT, ETC. ARE FROM THE ROADWAY CENTERLINE UNLESS NOTED OTHERWISE.
- ALL ELEVATIONS REFERRING TO U.S.G.S. MEAN SEA LEVEL DATUM.

10. THE LOCATION OF EXISTING DRAINAGE STRUCTURES, STORM SEWERS, WATER MAINS, SANITARY SEWERS, AND ANY OTHER PUBLIC OR PRIVATE UTILITIES AS SHOWN ON THE PLANS IS APPROXIMATE AND THEIR EXACT LOCATION IS TO BE DETERMINED IN THE FIELD BY THE CONTRACTOR. THIS WORK SHALL BE CONSIDERED AS INCLUDED IN THE UNIT BID PRICES OF THE CONTRACT, AND NO ADDITIONAL COMPENSATION WILL BE ALLOWED.

11. THE CONTRACTOR SHALL BE RESPONSIBLE FOR THE PROTECTION OF ALL UNDERGROUND AND SURFACE UTILITIES EVEN THOUGH THEY MIGHT NOT BE SHOWN ON THE PLANS. ANY UTILITY PROPERTY DAMAGED DURING CONSTRUCTION SHALL BE REPAIRED OR REPLACED TO THE SATISFACTION OF THE OWNER AT THE CONTRACTOR'S EXPENSE.

12. ANY LOOSE MATERIAL DEPOSITED IN THE FLOWLINES OF DRAINAGE STRUCTURES WHICH OBSTRUCT THE NATURAL FLOW OF WATER SHALL BE REMOVED AT THE CLOSE OF EACH WORKING DAY. PRIOR TO ACCEPTANCE OF THE IMPROVEMENT, ALL DRAINAGE STRUCTURES SHALL BE FREE OF DIRT AND DEBRIS. THIS WORK SHALL NOT BE PAID FOR SEPARATELY BUT SHALL BE CONSIDERED AS INCLUDED IN THE UNIT BID PRICES OF THE CONTRACT.

13. WHERE NEW WORK MEETS EXISTING FEATURES TO REMAIN, THE CONTRACTOR SHALL FIELD CHECK ALL DIMENSIONS AND ELEVATIONS PRIOR TO PROCEEDING WITH CONSTRUCTION AND NOTIFY THE ENGINEER IMMEDIATELY OF ANY DISCREPANCIES.

14. SEEDING WILL NOT BE PERMITTED AT ANY TIME WHEN THE GROUND IS FROZEN, WET, OR IN AN UNTILLABLE CONDITION. LOCATIONS TO BE SEEDDED WILL BE DETERMINED BY THE ENGINEER. SEE ARTICLE 250.06 OF THE STANDARD SPECIFICATIONS.

15. SAW CUTTING WILL BE REQUIRED FOR ALL REMOVAL ITEMS LISTED IN SECTION 440 OF THE STANDARD SPECIFICATIONS, SHOWN IN THE PLANS, AND AS DIRECTED BY THE ENGINEER. THE COST OF SAW CUTTING WILL BE INCLUDED IN CONTRACT UNIT BID PRICES FOR THE ITEMS BEING REMOVED.

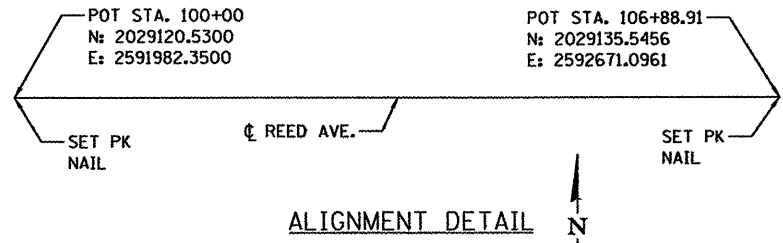
16. THE ENGINEER WILL BE THE SOLE JUDGE CONCERNING CURING TIME FOR THE VARIOUS HMA LIFTS.

17. INCIDENTAL GRADING, EARTHWORK AND SHAPING FOR PROPOSED SIDEWALK AND RESTORATION SHALL BE INCLUDED IN THE COST OF THE ASSOCIATED PAY ITEMS.

18. SHORT TERM PAVEMENT MARKING HAS BEEN ADDED FOR USE IF NEEDED TO MAINTAIN TRAFFIC CONTROL, AS DETERMINED BY THE ENGINEER. IF THIS IS NOT REQUIRED TO MAINTAIN TRAFFIC CONTROL, THEN THE QUANTITY SHALL BE DEDUCTED AND NO COMPENSATION WILL BE DUE THE CONTRACTOR.

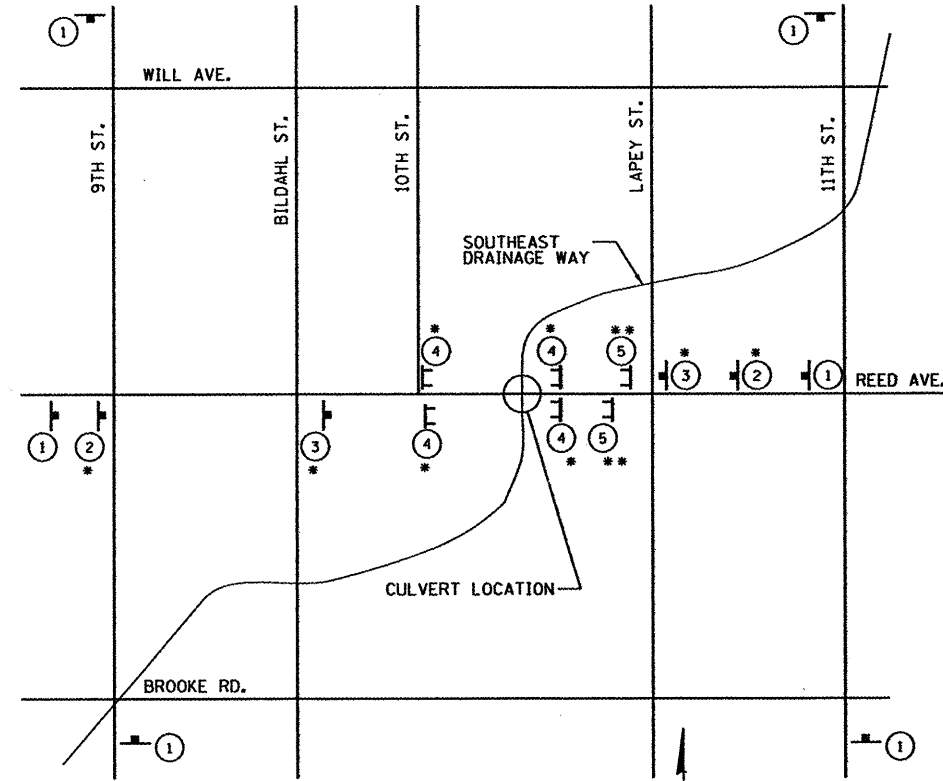
SYMBOL LEGEND

	EXISTING	PROPOSED
SANITARY MANHOLE	⊙	⊙
STORM MANHOLE	⊙	⊙
STORM CATCH BASIN	○	○
INLET	□	□
FLARED END SECTION	▷	▷
VALVE VAULT	⊙	⊙
FIRE HYDRANT	▽	▽
LIGHT POLE	*	*
STREET SIGN	+	+
REGULATORY SIGN	+	+
UTILITY POLE	○	○
UTILITY BOX	⊙	⊙
MAILBOX	⊙	⊙
WELL	⊙	⊙
SANITARY SEWER	—	—
STORM SEWER	—	—
CULVERT	—	—
WATER MAIN	—	—
WATER MAIN ENCASEMENT	—	—
STORM UNDERDRAIN	—	—
ELECTRIC LINE	—	—
TELEPHONE LINE	—	—
GAS LINE	—	—
CABLE TV LINE	—	—
TREELINE	—	—
TREE	⊙	⊙
FENCE	—	—
EROSION CONTROL FENCE	—	—
DITCH CHECK	—	—
DRAINAGE ARROW	→	→
100 YEAR OVERFLOW	—	—



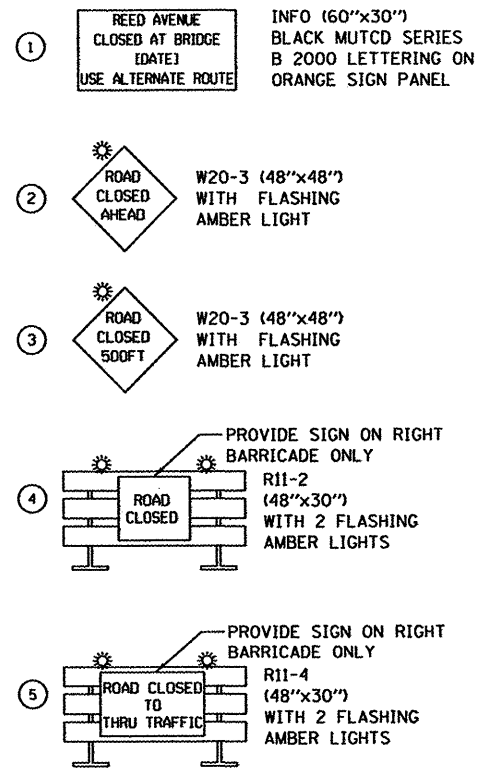
UTILITY CONTACTS

CITY OF ROCKFORD WATER DIVISION	GREG CASSARO	(815) 987-3084
ROCK RIVER WATER RECLAMATION DISTRICT	DANA L. CARROL	(815) 387-7663
COMCAST	DONNA ZIES	(815) 395-8977
COMED	MIKE LENOX	(815) 490-2869
AT&T	DAVID SAINT GERMAIN	(815) 394-7297
NICOR	SCOTT PUFFER	(815) 455-0271



• FURNISH AND PLACE IN ACCORDANCE WITH HIGHWAY STANDARD B.L.R. 21-9

•• FURNISH AND PLACE IN ACCORDANCE WITH HIGHWAY STANDARD B.L.R. 22-7



STANDARD ABBREVIATIONS

B.C.	- BACK OF CURB
B.O.C.	- BACK OF CURB
B.S.L.	- BUILDING SETBACK LINE
C.B.	- STORM CATCH BASIN
C.E.	- COMMONWEALTH EDISON CO.
D.E.	- DRAINAGE EASEMENT
E-E	- EDGE TO EDGE OF PAVEMENT
E.O.P.	- EDGE OF PAVEMENT
E.O.S.	- EDGE OF SHOULDER
EX	- EXISTING
F.E.S.	- FLARED END SECTION
I.B.T.	- ILLINOIS BELL TELEPHONE CO.
L.E.	- LANDSCAPE EASEMENT
M.H.	- MANHOLE (TYPE SPECIFIED ON PLANS)
PR	- PROPOSED
R.O.W	- RIGHT OF WAY
SHLD	- SHOULDER
T.B.F.	- TRENCH BACKFILL
T.C.	- TOP OF CURB
T.C.E.	- TEMPORARY CONSTRUCTION EASEMENT
T.O.B.	- TOP OF BERM
T.O.C.	- TOP OF CURB
U.E.	- UTILITY EASEMENT

COMPANY NAME: Revit 14. Ar-ff
PROJECT CONTACT: City of Rockford
CLIENT: DATE: 09/26/2012 10:00 AM
DRAWN BY: WJH
CHECKED BY: RGD
PLOT DRIVER: JLD
PEN TABLE: standard-trans.tbl