

MS	SECTION	COUNTY	TOTAL SHEETS	SHEET NO.
3634	09-00558-00-BR	WINNEBAGO	16	1
FED. ROAD DIST. NO. 2	ILLINOIS	CONTRACT NO. 85562		

06-15-12 LETTING ITEM 048

**INDEX OF SHEETS**

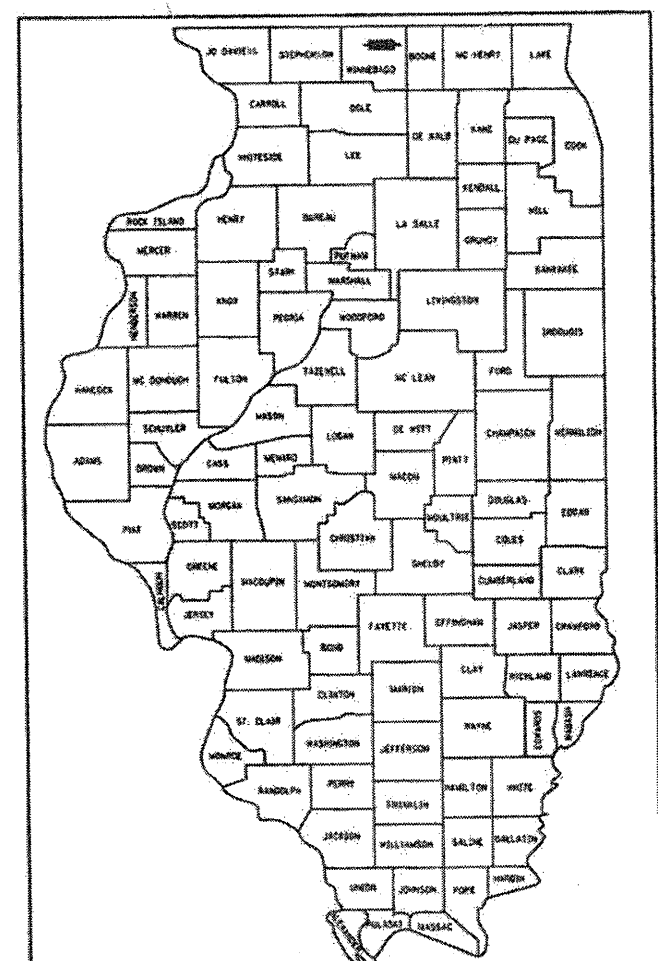
SHEET NO.	DESCRIPTION
1	COVER SHEET
2	GENERAL NOTES & ROAD CLOSURE DETAIL
3	SUMMARY OF QUANTITIES
4	TYPICAL SECTIONS
5	REMOVAL PLAN
6	PLAN AND PROFILE
7	EROSION CONTROL, PAVEMENT MARKING & RESTORATION PLAN
8-12	STRUCTURE PLANS
13	SIDEWALK RAMP DETAILS
14	SANITARY MANHOLE DETAILS
15-16	CROSS SECTIONS

**STATE STANDARDS**

000001-06	STANDARD SYMBOLS, ABBREVIATIONS AND PATTERNS
280001-06	TEMPORARY EROSION CONTROL SYSTEM
424001-06	PERPENDICULAR CURB RAMPS FOR SIDEWALKS
424011	CORNER PARALLEL CURB RAMPS FOR SIDEWALKS
424016	MID-BLOCK CURB RAMPS FOR SIDEWALKS
515001-03	NAME PLATE FOR BRIDGES
602001-02	CATCH BASIN TYPE A
602301-03	INLET - TYPE A
602401-03	MANHOLE TYPE A
604001-03	FRAME AND LIDS TYPE 1
604006-04	FRAME AND GRATE TYPE 3
606001-04	CONCRETE CURB TYPE B AND COMBINATION CONCRETE CURB AND GUTTER
701006-03	OFF-RD OPERATIONS, 2L, 2W, 15' TO 24" FROM PAVEMENT EDGE
701011-02	OFF-RD MOVING OPERATIONS, 2L, 2W, DAY ONLY
701301-04	LANE CLOSURE, 2L, 2W, SHORT TERM OPERATIONS
701501-06	URBAN LANE CLOSURE, 2L 2W, UNDIVIDED
701801-05	LANE CLOSURE MULTILANE 1W OR 2W CROSSWALK OR SIDEWALK CLOSURE
701901-02	TRAFFIC CONTROL DEVICES
720011-01	METAL POST FOR SIGNS, MARKERS & DELINEATORS
728001-01	TELESCOPING STEEL SIGN SUPPORT
729001-01	APPLICATIONS OF TYPES A & B METAL POSTS (FOR SIGNS & MARKERS)
780001-03	TYPICAL PAVEMENT MARKINGS
BLR 21-9	TYPICAL APPLICATIONS OF TRAFFIC CONTROL DEVICES FOR CONSTRUCTION ON RURAL LOCAL HIGHWAYS
BLR 22-7	TYPICAL APPLICATION OF TRAFFIC CONTROL DEVICES FOR CONSTRUCTION ON RURAL LOCAL HIGHWAYS

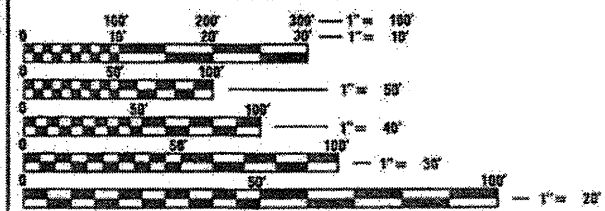
# CITY OF ROCKFORD PLANS FOR PROPOSED FEDERAL AID HIGHWAY

**MUNICIPAL STREET 3634  
REED AVENUE  
OVER THE SOUTHEAST DRAINAGEWAY  
SECTION 09-00558-00-BR  
CULVERT REHABILITATION  
PROJECT NO. BHM-5099 (082)  
EXIST. S.N. 101-6083  
WINNEBAGO COUNTY  
C-92-098-09**

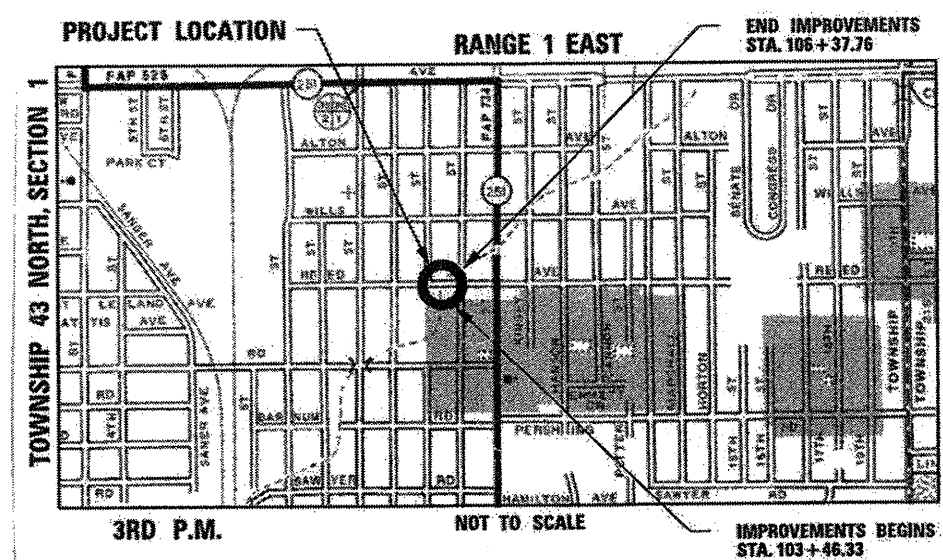


LOCATION OF SECTION INDICATED THUS: -

**STRUCTURE INFORMATION:**  
EXISTING SN: 101-6083;  
THE EXISTING STRUCTURE BUILT IN 1967 CONSISTS OF A THREE CELL 10'x6' REINFORCED CONCRETE BOX CULVERT WITH AN OUT-TO-OUT OF HEADWALL WIDTH OF 44'-8 3/4" AND A TOTAL LENGTH OF 33'-7 1/4" ALONG THE CENTERLINE OF THE ROADWAY. THE STRUCTURE HAS A 12" 57' AHEAD LEFT SKEW. TOP SLAB TO BE REMOVED AS SHOWN.  
PROPOSED WORK INCLUDES PLACING A NEW REINFORCED CONCRETE TOP SLAB AS SHOWN.



FULL SIZE PLANS HAVE BEEN PREPARED USING STANDARD ENGINEERING SCALES. REDUCED SIZED PLANS WILL NOT CONFORM TO STANDARD SCALES. IN MAKING MEASUREMENTS ON REDUCED PLANS, THE ABOVE SCALES MAY BE USED.



**FUNCTIONAL CLASSIFICATION**  
LOCAL ROAD (URBAN)

**DESIGN SPEED**  
REED AVENUE: 25 MPH

**SPEED LIMIT**  
REED AVENUE: 25 MPH

**TRAFFIC DATA:**  
REED AVENUE:  
ADT=622 (2012)  
ADT=731 (2032)  
1% TRUCKS

**ROCKFORD TOWNSHIP**  
GROSS LENGTH OF IMPROVEMENT = 291.43 FT. = 0.055 MILES  
NET LENGTH OF IMPROVEMENT = 291.43 FT. = 0.055 MILES

**PRINTED BY THE AUTHORITY  
OF THE STATE OF ILLINOIS**

**CITY OF ROCKFORD**

APPROVED: *[Signature]* 3/26/2012 (DATE)  
CITY OF ROCKFORD, CITY ENGINEER

PASSED: *[Signature]* (DATE)  
DISTRICT 2 ENGINEER OF LOCAL ROADS & STREETS

RELEASING FOR BID  
BASED ON LIMITED  
REVIEW: *[Signature]* (DATE)  
DEPUTY DIRECTOR OF HIGHWAYS, REGION 2 ENGINEER

FEDERAL AID DESIGN ENGINEER: LAURA CONNOLLY (815) 204-2271

**HRGreen**  
1330 E. STATE STREET, SUITE 4 | ROCKFORD, ILLINOIS 61104  
Phone: 815.998.7998 | Toll Free: 800.728.7805 | Fax: 815.998.9256 | HRGreen.com  
ILLINOIS PROFESSIONAL DESIGN FIRM #184-001322

**PROJECT ENGINEER: KEVIN M. ARFT, P.E.**  
**PROJECT MANAGER: ROBERT G. DAVIES, S.E., P.E.**  
**CONTRACT NO. 85562**

**Call Before You Dig**  
**811**  
Simply Call 811

**STRUCTURAL ENGINEER'S SIGN & SEAL**

*[Signature]*  
ROBERT G. DAVIES, S.E., P.E.  
03/26/2012  
DATE  
11/30/2012  
EXPIRES

**HRGreen**  
STATE OF ILLINOIS  
REGISTERED PROFESSIONAL ENGINEER  
081-004666

**PROFESSIONAL ENGINEER'S SIGN & SEAL**

*[Signature]*  
KEVIN M. ARFT, P.E.  
03/26/2012  
DATE  
11/30/2012  
EXPIRES

**HRGreen**  
STATE OF ILLINOIS  
REGISTERED PROFESSIONAL ENGINEER  
082-059077

**GENERAL NOTES**

- REMOVAL AND DISPOSAL OF UNSUITABLE MATERIAL, AND POROUS GRANULAR EMBANKMENT SUBGRADE HAS BEEN ADDED FOR USE IF UNSUITABLE MATERIAL IS ENCOUNTERED IN THE FIELD, AS DETERMINED BY THE ENGINEER. IF UNSUITABLE AND/OR UNSTABLE MATERIAL IS NOT ENCOUNTERED, THEN THE QUANTITY SHALL BE DEDUCTED AND NO COMPENSATION WILL BE DUE THE CONTRACTOR.
- FORTY EIGHT HOURS BEFORE STARTING EXCAVATION THE CONTRACTOR WILL CALL J.U.L.I.E. (1-800-892-0123) TO HAVE THE LOCATION OF EXISTING UTILITIES STAKED.
- THE CONTRACTOR SHALL CONTACT THE CITY OF ROCKFORD AT LEAST 72 HOURS IN ADVANCE OF BEGINNING ANY WORK ON REED AVENUE.
- THE CONTRACTOR WILL NOT BE ALLOWED TO SET UP A YARD OR FIELD OFFICE ON CITY PROPERTY WITHOUT WRITTEN PERMISSION FROM THE CITY OF ROCKFORD.
- PRIOR TO COMMENCEMENT OF CONSTRUCTION, THE CONTRACTOR SHALL VERIFY ALL DIMENSIONS AND CONDITIONS AFFECTING THEIR WORK WITH THE ACTUAL CONDITIONS AT THE JOB SITE. IN ADDITION, THE CONTRACTOR MUST VERIFY THE ENGINEER'S LINE AND GRADE STAKES. IF THERE ARE ANY DISCREPANCIES FROM WHAT IS SHOWN ON THE CONSTRUCTION PLANS, HE MUST IMMEDIATELY REPORT SAME TO THE ENGINEER BEFORE DOING ANY WORK, OTHERWISE THE CONTRACTOR ASSUMES FULL RESPONSIBILITY. IN THE EVENT OF DISAGREEMENT BETWEEN THE CONSTRUCTION PLANS, STANDARD SPECIFICATIONS AND/OR SPECIAL DETAILS, THE CONTRACTOR SHALL SECURE WRITTEN INSTRUCTIONS FROM THE ENGINEER PRIOR TO PROCEEDING WITH ANY PART OF THE WORK AFFECTED BY OMISSIONS OR DISCREPANCIES. FAILING TO SECURE SUCH INSTRUCTIONS, THE CONTRACTOR WILL BE CONSIDERED TO HAVE PROCEEDED AT HIS OWN RISK AND EXPENSE. IN THE EVENT OF ANY DOUBT OR QUESTION ARISING WITH RESPECT TO THE TRUE MEANING OF THE CONSTRUCTION PLANS OR SPECIFICATIONS, THE DECISION OF THE ENGINEER SHALL BE FINAL AND CONCLUSIVE.
- THE CONTRACTOR SHALL PROVIDE ACCESS TO ALL ADJUTING PROPERTY AT ALL TIMES DURING THE CONSTRUCTION OF THIS PROJECT, EXCEPT FOR PERIODS OF SHORT DURATION AS DETERMINED BY THE ENGINEER.
- EXCEPT AS NOTED ON THE PLANS, PAVEMENT GRADES SHOWN ARE AT THE TOP OF PAVEMENT SURFACES.
- OFFSET LOCATIONS GIVEN IN THE PLANS FOR STRUCTURES, EDGE OF PAVEMENT, ETC. ARE FROM THE ROADWAY CENTERLINE UNLESS NOTED OTHERWISE.
- ALL ELEVATIONS REFERRING TO U.S.G.S. MEAN SEA LEVEL DATUM.

10. THE LOCATION OF EXISTING DRAINAGE STRUCTURES, STORM SEWERS, WATER MAINS, SANITARY SEWERS, AND ANY OTHER PUBLIC OR PRIVATE UTILITIES AS SHOWN ON THE PLANS IS APPROXIMATE AND THEIR EXACT LOCATION IS TO BE DETERMINED IN THE FIELD BY THE CONTRACTOR. THIS WORK SHALL BE CONSIDERED AS INCLUDED IN THE UNIT BID PRICES OF THE CONTRACT, AND NO ADDITIONAL COMPENSATION WILL BE ALLOWED.

11. THE CONTRACTOR SHALL BE RESPONSIBLE FOR THE PROTECTION OF ALL UNDERGROUND AND SURFACE UTILITIES EVEN THOUGH THEY MIGHT NOT BE SHOWN ON THE PLANS. ANY UTILITY PROPERTY DAMAGED DURING CONSTRUCTION SHALL BE REPAIRED OR REPLACED TO THE SATISFACTION OF THE OWNER AT THE CONTRACTOR'S EXPENSE.

12. ANY LOOSE MATERIAL DEPOSITED IN THE FLOWLINES OF DRAINAGE STRUCTURES WHICH OBSTRUCT THE NATURAL FLOW OF WATER SHALL BE REMOVED AT THE CLOSE OF EACH WORKING DAY. PRIOR TO ACCEPTANCE OF THE IMPROVEMENT, ALL DRAINAGE STRUCTURES SHALL BE FREE OF DIRT AND DEBRIS. THIS WORK SHALL NOT BE PAID FOR SEPARATELY BUT SHALL BE CONSIDERED AS INCLUDED IN THE UNIT BID PRICES OF THE CONTRACT.

13. WHERE NEW WORK MEETS EXISTING FEATURES TO REMAIN, THE CONTRACTOR SHALL FIELD CHECK ALL DIMENSIONS AND ELEVATIONS PRIOR TO PROCEEDING WITH CONSTRUCTION AND NOTIFY THE ENGINEER IMMEDIATELY OF ANY DISCREPANCIES.

14. SEEDING WILL NOT BE PERMITTED AT ANY TIME WHEN THE GROUND IS FROZEN, WET, OR IN AN UNTILLABLE CONDITION. LOCATIONS TO BE SEEDDED WILL BE DETERMINED BY THE ENGINEER. SEE ARTICLE 250.06 OF THE STANDARD SPECIFICATIONS.

15. SAW CUTTING WILL BE REQUIRED FOR ALL REMOVAL ITEMS LISTED IN SECTION 440 OF THE STANDARD SPECIFICATIONS, SHOWN IN THE PLANS, AND AS DIRECTED BY THE ENGINEER. THE COST OF SAW CUTTING WILL BE INCLUDED IN CONTRACT UNIT BID PRICES FOR THE ITEMS BEING REMOVED.

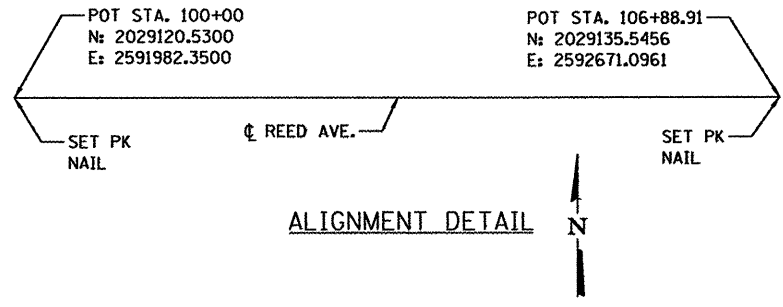
16. THE ENGINEER WILL BE THE SOLE JUDGE CONCERNING CURING TIME FOR THE VARIOUS HMA LIFTS.

17. INCIDENTAL GRADING, EARTHWORK AND SHAPING FOR PROPOSED SIDEWALK AND RESTORATION SHALL BE INCLUDED IN THE COST OF THE ASSOCIATED PAY ITEMS.

18. SHORT TERM PAVEMENT MARKING HAS BEEN ADDED FOR USE IF NEEDED TO MAINTAIN TRAFFIC CONTROL, AS DETERMINED BY THE ENGINEER. IF THIS IS NOT REQUIRED TO MAINTAIN TRAFFIC CONTROL, THEN THE QUANTITY SHALL BE DEDUCTED AND NO COMPENSATION WILL BE DUE THE CONTRACTOR.

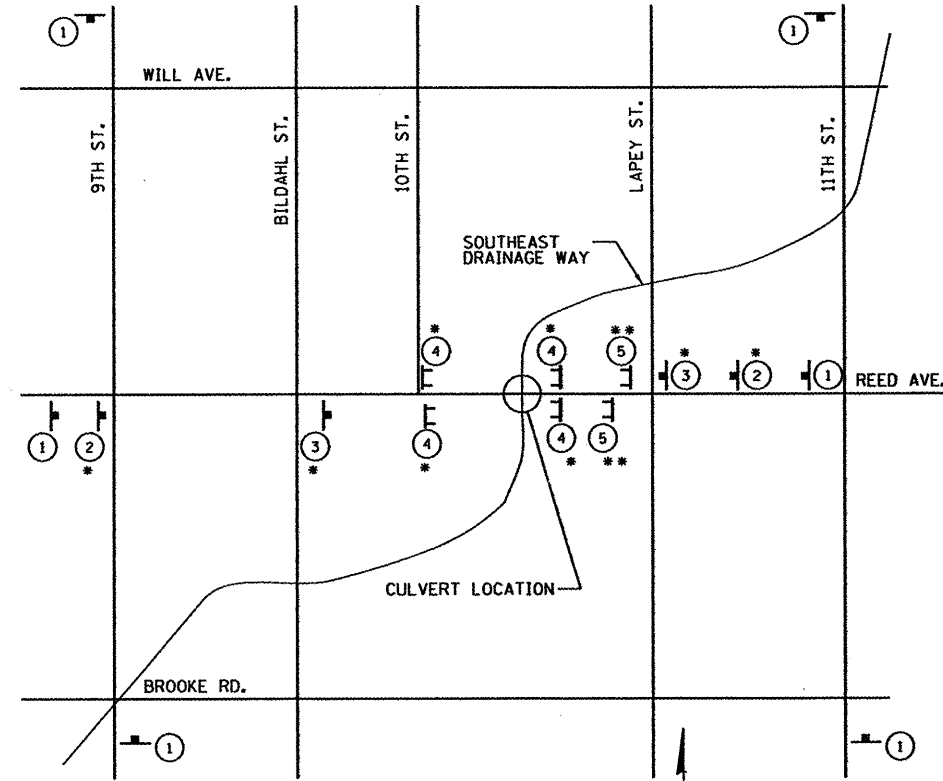
**SYMBOL LEGEND**

	EXISTING	PROPOSED
SANITARY MANHOLE	⊙	⊙
STORM MANHOLE	⊙	⊙
STORM CATCH BASIN	○	○
INLET	□	□
FLARED END SECTION	▷	▷
VALVE VAULT	⊙	⊙
FIRE HYDRANT	▽	▽
LIGHT POLE	*	*
STREET SIGN	+	+
REGULATORY SIGN	+	+
UTILITY POLE	○	○
UTILITY BOX	⊙	⊙
MAILBOX	⊙	⊙
WELL	⊙	⊙
SANITARY SEWER	—	—
STORM SEWER	—	—
CULVERT	—	—
WATER MAIN	—	—
WATER MAIN ENCASEMENT	—	—
STORM UNDERDRAIN	—	—
ELECTRIC LINE	—	—
TELEPHONE LINE	—	—
GAS LINE	—	—
CABLE TV LINE	—	—
TREELINE	—	—
TREE	⊙	⊙
FENCE	—	—
EROSION CONTROL FENCE	—	—
DITCH CHECK	—	—
DRAINAGE ARROW	→	→
100 YEAR OVERFLOW	—	—



**UTILITY CONTACTS**

CITY OF ROCKFORD WATER DIVISION	GREG CASSARO	(815) 987-3084
ROCK RIVER WATER RECLAMATION DISTRICT	DANA L. CARROL	(815) 387-7663
COMCAST	DONNA ZIES	(815) 395-8977
COMED	MIKE LENOX	(815) 490-2869
AT&T	DAVID SAINT GERMAIN	(815) 394-7297
NICOR	SCOTT PUFFER	(815) 455-0271



- REED AVENUE CLOSED AT BRIDGE (DATE) USE ALTERNATE ROUTE INFO (60"x30") BLACK MUTCD SERIES B 2000 LETTERING ON ORANGE SIGN PANEL
- ROAD CLOSED AHEAD W20-3 (48"x48") WITH FLASHING AMBER LIGHT
- ROAD CLOSED 500FT W20-3 (48"x48") WITH FLASHING AMBER LIGHT
- ROAD CLOSED TO THRU TRAFFIC R11-2 (48"x30") WITH 2 FLASHING AMBER LIGHTS PROVIDE SIGN ON RIGHT BARRICADE ONLY
- ROAD CLOSED TO THRU TRAFFIC R11-4 (48"x30") WITH 2 FLASHING AMBER LIGHTS PROVIDE SIGN ON RIGHT BARRICADE ONLY

**STANDARD ABBREVIATIONS**

B.C.	-	BACK OF CURB
B.O.C.	-	BACK OF CURB
B.S.L.	-	BUILDING SETBACK LINE
C.B.	-	STORM CATCH BASIN
C.E.	-	COMMONWEALTH EDISON CO.
D.E.	-	DRAINAGE EASEMENT
E-E	-	EDGE TO EDGE OF PAVEMENT
E.O.P.	-	EDGE OF PAVEMENT
E.O.S.	-	EDGE OF SHOULDER
EX	-	EXISTING
F.E.S.	-	FLARED END SECTION
I.B.T.	-	ILLINOIS BELL TELEPHONE CO.
L.E.	-	LANDSCAPE EASEMENT
M.H.	-	MANHOLE (TYPE SPECIFIED ON PLANS)
PR	-	PROPOSED
R.O.W	-	RIGHT OF WAY
SHLD	-	SHOULDER
T.B.F.	-	TRENCH BACKFILL
T.C.	-	TOP OF CURB
T.C.E.	-	TEMPORARY CONSTRUCTION EASEMENT
T.O.B.	-	TOP OF BERM
T.O.C.	-	TOP OF CURB
U.E.	-	UTILITY EASEMENT

COMPANY NAME: Revit 14. Ar-ff  
PROJECT CONTACT: City of Rockford  
CLIENT: City of Rockford  
DATE PLOTTED: 3/23/2012 10:00 AM  
PLOT DRIVER: standard-trans.tbl  
PEN TABLE:

**HRGreen**  
HRGreen.com  
Multiple Professional Design Firm  
#194-00122

USER NAME = whood	DESIGNED - KMA	REVISED -
FILE NAME = 86180434-GEN.dgn	DRAWN - WJH	REVISED -
PLOT SCALE =	CHECKED - RGD	REVISED -
PLOT DATE = 3/23/2012	DATE - 3/26/12	REVISED -

**CITY OF ROCKFORD**

**REED AVENUE OVER SOUTHEAST DRAINAGEWAY**  
**GENERAL NOTES AND ROAD CLOSURE DETAIL**

SCALE: SHEET NO. OF SHEETS STA. TO STA.

M.S.	SECTION	COUNTY	TOTAL SHEETS	SHEET NO.
3634	09-00558-00-BR	WINNEBAGO	16	2
CONTRACT NO. 85562				
FED. ROAD DIST. NO. 2 ILLINOIS FED. AID PROJECT				

SUMMARY OF QUANTITIES			URBAN	CONSTRUCTION TYPE CODE
PAY ITEM NUMBER	PAY ITEMS	UNITS	TOTAL QUANTITY	0014
▲ 20201200	REMOVAL AND DISPOSAL OF UNSUITABLE MATERIAL	CU YD	335.0	335.0
20800150	TRENCH BACKFILL	CU YD	12.0	12.0
21101615	TOPSOIL FURNISH AND PLACE, 4"	SQ YD	540	540
25000210	SEEDING, CLASS 2A	ACRE	0.2	0.2
25000400	NITROGEN FERTILIZER NUTRIENT	POUND	10	10
25000500	PHOSPHORUS FERTILIZER NUTRIENT	POUND	10	10
25000600	POTASSIUM FERTILIZER NUTRIENT	POUND	10	10
25100630	EROSION CONTROL BLANKET	SO YD	1,080	1,080
28000250	TEMPORARY EROSION CONTROL SEEDING	POUND	15	15
28000400	PERIMETER EROSION BARRIER	FOOT	465	465
28000500	INLET AND PIPE PROTECTION	EACH	8	8
31101200	SUB-BASE GRANULAR MATERIAL, TYPE B 4"	SO YD	1,000	1,000
35100700	AGGREGATE BASE COURSE, TYPE A 8"	SO YD	800	800
40600100	BITUMINOUS MATERIALS (PRIME COAT)	GALLON	160	160
▲ 40603000	HOT-MIX ASPHALT BINDER COURSE, IL-12.5, N50	TON	115	115
▲ 40603310	HOT-MIX ASPHALT SURFACE COURSE, MIX "C", N50	TON	70	70
42400200	PORTLAND CEMENT CONCRETE SIDEWALK 5 INCH	SQ FT	3,540	3,540
42400800	DETECTABLE WARNINGS	SQ FT	45	45
44000100	PAVEMENT REMOVAL	SO YD	955	955
44000200	DRIVEWAY PAVEMENT REMOVAL	SO YD	100	100
44000500	COMBINATION CURB AND GUTTER REMOVAL	FOOT	64	64
50102400	CONCRETE REMOVAL	CU YD	42.3	42.3
50200100	STRUCTURE EXCAVATION	CU YD	29.8	29.8
50300300	PROTECTIVE COAT	SO YD	45	45
50800105	REINFORCEMENT BARS	POUND	12,780	12,780
50800205	REINFORCEMENT BARS, EPOXY COATED	POUND	1,580	1,580
* 50901750	PARAPET RAILING	FOOT	79	79
51500100	NAME PLATES	EACH	1	1
54003000	CONCRETE BOX CULVERTS	CU YD	56.9	56.9
550A0050	STORM SEWERS, CLASS A, TYE 1 12"	FOOT	30	30
550A0090	STORM SEWERS, CLASS A, TYE 1 18"	FOOT	80	80
55100700	STORM SEWER REMOVAL 15"	FOOT	25	25
55100900	STORM SEWER REMOVAL 18"	FOOT	45	45
60200305	CATCH BASINS, TYPE A, 4'-DIAMETER, TYPE 3 FRAME AND GRATE	EACH	2	2
60218400	MANHOLES, TYPE A, 4'-DIAMETER, TYPE 1 FRAME, CLOSED LID	EACH	4	4
60235700	INLETS, TYPE A, TYPE 3 FRAME AND GRATE	EACH	2	2
60300105	FRAMES AND GRATES TO BE ADJUSTED	EACH	1	1
▲ 60300305	FRAMES AND LIDS TO BE ADJUSTED	EACH	4	4
60500060	REMOVING INLETS	EACH	4	4
60604400	COMBINATION CONCRETE CURB AND GUTTER, TYPE B - 6.18	FOOT	580	580
63200310	GUARDRAIL REMOVAL	FOOT	45	45
67000400	ENGINEER'S FIELD OFFICE, TYPE A	CAL MO	3	3
67100100	MOBILIZATION	L SUM	1	1
▲ 70300100	SHORT TERM PAVEMENT MARKING	FOOT	695	695

SUMMARY OF QUANTITIES			URBAN	CONSTRUCTION TYPE CODE
PAY ITEM NUMBER	PAY ITEMS	UNITS	TOTAL QUANTITY	0014
* 78000200	THERMOPLASTIC PAVEMENT MARKING - LINE 4"	FOOT	585	585
* 78000400	THERMOPLASTIC PAVEMENT MARKING - LINE 6"	FOOT	110	110
▲ X2070304	POROUS GRANULAR EMBANKMENT, SPECIAL	CU YD	50.0	50.0
▲ X4021000	TEMPORARY ACCESS (PRIVATE ENTRANCE)	EACH	3	3
▲ X7010216	TRAFFIC CONTROL AND PROTECTION, SPECIAL	L SUM	1	1
▲ Z0004522	HOT-MIX ASPHALT DRIVEWAY PAVEMENT, 6"	SQ YD	60	60
▲ Z0012754	STRUCTURAL REPAIR OF CONCRETE (DEPTH EQUAL TO OR LESS THAN 5 INCHES)	SO FT	55	55
▲ Z0013798	CONSTRUCTION LAYOUT	L SUM	1	1
▲ Z0042002	POROUS GRANULAR EMBANKMENT, SUBGRADE	CU YD	335.0	335.0

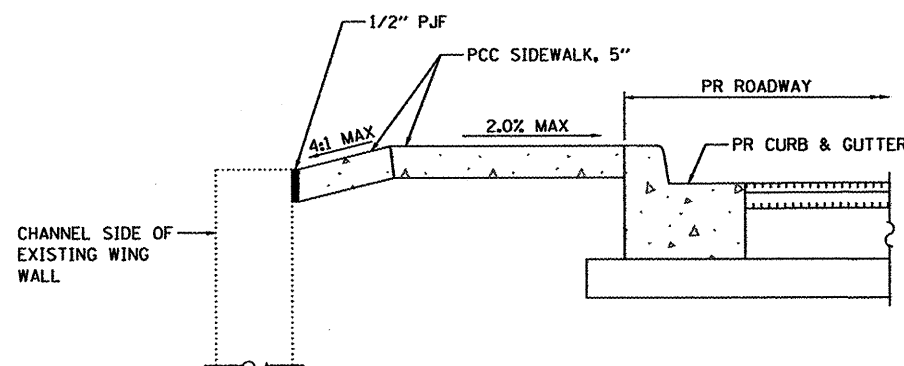
\*SPECIALTY ITEM  
▲ SPECIAL PROVISION PROVIDED

### STORM SEWER TAGS

- 1 INLET TA T3 F&G  
STA. 104+01.56, 12' LT  
RIM = 720.83  
INV. = 718.83 S
- 2 25 LIN FT SS CL A 1 12" @ 3.33%
- 3 CB TA 4' DOA T3 F&G  
STA/ 104+01.56, 12' RT  
RIM = 720.83  
INV. = 718.00 N  
INV. = 717.50 S
- 4 5 LIN FT SS CL A 1 12" @ 2.00%
- 5 MH TA 4' DIA TIF CL  
INSTALL IN EXISTING 18" RCP STORM SEWER RUN  
STA. 104+01.56, 18.83' RT  
RIM = 721.29  
INV. = 717.40 N  
INV. = 717.09 W EX 18" RCP  
INV. = 717.09 E EX 18" RCP  
COST TO REMOVE PORTIONS OF EXISTING 18" RCP STORM SEWER AND RE-INSTALL PIPE SECTIONS AT PROPOSED MANHOLE INVERTS ARE INCLUDED IN THE COST OF THE MANHOLE
- 6 MH TA 4' DIA TIF CL  
INSTALL IN EXISTING 15" AND 18" RCP STORM SEWER RUN  
STA. 103+67.48, 19.13' RT  
RIM = 721.39  
INV. = 717.36 N EX 15" RCP  
INV. = 717.36 E EX 18" RCP  
COST TO RE-INSTALL PIPE SECTIONS AT PROPOSED MANHOLE INVERTS ARE INCLUDED IN THE COST OF THE MANHOLE.
- 7 INLET TA T3 F&G  
STA. 105+70.25, 12' LT  
RIM = 720.40  
INV. = 717.86 S
- 8 25 LIN FT SS CL A 1 18" @ 0.20%
- 9 CB TA 4' DIA T3 F&G  
STA. 105+70.25, 12' RT  
RIM = 720.34  
INV. = 717.81 N  
INV. = 717.81 S
- 10 5 LIN FT SS CL A 1 18" @ 0.20%
- 11 MH TA 4' DIA TIF CL  
STA. 105+70.25, 20.78' RT  
RIM = 720.79  
INV. = 717.80 N  
INV. = 717.80 W
- 12 47 LIN FT SS CL A 1 18" @ 0.29%
- 13 MH TA 4' DIA TIF CL  
STA. 105+18.63, 20.78' RT  
RIM = 720.05  
INV. = 717.66 E  
INV. = 717.66 W EX 18" RCP  
COST TO RE-INSTALL EXISTING PIPE SECTION AT MANHOLE INVERT IS INCLUDED IN THE COST OF THE MANHOLE.
- F FRAMES AND LIDS TO BE ADJUSTED
- G FRAMES AND GRATES TO BE ADJUSTED

### SANITARY SEWER TAGS

- F1 EX SAN MH 005-101 FRAMES AND LIDS TO BE ADJUSTED\* 2" DOWN
  - F2 EX SAN MH 005-040 FRAMES AND LIDS TO BE ADJUSTED\* 2" DOWN
- \* THE CONTRACTOR SHALL CONTACT JUDE TORRE, CHIEF CONSTRUCTION INSPECTOR WITH THE ROCK RIVER WATER RECLAMATION DISTRICT AT 815-871-8072 AT LEAST 48 HOURS IN ADVANCE WHEN MANHOLE ADJUSTMENTS ARE TO BE MADE. SEE SPECIAL PROVISIONS FOR ADDITIONAL REQUIREMENTS.



CORNER SIDEWALK DETAIL  
CROSS SECTION

COMPANY NAME: HRGreen.com  
PROJECT CONTACT: Kevin M. Artt  
CLIENT: City of Rockford  
DATE PLOTTED: 3/23/2012 1:42:10 PM  
FILE NAME: 86100434-500.dgn  
PLOT DRIVER: pdfplot  
PEN TABLE: standard-trans.tbl



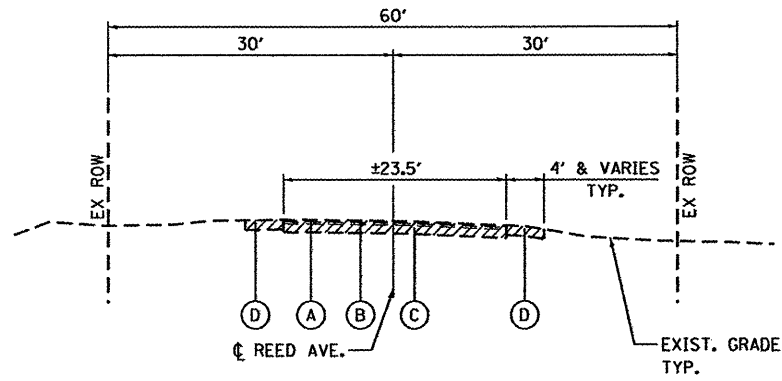
USER NAME = whood	DESIGNED - KMA	REVISED -
FILE NAME = 86100434-500.dgn	DRAWN - WJH	REVISED -
PLOT SCALE =	CHECKED - RGD	REVISED -
PLOT DATE = 3/23/2012	DATE - 3/26/12	REVISED -

CITY OF ROCKFORD

REED AVENUE OVER SOUTHEAST DRAINAGEWAY  
SUMMARY OF QUANTITIES

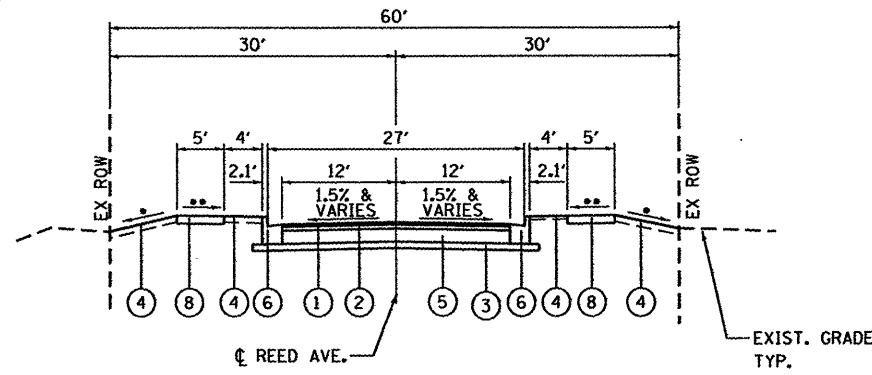
SCALE:	SHEET NO. OF SHEETS	STA. TO STA.
--------	---------------------	--------------

M.S.	SECTION	COUNTY	TOTAL SHEETS	SHEET NO.
3634	09-00558-00-BR	WINNEBAGO	16	3
CONTRACT NO. 85562				
FED. ROAD DIST. NO. 2   ILLINOIS   FED. AID PROJECT				



**EXISTING APPROACH ROADWAY  
TYPICAL SECTION**

STA. 103+46.33 TO STA. 104+42.02  
STA. 104+75.66 TO STA. 106+37.76



**PROPOSED APPROACH ROADWAY  
TYPICAL SECTION**

STA. 103+46.33 TO STA. 104+42.02  
STA. 104+75.66 TO STA. 106+37.76

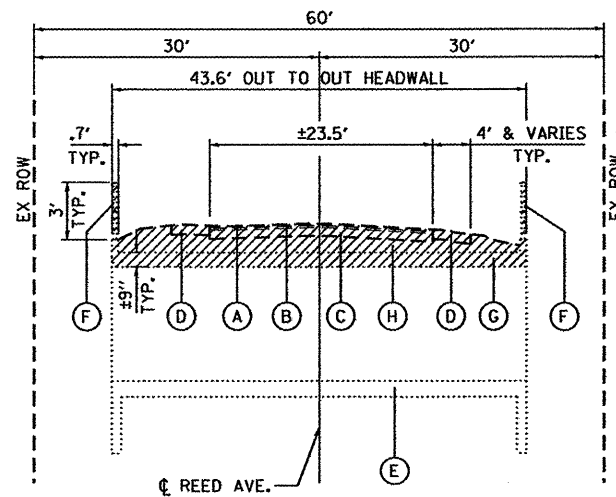
- 3:1 & VARIES
- \*\* 2.0% MAX.

**NOTES**

- I. SEE CROSS SECTIONS FOR ADDITIONAL INFORMATION.
- II. SEE STRIPING, EROSION CONTROL & RESTORATION PLAN FOR LIMITS
- III. SUBBASE GRANULAR MATERIAL, TYPE B4 AND AGGREGATE BASE COURSE, TYPE A 8" OVER THE CULVERT SHALL CONFORM TO SECTIONS 311 AND 351 RESPECTIVELY, EXCEPT THAT COMPACTION SHALL BE ACHIEVED WITH A LIGHT WEIGHT MECHANICAL TAMPER, ROLLER OR VIBRATORY SYSTEM TO THE SATISFACTION OF THE ENGINEER.

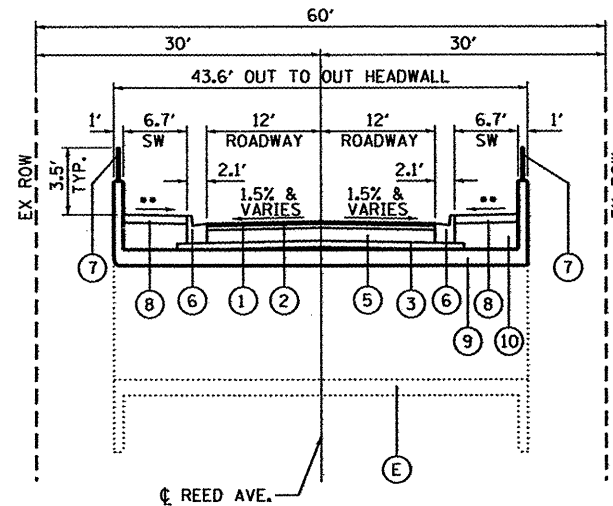
**EXISTING LEGEND**

- (A) EX HMA SURFACE (THICKNESS VARIES ± 1/4")
- (B) EX HMA BINDER (THICKNESS VARIES ± 1/4")
- (C) EX AGGREGATE BASE (± 5" THICK)
- (D) EX AGGREGATE AND GRASS SHOULDER - REMOVAL COST INCLUDED IN "PAVEMENT REMOVAL"
- (E) EX TRIPLE CELL 10' X 6' CAST IN PLACE REINFORCED CONCRETE BOX CULVERT
- (F) EX STEEL RAILING TO BE REMOVED (COST FOR REMOVAL INCLUDED IN "CONCRETE REMOVAL")
- (G) EX CULVERT TOP SLAB TO BE REMOVED. PAID FOR AS "CONCRETE REMOVAL."
- (H) EX FILL ON CULVERT - REMOVAL COST INCLUDED IN "PAVEMENT REMOVAL"



**EXISTING ROADWAY  
TYPICAL SECTION AT CULVERT**

STA. 104+42.02 TO STA. 104+75.66



**PROPOSED ROADWAY  
TYPICAL SECTION AT CULVERT**

STA. 104+42.02 TO STA. 104+75.66

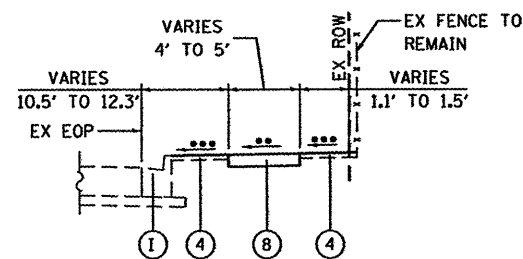
- \*\* 2.0% MAX.

**PROPOSED LEGEND**

- (1) HOT-MIX ASPHALT SURFACE COURSE MIX "C" N50 @ 1 1/2"
- (2) HOT-MIX ASPHALT BINDER COURSE IL - 12.5, N50 @ 2 1/2"
- (3) SUBBASE GRANULAR MATERIAL, TYPE B 4" (NOTE III)
- (4) TOPSOIL FURNISH & PLACE 4" WITH SEEDING CLASS 2A (NOTE II)
- (5) AGGREGATE BASE COURSE, TYPE A 8"
- (6) COMBINATION CONCRETE CURB AND GUTTER, TYPE B-6.18
- (7) PARAPET RAILING
- (8) PORTLAND CEMENT CONCRETE SIDEWALK, 5"
- (9) PR. CULVERT TOP SLAB AND PARAPETS PAID FOR AS "CONCRETE BOX CULVERTS"
- (10) POROUS GRANULAR EMBANKMENT, SPECIAL

INDICATES ITEMS TO BE REMOVED

HOT-MIX ASPHALT MIXTURE REQUIREMENTS		
MIXTURE USE	SURFACE	BINDER
PGs	PG 64-22	PG 64-22
DESIGN AIR VOIDS	3.0 @ N50	3.0 @ N50
MIXTURE COMPOSITION (GRADIATION MIXTURE)	IL 9.5 OR 12.5	IL 9.5 OR 12.5
FRICTION AGGREGATE	C	N/A
20 YEAR ESAL	0.0	0.0
MIX UNIT WEIGHT	112 LBS/SY/IN	



**PROPOSED TYPICAL SECTION  
AT SIDEWALK - 10TH STREET**

(LOOKING NORTH)  
\*\* 2.0% MAX.  
\*\*\* MATCH EXISTING (±)

COMPANY NAME: Kevin W. Jett  
 PROJECT CONTACT: City of Rockford  
 CLIENT: 3/23/2012 1:40:14 PM  
 DATE PLOTTED: 86100434-TYP.dgn  
 FILE NAME: pof.dgn  
 PLOT DRIVER: pof.dgn  
 PEN TABLE: sfender@transit.tn



USER NAME = whood	DESIGNED - KMA	REVISED -
FILE NAME = 86100434-TYP.dgn	DRAWN - WJH	REVISED -
PLOT SCALE = 1"=10'	CHECKED - RGD	REVISED -
PLOT DATE = 3/23/2012	DATE - 3/26/12	REVISED -

CITY OF ROCKFORD

REED AVENUE OVER SOUTHEAST DRAINAGEWAY  
TYPICAL SECTIONS

SCALE: 1"=10' SHEET NO. OF SHEETS STA. TO STA.

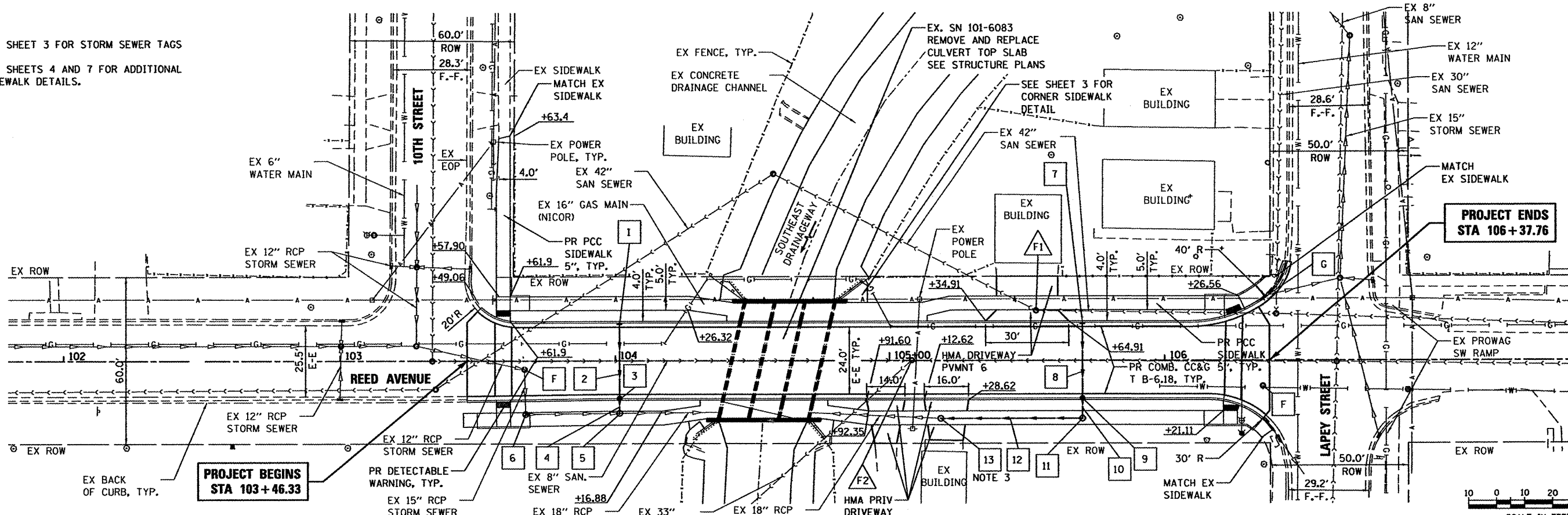
M.S.	SECTION	COUNTY	TOTAL SHEETS	SHEET NO.
3634	09-00558-00-BR	WINNEBAGO	16	4
CONTRACT NO. 85562				
FED. ROAD DIST. NO. 2 ILLINOIS FED. AID PROJECT				





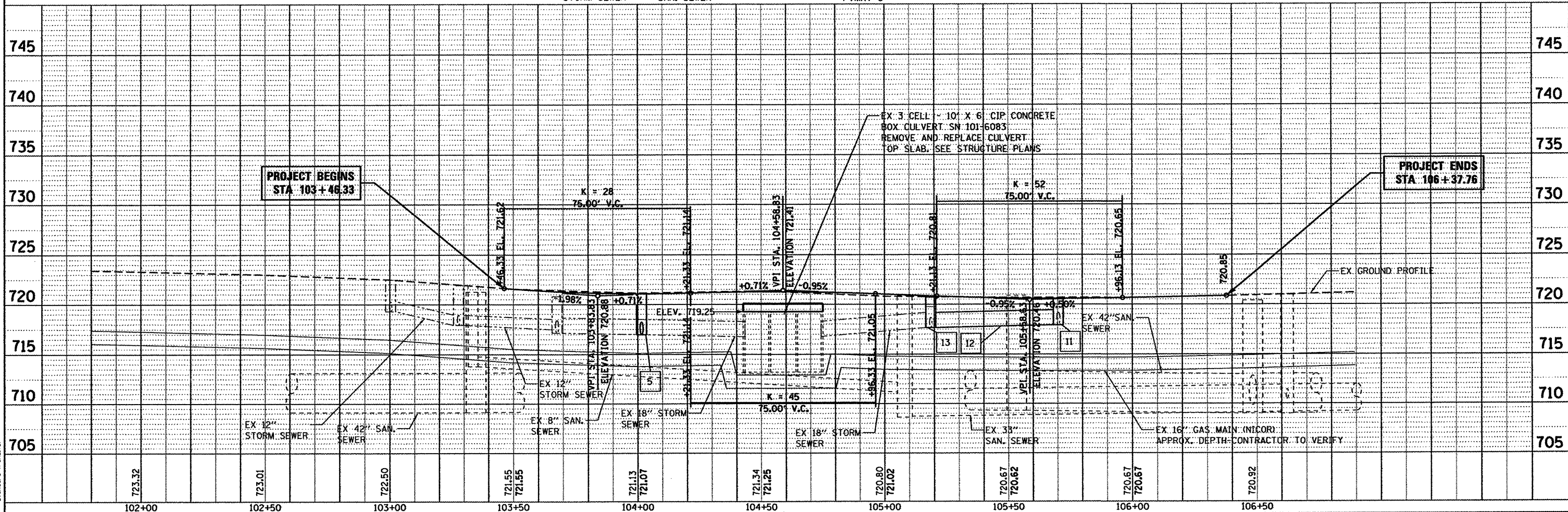
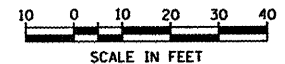
NOTES:

- SEE SHEET 3 FOR STORM SEWER TAGS
- SEE SHEETS 4 AND 7 FOR ADDITIONAL SIDEWALK DETAILS.



PROJECT BEGINS  
STA 103+46.33

PROJECT ENDS  
STA 106+37.76



PROJECT BEGINS  
STA 103+46.33

PROJECT ENDS  
STA 106+37.76

COMPANY NAME: HRGreen.com  
PROJECT CONTACT: Kevin M. Artt  
CLIENT: City of Rockford  
DATE PLOTTED: 3/26/2012 10:54:11 PM  
FILE NAME: 86108434-ppp01.dgn  
PLOT SCALE: 1"=20'  
PLOT DATE: 3/26/2012

USER NAME =	DESIGNED -	REVISED -
FILE NAME = 86108434-ppp01.dgn	DRAWN - WJH	REVISED -
PLOT SCALE = 1"=20'	CHECKED - RGD	REVISED -
PLOT DATE = 3/26/2012	DATE - 3/26/12	REVISED -

**CITY OF ROCKFORD**

**REED AVENUE OVER THE SOUTHEAST DRAINAGEWAY  
PLAN AND PROFILE**




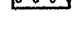

SCALE: 1"=20' SHEET NO. 1 OF 1 SHEETS STA. 102+00 TO STA. 106+88.91

M.S.	SECTION	COUNTY	TOTAL SHEETS	SHEET NO.
3634	09-00558-00-BR	WINNEBAGO	16	6
CONTRACT NO. 85562				
FED. ROAD DIST. NO. 2 [ILLINOIS] FED. AID PROJECT				

**EROSION CONTROL NOTES**

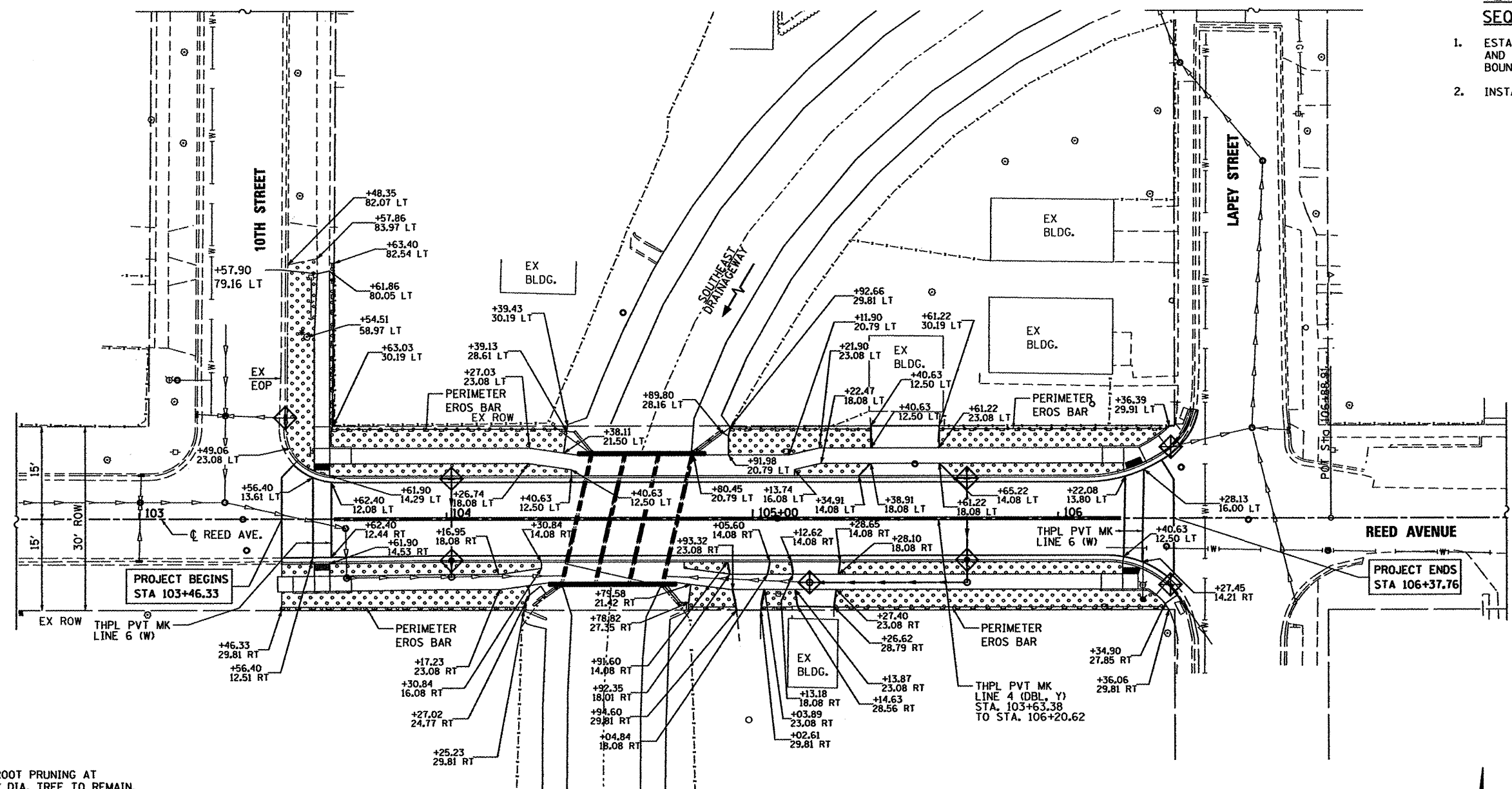
1. THE CONTRACTOR WILL BE REQUIRED TO IMPLEMENT AND MAINTAIN EROSION CONTROL MEASURES IMMEDIATELY AFTER STRIPPING OF EXISTING VEGETATION.
2. STOCKPILES OF SOIL AND OTHER BUILDING MATERIALS TO REMAIN IN PLACE MORE THAN THREE (3) DAYS SHALL BE FURNISHED WITH EROSION AND SEDIMENT CONTROL MEASURES (I.E. PERIMETER SILT FENCE). STOCKPILES TO REMAIN IN PLACE FOR 14 DAYS OR MORE SHALL RECEIVE TEMPORARY SEEDING.
3. THE CONTRACTOR SHALL TAKE ALL PRECAUTIONS TO PREVENT POLLUTION OF STORM WATER AND SHALL FOLLOW IEPA REGULATIONS & IDOT CONSTRUCTION MEMORANDUM NO. 06-60.
4. STABILIZATION MEASURES SHALL BE INITIATED WITHIN 7 DAYS OF CONSTRUCTION ACTIVITY TEMPORARILY OR PERMANENTLY CEASING IN AREAS WHERE IT WILL NOT OCCUR FOR A PERIOD OF 14 OR MORE CALENDAR DAYS.
5. THE SOIL EROSION AND SEDIMENT CONTROL PRACTICES WILL BE INSPECTED WEEKLY AND AFTER 1/2 INCH OF RAIN OR MORE BY THE INDIVIDUAL ON SITE IN CHARGE OF SOIL EROSION AND SEDIMENT CONTROL DURING THE CONSTRUCTION OF THE PROJECT.
6. SILT FENCE SHALL BE INSTALLED FOLLOWING THE COMPLETION AND STABILIZATION OF THE STORMWATER FACILITIES AND WILL REMAIN IN PLACE UNTIL THE CONTRIBUTING AREA IS STABILIZED.
7. ALL ADJACENT STREETS MUST BE KEPT CLEAR OF DEBRIS. INSPECTED DAILY AND CLEANED WHEN NECESSARY OR AS DIRECTED BY THE ENGINEER.
8. ALL SOIL EROSION AND SEDIMENT CONTROL PRACTICES ARE REFERENCED FROM THE ILLINOIS URBAN MANUAL.
9. THE CONTRACTOR WILL BE REQUIRED TO HAVE A DESIGNATED WASHOUT AREA DURING ALL CONCRETE POURS.

**LEGEND**

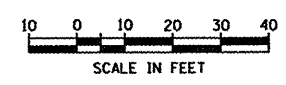
	PERIMETER EROSION BARRIER		FINAL RESTORATION OF DISTURBED AREAS - TOPSOIL FURNISH AND PLACE, 4"
	EXISTING R.O.W.		- SEEDING CLASS 2A - EROSION CONTROL BLANKET
			INLET AND PIPE PROTECTION

**TEMPORARY EROSION CONTROL SEQUENCE OF CONSTRUCTION**

1. ESTABLISH TEMPORARY EROSION CONTROL MEASURES AND ERECT PERIMETER EROSION BARRIER ALONG SITE BOUNDARIES PRIOR TO EARTHWORK.
2. INSTALL TEMPORARY EROSION CONTROL SEEDING.



\* TREE ROOT PRUNING AT EX 20" DIA. TREE TO REMAIN. THIS WORK SHALL BE DONE IN ACCORDANCE WITH THE APPLICABLE PORTIONS OF SECTION 201 OF THE STANDARD SPECIFICATION AND AS DIRECTED BY THE ENGINEER. THE COST SHALL BE INCLUDED IN THE COST OF "PCC SIDEWALK 5".



SEE SHEET 13 FOR ADDITIONAL INFORMATION AT SIDEWALK RAMPS

COMPANY NAME: Kevin M. Jeff  
 PROJECT CONTACT: 3175  
 DATE PLOTTED: 3/23/2012  
 PLOT NAME: 86100434-Eros.dgn  
 PLOT DRIVER: pefahf  
 PEN TABLE: standard-trans.tbl



USER NAME = whood	DESIGNED - KMA	REVISED -
FILE NAME = 86100434-Eros.dgn	DRAWN - WJH	REVISED -
PLOT SCALE = 1"=20'	CHECKED - RGD	REVISED -
PLOT DATE = 3/23/2012	DATE - 3/26/12	REVISED -

**CITY OF ROCKFORD**

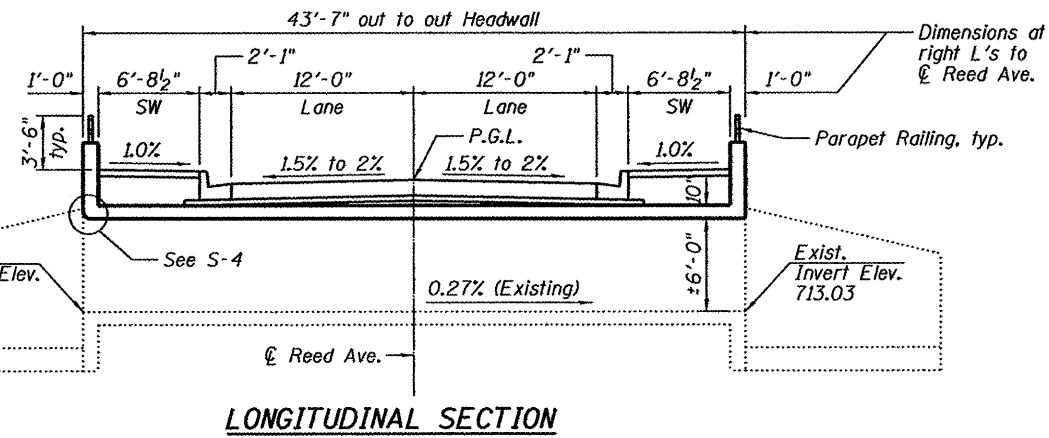
<b>REED AVENUE OVER SOUTHEAST DRAINAGEWAY EROSION CONTROL, PAVEMENT MARKING AND RESTORATION PLAN</b>			
SCALE: 1"=20'	SHEET NO. OF SHEETS	STA. TO STA.	

M.S.	SECTION	COUNTY	TOTAL SHEETS	SHEET NO.
3634	09-00558-00-BR	WINNEBAGO	16	7
CONTRACT NO. 85562				
FED. ROAD DIST. NO. 2 ILLINOIS FED. AID PROJECT				

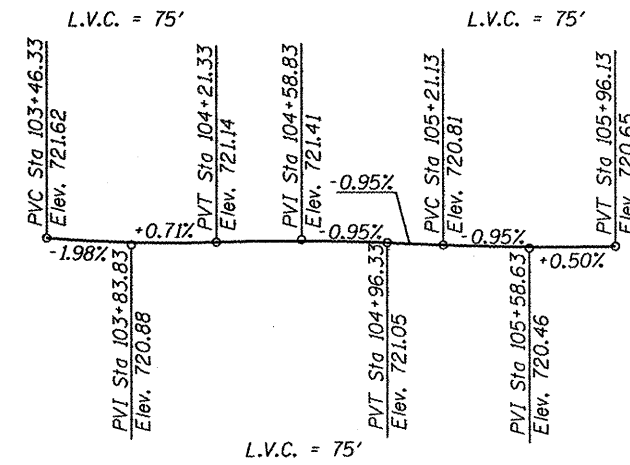
**Benchmark:**  
 Railroad spike in west face of the power pole located at the northeast corner of the Reed Avenue culvert over the Southeast Drainageway.  
 Elevation=722.44 NAVD88

**Existing SN: 101-6083**  
 The existing structure built in 1967 consists of a three cell 10'x6' reinforced concrete box culvert with an out to out headwall width of 44'-8 3/4" and a total length of 33'-7 1/4" along the centerline of the roadway. The structure has a 12° 57' ahead left skew. Top of slab to be removed and replaced. The existing sidewalls, divider walls, bottom slab and wingwalls are to remain. The work will be done under a temporary closure of Reed Ave.

**Salvage:** Existing side walls, divider walls, invert and wingwalls.



**LONGITUDINAL SECTION**



**PROFILE GRADE**

**REED AVENUE  
 RE-BUILT 20\_\_ BY  
 CITY OF ROCKFORD  
 SEC 09-00558-00-BR  
 STRUCTURE NO. 101-6083  
 LOADING HS20-44**

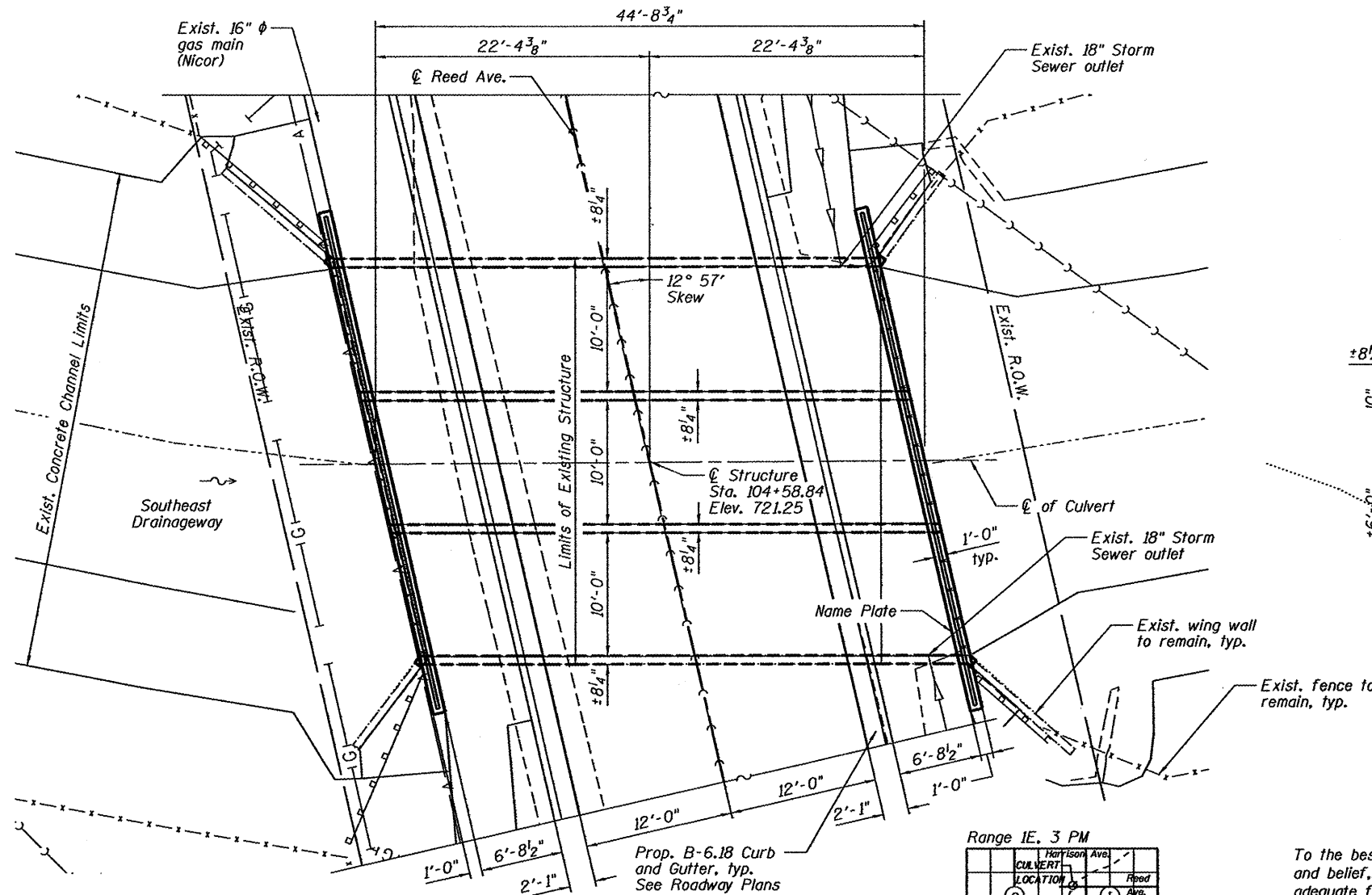
**NAME PLATE**  
 See Std. 515001

**LOADING HS20-44**  
 No future wearing surface allowed  
**DESIGN SPECIFICATIONS**  
 2002 AASHTO Standard Specifications

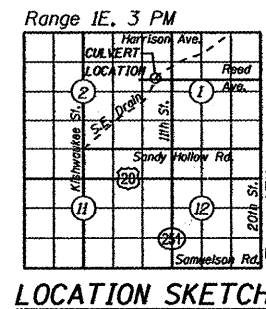
**DESIGN STRESSES**  
**FIELD UNITS**  
 f'c = 3,500 psi  
 fy = 60,000 psi (Reinforcement)

**SEISMIC DATA**  
 Seismic Performance Category (SPC) = A  
 Bedrock Acceleration Coefficient (A) = 4%g  
 Site Coefficient (S) = 1.0

**INDEX OF SHEETS**  
 S-1 General Plan  
 S-2 General Notes and Total Bill of Materials  
 S-3 Culvert Top Slab Details  
 S-4 Culvert Details  
 S-5 Railing & Wall Repair Details



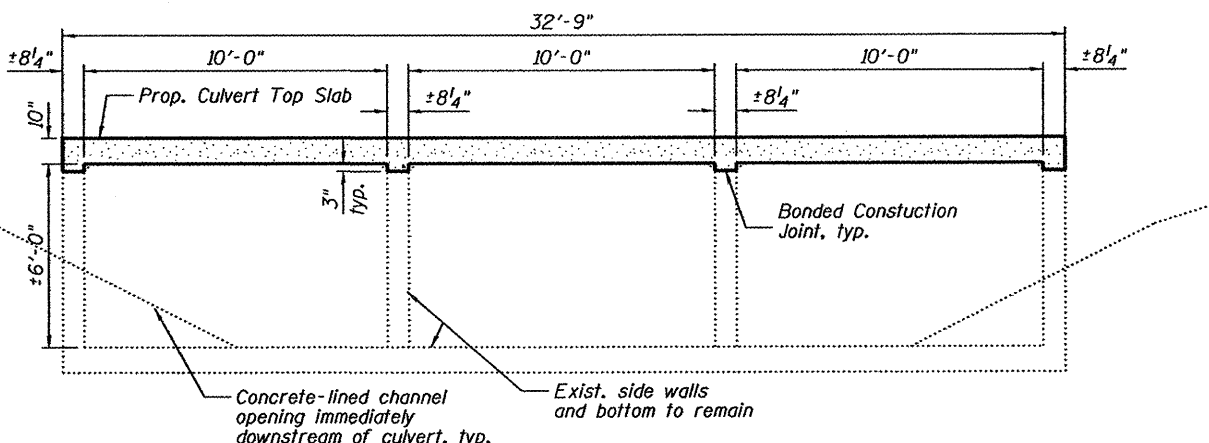
**PLAN**



**LOCATION SKETCH**

To the best of my knowledge, information and belief, this bridge design is structurally adequate for the design loading shown on the plans. The design is an economical one for the style of structure and complies with requirements of the current "AASHTO Standard Specifications for Highway Bridges".

*Michael S. Green*  
 Structural Engineer Expires: 11/30/2012  
 HR Green



**SECTION THRU BARREL**  
 Dimensions at right L's to centerline of culvert.

**GENERAL PLAN  
 REED AVE. OVER  
 SOUTHEAST DRAINAGE WAY  
 SEC. 09-00558-00-BR  
 M.S. 3634  
 WINNEBAGO COUNTY  
 S.N. 101-6083**

COUNTRY NAME: Kevin M. Artt  
 PROJECT CONTACT: City of Rockford  
 CLIENT: 3/23/2012 10:39:00 AM  
 DATE PLOTTED: 86100434-09a.dgn  
 FILE NAME: pdfplot  
 PLOT DRIVER: standard-trans.tbl  
 PEN TABLE:



USER NAME = whood	DESIGNED - KMA	REVISED -
PLOT SCALE =	CHECKED - RGD	REVISED -
PLOT DATE = 3/23/2012	DRAWN - WJH	REVISED -
	CHECKED - 3/26/12	REVISED -

**CITY OF ROCKFORD**

SHEET NO. S-1 OF S-5 SHEETS

M.S.	SECTION	COUNTY	TOTAL SHEETS	SHEET NO.
3634	09-00558-00-BR	WINNEBAGO	15	8
CONTRACT NO. 85562			ILLINOIS FED. AID PROJECT	

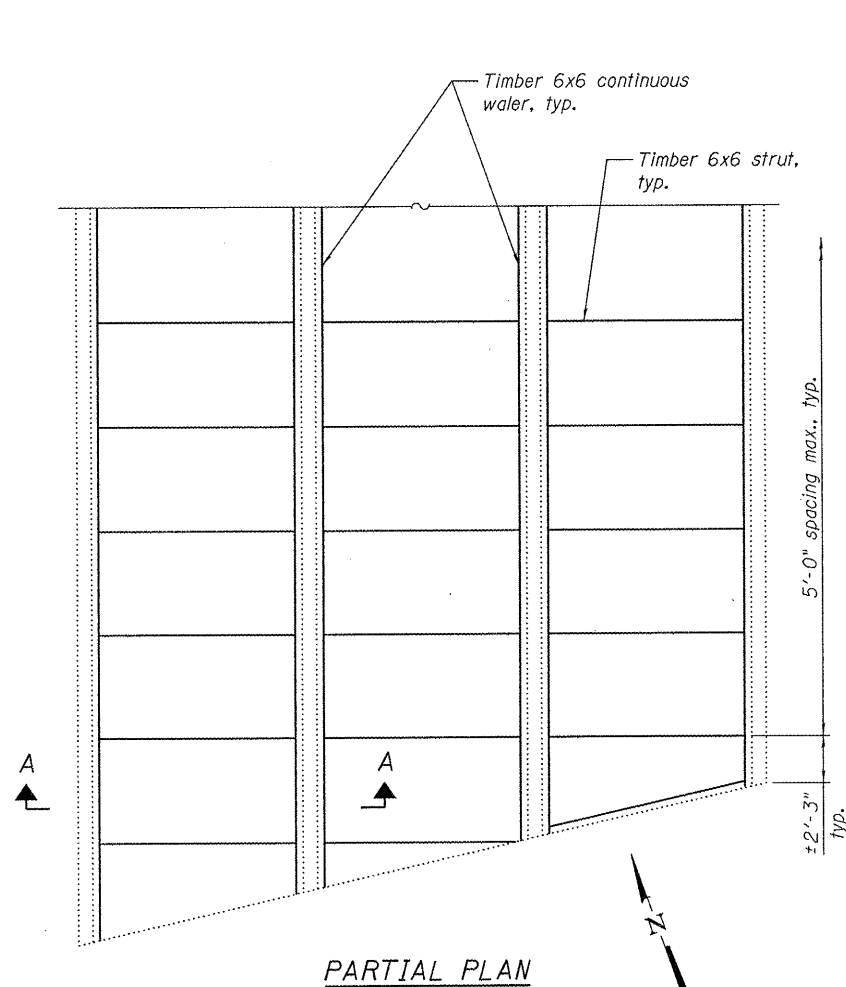


**GENERAL NOTES:**

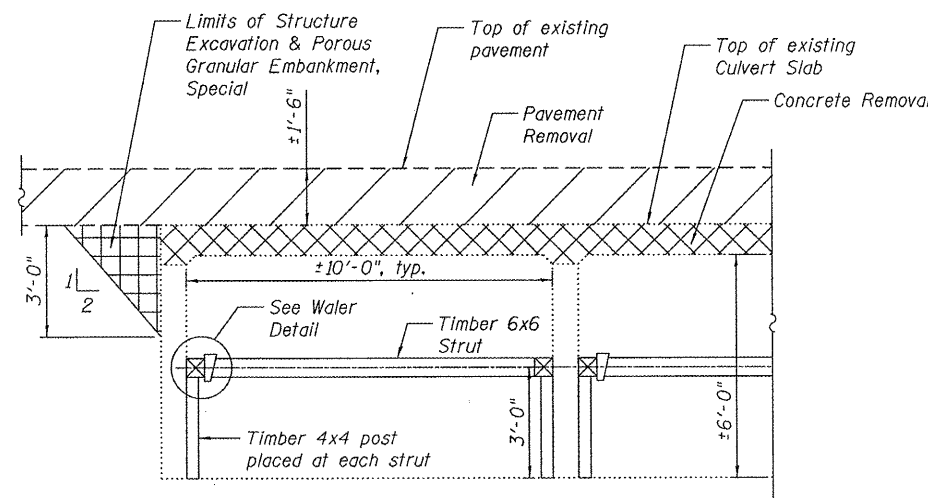
1. Reinforcement bars shall conform to the requirements of ASTM A 706 Gr 60. See Special Provisions.
2. Reinforcement bars designated (E) shall be epoxy coated.
3. Plan dimensions and details relative to existing structure are subject to nominal construction variations. The Contractor shall field verify existing dimensions and details affecting new construction and make necessary approved adjustments prior to construction or ordering of materials. Such variations shall not be cause for additional compensation for a change in scope of the work, however, the Contractor will be paid for the quantity actually furnished at the unit price bid for the work.
4. Plans for existing structure are not available.

**TOTAL BILL OF MATERIAL**

ITEM	UNIT	QUANTITY	TOTAL
Concrete Removal	Cu. Yd.	42.3	42.3
Structure Excavation	Cu. Yd.	29.8	29.8
Protective Coat	Sq. Yd.	45	45
Reinforcement Bars	Pound	12,780	12,780
Reinforcement Bars, Epoxy Coated	Pound	1,580	1,580
Parapet Railing	Foot	79	79
Name Plates	Each	1	1
Concrete Box Culverts	Cu. Yd.	56.9	56.9
Porous Granular Embankment, Special	Cu. Yd.	50.0	50.0
Structural Repair of Concrete (Depth Less than or Equal to 5")	Sq. Ft.	55	55

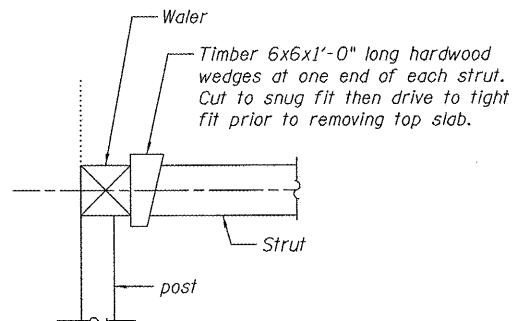


**PARTIAL PLAN**



**SECTION A-A**

Horizontal dimensions at rt. L's to  $\odot$  culvert



**WALER DETAIL**

**TEMPORARY CULVERT WALL BRACING DETAILS**

**TEMPORARY CULVERT BRACING SPECIFICATIONS**

Excavate behind culvert side wall as shown prior to removing top slab and prior to placing temporary bracing. Place bracing assembly after excavation and prior to removing culvert top slab.

The temporary bracing shown is a suggested minimum for bidding purposes. It does not accommodate for surcharge loading due to placement of construction equipment. The Contractor is responsible for maintaining and protecting the portions of the culvert to remain. Alternate bracing methods may be proposed to the Engineer provided the alternative bracing design submittal is sealed by an IL Licensed Structural Engineer.

The Contractor is made aware of existing utilities near the existing culvert.

The temporary bracing shall not be removed until the proposed culvert top slab has cured in accordance with the applicable portions of Section 503 of the Standard Specifications.

Timber members shall be southern pine or douglas fir.

Furnishing, installing and removing the temporary bracing will not be paid for separately, but will be included in the unit price bid for "Concrete Box Culverts."

COMPANY NAME: Kevin M. Arft  
 PROJECT CONTACT: City of Rockford  
 CLIENT: Rockford, IL  
 FILE NAME: 09-00558-00-BR  
 PLOT DRIVER: standard-trans.tbl  
 PEN TABLE: standard-trans.tbl



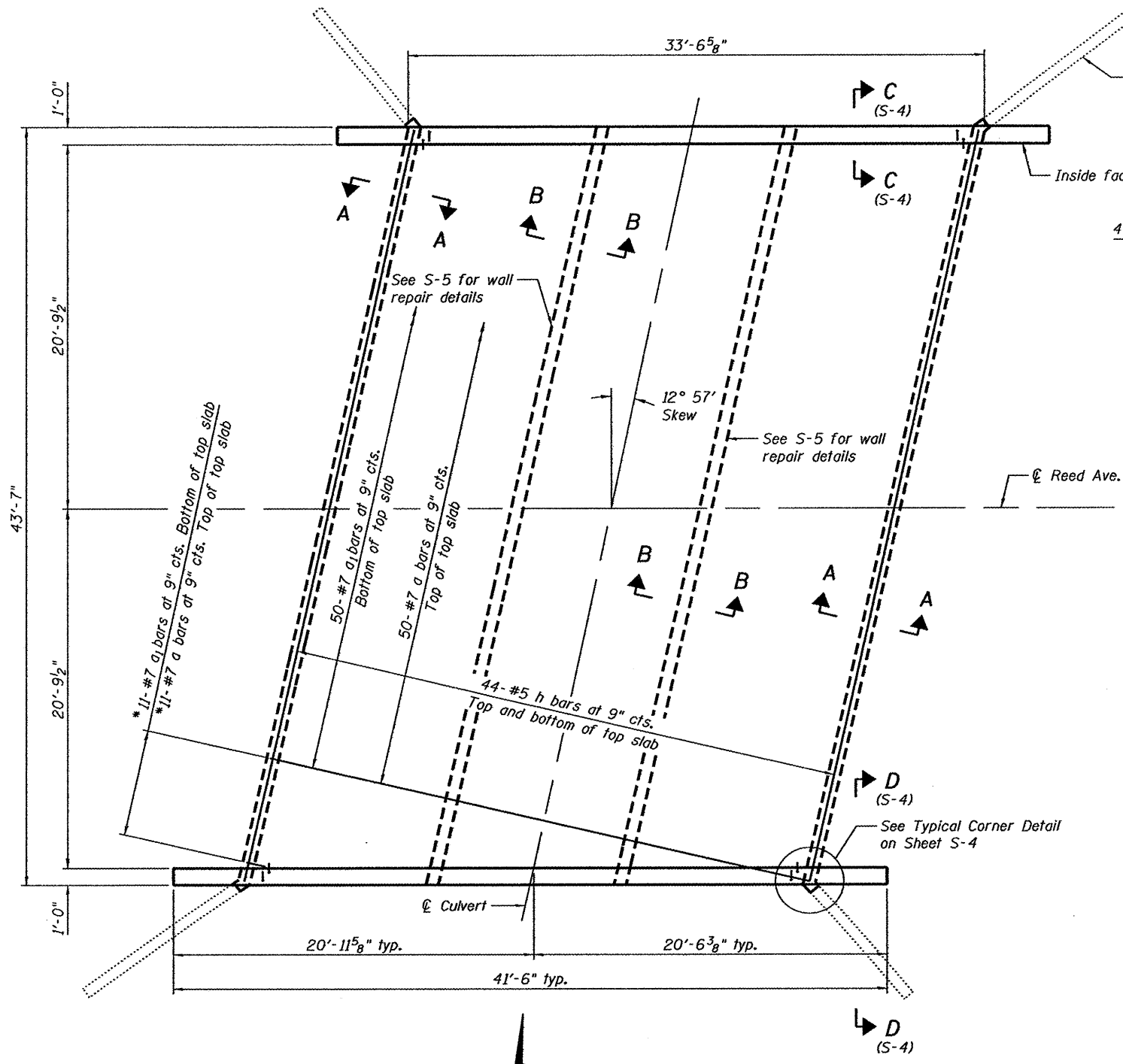
USER NAME =	DESIGNED - KMA	REVISED -
	CHECKED - RGD	REVISED -
PLOT SCALE =	DRAWN - WJH	REVISED -
PLOT DATE = 4/3/2012	CHECKED - 4/3/12	REVISED -

**CITY OF ROCKFORD**

**GENERAL NOTES AND TOTAL BILL OF MATERIALS  
 REED AVENUE OVER THE SOUTHEAST DRAINAGEWAY**

M.S.	SECTION	COUNTY	TOTAL SHEETS	SHEET NO.
3634	09-00558-00-BR	WINNEBAGO	16	9
			CONTRACT NO. 85562	
ILLINOIS FED. AID PROJECT				

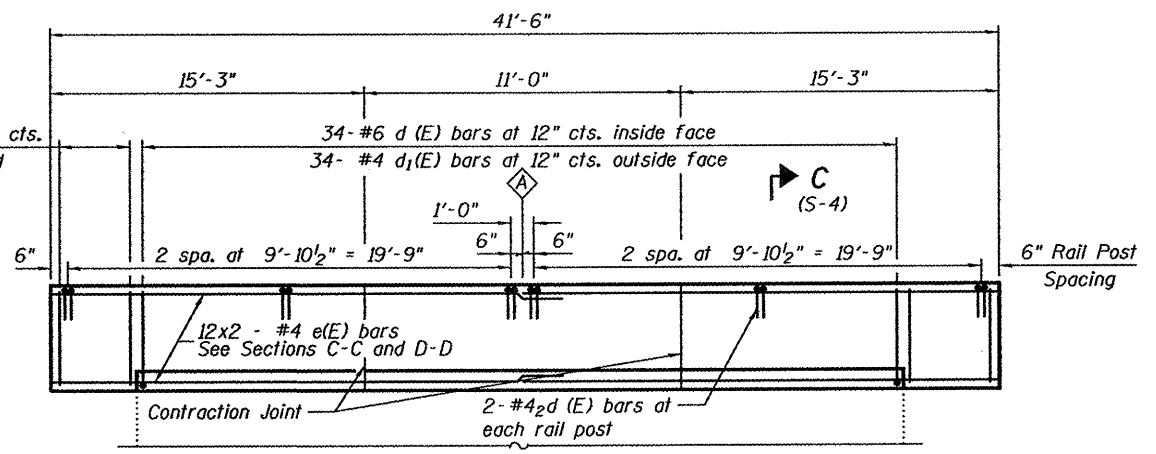
SHEET NO. S-2 OF S-5 SHEETS



PLAN

\* Order a and a<sub>1</sub> bars full length. Cut to fit skew and use remainder of bars in opposite end

Notes:  
1. Existing reinforcement shall be cleaned and incorporated into the new construction. Cost included with Concrete Removal.

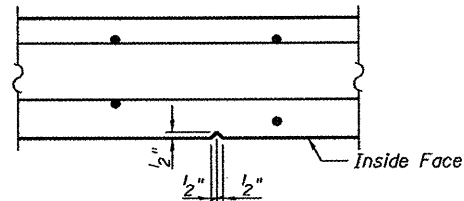


**INSIDE HEADWALL ELEVATION**

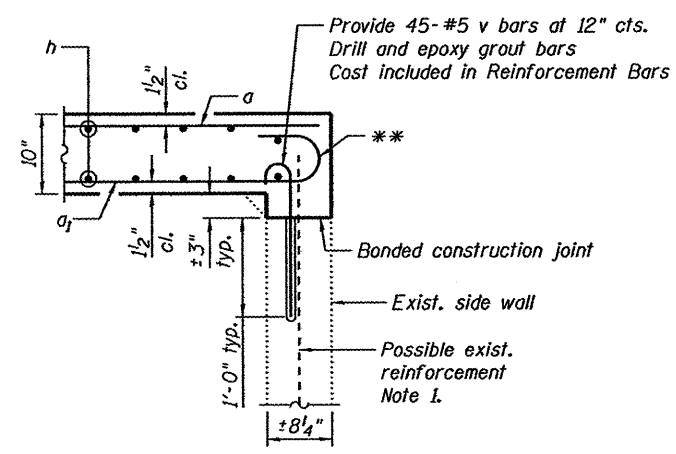
Culvert walls not shown for clarity  
See Sheet S-5

**MINIMUM BAR LAP**

#4 bar = 2'-0"  
#5 bar = 2'-6"

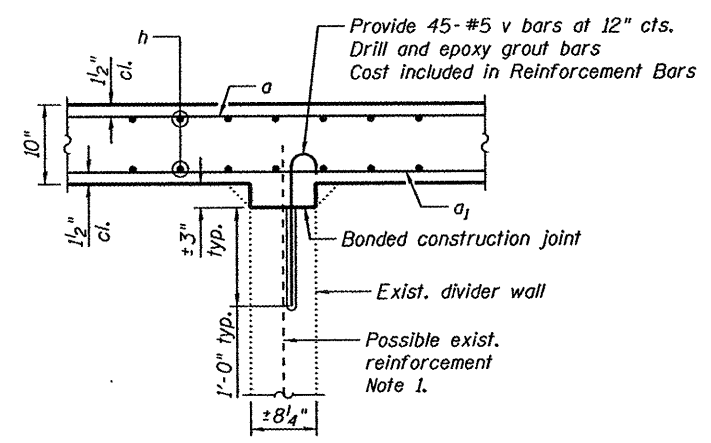


**CONTRACTION JOINT DETAIL**



**SECTION A-A**

\*\* Tilt hooks to meet clear cover requirements



**SECTION B-B**

COMPANY NAME: Kevin M. Arft  
PROJECT CONTACT: City of Rockford  
CLIENT: 3/23/2012 14:054 PM  
DATE PLOTTED: 8/10/2012 15:46:09  
FILE NAME: 8/10/2012-15:46:09  
DRAWN BY: arft  
PLOT TABLE: standard-trans.tbl



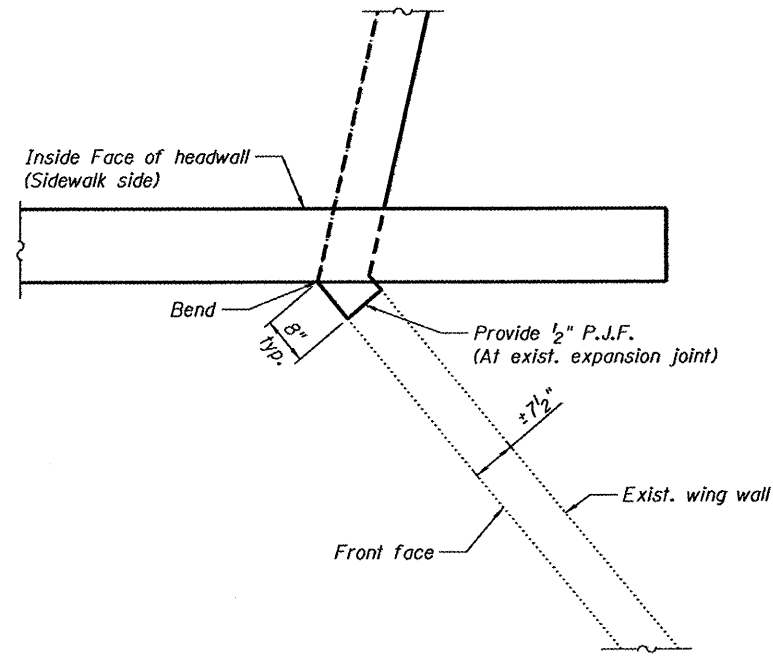
USER NAME = whood	DESIGNED - KMA	REVISED -
CHECKED - RGD	REVISIONS -	
PLOT SCALE =	DRAWN - WJH	REVISED -
PLOT DATE = 3/23/2012	CHECKED - 3/26/12	REVISED -

CITY OF ROCKFORD

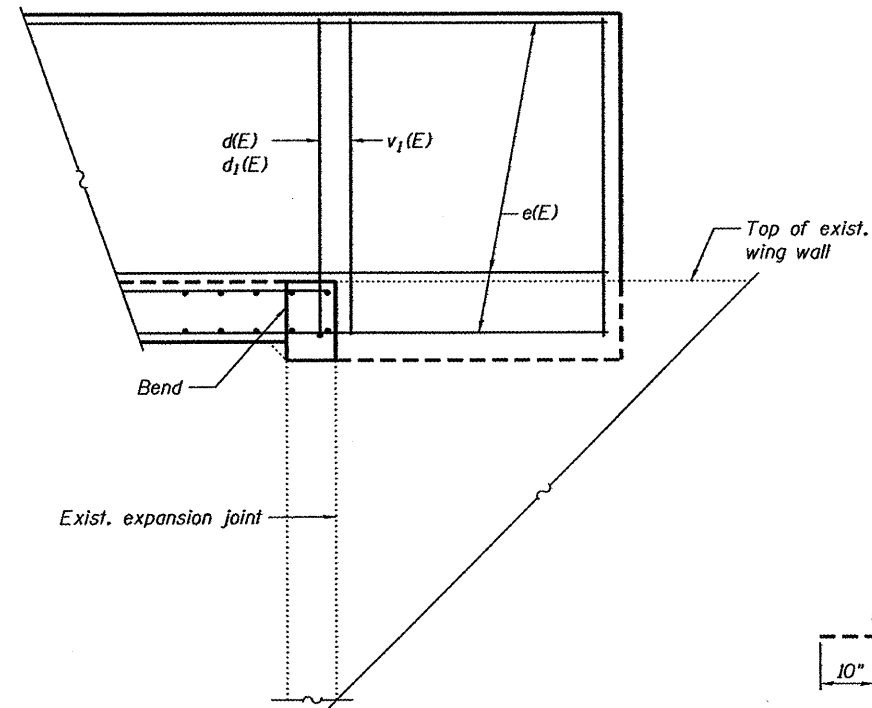
**CULVERT TOP SLAB DETAILS**  
**REED AVENUE OVER THE SOUTHEAST DRAINAGEWAY**

SHEET NO. S-3 OF S-5 SHEETS

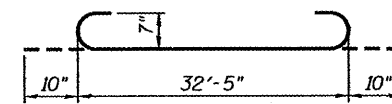
M.S.	SECTION	COUNTY	TOTAL SHEETS	SHEET NO.
3634	09-00558-00-BR	WINNEBAGO	16	10
CONTRACT NO. 85562			ILLINOIS FED. AID PROJECT	



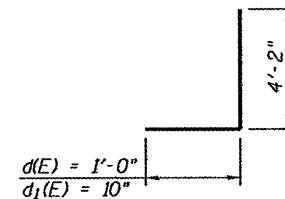
**PLAN**  
Southeast corner shown  
Other corners similar



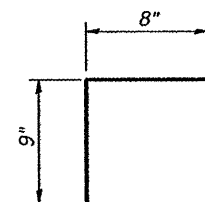
**ELEVATION**  
Looking at front face  
Sidewalk not shown for clarity



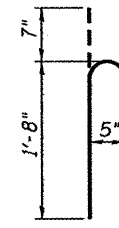
**BAR a (E)**



**BARS d(E) & d1(E)**



**BAR d2(E)**



**BAR v**

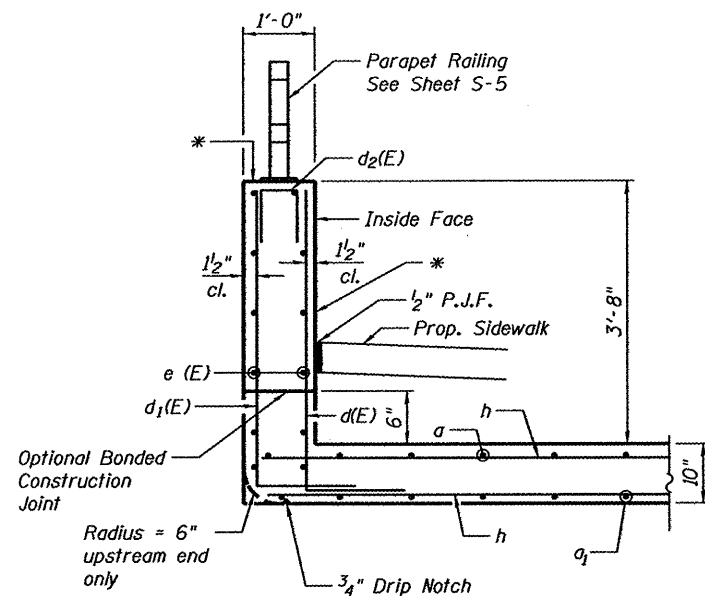
**TYPICAL CORNER DETAIL**

**BILL OF MATERIAL**

Bar	No.	Size	Length	Shape
a	61	#7	32'- 5"	—
a	61	#7	34'- 1"	⌋
d (E)	68	#6	5'- 2"	┌
d1(E)	68	#4	5'- 0"	┌
d2(E)	24	#4	2'- 2"	┌
e (E)	48	#4	21'- 11"	—
h	88	#5	44'- 4"	—
v	180	#5	2'- 3"	—
v1(E)	32	#4	4'- 2"	—
Concrete Box Culverts			Cu. Yd.	56.9
Reinforcement Bars			Pound	12,780
Reinforcement Bars, Epoxy Coated			Pound	1,580
Protective Coat			Sq. Yd.	45

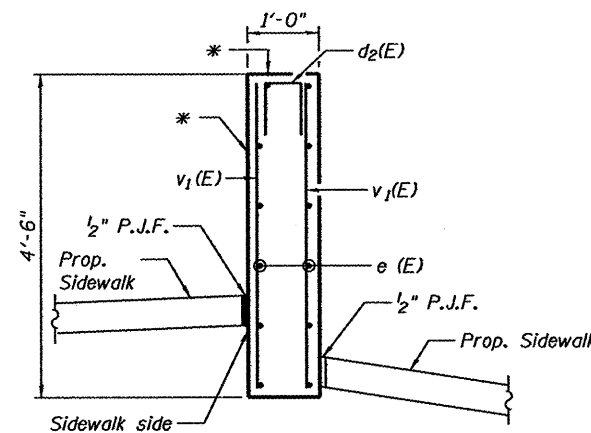
Bars indicated thus 1 x 15-#5 etc. indicates 1 line of bars with 15 lengths per line.

Notes:  
1. Existing reinforcement shall be cleaned and incorporated into the new construction. Cost included with Concrete Removal.



**SECTION C-C**

\* Surface to receive Protective Coat, full length, each side of culvert.



**SECTION D-D**

\* Surface to receive Protective Coat, full length, each side of culvert.

COMPANY NAME: HRGreen.com  
PROJECT: REED AVENUE OVER THE SOUTHEAST DRAINAGEWAY  
CLIENT: CITY OF ROCKFORD  
DATE PLOTTED: 3/23/2012 10:50:00 PM  
FILE NAME: 09-00558-00-01.dgn  
PLOT DRIVER: plot.plt  
PEN TABLE: standard-trans.tbl



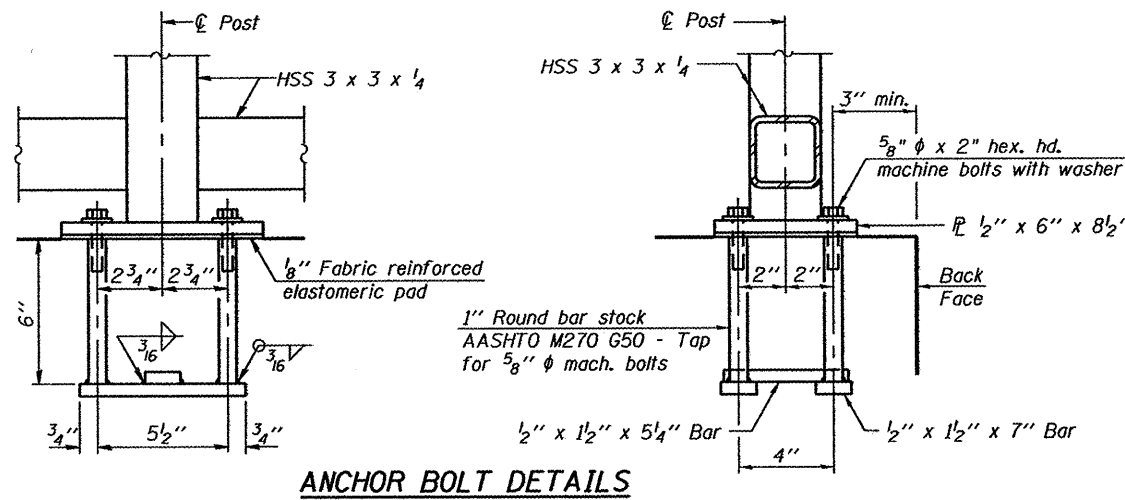
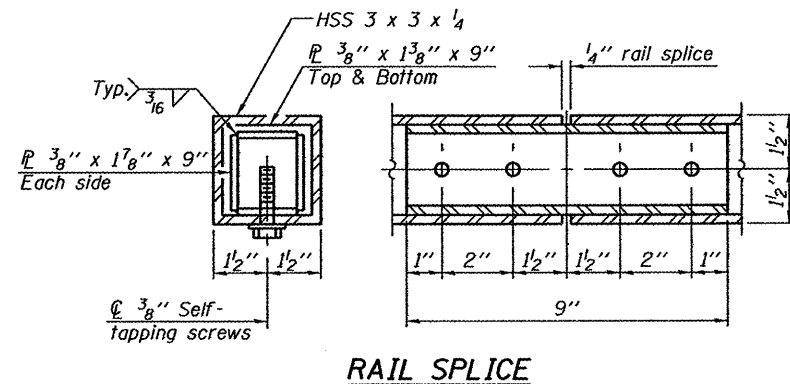
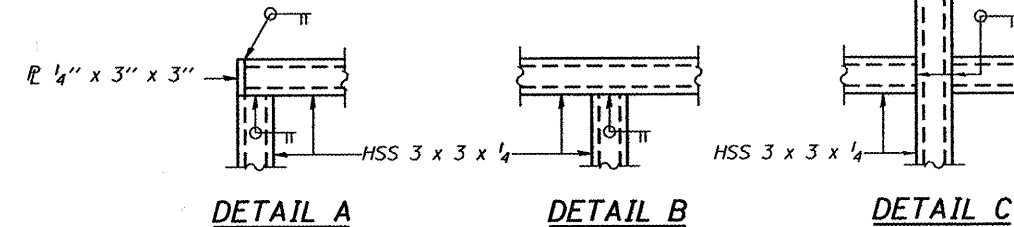
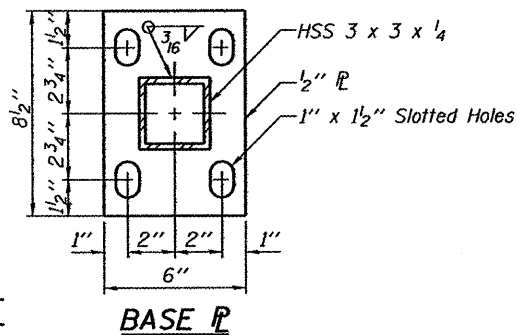
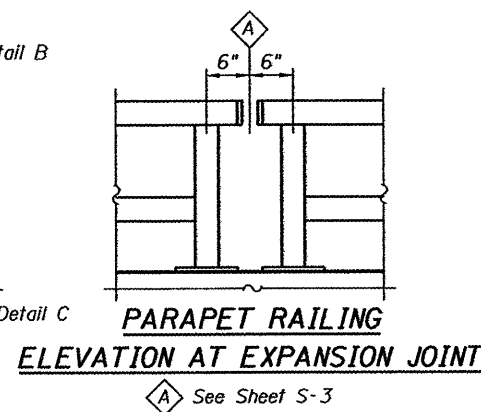
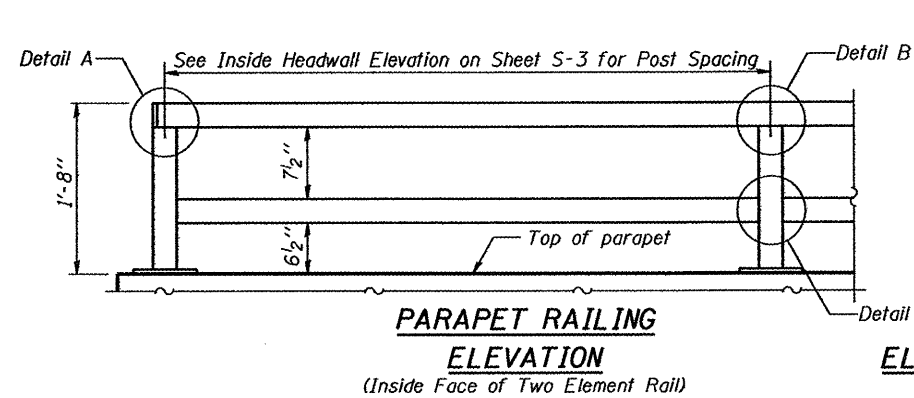
USER NAME = whood	DESIGNED - KMA	REVISED -
	CHECKED - RGD	REVISED -
PLOT SCALE =	DRAWN - WJH	REVISED -
PLOT DATE = 3/23/2012	CHECKED - 3/26/12	REVISED -

**CITY OF ROCKFORD**

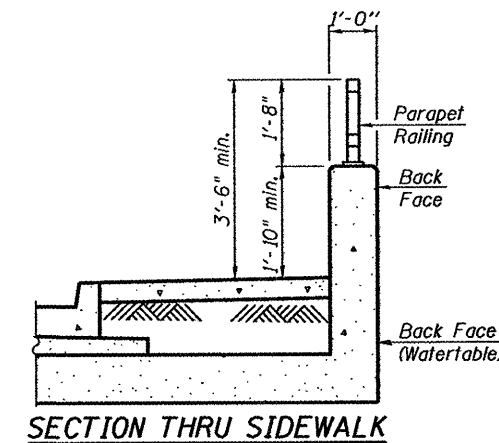
**CULVERT DETAILS**  
**REED AVENUE OVER THE SOUTHEAST DRAINAGEWAY**

SHEET NO. 5-4 OF 5-5 SHEETS

M.S.	SECTION	COUNTY	TOTAL SHEETS	SHEET NO.
3634	09-00558-00-BR	WINNEBAGO	16	11
CONTRACT NO. 85562			ILLINOIS FED. AID PROJECT	



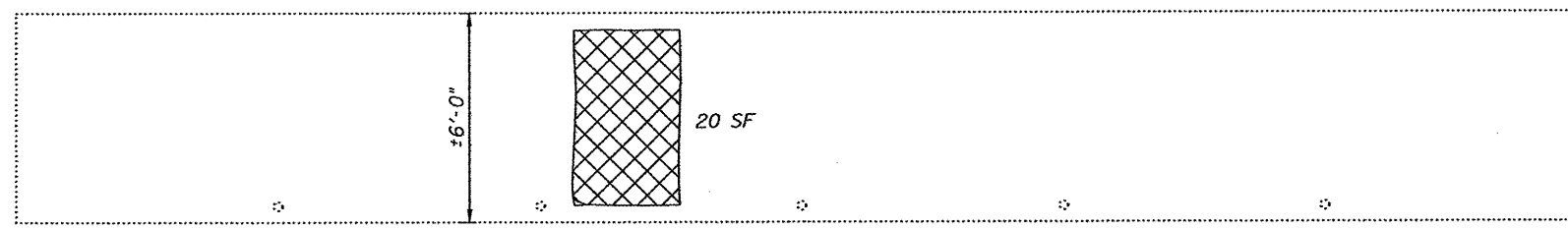
**ANCHOR BOLT DETAILS**  
 In lieu of the cast-in-place anchor device shown, the Contractor has the option of drilling and setting 5/8"  $\phi$  anchor rods according to Article 509.06 of the Standard Specifications. Embedment shall be according to the manufacturer's specifications.



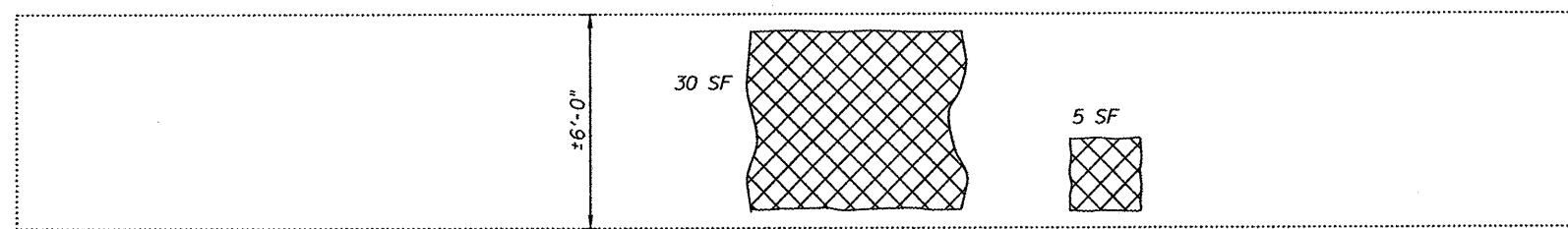
All steel rail elements shall be galvanized according to Article 509.05 of the Standard Specifications.

**BILL OF MATERIAL**

Item	Unit	Quantity
Parapet Railing	Foot	79



**WEST SIDE OF WEST CENTER WALL ELEV.**  
 Looking East



**EAST SIDE OF EAST CENTER WALL ELEV.**  
 Looking West

**BILL OF MATERIAL**

Item	Unit	Quantity
Structural Repair of Concrete (Depth less than or Equal to 5")	Sq.Ft	55

Structural Repair of Concrete (Depth Less than or Equal to 5")



COMPANY NAME: Kevin M. Artt  
 PROJECT CONTACT: City of Rockford  
 CLIENT: 3/23/2012 11:43:04 AM  
 DATE PLOTTED: 8/10/14-Rellden  
 FILE NAME: pef.dwg  
 PLOT DRIVER: pef.plt  
 PEN TABLE: standard-trans.tbl



USER NAME = whood  
 PLOT SCALE =  
 PLOT DATE = 3/23/2012

DESIGNED - KMA  
 CHECKED - RGD  
 DRAWN - W.JH  
 CHECKED - 3/26/12

REVISED -  
 REVISED -  
 REVISED -  
 REVISED -

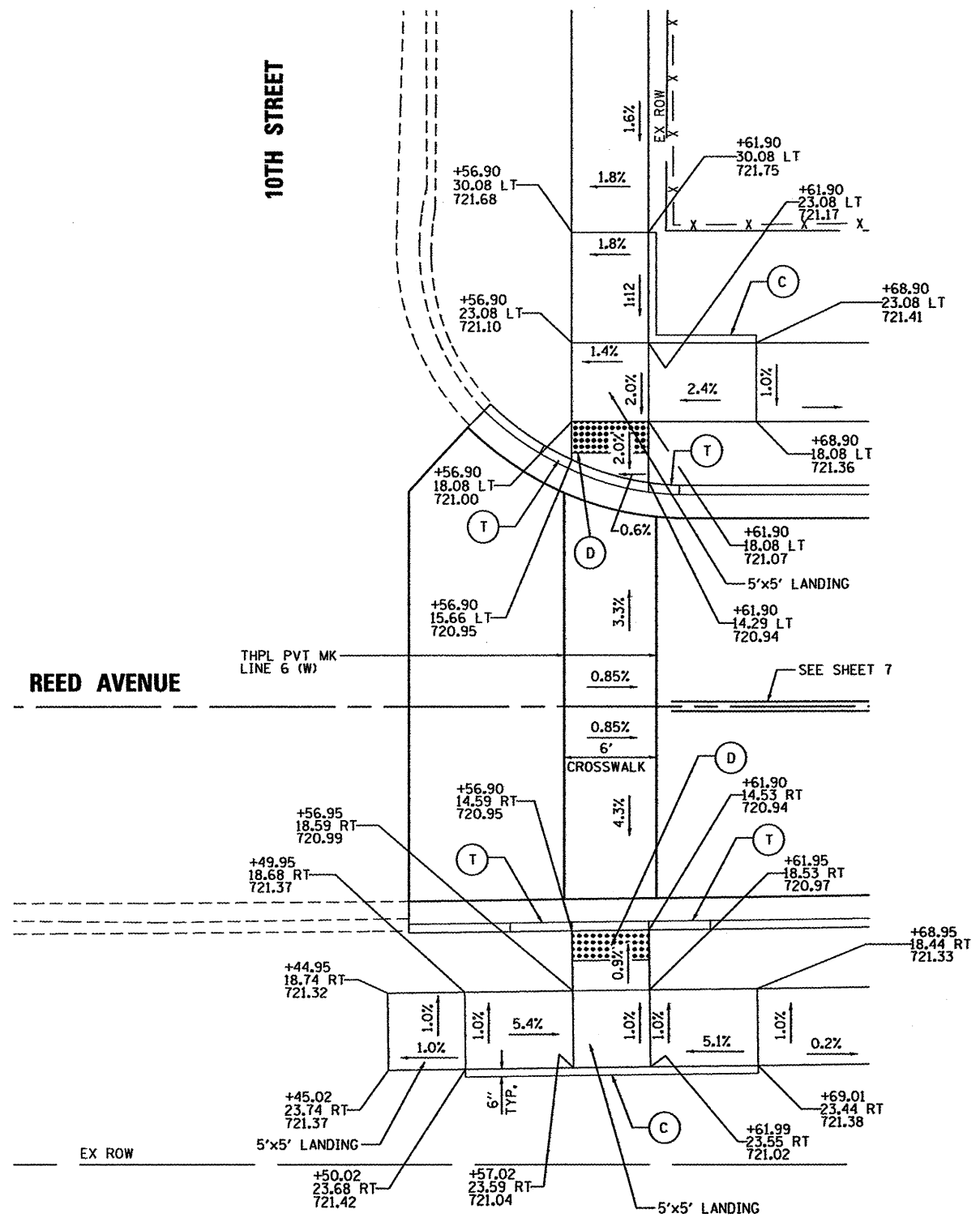
CITY OF ROCKFORD

RAILING AND WALL REPAIR DETAILS  
 REED AVENUE OVER THE SOUTHEAST DRAINAGEWAY

SHEET NO. S-5 OF S-5 SHEETS

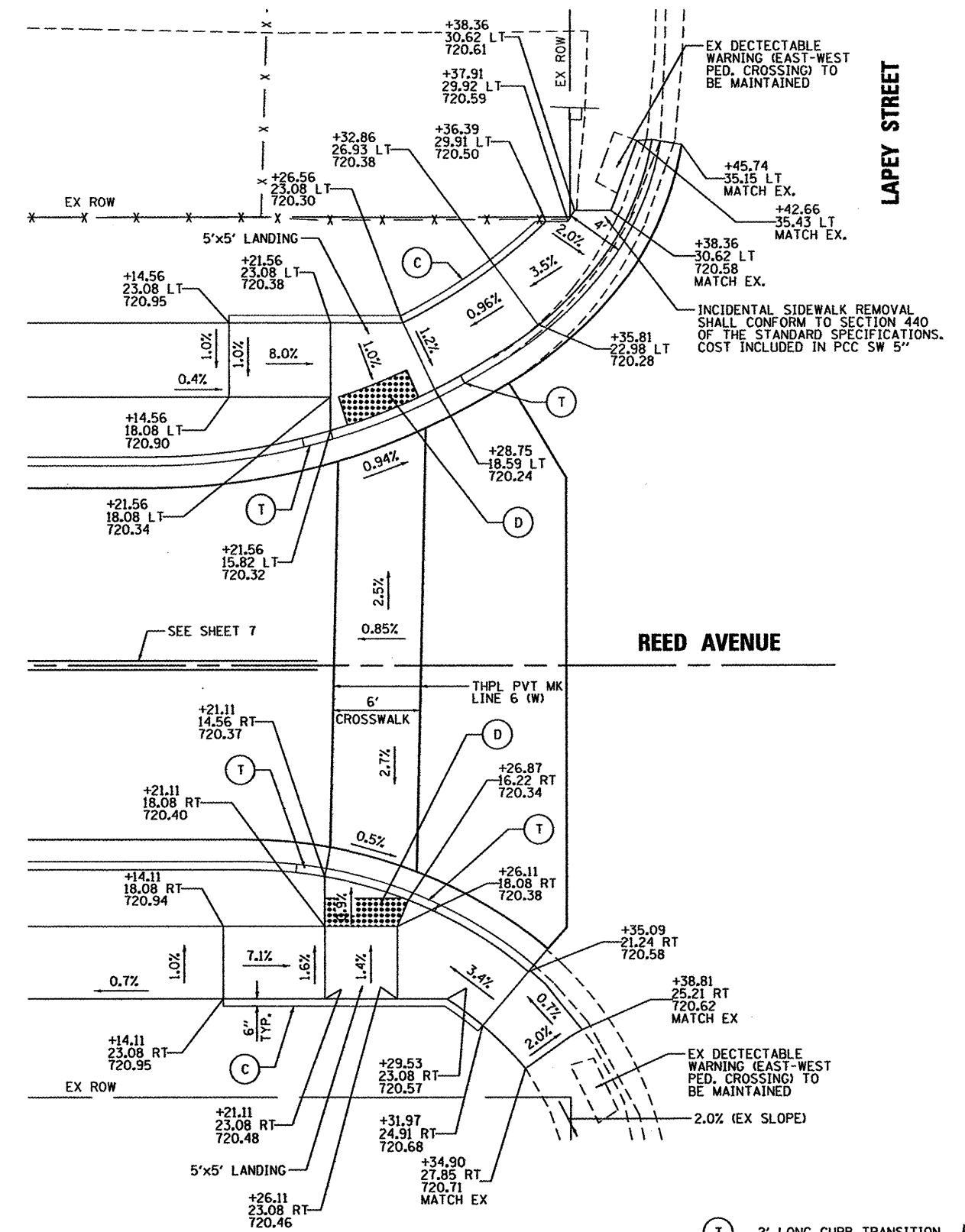
M.S.	SECTION	COUNTY	TOTAL SHEETS	SHEET NO.
3634	09-00558-00-BR	WINNEBAGO	16	12
CONTRACT NO. 85562			ILLINOIS FED. AID PROJECT	





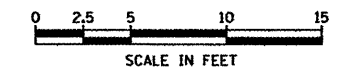
**REED AVENUE AND 10TH STREET  
SIDEWALK RAMP ELEVATION PLAN**

- (T) 2' LONG CURB TRANSITION
- (D) DETECTABLE WARNING
- (C) SIDE CURB, ±6" TALL

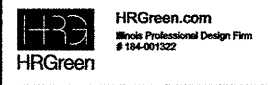


**REED AVENUE AND LAPEY STREET  
SIDEWALK RAMP ELEVATION PLAN**

- (T) 2' LONG CURB TRANSITION
- (D) DETECTABLE WARNING
- (C) SIDE CURB, ±6" TALL



COMPANY NAME: HRGreen  
 PROJECT CONTACT: Kevlin M. Arft  
 CLIENT: City of Rockford  
 DATE PLOTTED: 3/23/2012 10:40 AM  
 FILE NAME: 06100434-001.dgn  
 PLOT DRIVER: pdfplot  
 PEN TABLE: standard-trans.tbl

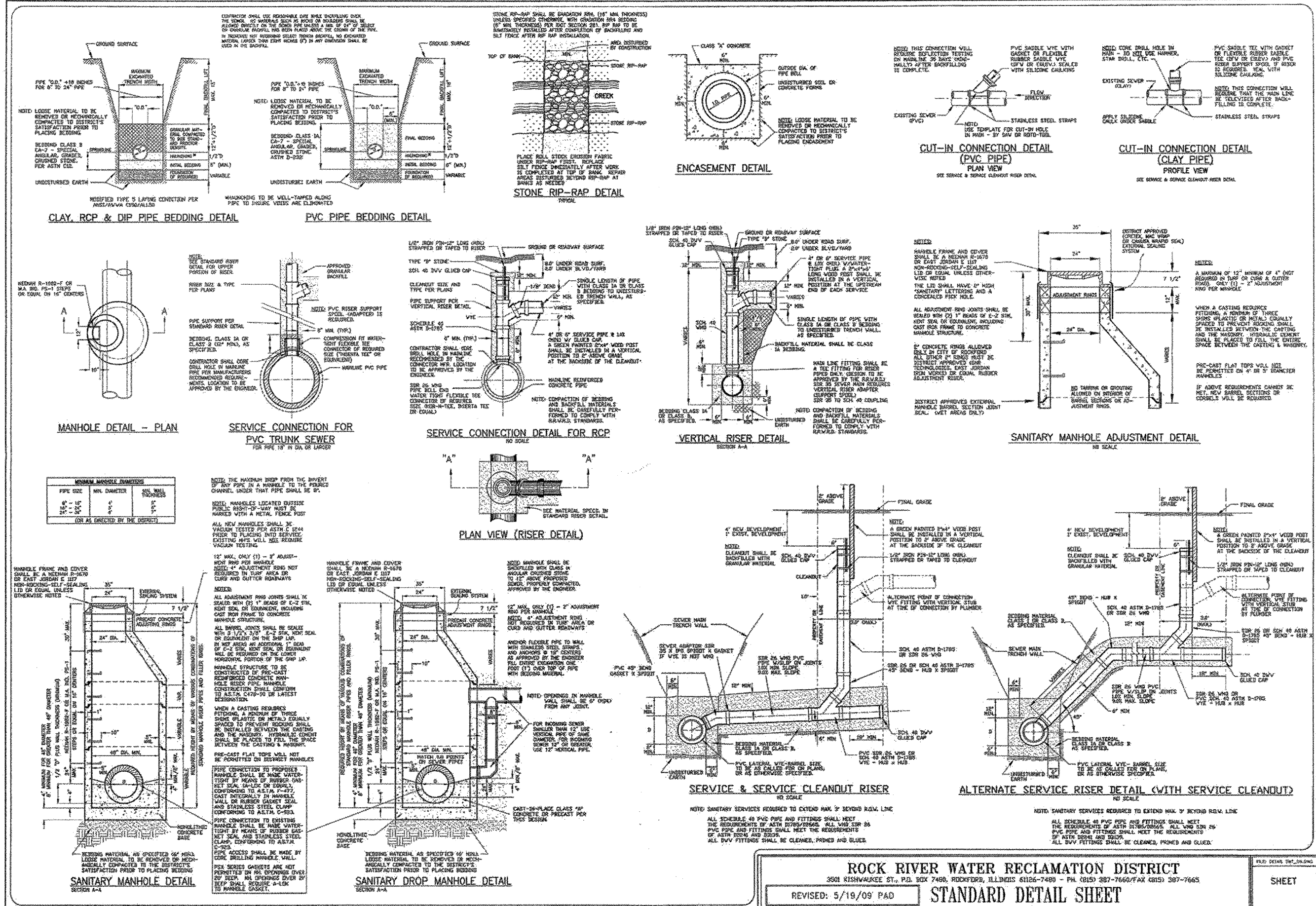


USER NAME = whood	DESIGNED - KMA	REVISED -
FILE NAME = 06100434-001.dgn	DRAWN - WJH	REVISED -
PLOT SCALE =	CHECKED - RGD	REVISED -
PLOT DATE = 3/23/2012	DATE - 3/26/12	REVISED -

**CITY OF ROCKFORD**

REED AVENUE OVER SOUTHEAST DRAINAGEWAY SIDEWALK RAMP DETAILS			
SCALE:	SHEET NO. OF SHEETS	STA. TO STA.	

M.S.	SECTION	COUNTY	TOTAL SHEETS	SHEET NO.
3634	09-00558-00-BR	WINNEBAGO	16	13
CONTRACT NO. 85562				
FED. ROAD DIST. NO. 2 ILLINOIS FED. AID PROJECT				



**ROCK RIVER WATER RECLAMATION DISTRICT**  
 3501 KISHWAUKEE ST., P.O. BOX 7480, ROCKFORD, ILLINOIS 61126-7480 - PH. (815) 397-7660/FAX (815) 397-7665

REVISID: 5/19/09 PAD **STANDARD DETAIL SHEET**

SHEET

COMPANY NAME: HRGreen.com  
 PROJECT CONTACT: Kevin M. Arlt  
 DATE PLOTTED: 5/22/2012 14:59:09  
 PLOT NAME: 86100434-SanDet.dgn  
 PLOT DRIVER: pldrvt  
 PEN TABLE: 8-trans.tbl

HRGreen.com  
 Making Professional Design Firm  
 #194-01322

USER NAME = whood	DESIGNED = KMA	REVISED =	REED AVENUE OVER SOUTHEAST DRAINAGEWAY	M.S.	SECTION	COUNTY	TOTAL SHEETS	SHEET NO.
FILE NAME = 86100434-SanDet.dgn	DRAWN = WJH	REVISED =	SANITARY MANHOLE DETAILS	3634	09-00558-00-BR	WINNEBAGO	16	14
PLOT SCALE = N.T.S.	CHECKED = RGD	REVISED =	SCALE: N.T.S.	SHEET NO. OF SHEETS STA. TO STA.		FED. ROAD DIST. NO. 2 ILLINOIS FED. AID PROJECT		
PLOT DATE = 3/23/2012	DATE = 3/26/12	REVISED =	CITY OF ROCKFORD		CONTRACT NO. 85562			

COMPANY NAME: Kevin M. Arff  
 PROJECT CONTACT: City of Rockford  
 CLIENT: 3/23/2012 11:46:07 AM  
 DATE PLOTTED: 86100434-xxsec.dgn  
 FILE NAME: p101.dwg  
 PLOT ORIGIN: standard-usps.tbl  
 PLOT TABLE:



USER NAME = whood	DESIGNED - KMA	REVISED -
FILE NAME 86100434-xxsec.dgn	DRAWN - WJH	REVISED -
PLOT SCALE = 10H:5V	CHECKED - RGD	REVISED -
PLOT DATE = 3/23/2012	DATE - 3/26/12	REVISED -

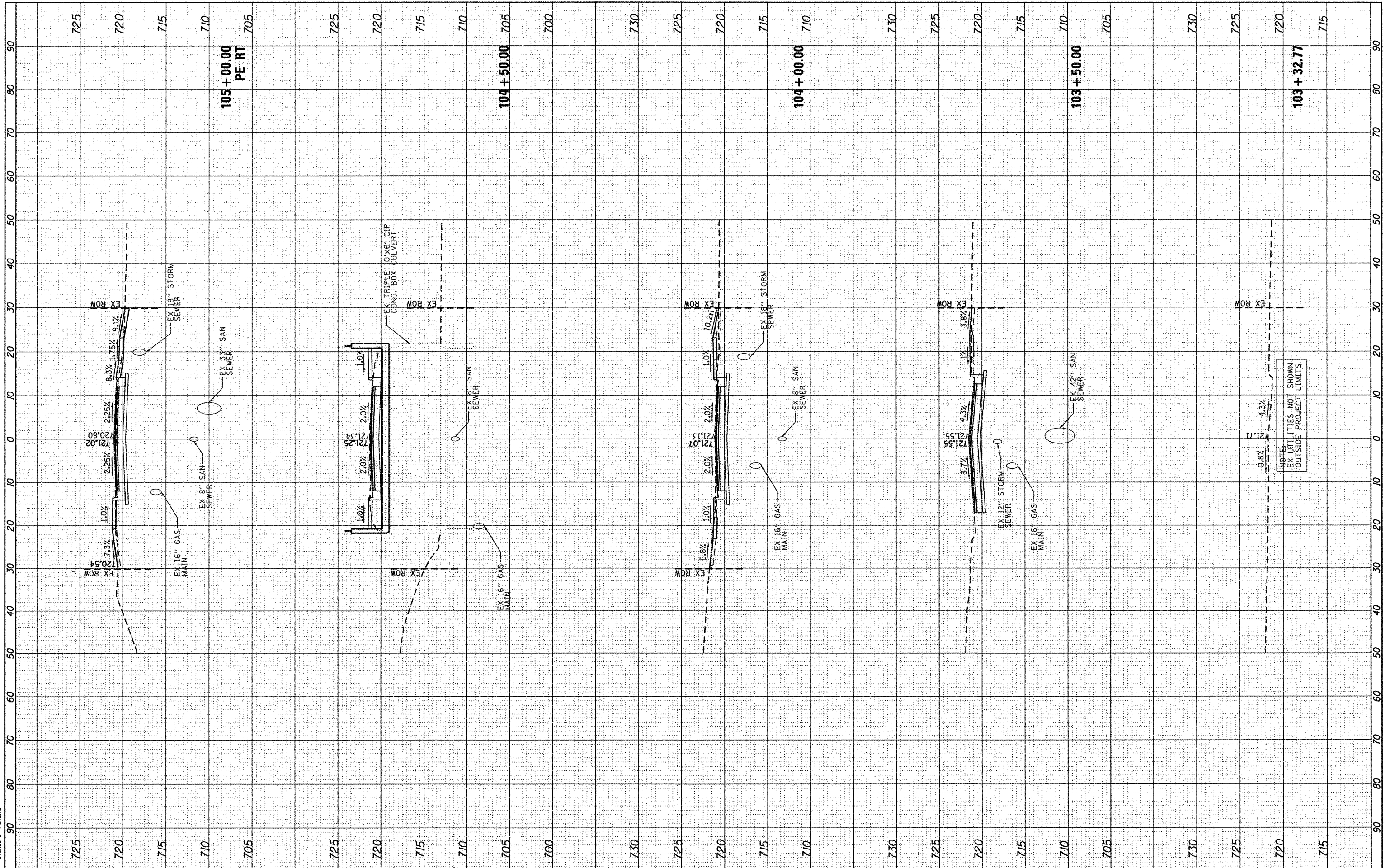
**CITY OF ROCKFORD**

**CROSS SECTIONS  
REED AVENUE**

SCALE: 10H:5V    SHEET NO. 1 OF 2 SHEETS    STA. 103+32.77 TO STA. 105+00.00

M.S.	SECTION	COUNTY	TOTAL SHEETS	SHEET NO.
3634	10-00573-00-BR	Winnebago	16	15
CONTRACT NO.				

FED. ROAD DIST. NO. 2 ILLINOIS FED. AID PROJECT



NOTES:  
 EX UTILITIES NOT SHOWN  
 OUTSIDE PROJECT LIMITS



