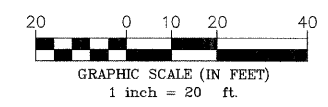


TREES SCHEDULE								
LOCATION	REMOVAL		LOCATION	REMOVAL		LOCATION	REMOVAL	
	(6 TO 15 UNITS) (UNITS)	(OVER 15 UNITS) (UNITS)		(6 TO 15 UNITS) (UNITS)	(OVER 15 UNITS) (UNITS)		(6 TO 15 UNITS) (UNITS)	(OVER 15 UNITS) (UNITS)
STA 9+13		20	STA 10+31		21	STA 12+56		22
STA 9+25	6, 15		STA 10+64		31	STA 12+57		17
STA 9+34		22	STA 10+78		23	STA 12+78	8	
STA 9+36	9		STA 10+84		31	STA 12+93	11	
STA 9+51	11, 12		STA 10+98		20	STA 12+94		32
STA 9+64	12		STA 11+10	9		STA 13+00		21
STA 9+66	6, 6, 9		STA 11+12	9		STA 13+02	9	
STA 9+70	6, 12		STA 11+15		23	STA 13+10		24
STA 9+87	12		STA 11+60		23	STA 13+21 - 15 LT	14	
STA 9+90		17	STA 11+66	6		STA 13+25		35
STA 9+99	15		STA 11+84	12		STA 14+31	8, 15	22
STA 10+03		18	STA 11+83	8		STA 15+82		25
STA 10+18	10		STA 12+35	8				
STA 10+30	12		STA 12+38	15				



CONTRACT NO. 87315
 FED. ROAD DIST. NO. ILLINOIS FED. AID PROJECT
 * BURNS ROAD WEST - FAU 6212
 ** 03-00058-01-FP

TYSON ENGINEERING, INC.
 CONSULTING CIVIL ENGINEERS
 LAND SURVEYORS
 DESIGN FIRM LICENSE #154-001136
 367 SOUTH SCHUYLER AVENUE
 KANKAKEE, ILLINOIS 60901
 PHONE (815) 932-7406

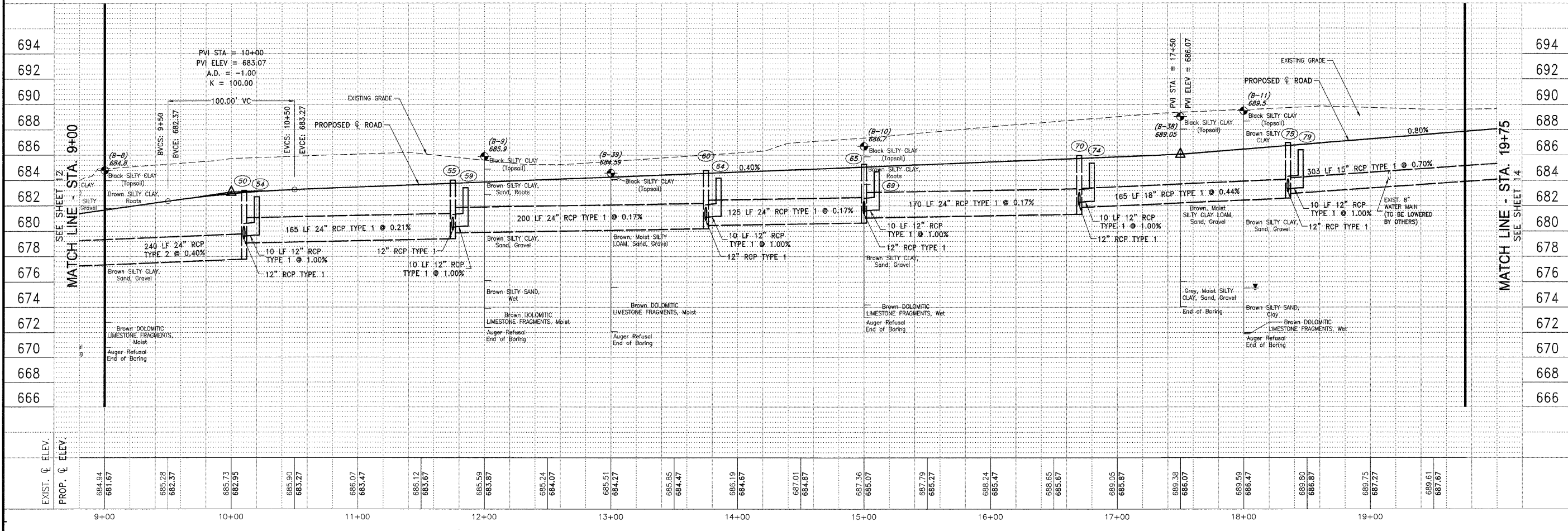
This document and the ideas and designs incorporated herein, as an instrument of professional service, is the property of Tyson Engineering Inc. and is not to be used in whole or in part, for any other project without written authorization of Tyson Engineering Inc.

Do not scale drawings. Use dimensions only.
 Contractor shall be responsible for verifying all dimensions.
 Information hereon and herein is confidential.

REVISIONS			
NO.	DATE	BY	DESCRIPTION

BURNS ROAD WEST
 PLAN AND PROFILE
 STA. 9+00 TO STA. 19+75

PROPOSED IMPROVEMENTS FOR
BURNS ROAD WEST
 FROM CAREER CENTER ROAD
 TO BURNING BUSH DRIVE



SECTION
 03-00058-01-FP

DATE: 3/23/12 JOB NO. E05055
 SCALE: HORIZ.: 1"=40' FILE NO.
 VERT.: 1"=4'
 DRAWN BY: MRG SHEET
 CHECKED BY: SRM 13
 36