

TYSON ENGINEERING, INC.
 CONSULTING CIVIL ENGINEERS
 LAND SURVEYORS
 DESIGN FIRM LICENSE #184-001136
 367 SOUTH SCHUYLER AVENUE
 KANKAKEE, ILLINOIS 60901
 PHONE (815) 932-7406

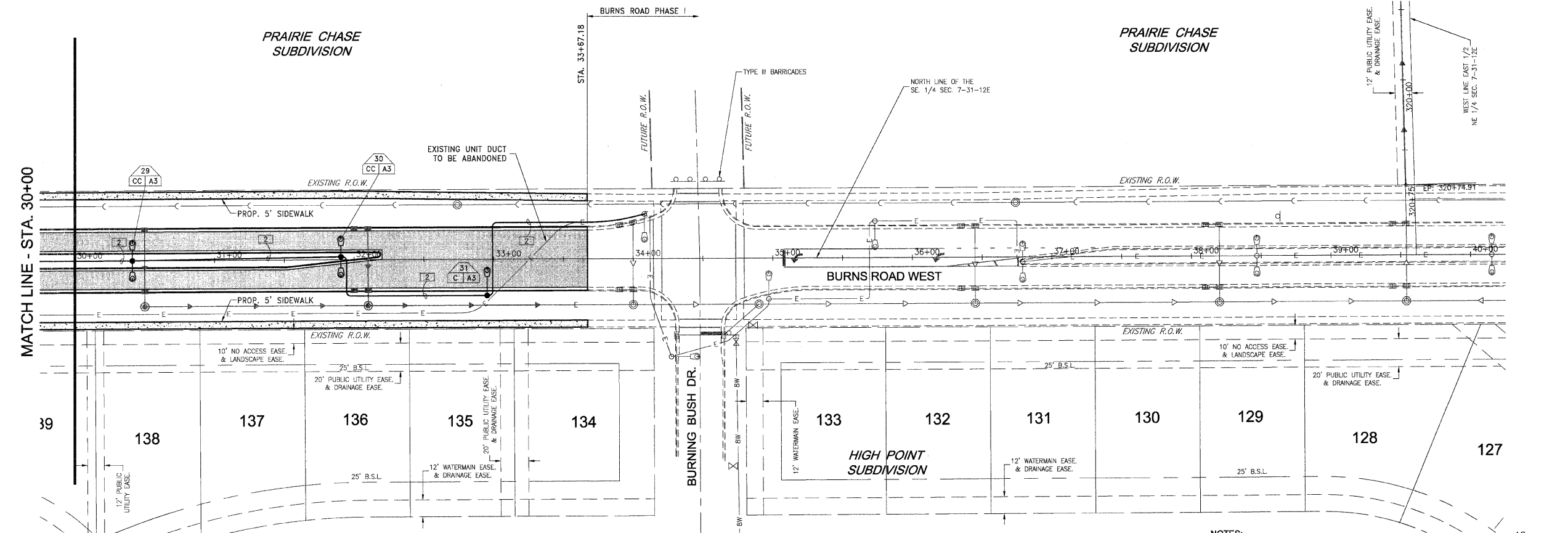
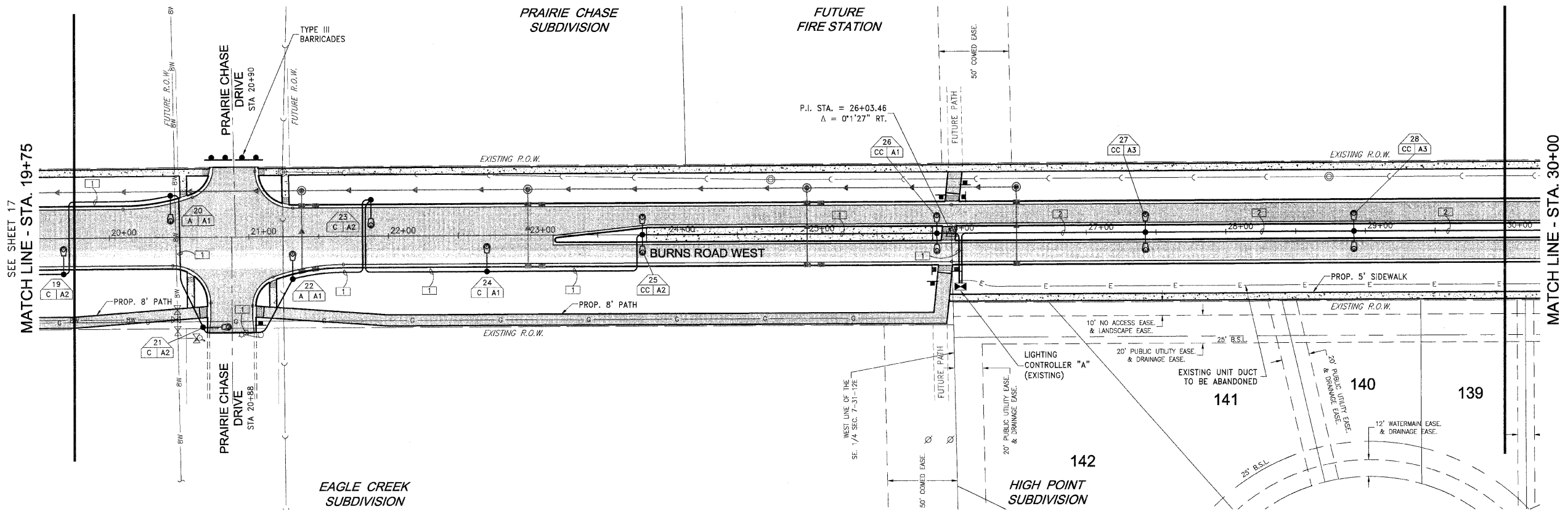
This document and the ideas and designs incorporated herein, as an instrument of professional service, is the property of Tyson Engineering Inc. and is not to be used in whole or in part, for any other project without written authorization of Tyson Engineering Inc.
 Do not scale drawings. Use dimensions only.
 Contractor shall be responsible for verifying all dimensions.
 Information herein and herein is confidential.

REVISIONS			
NO.	DATE	BY	DESCRIPTION

LIGHTING INSTALLATION PLAN

PROJECT: PROPOSED IMPROVEMENTS FOR
BURNS ROAD WEST
 FROM CAREER CENTER ROAD
 TO BURNING BUSH DRIVE

SECTION 03-00058-01-FP	
DATE: 3/23/12	JOB NO. E05055
SCALE: HORZ.: 1"=40' VERT.: N/A	FILE NO.
DRAWN BY: MRG	SHEET
CHECKED BY: SRM	18
	36



- NOTES:
 1. SEE PLAN SHEET 10 FOR LIGHT POLE FOUNDATION STATIONS AND OFFSET INFORMATION.
 2. CONDUIT UNDER ROADWAY SHALL BE SCH. 80.
 3. SEE PLAN SHEET 19 FOR LUMINAIRE AND CABLE SCHEDULES.

