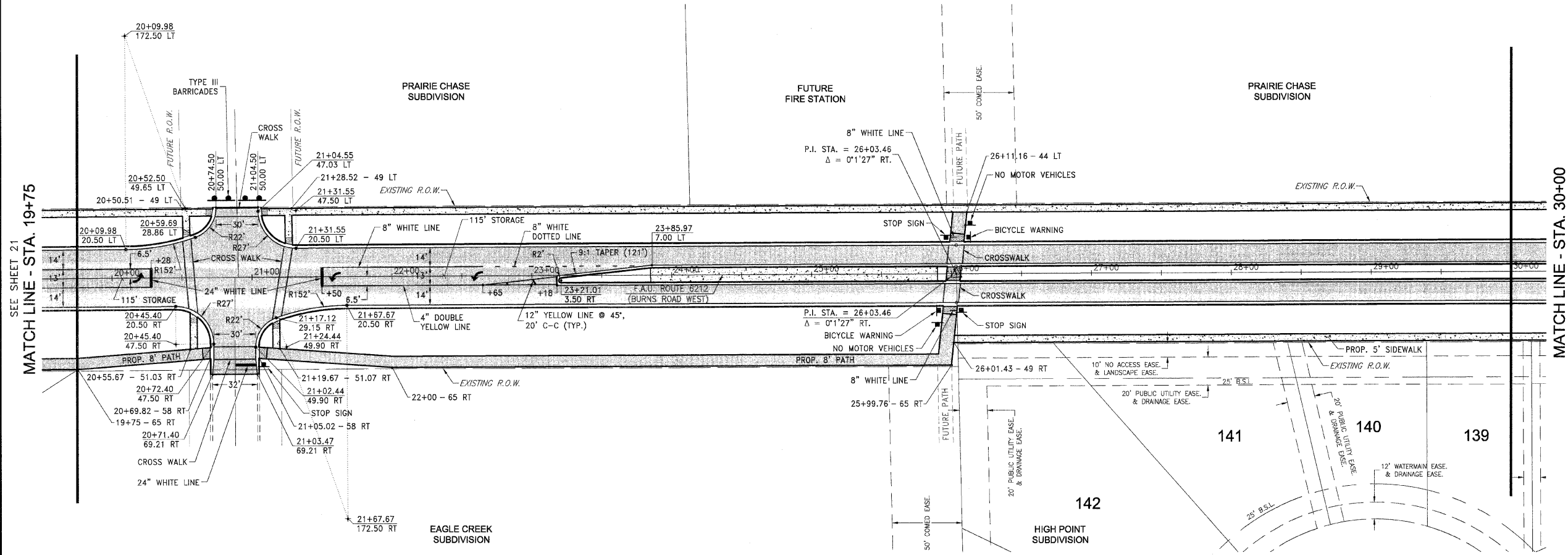
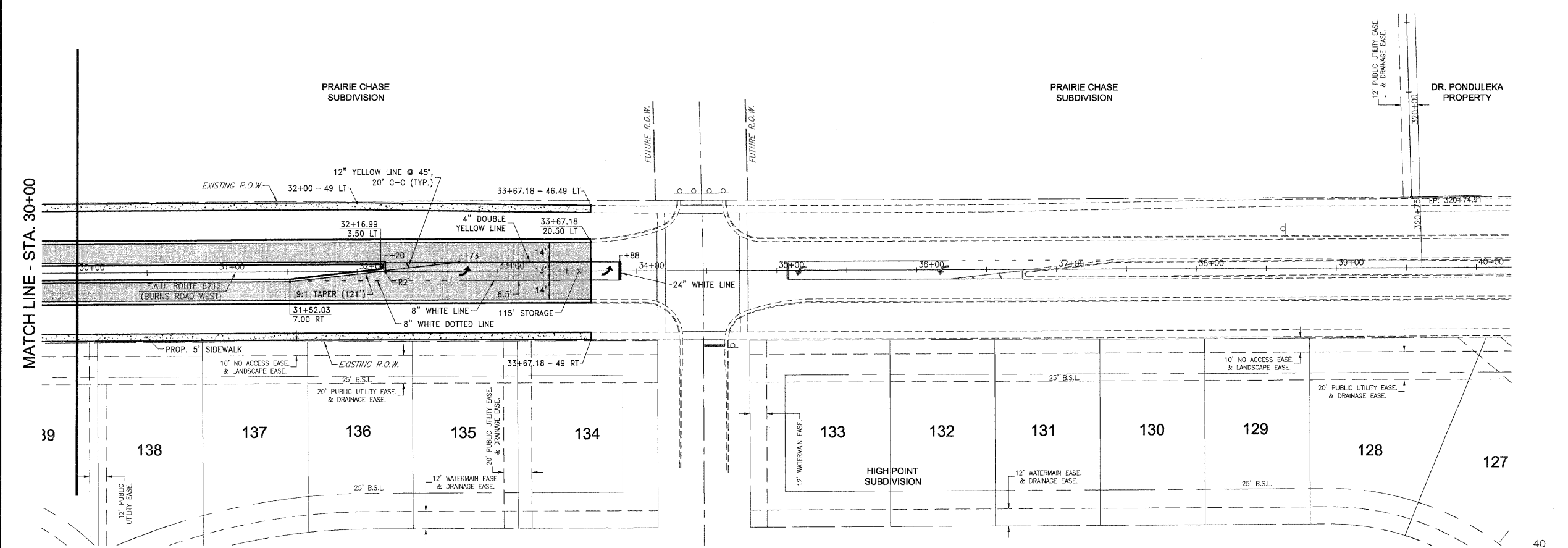


SEE SHEET 21  
MATCH LINE - STA. 19+75

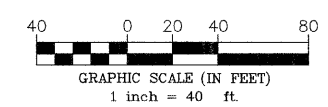
MATCH LINE - STA. 30+00



MATCH LINE - STA. 30+00



\*NOTE: ALL CROSSWALKS SHALL BE LADDERS WITH 8" WHITE SIDEBARS AND 12" WHITE RUNGS AT 3' SPACING.



FAU DIST.	SECTION	COUNTY	TOTAL SHEETS	SHEET NO.
*	**	KANKAKEE	36	22

CONTRACT NO. 87315  
FED. ROAD DIST. NO. ILLINOIS FED. AID PROJECT  
\* BURNS ROAD WEST - FAU 6212  
\*\* 03-00058-01-FP

**TYSON ENGINEERING, INC.**  
CONSULTING CIVIL ENGINEERS  
LAND SURVEYORS  
DESIGN FIRM LICENSE #154-001136  
367 SOUTH SCHUYLER AVENUE  
KANKAKEE, ILLINOIS 60901  
PHONE (815) 932-7406

This document and the ideas and designs incorporated herein, as an instrument of professional service, is the property of Tyson Engineering Inc. and is not to be used in whole or in part, for any other project without written authorization of Tyson Engineering Inc.  
Do not scale drawings. Use dimensions only.  
Contractor shall be responsible for verifying all dimensions.  
Information hereon and herein is confidential.

REVISIONS			
NO.	DATE	BY	DESCRIPTION

STRIPING AND SIGNAGE PLAN

PROJECT:  
**PROPOSED IMPROVEMENTS FOR  
BURNS ROAD WEST**  
FROM CAREER CENTER ROAD  
TO BURNING BUSH DRIVE

SECTION  
03-00058-01-FP

DATE:	3/23/12	JOB NO.	E05055
SCALE:	HORZ.: 1"=40' VERT.: N/A	FILE NO.	
DRAWN BY:	MRG	SHEET	22
CHECKED BY:	SRM		36