

**STATE OF ILLINOIS**  
**DEPARTMENT OF TRANSPORTATION**  
**DIVISION OF HIGHWAYS**  
**PLANS FOR PROPOSED**  
**HIGHWAY BRIDGE PROGRAM**

**T.R. 55B**  
**MARTINTON ROAD DISTRICT**  
**SECTION 07-16121-00-BR**  
**IROQUOIS COUNTY**  
**C-93-100-11**  
**PROJECT NO. BROS-075(145)**

ROUTE NO.	SECTION	COUNTY	TOTAL SHEETS	SHEET NO.
T.R. 55B	07-16121-00-BR	IROQUOIS	33	1
ROAD DIST.	ILLINOIS	MARTINTON		

CONTRACT NO. **87487**



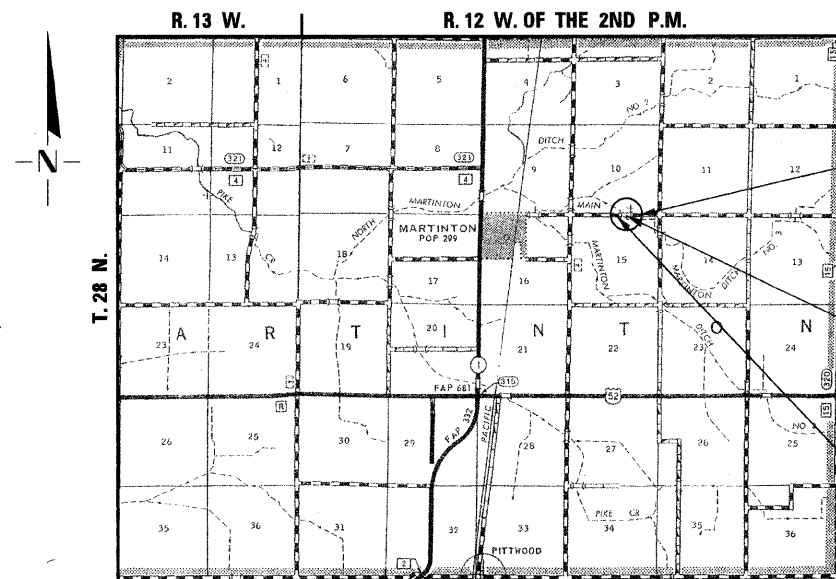
INDEX OF SHEETS	
SHEET NO.	TITLE
1.	COVER SHEET
2.	SUMMARY OF QUANTITIES, GENERAL NOTES & TYPICAL SECTIONS
3.	PLAN AND PROFILE SHEET
4.	SHOULDER AND GUARDRAIL DETAILS
5.-25.	BRIDGE PLANS
26.-33.	STATION CROSS SECTIONS

**STANDARDS**

000001-06	STANDARD SYMBOLS, ABBREVIATIONS AND PATTERNS
280001-06	TEMPORARY EROSION CONTROL SYSTEMS
515001-03	NAME PLATE FOR BRIDGES
601101-01	CONCRETE HEADWALL FOR PIPE DRAIN
631032-07	TRAFFIC BARRIER TERMINAL, TYPE 6A
635006-03	REFLECTOR AND TERMINAL MARKER PLACEMENT
701901-02	TRAFFIC CONTROL DEVICES
720011-01	METAL POSTS FOR SIGNS, MARKERS AND DELINEATORS
728001-01	TELESCOPING STEEL SIGN SUPPORT
729001-01	APPLICATIONS OF TYPES A AND B METAL POSTS (FOR SIGNS AND MARKERS)
BLR 21-9	TYPICAL APPLICATION OF TRAFFIC CONTROL DEVICES FOR CONSTRUCTION ON RURAL LOCAL HIGHWAYS

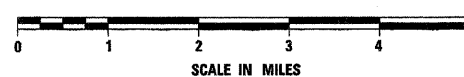
**SCALES**

PLAN	0' 50' 100'
PROFILE HORIZ.	0' 50' 100'
PROFILE VERT.	0' 5' 10'
CROSS SECTIONS	0' 5' 10'



**LOCATION PLAN**

GROSS LENGTH OF SECTION = 1000 FEET = 0.189 MILES  
 NET LENGTH OF SECTION = 1000 FEET = 0.189 MILES



IMPROVEMENT ENDS  
STA. 95+00

STA. 90+20 - SPECIAL BRIDGE DESIGN  
 THREE SPAN CONTINUOUS COMPOSITE  
 STEEL BEAM BRIDGE WITH INTEGRAL  
 ABUTMENTS AND PILE BENT PIERS;  
 SPANS @ 41'-3", 61'-0", 41'-3"; 45 SKEW;  
 30'-6" O.-O. DECK; 147'-0 1/2" BK.-BK. ABUTS.  
 EXISTING S.N. 038-4502  
 PROPOSED S.N. 038-4558

IMPROVEMENT BEGINS  
STA. 85+00



Gary J. Cartwright 3-5-12  
 ILLINOIS PROFESSIONAL NO. 43408  
 EXPIRES 11-30-13

CLASSIFICATION: LOCAL ROAD (NON-URBAN)  
 DESIGN VOLUME: 400-750 ADT  
 CURRENT ADT: 700 (2010)  
 DESIGN SPEED: 50 M.P.H.

TOLL FREE JOINT UTILITY LOCATING  
 INFORMATION FOR EXCAVATORS (J.U.L.I.E.)  
 TELEPHONE NUMBER 1-800-892-0123

PASSED	3-9	2012
	<i>Don DeWitt</i>	ROAD DISTRICT COMMISSIONER
APPROVED	March 6	2012
	<i>Don DeWitt</i>	COUNTY ENGINEER
PASSED	MARCH 26	2012
	<i>Don DeWitt</i>	DISTRICT THREE IMPLEMENTATION ENGINEER
RELEASED FOR BID BASED ON LIMITED REVIEW	MARCH 26	2012
	<i>Don DeWitt</i>	DEPUTY DIRECTOR OF HIGHWAYS, REGION TWO ENGINEER
STATE OF ILLINOIS DEPARTMENT OF TRANSPORTATION		

CONTRACT NO. **87487**

4440 ASH GROVE  
 SPRINGFIELD, IL 62711  
 (217) 793-8800  
 www.fehr-graham.com

**FEHR-GRAHAM & ASSOCIATES, LLC**  
 ENGINEERING AND SCIENCE CONSULTANTS  
 PEPPER, IL, INDIANAPOLIS, IN, CHICAGO, IL, SPRINGFIELD, IL