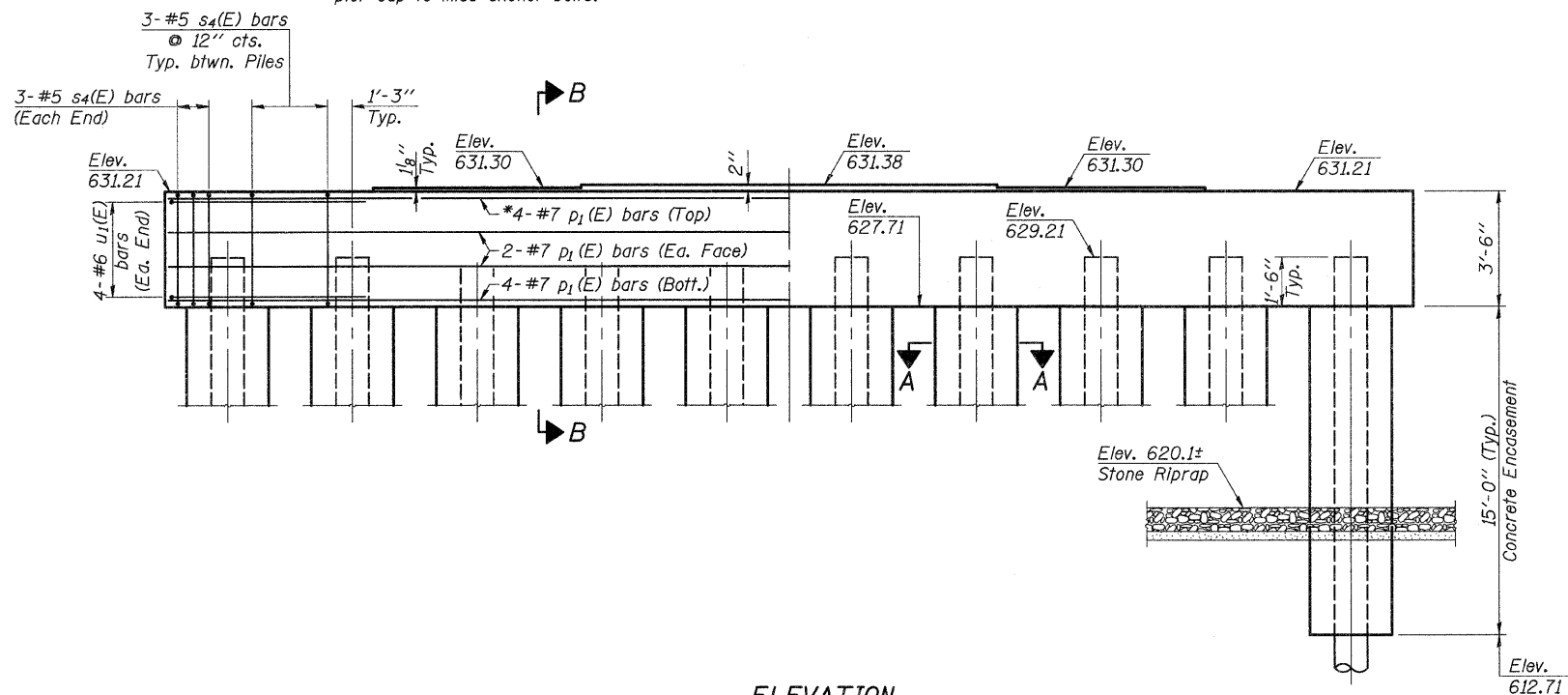
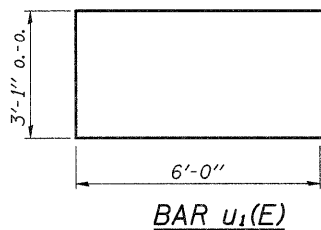


PLAN

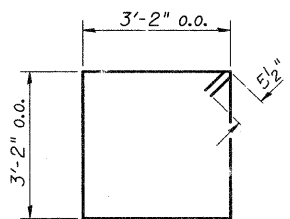
*Note: Space p₁(E) bars in top of pier cap to miss anchor bolts.



ELEVATION
(Looking East)

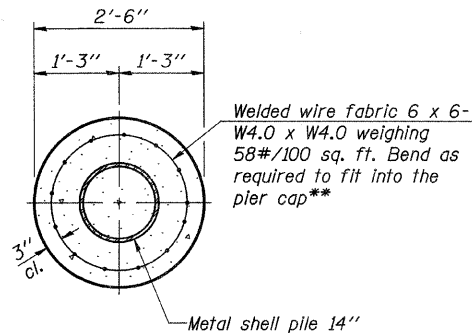


BAR u₁(E)

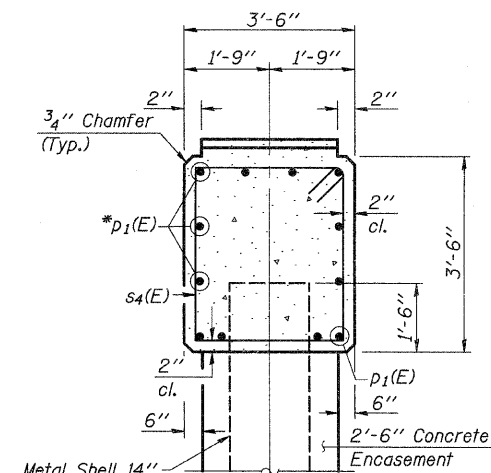


BAR s₄(E)

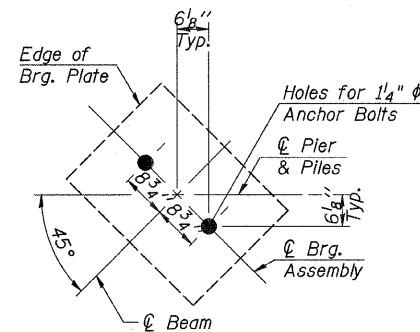
**The cost of Reinforcement is incidental to the cost of "Concrete Encasement". Extend Reinforcement 2'-0" into cap.



SECTION A-A
PILE ENCASEMENT DETAIL



SECTION B-B



ANCHOR BOLT
LAYOUT

BILL OF MATERIAL - PIER 2

BAR	NO.	SIZE	LENGTH	SHAPE
p ₁ (E)	12	#7	44'-8"	—
s ₄ (E)	33	#5	13'-7"	□
u ₁ (E)	8	#6	15'-1"	□
Concrete Structures			Cu. Yd.	20.9
Reinforcement Bars, Epoxy Coated			Pound	1,740
Furnishing Metal Shell Piles, 14" x 0.250"			Foot	459
Driving Piles			Foot	459
Test Pile, Metal Shells			Each	1
Concrete Encasement			Cu. Yd.	27.3

See Sheet 17 of 21 for Pile Details.

Reinforcement Bars designated (E) shall be epoxy coated.

PILE DATA

(See Special Provisions)

Type: Metal Shell - 14" Dia. x 0.250" walls
 No. Required: *10
 Nominal Required Bearing: 240 kips
 Factored Resistance Available: 130 kips
 Est. Length: 51 Foot/Pile

*Includes 1 Test Pile to be driven in a permanent location.

The test piles shall be driven to 110 percent of the Nominal Required Bearing Indicated above.

PIER 2
S.N. 038-4558

DESIGNED -	A.L.S.
CHECKED -	A.R.K.
DRAWN -	S.A.P.
CHECKED -	A.L.S. & A.R.K.

<p>FEHR-GRAHAM & ASSOCIATES, LLC ENGINEERING AND SCIENCE CONSULTANTS FREEPORT, IL ROCKFORD, IL ROCHELLE, IL MONROE, WI SPRINGFIELD, IL</p>	TWP. RTE.	SECTION	COUNTY	TOTAL SHEETS	SHEET NO.
	55B	07-16121-00-BR	IROQUOIS	33	20
4440 ASH GROVE SPRINGFIELD, IL 62711 (217)-793-8600 www.fehr-graham.com			MARTINTON ROAD DIST. ILLINOIS	CONTRACT NO. 87487 F.A. PROJ. BROS-075(145)	