

F.A. RTE.	SECTION	COUNTY	TOTAL SHEETS	SHEET NO.
*	11-00007-00-WR	**	96	1
FED. ROAD DIST. NO. -		ILLINOIS	CONTRACT NO. 87520	

* FAS 301/FAU 383
 ** GRUNDY AND WILL

STATE OF ILLINOIS
 DEPARTMENT OF TRANSPORTATION
 DIVISION OF HIGHWAYS

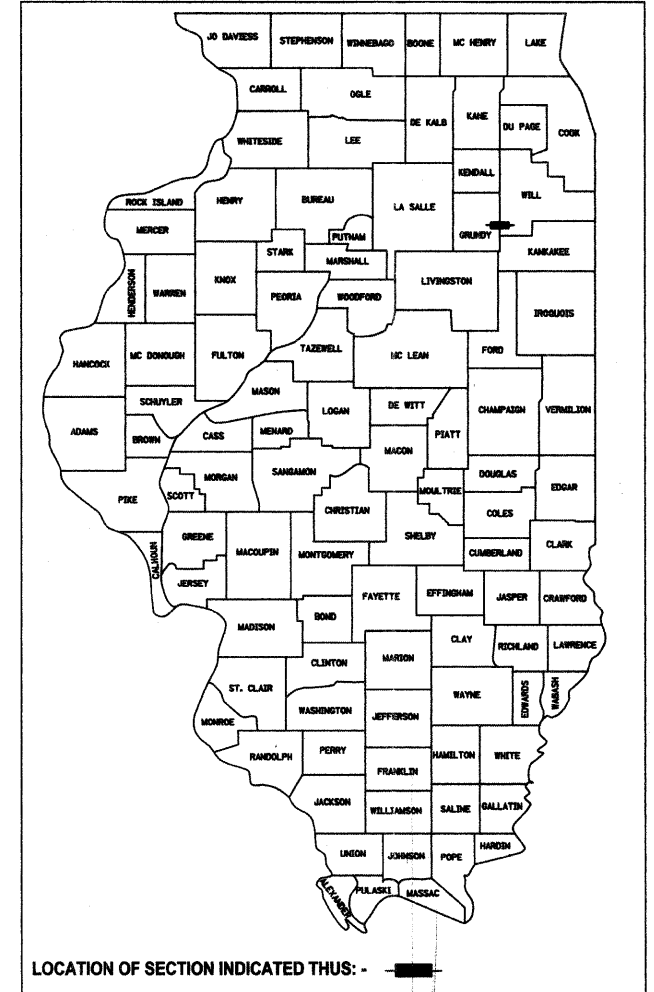
**PLANS FOR PROPOSED
 FEDERAL AID HIGHWAY**
 STATE TRANSPORTATION URBAN FUNDING
 VILLAGE OF DIAMOND
 FAS 301 / FAU 383 (IL 113)
 SECTION 11-00007-00-WR
 PROJECT M-9003 (982)
 GRUNDY AND WILL COUNTIES
 C-93-077-12

INDEX OF SHEETS

1. COVER SHEET
2. GENERAL NOTES
- 3.-5. TYPICAL SECTIONS
- 6.-8. SUMMARY OF QUANTITIES
- 9.-11. SCHEDULE OF QUANTITIES
- 12.-19. REMOVAL PLANS
- 20.-27. PLAN AND PROFILE
- 28.-31. STAGE CONSTRUCTION AND TRAFFIC CONTROL PLANS
- 32.-39. EROSION AND SEDIMENT CONTROL PLANS
- 40.-41. WATER MAIN PLANS
- 42.-44. INTERSECTION DETAILS
- 45.-52. PAVEMENT MARKING AND SIGN PLANS
- 53.-55. LIGHTING PLANS
- 56.-58. BOX CULVERT DETAILS
- 59.-63. DETAILS
- 64.-96. CROSS SECTIONS

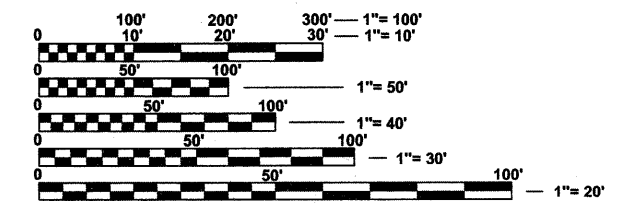
HIGHWAY STANDARDS

- 000001-06 STANDARD SYMBOLS, ABBREVIATIONS AND PATTERNS
- 280001-06 TEMPORARY EROSION CONTROL SYSTEMS
- 424001-06 PERPENDICULAR CURB RAMPS FOR SIDEWALKS
- 442201-03 CLASS C AND D PATCHES
- 542301-03 PRECAST REINFORCED CONCRETE FLARED END SECTION
- 602301-03 INLET, TYPE A
- 602306-03 INLET, TYPE B
- 602401-03 MANHOLE, TYPE A
- 602801-02 PRECAST REINFORCED CONCRETE FLAT SLAB TOP
- 602701-02 MANHOLE STEPS
- 604001-03 FRAME AND LIDS, TYPE 1
- 604006-04 FRAME AND GRATE, TYPE 3
- 604036-02 GRATE, TYPE 8
- 606001-04 CONCRETE CURB TYPE B AND COMBINATION CONCRETE CURB AND GUTTER
- 606006-02 OUTLETS FOR CONCRETE CURB AND GUTTER TYPE B-6.24 (B-15.60)
- 606301-04 PC CONCRETE ISLANDS AND MEDIANS
- 667101-01 PERMANENT SURVEY MARKERS
- 701001-02 OFF-ROAD OPERATIONS, 2L, 2W, MORE THAN 15' (4.5 M) AWAY
- 701006-03 OFF-ROAD OPERATIONS, 2L, 2W, 15' (4.5 M) TO 24" (600 MM) FROM PAVEMENT EDGE
- 701011-02 OFF-ROAD MOVING OPERATIONS, 2L, 2W, DAY ONLY
- 701201-04 LANE CLOSURE, 2L, 2W, DAY ONLY, FOR SPEEDS > 45 MPH
- 701301-04 LANE CLOSURE, 2L, 2W, SHORT TIME OPERATIONS
- 701306-03 LANE CLOSURE, 2L, 2W, SLOW MOVING OPERATIONS DAY ONLY, FOR SPEEDS > 45 MPH
- 701311-03 LANE CLOSURE, 2L, 2W, MOVING OPERATIONS - DAY ONLY
- 701326-04 LANE CLOSURE, 2L, 2W, PAVEMENT WIDENING, FOR SPEEDS > 45 MPH
- 701901-02 TRAFFIC CONTROL DEVICES
- 720001-01 SIGN PANEL MOUNTING DETAILS
- 720006-03 SIGN PANEL ERECTION DETAILS
- 780001-03 TYPICAL PAVEMENT MARKINGS
- 781001-03 TYPICAL APPLICATIONS RAISED REFLECTIVE PAVEMENT MARKERS
- 782001 PRISMATIC CURB REFLECTORS
- 836001-01 LIGHT POLE FOUNDATION
- BLR21-9 TYPICAL APPLICATION OF TRAFFIC CONTROL DEVICES FOR CONSTRUCTION ON RURAL LOCAL HIGHWAYS
- BLR22-7 TYPICAL APPLICATION OF TRAFFIC CONTROL DEVICES FOR RURAL LOCAL HIGHWAYS (TWO-LANE TWO WAY RURAL TRAFFIC) (ROAD CLOSED TO THRU TRAFFIC)



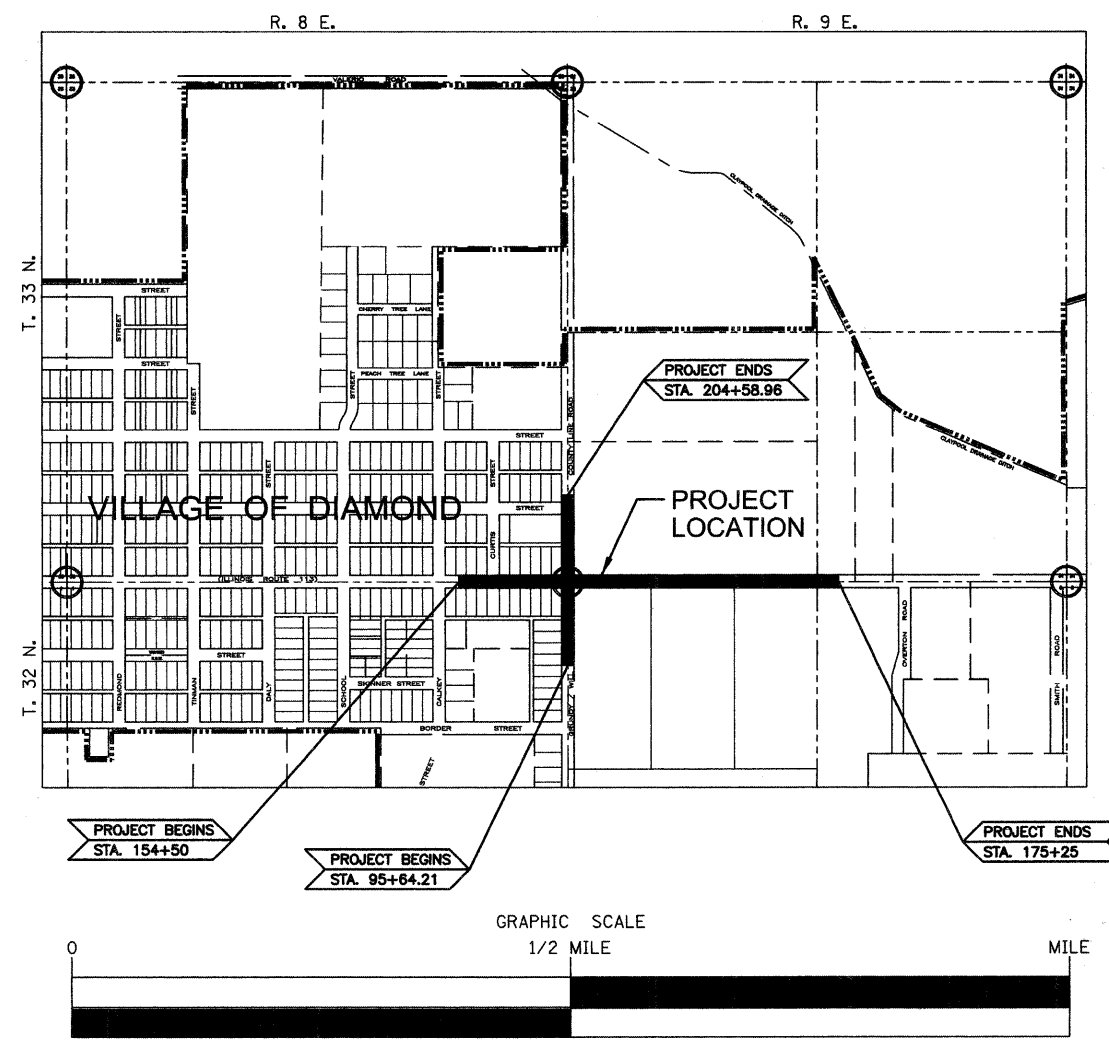
FAS 301/FAU 383 (IL 113)
 FUNCTION CLASSIFICATION: MAJOR COLLECTOR
 ADT= 12653 (2012)
 POSTED SPEED 35 MPH WEST/45 MPH EAST

WILL ROAD
 FUNCTION CLASSIFICATION: LOCAL ROAD
 ADT= 1359 (2012)
 POSTED SPEED 35 MPH SOUTH/30 MPH NORTH

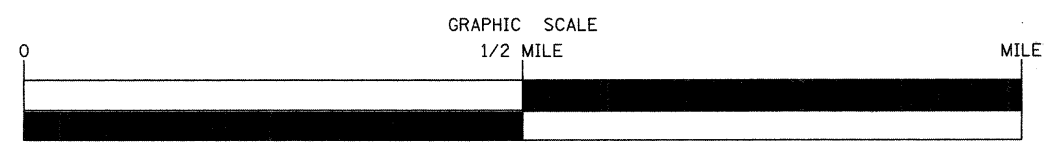


FULL SIZE PLANS HAVE BEEN PREPARED USING STANDARD ENGINEERING SCALES. REDUCED SIZED PLANS WILL NOT CONFORM TO STANDARD SCALES. IN MAKING MEASUREMENTS ON REDUCED PLANS, THE ABOVE SCALES MAY BE USED.

J.U.L.I.E.
 JOINT UTILITY LOCATION INFORMATION FOR EXCAVATION
 1-800-892-0123
 OR 811



PROJECT BEGINS STA. 154+50
 PROJECT BEGINS STA. 95+64.21
 PROJECT ENDS STA. 175+25
 PROJECT ENDS STA. 204+58.96



NET LENGTH OF SECTION -- 2075' (0.393 MILES)
 GROSS LENGTH OF SECTION -- 2075' (0.393 MILES)

4/11/12
 date
 JAMES K. CLINARD
 LICENSED PROFESSIONAL ENGINEER
 NO. 062-041793
 STATE OF ILLINOIS
 expires 11-30-2013
 signature
 PROFESSIONAL DESIGN FIRM
 LICENSE NO. 184-001717

STATE OF ILLINOIS
 DEPARTMENT OF TRANSPORTATION
 DIVISION OF HIGHWAYS

SUBMITTED April 11 20 12
 date
 PRESIDENT, VILLAGE OF DIAMOND

PASSED April 12 20 12
 date
 DISTRICT 3 IMPLEMENTATION ENGINEER

RELEASED FOR BID BASED ON LIMITED REVIEW April 12 20 12
 date
 DEPUTY DIRECTOR OF HIGHWAYS, REGION 2 ENGINEER

CONTRACT NO. 87520

JAMES K. CLINARD
 CHAMBLIN & ASSOCIATES
 815.223.3344