

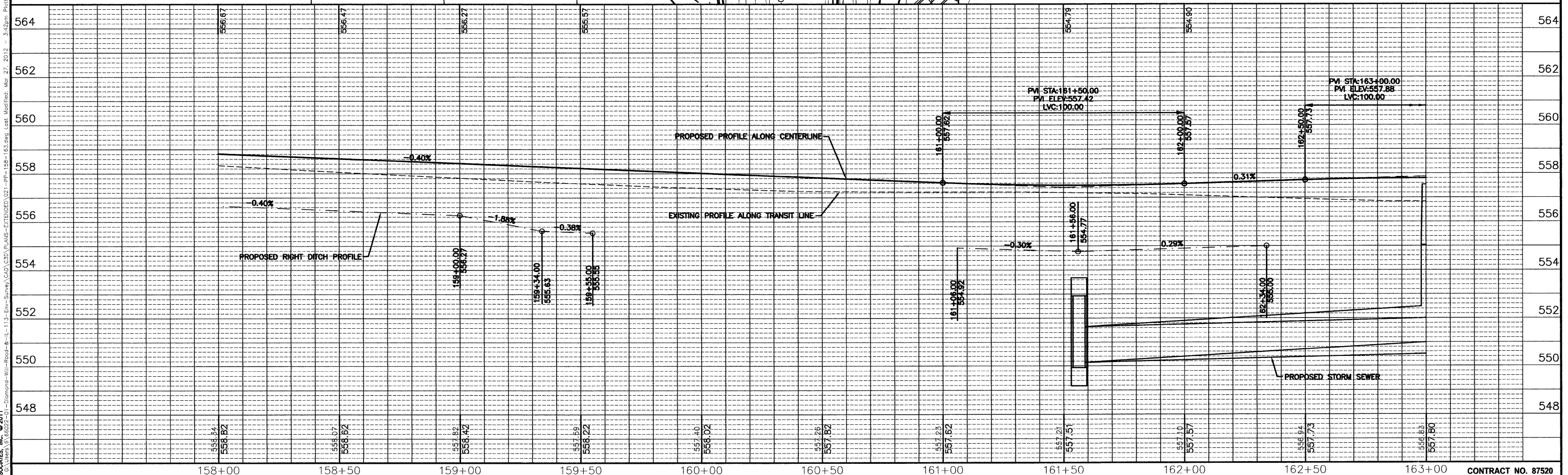
CONSTRUCT DRAIN FOR AGGREGATE BASE AT INLETS LEFT & RIGHT OF STA. 99+16.37 SEE DETAIL ON SHEET 61

SEE SHEETS 10 & 11 FOR DRAINAGE SCHEDULES

**BENCHMARKS:**  
 CHISELED "X" IN LIGHT POLE BASE AT NORTHWEST CORNER OF IL 113 AND CURTIS ELEV. = 560.20  
 SOUTHWEST BOLT ON FIRE HYDRANT 250' ± EAST OF WILL ROAD ON NORTH SIDE OF IL 113 ELEV. = 556.76

SEE SHEETS 36 FOR INTERSECTION DETAILS

SEE SHEETS 56-58 FOR PRECAST CONCRETE BOX CULVERT DETAILS



DRAWN BY: NV	REVISIONS
CHECKED BY: JKC	LEVEL
DATE: 02/12	BY
	DATE
	DESCRIPTION

**CHAMLIN ASSOCIATES**  
 PERU MORRIS ILLINOIS

FAS 301 / FAU 383  
 SECTION 11-0007-00-WR  
 VILLAGE OF DIAMOND  
 GRUNDY AND WILL COUNTIES

PLAN AND PROFILE - IL 113  
 STA. 158+00 TO STA. 163+00

**CONSTRUCTION PLANS**

CURRENT AS OF: 02/12	SHEET 21
SCALE: AS NOTED	OF 96
FILE NO.: 66022.01Y-	

CHAMLIN & ASSOCIATES, INC. © 2011  
 Drawing Name: G:\Users\NV\OneDrive\Diamond-Will-Road-IL-113-Env-Survey\CAD\FAS-EXTENDED\21-FP-158-163.dwg Last Modified: Mar 27, 2012 - 3:42pm Plotted on: Apr 09, 2012 - 3:52pm by narama