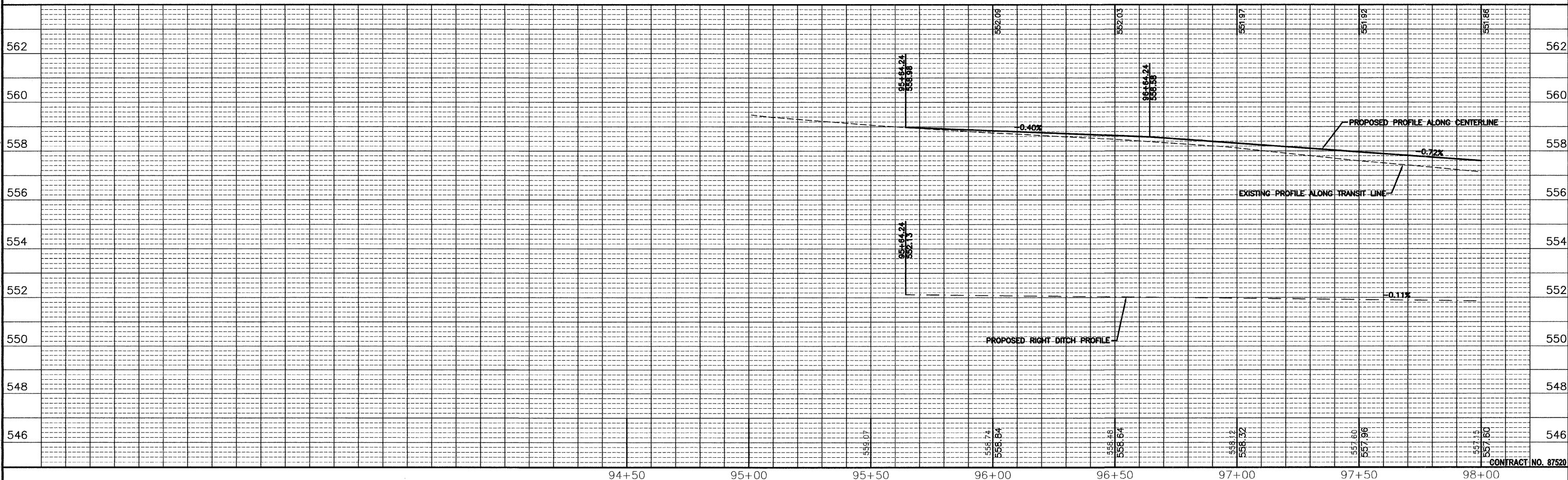


BENCHMARKS:
 CHISELED "X" IN LIGHT POLE BASE
 AT NORTHWEST CORNER OF IL 113
 AND CURTIS
 ELEV. = 560.20
 SOUTHWEST BOLT ON FIRE HYDRANT
 250'± EAST OF WILL ROAD ON NORTH
 SIDE OF IL 113
 ELEV. = 556.76

SEE SHEETS 10 & 11
 FOR DRAINAGE
 SCHEDULES



CHAMLIN & ASSOCIATES, INC. © 2011
 Drawing Name: G:\Users\GJ\66022-01 -Diamond-Will-Road -& IL-113-Env-Survey\CAD\PLAN-EXTENDED\015 -P1-92-98.dwg Last Modified: Mar 27, 2012 - 3:05pm. Plotted on: Mar 29, 2012 - 8:32am by nmcq

DRAWN BY: NV	REVISIONS			
CHECKED BY: JKC	LEVEL	BY	DATE	DESCRIPTION
DATE: 02/12				

CHAMLIN ASSOCIATES
 PERU MORRIS ILLINOIS

FAS 301 / FAU 383
 SECTION 11-0007-00-WR
 VILLAGE OF DIAMOND
 GRUNDY AND WILL COUNTIES

PLAN AND PROFILE - WILL ROAD
 STA. 92+00 TO STA. 98+00

CONSTRUCTION PLANS

CURRENT AS OF: 02/12	
SCALE: AS NOTED	SHEET 25
FILE NO.: 66022.01Y-	OF 96

CONTRACT NO. 87520