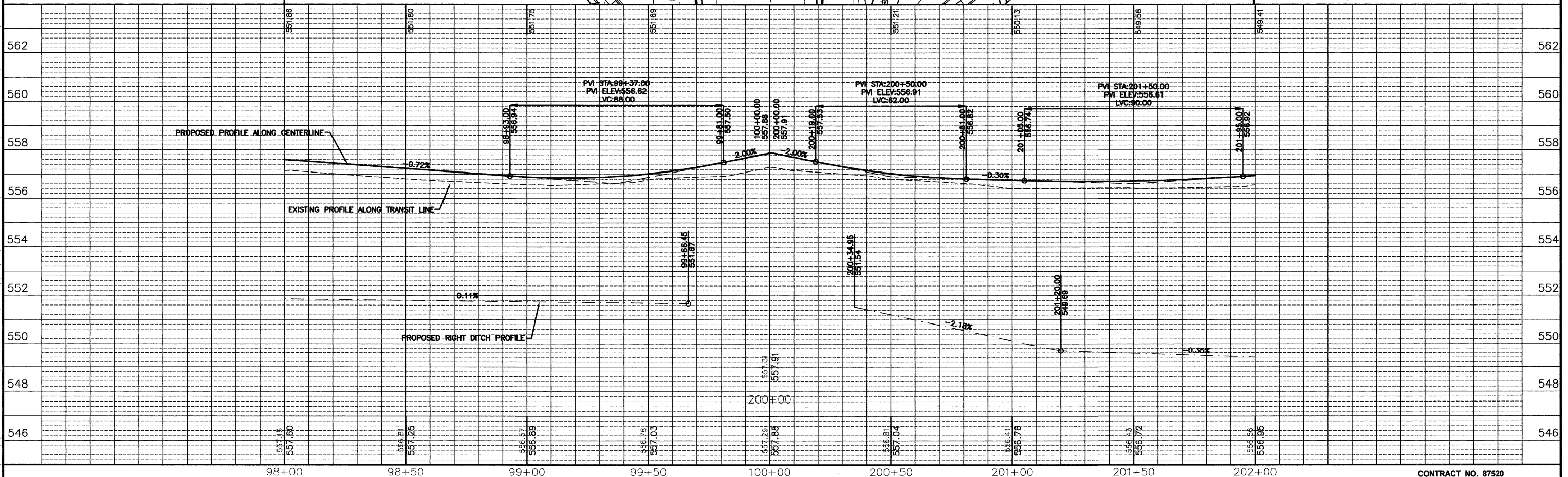
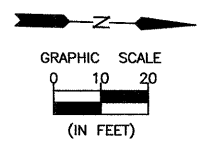
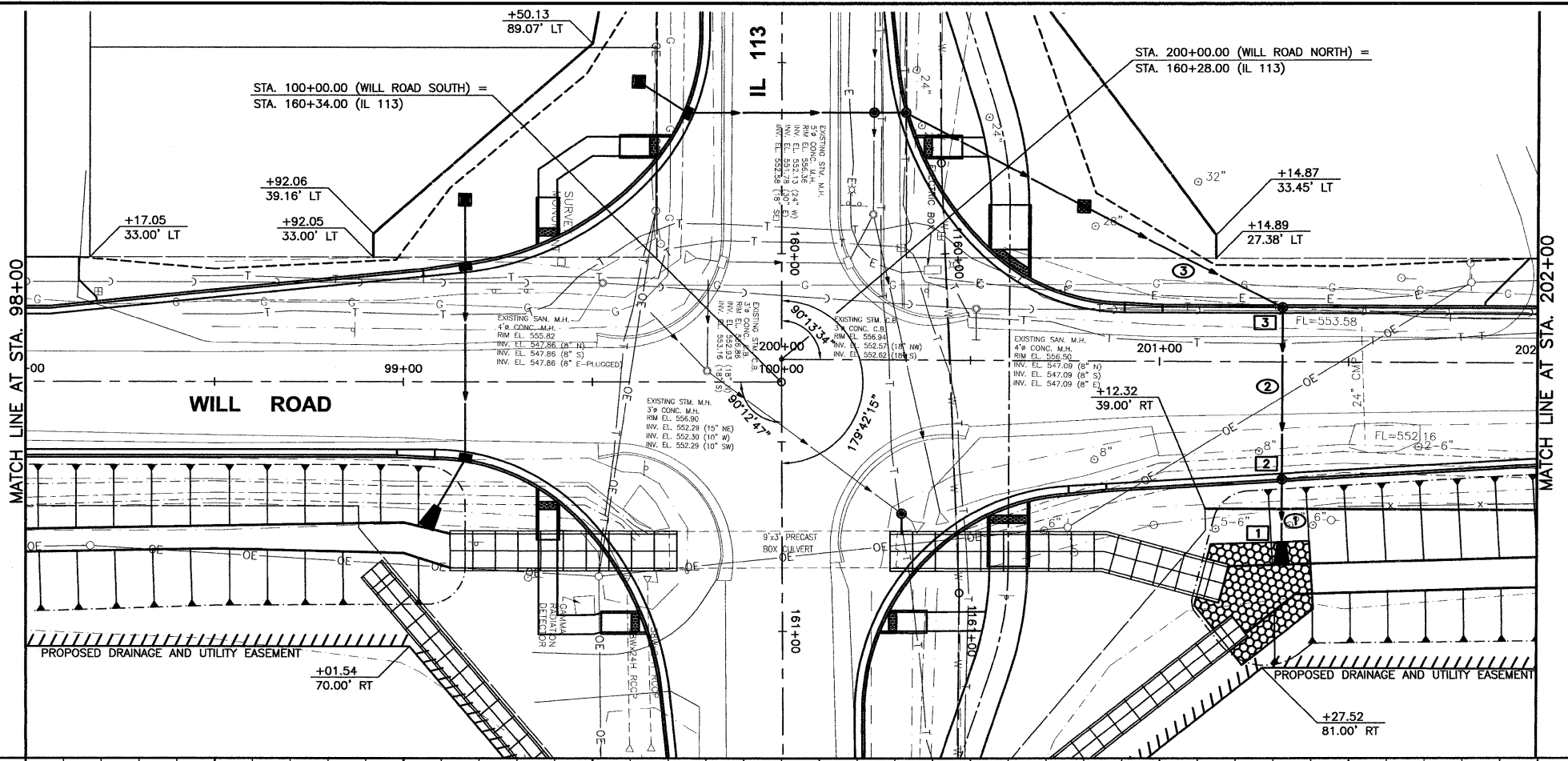


CHAMLIN & ASSOCIATES, INC. © 2011
 Drawing Name: C:\Users\jva\OneDrive\Documents\Will-Road-IL-113-Env-Survey\CAD\PLANS-EXTENDED\026-PP-98-202.dwg Last Modified: Mar 27, 2012 - 3:09pm Plotted on: Mar 28, 2012 - 8:34am by nandq



DRAWN BY: NV	REVISIONS			
CHECKED BY: JKC	LEVEL	BY	DATE	DESCRIPTION
DATE: 02/12				

CHAMLIN & ASSOCIATES
 PERU MORRIS ILLINOIS

FAS 301 / FAU 383
 SECTION 11-0007-00-WR
 VILLAGE OF DIAMOND
 GRUNDY AND WILL COUNTIES

PLAN AND PROFILE - WILL ROAD
 STA. 98+00 TO STA. 202+00

CONSTRUCTION PLANS
 CONTRACT NO. 87520
 CURRENT AS OF: 02/12
 SCALE: AS NOTED SHEET 26
 FILE NO.: 66022.01 Y- OF 96