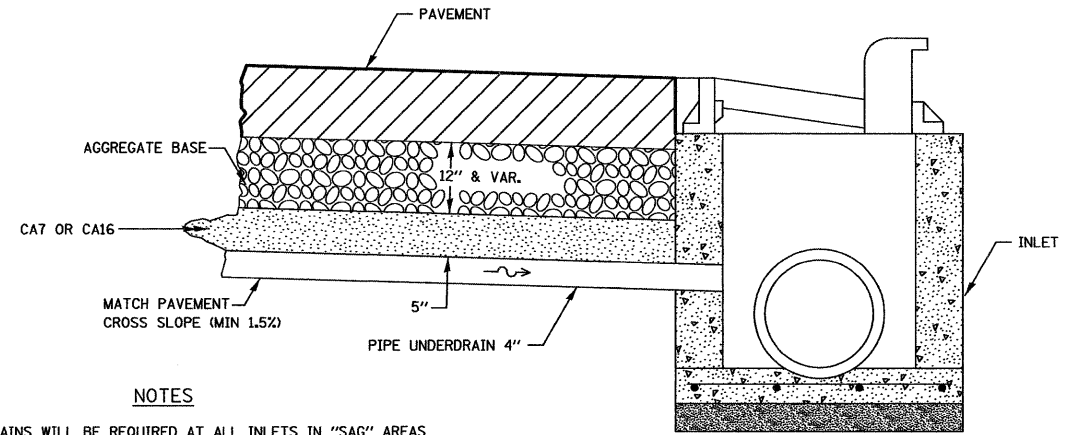


REINFORCEMENT SHALL NOT BE PAID FOR SEPARATELY BUT WILL BE INCLUDED IN THE CONTRACT UNIT PRICE FOR CC&G.

**REINFORCEMENT DETAIL
FOR
COMBINATION CONCRETE
CURB AND GUTTER
TYPE B-6.24**



NOTES

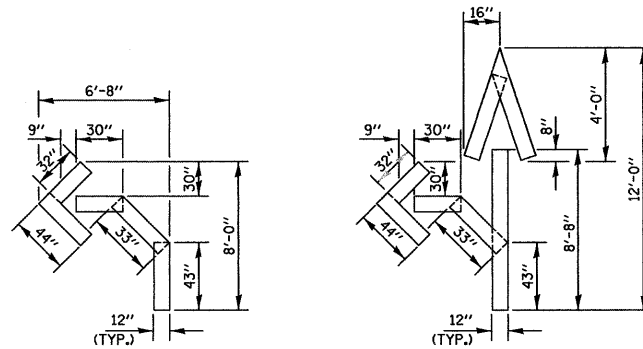
DRAINS WILL BE REQUIRED AT ALL INLETS IN "SAG" AREAS AND AS INDICATED IN THE PLANS.

THIS WORK SHALL BE COMPLETED ACCORDING TO SECTION 601 OF THE STANDARD SPECIFICATIONS.

THIS WORK WILL BE PAID FOR AT THE CONTRACT UNIT PRICE PER FOOT FOR PIPE UNDERDRAINS OF THE DIAMETER SPECIFIED WHICH PRICE SHALL INCLUDE THE CA7 OR CA16 AND THE CONNECTION TO THE INLET.

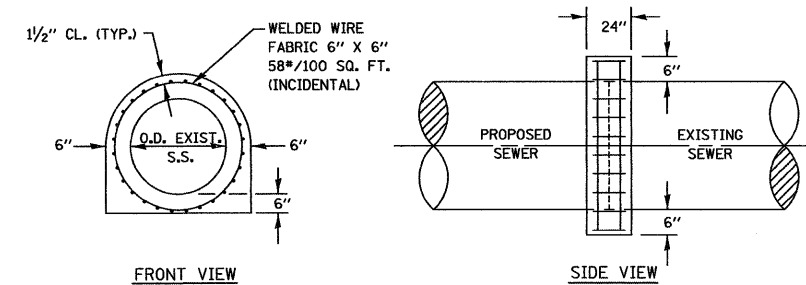
**DRAIN FOR AGGREGATE
BASES IN URBAN AREAS**

601-4



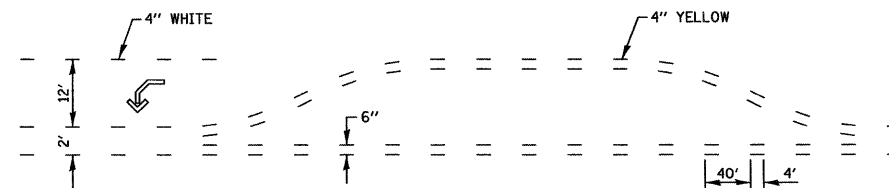
QUANTITY
12" LINE = 16 LIN. FT.
OR 4" LINE = 48 LIN. FT.

QUANTITY
12" LINE = 29 LIN. FT.
OR 4" LINE = 87 LIN. FT.



CONCRETE COLLAR FOR SEWER CONNECTION

550-1



**SHORT-TERM PAVEMENT MARKING
FOR MEDIANS AND ARROWS**

703-1

CHAMBLIN & ASSOCIATES, INC. © 2011 Drawing Name: G:\Users\GAMORRIS\OneDrive\Projects\11-00007-00-VR\11-00007-00-VR-113-Env-Survey\CAD\PLANS-EXTENDED\C66-DETS.dwg Last Modified: Feb 06, 2012 - 10:18am Plotted on: Mar 28, 2012 - 11:18pm by nancq

DRAWN BY: NV	REVISIONS			
CHECKED BY: JKC	LEVEL	BY	DATE	DESCRIPTION
DATE: 02/12				

CHAMBLIN & ASSOCIATES
PERU MORRIS ILLINOIS

FAS 301 / FAU 383
SECTION 11-00007-00-WR
VILLAGE OF DIAMOND
GRUNDY AND WILL COUNTIES

DETAILS

CONSTRUCTION
PLANS

CONTRACT NO. 87520	
CURRENT AS OF: 02/12	
SCALE: AS NOTED	SHEET 61
FILE NO.: 66022.01 Y-	OF 96