

CONTROL POINT #86
 NORTHING = 1549826.66
 EASTING = 2285476.41
 STA. 97+32.41,
 OS 16.11' LT.

STA 97+17.75
 NORTHING = 1549815.93
 EASTING = 2285495.50

PROP. CURVE KNOX04
 PI STA. = 98+60.13
 $\Delta = 23^\circ 49' 20''$ (RT)
 $D = 8^\circ 29' 18''$
 $R = 675.00'$
 $T = 142.38'$
 $L = 280.65'$
 $E = 14.85'$
 $e = \text{---}$
 T.R. = ---
 S.E. RUN = ---
 P.C. STA. = 97+17.75
 P.T. STA. = 99+98.40

STA. 112+35.58 (TR176) =
 STA. 500+00.00 (OLD WAGON RD.)
 NORTHING = 1551313.12
 EASTING = 2285698.65

CONTROL POINT #90
 NORTHING = 1551547.12
 EASTING = 2285647.86
 ELEV. = 666.84

BENCHMARK #403
 NAIL IN PP
 ELEV. = 663.94

BENCHMARK #401
 NAIL IN POST
 ELEV. = 642.03

STA. 120+21.37
 NORTHING = 1552094.44
 EASTING = 2285144.16

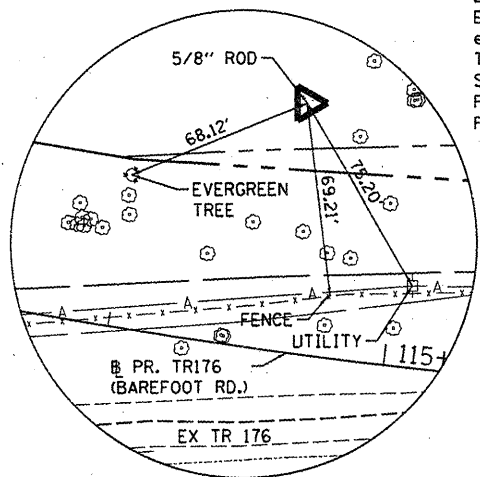
CONTROL POINT #3
 NORTHING = 1552154.30
 EASTING = 2285759.41
 ELEV. = 695.64

NORTHING = 1551637.38
 EASTING = 2285755.29
 EXISTING R.O.W.

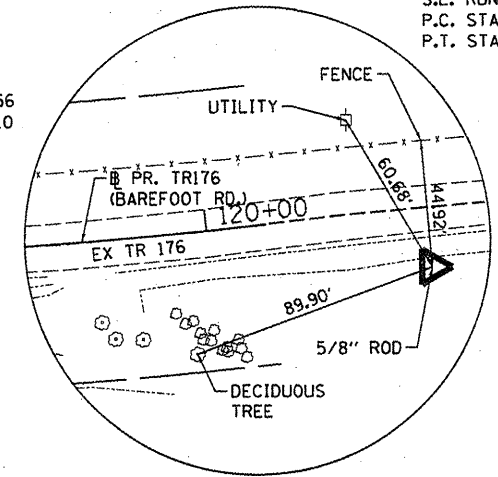
BENCHMARK #402
 NAIL IN PP
 ELEV. = 631.51

PROP. CURVE KNOX02
 PI STA. = 115+64.75
 $\Delta = 9^\circ 50' 30''$ (LT)
 $D = 2^\circ 51' 53''$
 $R = 2,000.00'$
 $T = 172.19'$
 $L = 343.54'$
 $E = 7.40'$
 $e = \text{---}$
 T.R. = ---
 S.E. RUN = ---
 P.C. STA. = 113+92.56
 P.T. STA. = 117+36.10

PROP. CURVE KNOX03
 PI STA. = 119+13.42
 $\Delta = 6^\circ 11' 28''$ (LT)
 $D = 2^\circ 51' 53''$
 $R = 2,000.00'$
 $T = 108.16'$
 $E = 2.92'$
 $e = \text{---}$
 T.R. = ---
 S.E. RUN = ---
 P.C. STA. = 118+05.26
 P.T. STA. = 120+21.37

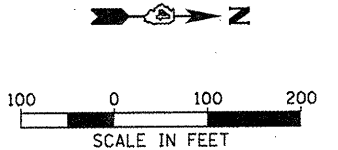


CONTROL POINT #90
 SET 5/8" IRON ROD



CONTROL POINT #3
 SET 5/8" IRON ROD

STA. 505+80.37
 NORTHING = 1551186.19
 EASTING = 2286264.97



FILE NAME =	USER NAME = dows00078	DESIGNED MGD	REVISED -
c:\pwise_work\do_not_delete\dms27389\c-	ties.dgn	DRAWN DLC	REVISED -
PLOT SCALE = 200.0000' / in.	CHECKED CAL	REVISED -	REVISED -
PLOT DATE = 02/02/2012	DATE 1/12/12	REVISED -	REVISED -

**STATE OF ILLINOIS
 DEPARTMENT OF TRANSPORTATION**

ALIGNMENT, BENCHMARK, AND TIES PLAN			
SCALE: 1"=100'	SHEET NO. OF SHEETS	STA. TO STA.	

F.A. RTE.	SECTION	COUNTY	TOTAL SHEETS	SHEET NO.
TR176	05-15103-00-BR	KNOX	97	8
	05-15106-01-BR		CONTRACT NO. 89429	
ILLINOIS FED. AID PROJECT BROS 0095 (128)				