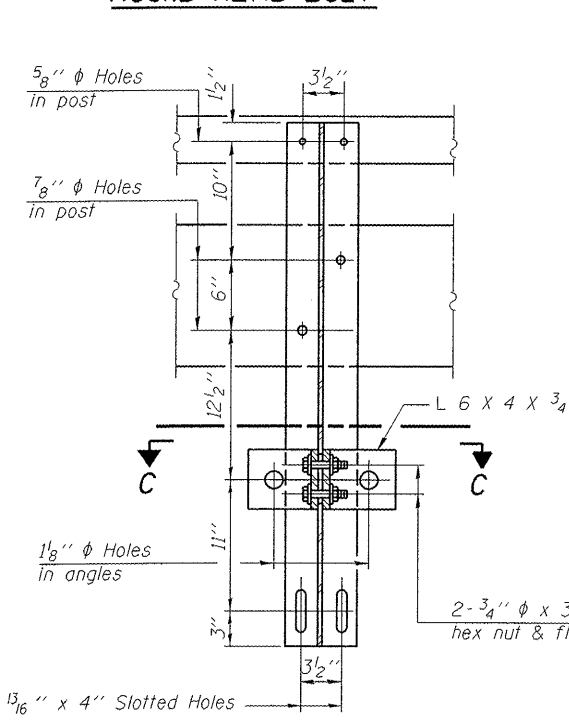
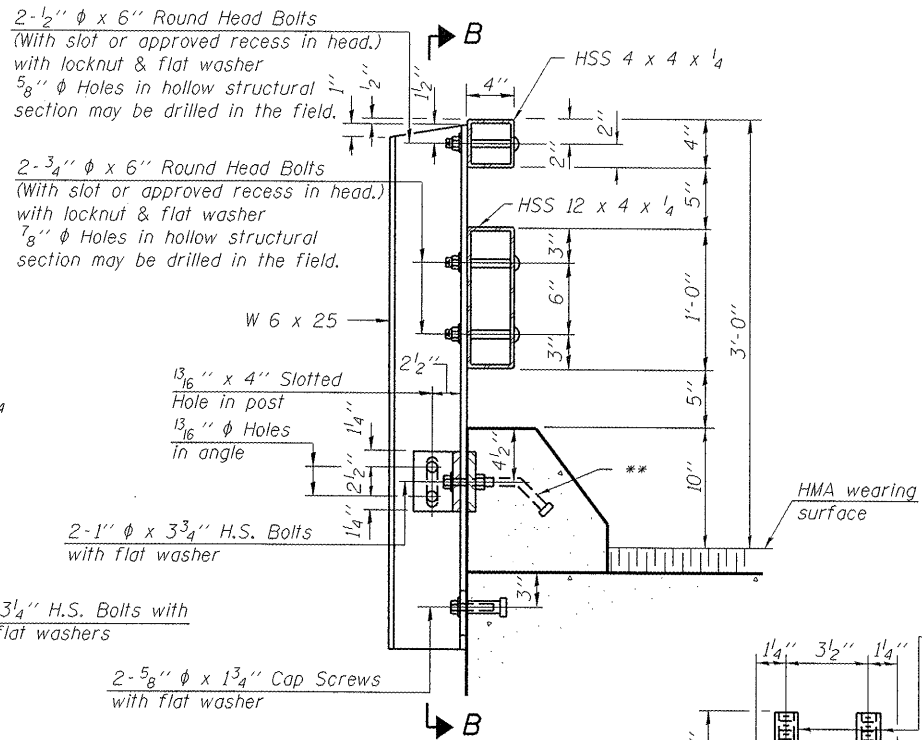


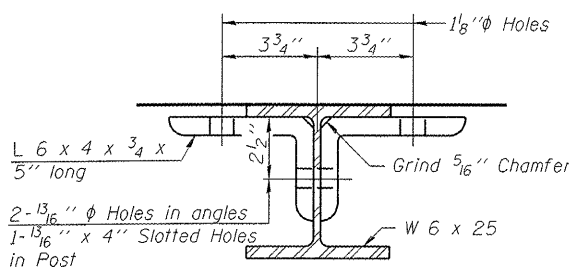
**VIEW A-A  
ROUND HEAD BOLT**



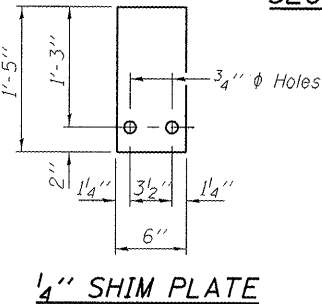
**SECTION B-B**



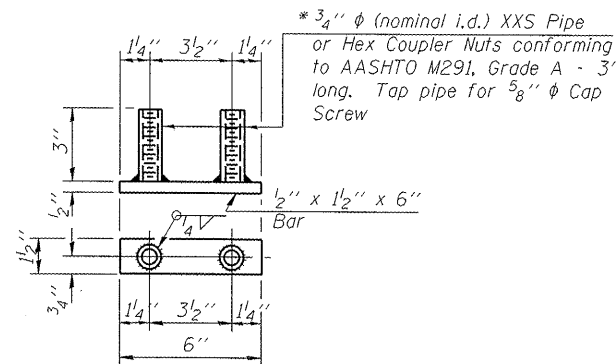
**SECTION AT RAIL POST**



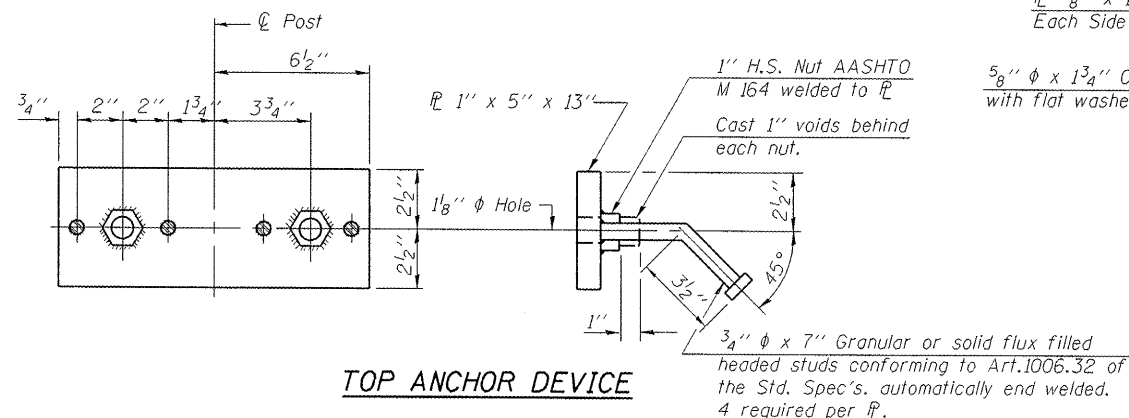
**SECTION C-C**



**1/4" SHIM PLATE**



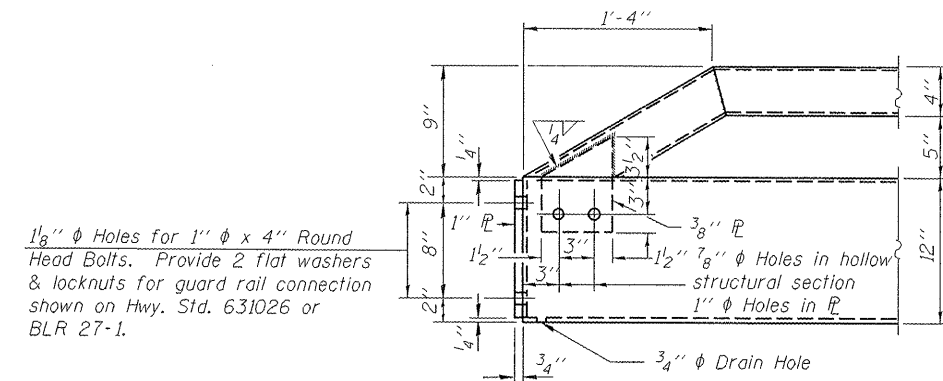
**BOTTOM ANCHOR DEVICE**



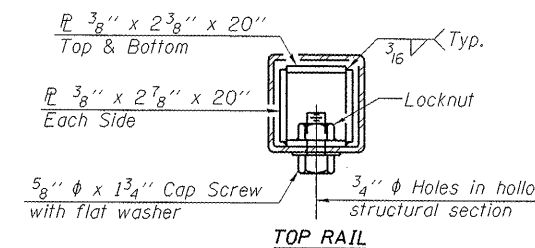
**TOP ANCHOR DEVICE**

**Notes:**

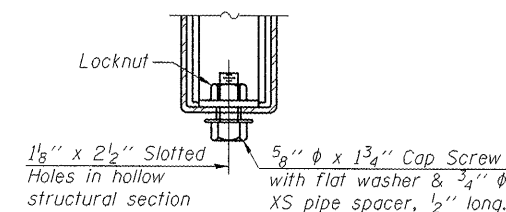
- All field drilled holes shall be coated with an approved zinc rich paint before erection.
- For multi-span bridges, sufficient 1/4 inch x 6 inch x 1-5 inch galvanized steel shims shall be provided to align rail between adjacent spans. Cost included with Steel Railing, Type T-1.
- All steel rail elements shall be galvanized according to Article 509.05 of the Standard Specifications.
- \*\* The studs of the anchor devices shall be placed below the top reinforcement bars and the outermost longitudinal reinforcement bar shall be placed directly above the studs of the rail post anchor device. See Sheet 3 of 15 for Rail Post Spacings.



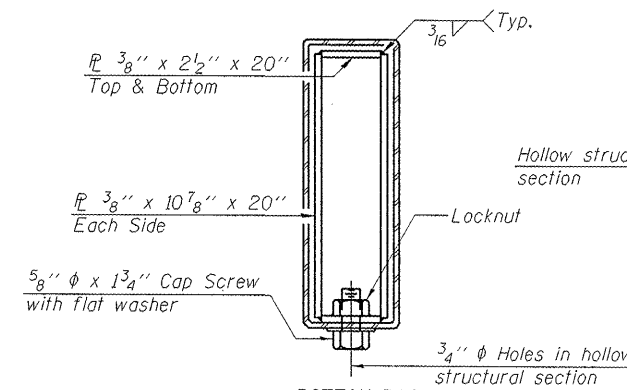
**END OF RAIL DETAILS**



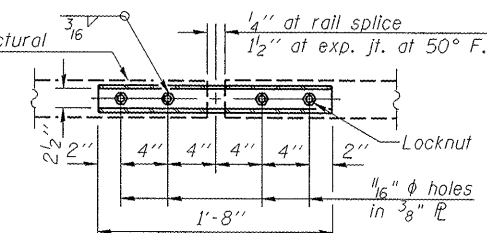
**TOP RAIL**



**RAIL SPLICE CONNECTION  
AT EXPANSION JT.**



**BOTTOM RAIL  
SECTIONS AT RAIL SPLICE**



**PLAN-BOTT. SPLICE AT  
TYPICAL**

**BILL OF MATERIAL**

Item	Unit	Quantity
Steel Railing, Type T1	Foot	339

R-24A 7-1-10 (9'-6" Maximum Post Spacing)

FILE NAME =	USER NAME =	DESIGNED - MNM	REVISED -
		CHECKED - JGT	REVISED -
		DRAWN - Rod	REVISED -
		CHECKED - TEH	REVISED -

**STATE OF ILLINOIS  
DEPARTMENT OF TRANSPORTATION**

**STEEL RAILING, TYPE T-1  
STRUCTURE NO. 048-9927**

SHEET NO. 07 OF 15 SHEETS

F.A. RTE.	SECTION	COUNTY	TOTAL SHEETS	SHEET NO.
TR 176	05-15103-00-BR	KNOX	97	33
CONTRACT NO. 89429				
ILLINOIS FED. AID PROJECT BROS 0095 128				