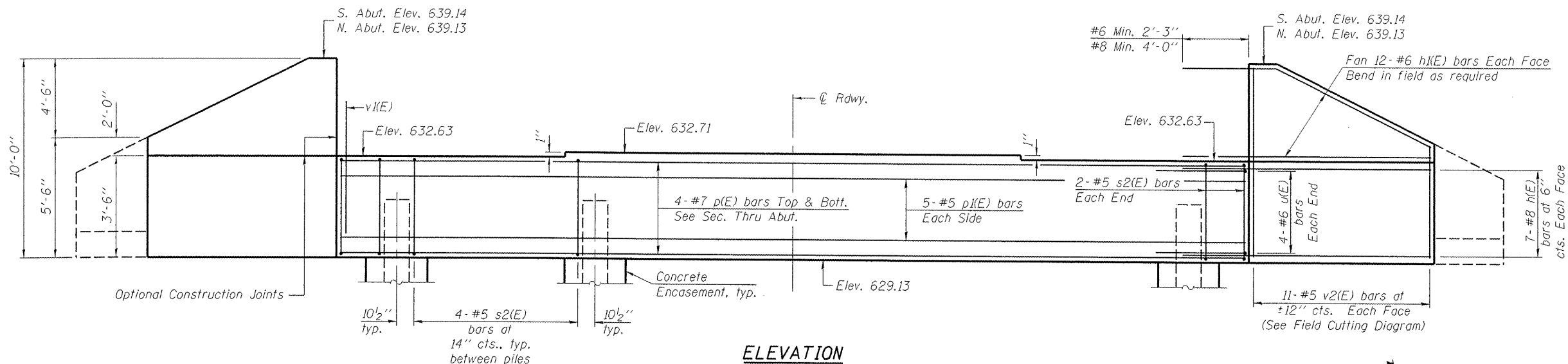
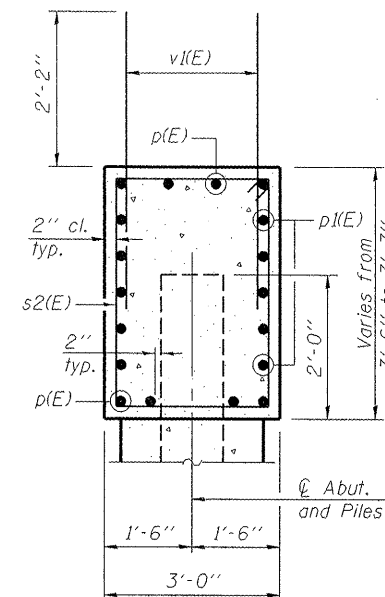


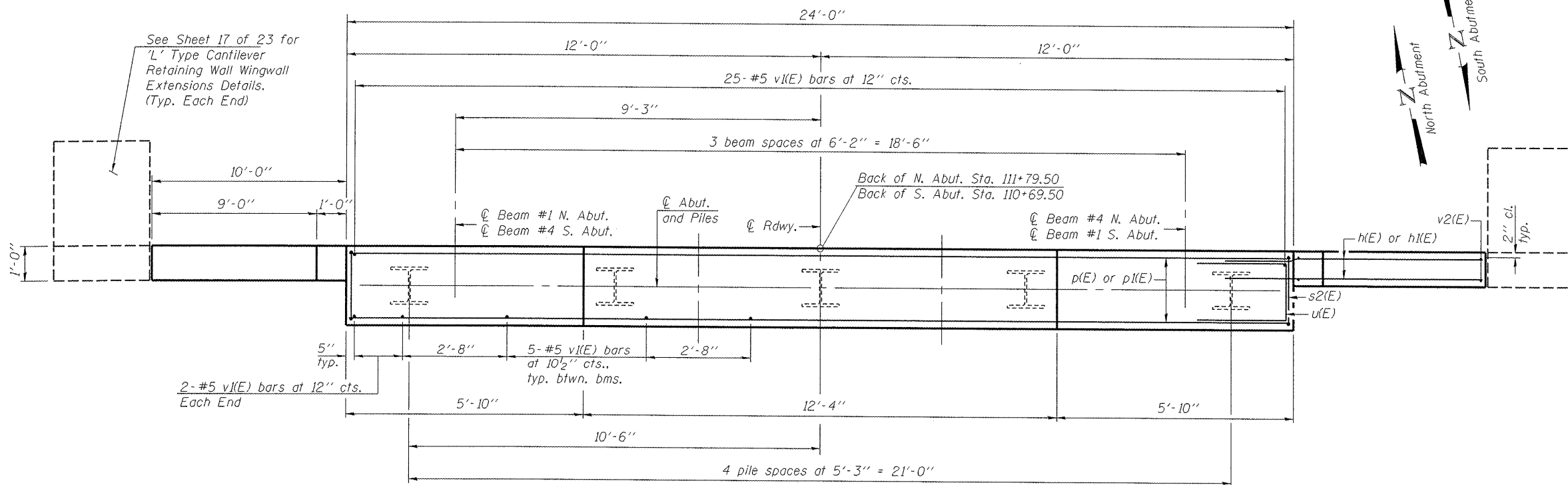
Notes:
Pour steps monolithically with cap.



ELEVATION



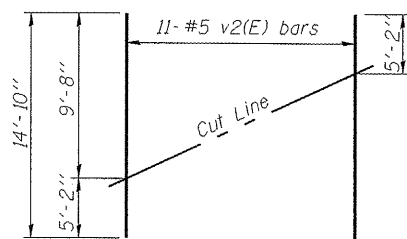
SEC. THRU ABUT.



PLAN

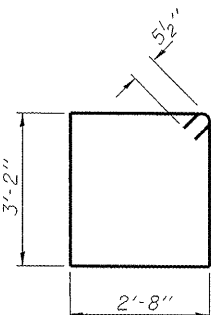
PILE DATA

Type: HP12x63
Nominal Required Bearing: 497 Kips
Factored Resistance Available: 273 Kips
Est. Length: S. Abut. 58' - N. Abut. 46'
No. Production Piles: 4 per Abut. (8 Total) with pile shoes
No. Test Piles: 1 per Abut. (2 Total) with pile shoes

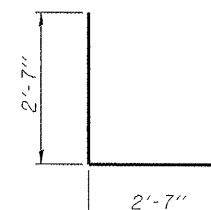


FIELD CUTTING DIAGRAM

Order v2(E) full length. Cut as shown and use remainder of bars in opposite face.



BAR s2(E)



BAR u(E)

**BILL OF MATERIAL
2 - ABUTMENTS**

Bar	No.	Size	Length	Shape
h(E)	56	#8	13'-10"	—
h(E)	96	#6	13'-2"	—
p(E)	16	#7	23'-8"	—
p(E)	20	#5	23'-8"	—
s2(E)	40	#5	12'-7"	□
u(E)	16	#6	7'-9"	□
v(E)	88	#5	4'-4"	—
v2(E)	44	#5	14'-10"	—
Structure Excavation		Cu. Yd.	178	
Concrete Structures		Cu. Yd.	30.7	
Reinforcement Bars, Epoxy Coated		Pound	7020	
Furnishing Steel Piles HP12x63		Foot	416	
Driving Piles		Foot	416	
Test Pile Steel HP12x63		Each	2	
Pile Shoes		Each	10	
Concrete Encasement		Cu. Yd.	3.4	

For details of Bar Splicers, see sheet 18 of 23.
For details of piles and Concrete Encasement, see sheet 19 of 23.

HANSON
 PROFESSIONAL DESIGN FIRM LICENSE #184-001084
 © Copyright Hanson Professional Services Inc. 2011

FILE NAME =	USER NAME =	DESIGNED - JGT	REVISOR -	STATE OF ILLINOIS DEPARTMENT OF TRANSPORTATION	NORTH & SOUTH ABUTMENT STRUCTURE NO. 048-3387	F.A. RTE.	SECTION	COUNTY	TOTAL SHEETS	SHEET NO.	
		CHECKED - MNM	REVISOR -			TR 176	05-15106-01-BR	KNOX	97	57	
PLOT SCALE =		DRAWN - DAP	REVISOR -			CONTRACT NO. 89429					
PLOT DATE =		CHECKED - JGT	REVISOR -			SHEET NO. 16 OF 23 SHEETS					