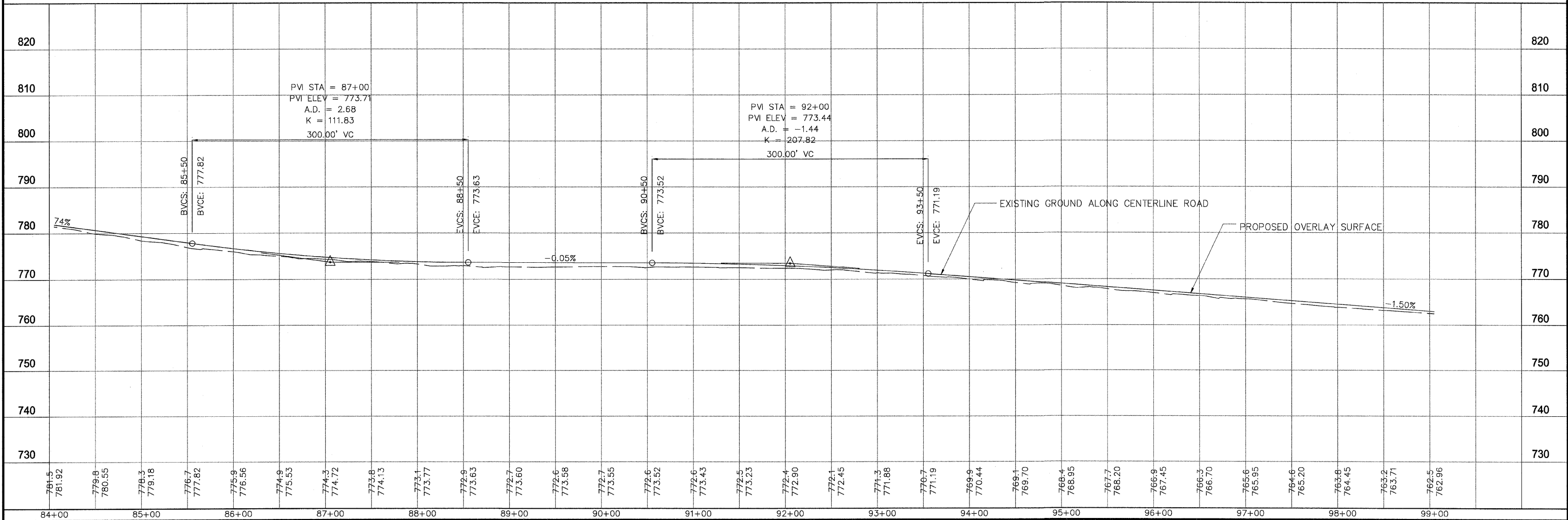
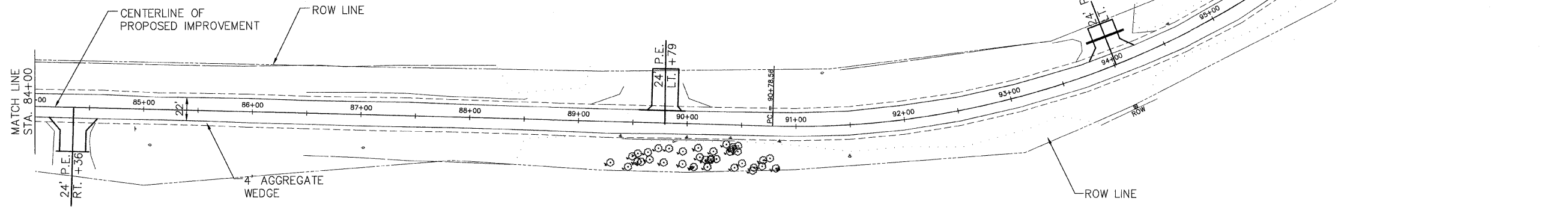


F.A.S. RTE.	SECTION	COUNTY	TOTAL SHEETS	SHEET NO.
206	04-00094-02-RS	MERCER COUNTY	18	10
STA. 84+00 TO STA. 99+00				
FED. ROAD DIST. NO. 7		ILLINOIS		

CURVE #5  
 P.C. = 90+78.56  
 P.I. = 96+67.39  
 P.T. = 100+92.50  
 $\Delta$  = 72°58'59"  
 D = 711'53"  
 R = 796.00'  
 T = 588.83'  
 E = 194.12'  
 L = 1013.94'  
 e = 6%  
 T.R. = 31'  
 S.E. RUN = 122'



2005/11/10 10:00 AM C:\Users\Public\Documents\Road\2005\11\10\100000.dwg PLOT: 10-10-05 10:00 AM 11