

STATE OF ILLINOIS
DEPARTMENT OF TRANSPORTATION
DIVISION OF HIGHWAYS

PLANS FOR
PROPOSED LOCAL AGENCY IMPROVEMENT
FEDERAL-AID STR PROJECT

F.A.S. RTE.	SECTION	COUNTY	TOTAL SHEETS	SHEET NO.
206	04-00094-02-RS	MERCER	18	1
STA. 5+56 TO STA. 121+40.01				
FED. ROAD DIST. NO. 7			ILLINOIS	

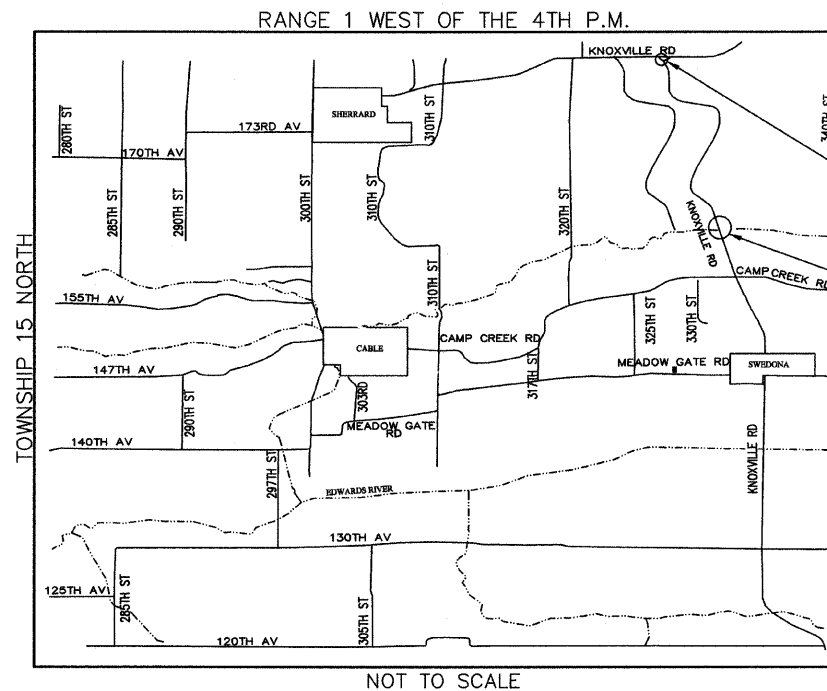
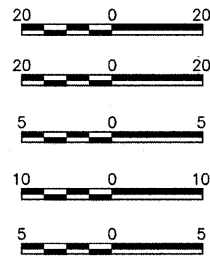
INDEX OF SHEETS	
SHEET NO.	DESCRIPTION
1	COVER SHEET
2	GENERAL NOTES, SUMMARY OF QUANTITIES & TYPICAL SECTIONS
3	SCHEDULE OF QUANTITIES
4	DETAILS
5-12	PLAN AND PROFILE SHEETS
13-18	DISTRICT 4 CADD STANDARDS

F.A.S. 206 (C.H. 4)
KNOXVILLE ROAD RESURFACING
PROJECT RS-0206 (114)
MERCER COUNTY
SECTION 04-00094-02-RS
JOB NO. C-94-129-06

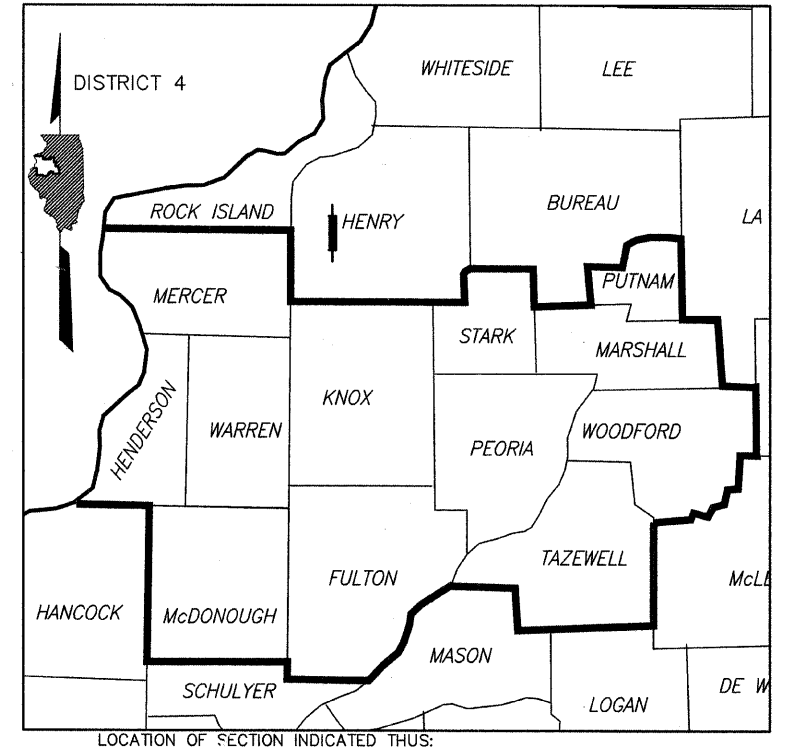
LIST OF STANDARDS

- 000001-06 STANDARD SYMBOLS, ABBREVIATIONS AND PATTERNS
- 482011-03 HMA SHLD. STRIPS/SHLDS. WITH RESURFACING OR WIDENING AND RESURFACING PROJECTS
- 701201-04 LANE CLOSURE, 2L, 2W, DAY ONLY, FOR SPEEDS > 45 MPH
- 701306-03 LANE CLOSURE, 2L, 2W, SLOW MOVING OPERATIONS DAY ONLY, FOR SPEEDS > 45 MHP
- 701311-03 LANE CLOSURE, 2L, 2W, MOVING OPERATIONS DAY ONLY
- 701336-06 LANE CLOSURE, 2L, 2W, WORK AREAS IN SERIES, FOR SPEEDS > 45 MPH
- 701901-02 TRAFFIC CONTROL DEVICES

- PLAN 1 INCH = 20 FEET
- PROFILE HORIZONTAL 1 INCH = 20 FEET
- PROFILE VERTICAL 1 INCH = 5 FEET
- CROSS SECTION HORIZ. 1 INCH = 10 FEET
- CROSS SECTION VERT. 1 INCH = 5 FEET



PROPOSED IMPROVEMENT BEGINS STA. 5+56
PROPOSED IMPROVEMENT ENDS STA. 121+40.01



WARNING



CALL BEFORE YOU DIG

DESIGN DESIGNATION

HIGHWAY CLASS: RURAL COLLECTOR
DESIGN SPEED: 55 M.P.H.
ADT = 1200
DESIGN GUIDELINES: 3R
COMMITMENTS: NONE
VARIANCES GRANTED: NONE

CONTRACT NO. 89430
JOB NO. C-94-129-06

LOCATION MAP

TOTAL LENGTH OF PROJECT = 11,584 FT. (2.194 MI.)
NET LENGTH OF PROJECT = 11,584 FT. (2.194 MI.)

Professional Engineer Seal for Bryce A. Johnson, License No. 062-057017, dated 3/29/12.

Approval stamps from County Engineer, Road Commissioner, District Engineer, and Deputy Director of Highways, Region Three Engineer, dated April 5, 2012.



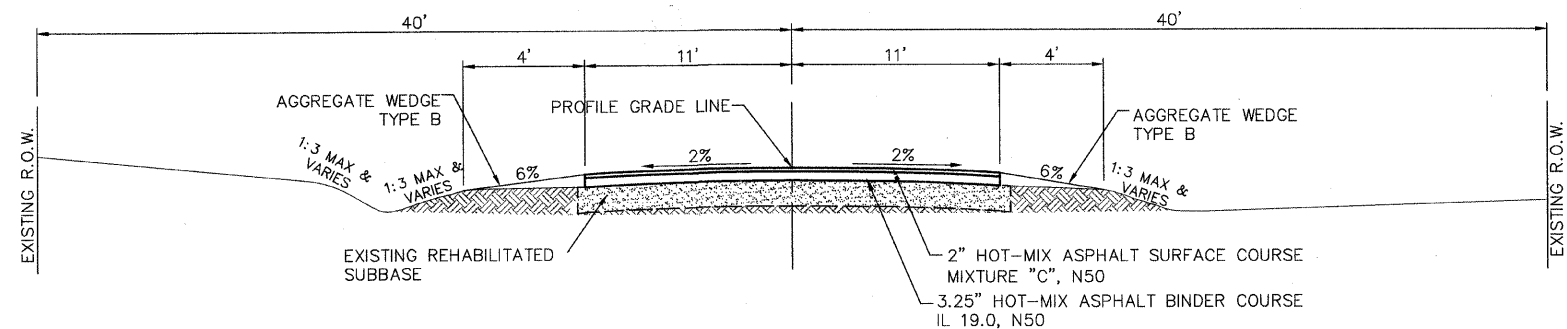
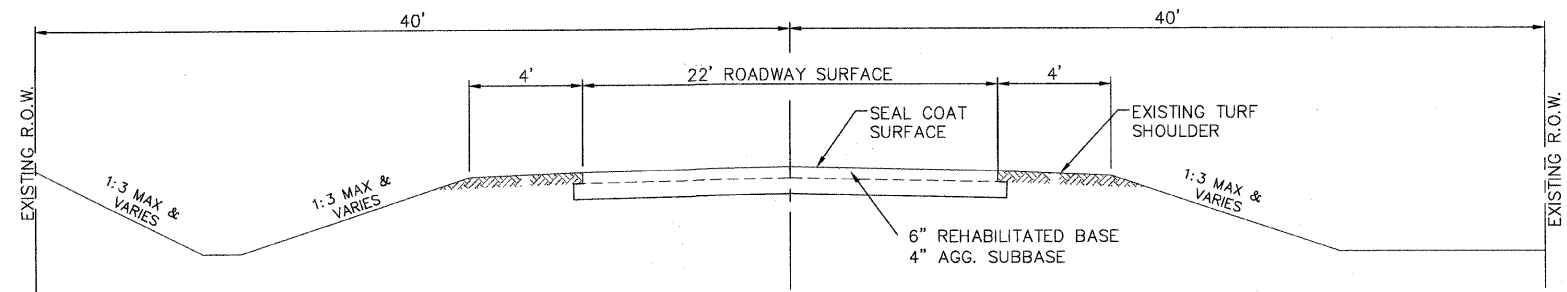
Rock Island, IL (309) 788-7644 | Bettendorf, IA (563) 344-0260 | Rockford, IL (815) 965-6400 | Sycamore, IL (815) 895-3825
www.missman.com

PRINTED BY THE AUTHORITY OF THE STATE OF ILLINOIS

SUMMARY OF QUANTITIES

T.R. RTE.	SECTION	COUNTY	TOTAL SHEETS	SHEET NO.
206	04-00094-02-RS	MERCER	18	2
STA. 5+56 TO STA. 121+40.01				
FED. ROAD DIST. NO. 7		ILLINOIS		

CODE NUMBER	PAY ITEMS	UNIT	TOTAL QUANTITY
31101000	SUBBASE GRANULAR MATERIAL, TYPE B	TON	378
35800200	AGGREGATE BASE REPAIR	TON	50
40200800	AGGREGATE SURFACE COURSE, TYPE B	TON	151
40600100	BITUMINOUS MATERIALS (PRIME COAT)	GAL	13,518
40600625	LEVELING BINDER (MACHINE METHOD), N50	TON	100
40600990	TEMPORARY RAMP	SQ YD	150
40603080	HOT-MIX ASPHALT BINDER COURSE, IL-19.0, N50	TON	5,242
40603310	HOT-MIX ASPHALT SURFACE COURSE, MIX "C", N50	TON	3,622
40800050	INCIDENTAL HOT-MIX ASPHALT SURFACING	TON	530
48102100	AGGREGATE WEDGE SHOULDER, TYPE B	TON	3,562
67100100	MOBILIZATION	L. SUM	1
70300100	SHORT-TERM PAVEMENT MARKING	FOOT	2,317
Δ 78001110	PAINT PAVEMENT MARKING LINE 4"	FOOT	45,194
*X7010216	TRAFFIC CONTROL AND PROTECTION, (SPECIAL)	L. SUM	1
Z0034105	MATERIAL TRANSFER DEVICE	TON	8,863



GENERAL NOTES

- THE FOLLOWING RATES OF APPLICATION HAVE BEEN USED IN CALCULATING PLAN QUANTITIES.

GRANULAR MATERIALS	2.05 TONS/C.Y.
BITUMINOUS MATERIALS (PRIME COAT)	0.4 GALLONS/S.Y. (ON GRANULAR BASE); 0.05 GALLONS/S.Y. (ON HMA)
HMA SURFACING	112 LBS/S.Y./INCH
- TRAFFIC CONTROL IS OUTLINED IN THE SPECIAL PROVISION TRAFFIC CONTROL AND PROTECTION, (SPECIAL).
- ACCESS MUST BE MAINTAINED TO ALL EXISTING PROPERTIES DURING CONSTRUCTION PER ARTICLE 107.09 UNLESS ARRANGEMENTS ARE MADE IN WRITING BY THE CONTRACTOR WITH THE PROPERTY OWNERS WITH A COPY TO THE ENGINEER FOR SHORT-TERM CLOSURES.
- CONTINUOUS PAVING OPERATIONS ON THE MAIN ROADWAY SHALL BE MAINTAINED AT ALL TIMES DURING THE CONSTRUCTION OF THE HOT-MIX ASPHALT SURFACE. NO INTERRUPTIONS FOR SIDE ROADS, ENTRANCES, TURN LANES, ETC. WILL BE ALLOWED.
- FOR STABILIZATION, ALL TYPE III BARRICADES SHALL REQUIRE A MINIMUM OF FOUR SANDBAGS PER BARRICADE.
- IT SHALL BE THE CONTRACTOR'S RESPONSIBILITY TO PROVIDE WASTE AREAS AND/OR DISPOSAL SITE(S) OUTSIDE THE RIGHT-OF-WAY AND EASEMENTS, FOR EXCESS OR UNSUITABLE MATERIAL, WHICH IS NOT DESIRABLE TO BE INCORPORATED INTO THE WORK INVOLVED ON THIS PROJECT, AND TO PROVIDE BORROW AREAS/USE AREAS (TEMPORARY ACCESS ROADS, DETOURS, RUN-AROUNDS, ETC.) FOR THE PROSECUTION OF THE WORK. ANY SUCH BORROW, USE, AND/OR WASTE AREAS SHALL BE REQUIRED TO HAVE AN ENVIRONMENTAL REVIEW IN ACCORDANCE WITH THE SPECIAL PROVISIONS.
- THE CONTRACTOR SHALL BE RESPONSIBLE FOR ALL DAMAGE TO ITEMS NOT SPECIFIED FOR REMOVAL, RECONSTRUCTION, OR DEMOLITION. AREAS OUTSIDE THE PROJECT SCOPE OR CONSTRUCTION LIMITS DAMAGED BY THE CONTRACTOR'S OPERATIONS SHALL BE REPLACED OR REPAIRED BY THE CONTRACTOR, PER THE APPROVAL OF THE ENGINEER. NO SEPARATE PAYMENT SHALL BE MADE FOR THIS WORK.
- EXCAVATION OF EXISTING GRAVEL OR SEAL COAT AGGREGATE SURFACES SHALL BE CONSIDERED EARTH EXCAVATION, AND WILL NOT BE PAID FOR SEPARATELY.
- EXCAVATION AND SUB-BASE PREPARATION AT BUTT JOINTS SHALL NOT BE CONSTRUCTED MORE THAN THREE (3) DAYS PRIOR TO PLACEMENT OF THE HMA SURFACE.

GENERAL NOTES (CONT.)

- THE FOLLOWING MIXTURE REQUIREMENTS ARE APPLICABLE FOR THIS PROJECT

MIXTURE USE(S)	SURFACE COURSE/ INCIDENTAL SURFACE	BINDER COURSE	LEVEL BINDER
RAP% (MAX):	15	25	25
AC/PG:	PG 58-28	PG 64-22	PG 64-22
DESIGN AIR Voids:	4.0 @ N50	4.0 @ N50	4.0 @ N50
MIXTURE COMPOSITION: (GRADATION MIXTURE)	IL 9.5 OR IL 12.5	IL 19.0	IL 9.5
FRICTION AGGREGATE	MIXTURE C	N/A	N/A

NOTES: INDIVIDUAL LIFT THICKNESS OF EACH MIX TYPE WILL BE NO LESS THAN 3 TIMES NOMINAL MAXIMUM AGGREGATE SIZE AND NO MORE THAN 6 TIMES NOMINAL MAXIMUM AGGREGATE SIZE.

- CONTRACTOR SHALL REMOVE ALL LOOSE MATERIAL AND DEBRIS FROM THE ROADBED BY USE OF A MECHANICAL SWEEPER OR HAND BROOMS TO THE SATISFACTION OF THE ENGINEER PRIOR TO PRIME COAT APPLICATION. THIS WILL NOT BE PAID FOR SEPARATELY BUT SHALL BE INCLUDED IN THE COST OF THE VARIOUS HMA PAY ITEMS.

STRUCTURAL DESIGN TRAFFIC: YEAR 2019		
PV = 1,056	SU = 84	MU = 60
ROAD / STREET CLASSIFICATION: Class III		
PERCENT OF STRUCTURAL DESIGN TRAFFIC IN DESIGN LANE:		
P = 88	S = 7	M = 5
TRAFFIC FACTOR: Actual TF = 0.21 AC Type = 64-22		
PG GRADE: Binder = 64-22	Surface = 58-28	
SUBGRADE SUPPORT RATING:		
SSR = > 3		

GENERAL NOTES AND SUMMARY OF QUANTITIES

SECTION 04-00094-02-RS
 F.A.S. RTE. 206, STA. 5+56 TO 121+40.01
 RICHLAND GROVE TOWNSHIP
 MERCER COUNTY

SCHEDULE OF QUANTITIES

T.R. RTE.	SECTION	COUNTY	TOTAL SHEETS	SHEET NO.
206	04-00094-02-RS	MERCER	18	3
STA. 5+56 TO STA. 121+40.01				
FED. ROAD DIST. NO. 7		ILLINOIS		

31101000	SUBBASE GRANULAR MATERIAL, TYPE B	TON
	STA. 5+56.00 (BUTT JOINT)	147
	LT. STA. 9+33.00 (SIDE ROAD)	147
	STA. 121+40.01 (BUTT JOINT)	85
	TOTAL	378
35800200	AGGREGATE BASE REPAIR	TON
	STA. 5+56.00 - 121+40.01 (ESTIMATED QUANTITY)	50
	TOTAL	50
40200800	AGGREGATE SURFACE COURSE, TYPE B	TON
	F.E. RT. STA. 25+10	12.6
	F.E. RT. STA. 27+02	12.6
	F.E. RT. STA. 29+57	12.6
	F.E. LT. STA. 36+95	12.6
	F.E. LT. STA. 38+54	12.6
	F.E. RT. STA. 50+69	12.6
	F.E. LT. STA. 74+79	12.6
	F.E. RT. STA. 74+85	12.6
	F.E. LT. STA. 82+04	12.6
	F.E. RT. STA. 101+23	12.6
	F.E. LT. STA. 117+87	12.6
	F.E. RT. STA. 117+92	12.6
	TOTAL	151.2
40600100	BITUMINOUS MATERIALS (PRIME COAT)	GAL
	STA. 5+56.00 - 121+40.01 (AGG BASE COURSE)	11,380
	STA. 5+56.00 - 121+40.01 (HMA BINDER COURSE)	1,423
	INCIDENTAL HMA	715
	TOTAL	13,518
40600625	LEVELING BINDER (MACHINE METHOD), N50	TON
	STA. 5+56.00 - 121+40.01 (ESTIMATED QUANTITY)	100
	TOTAL	100
40600990	TEMPORARY RAMP	SQ YD
	STA. 5+56.00	50
	LT. STA. 9+33.00	50
	STA. 121+40.01	50
	TOTAL	150

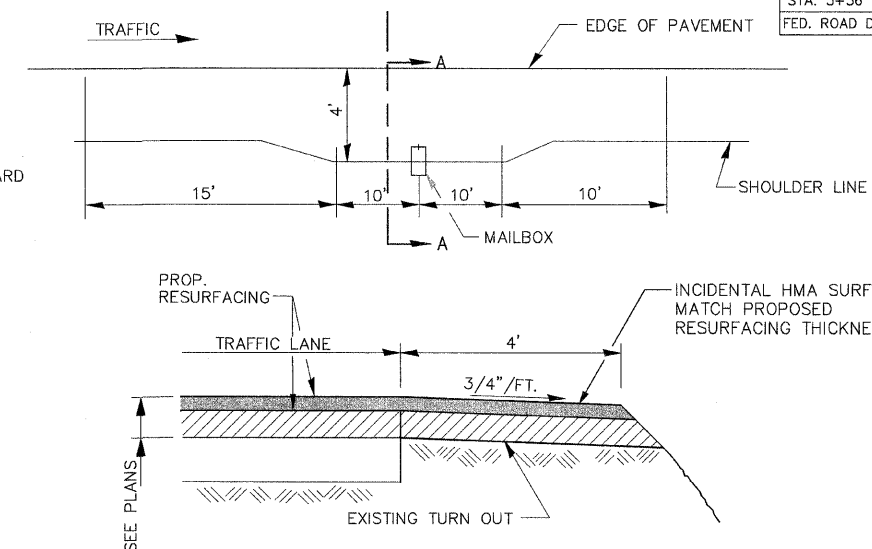
40603080	HOT-MIX ASPHALT BINDER COURSE, IL-19.0, N50	TON
	STA. 5+56.00 - 121+40.01	5,242
	TOTAL	5,242
40603310	HOT-MIX ASPHALT SURFACE COURSE, MIX "C", N50	TON
	STA. 5+56.00 - 121+40.01	3,622
	TOTAL	3,622
40800050	INCIDENTAL HOT-MIX ASPHALT SURFACING	TON
	S.R. LT. STA. 9+70	20.2
	P.E. RT. STA. 24+76	11.5
	P.E. RT. STA. 34+26	11.5
	P.E. RT. STA. 35+33	13.4
	P.E. RT. STA. 37+65	11.5
	P.E. RT. STA. 37+93	11.5
	P.E. LT. STA. 40+58	13.4
	P.E. RT. STA. 41+59	11.5
	P.E. LT. STA. 45+57	13.0
	C.E. RT. STA. 46+90	20.3
	P.E. LT. STA. 50+26	16.4
	P.E. RT. STA. 55+01	16.4
	P.E. RT. STA. 57+61	13.4
	P.E. RT. STA. 59+31	17.4
	P.E. LT. STA. 60+57	13.4
	P.E. RT. STA. 60+57	11.5
	P.E. LT. STA. 63+09	11.5
	P.E. RT. STA. 63+96	13.0
	P.E. LT. STA. 68+14	13.4
	P.E. RT. STA. 69+26	11.5
	P.E. RT. STA. 77+06	11.5
	P.E. RT. STA. 82+31	11.5
	P.E. RT. STA. 84+36	17.4
	P.E. LT. STA. 89+79	17.4
	P.E. LT. STA. 94+02	17.4
	P.E. LT. STA. 105+43	13.0
	P.E. LT. STA. 114+96	11.5
	MAILBOX TURNOUTS (21 TOTAL)	155.2
	TOTAL	530.3
48102100	AGGREGATE WEDGE SHOULDER, TYPE B	TON
	LT. & RT. STA. 5+56.00 - 121+40.01	3,562
	TOTAL	3,562
	NOTE: DOESN'T INCLUDE SHOULDER AREA WITHIN F.E. WHICH IS INCLUDED IN AGGREGATE SURFACE COURSE, TYPE B	

67100100	MOBILIZATION	L. SUM
	COMPLETE	1
	TOTAL	1
70300100	SHORT-TERM PAVEMENT MARKING	FOOT
	SKIP-DASHED YELLOW (4' DASH, 40' SKIP)	
	CL STA. 5+56.00 - 121+40.01 (BINDER)	1,158
	CL STA. 5+56.00 - 121+40.01 (SURFACE)	1,158
	TOTAL	2,317
78001110	PAINT PAVEMENT MARKING LINE 4"	FOOT
	SOLID YELLOW	
	CL STA. 5+56 - 103+50 DOUBLE YELLOW (NO PASSING)	19,588
	CL STA. 103+50 - 121+40.01 LEFT LANE (NO PASSING)	1,790
	CL STA. 121+40.01 - 122+40.03 DOUBLE YELLOW (BRIDGE)	200
	SKIP-DASHED YELLOW (10' DASH, 30' SKIP)	
	CL STA. 103+50 - 121+40.01 RIGHT LANE	448
	SOLID WHITE (EDGE LINE)	
	LT AND RT. STA. 5+56 - 121+40.01	23,168
	TOTAL	45,194
X7010216	TRAFFIC CONTROL AND PROTECTION, (SPECIAL)	L. SUM
	COMPLETE	1
	TOTAL	1
Z0034105	MATERIAL TRANSFER DEVICE	TON
	STA. 5+56.00 - 121+40.01 (BINDER)	5,242
	STA. 5+56.00 - 121+40.01 (SURFACE)	3,622
	TOTAL	8,863

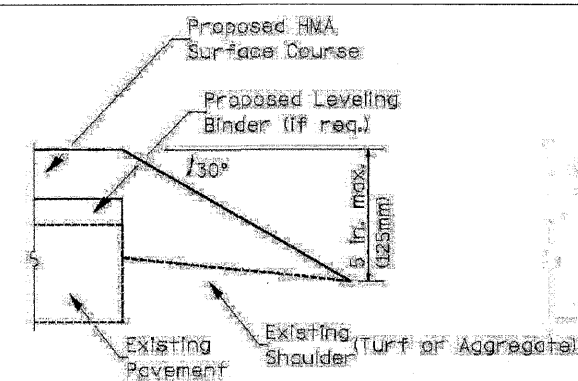
SCHEDULE OF QUANTITIES
 SECTION 04-00094-02-RS
 F.A.S. RTE. 206, STA. 5+56 TO 121+40.01
 RICHLAND GROVE TOWNSHIP
 MERCER COUNTY

T.R. RTE.	SECTION	COUNTY	TOTAL SHEETS	SHEET NO.
206	04-00094-02-RS	MERCER	18	4
STA. 5+56 TO STA. 121+40.01		FED. ROAD DIST. NO. 4 ILLINOIS		

NOTE :
SEE DISTRICT STANDARD
406201-D4



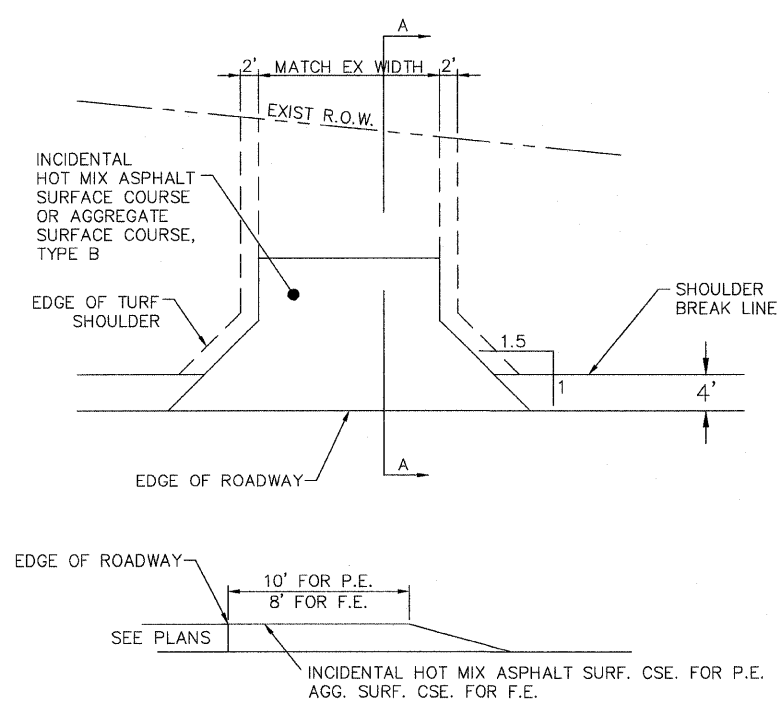
SECTION A-A
RURAL MAILBOX TURNOUT DETAILS



SAFETY EDGE AT
EDGE OF PAVEMENT

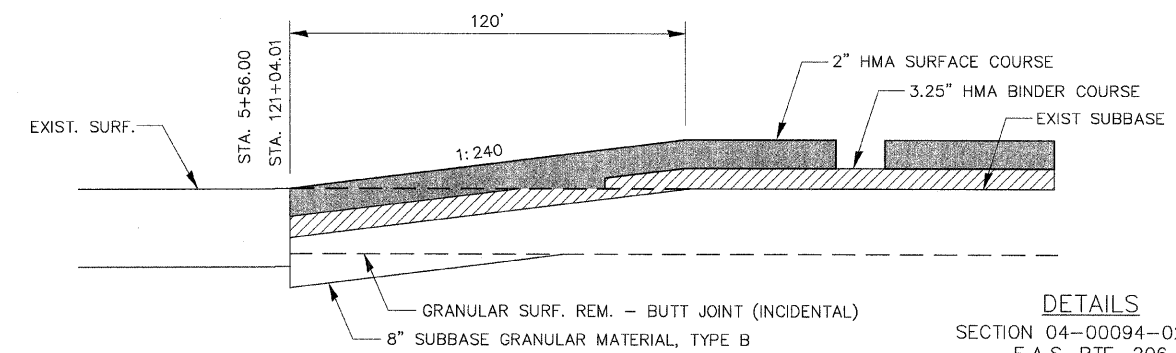
NOTE:
1. See Highway Standard 46201 for placement of Aggregate Shoulders.
2. Incidental to the cost of various HMA paving items.

TYPICAL EXISTING ENTRANCE DETAIL



SECTION A-A

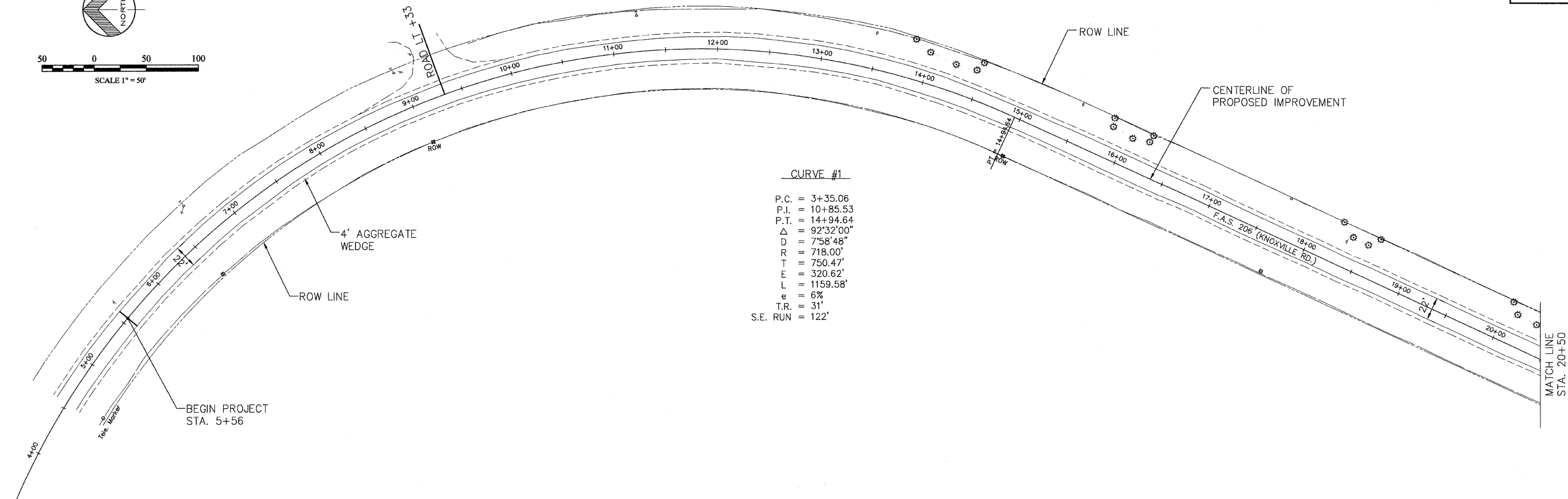
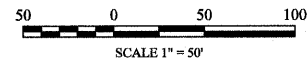
NOTE:
SEE DISTRICT STANDARD
406301-D4



BUTT JOINT

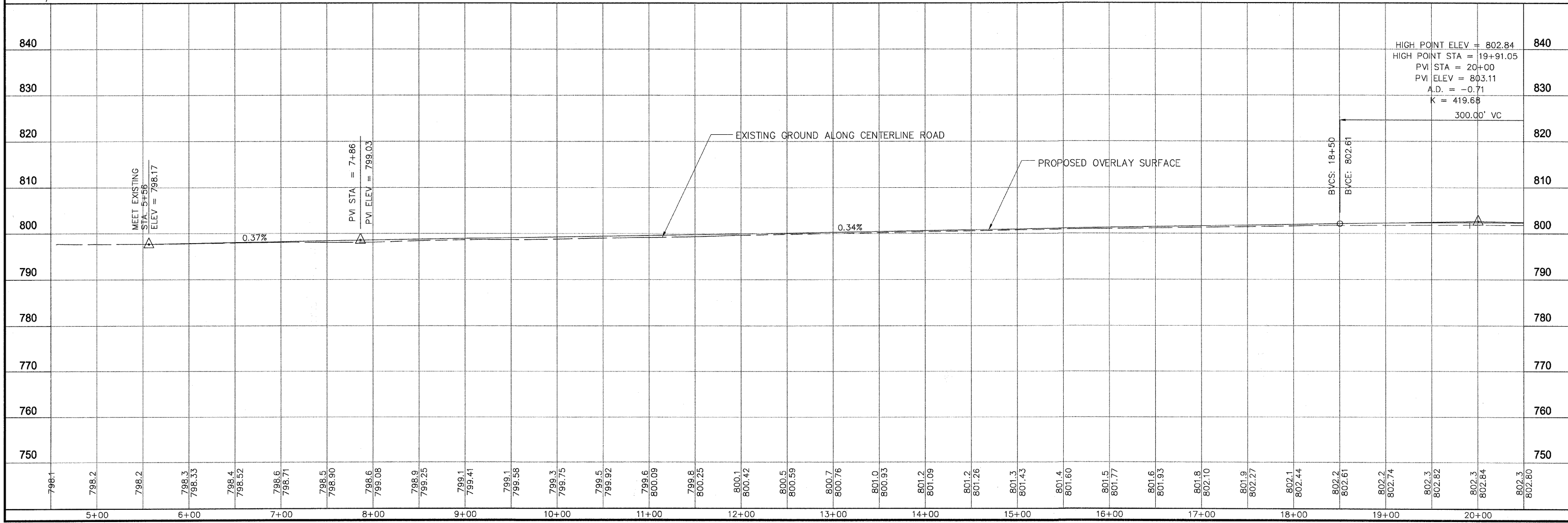
DETAILS
SECTION 04-00094-02-RS
F.A.S. RTE. 206
RICHLAND GROVE TOWNSHIP
MERCER COUNTY

F.A.S. RTE.	SECTION	COUNTY	TOTAL SHEETS	SHEET NO.
206	04-00094-02-RS	MERCER COUNTY	18	5
STA. 5+56 TO STA. 20+50				
FED. ROAD DIST. NO. 7 ILLINOIS				



CURVE #1

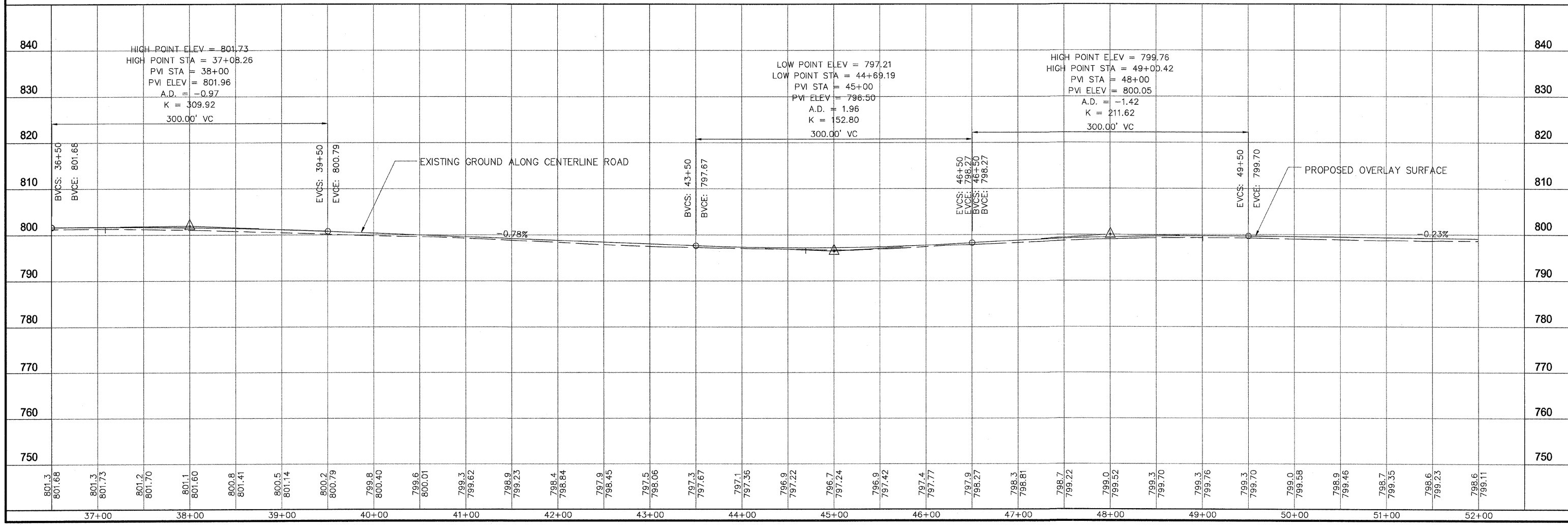
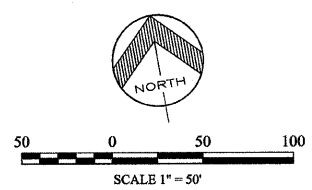
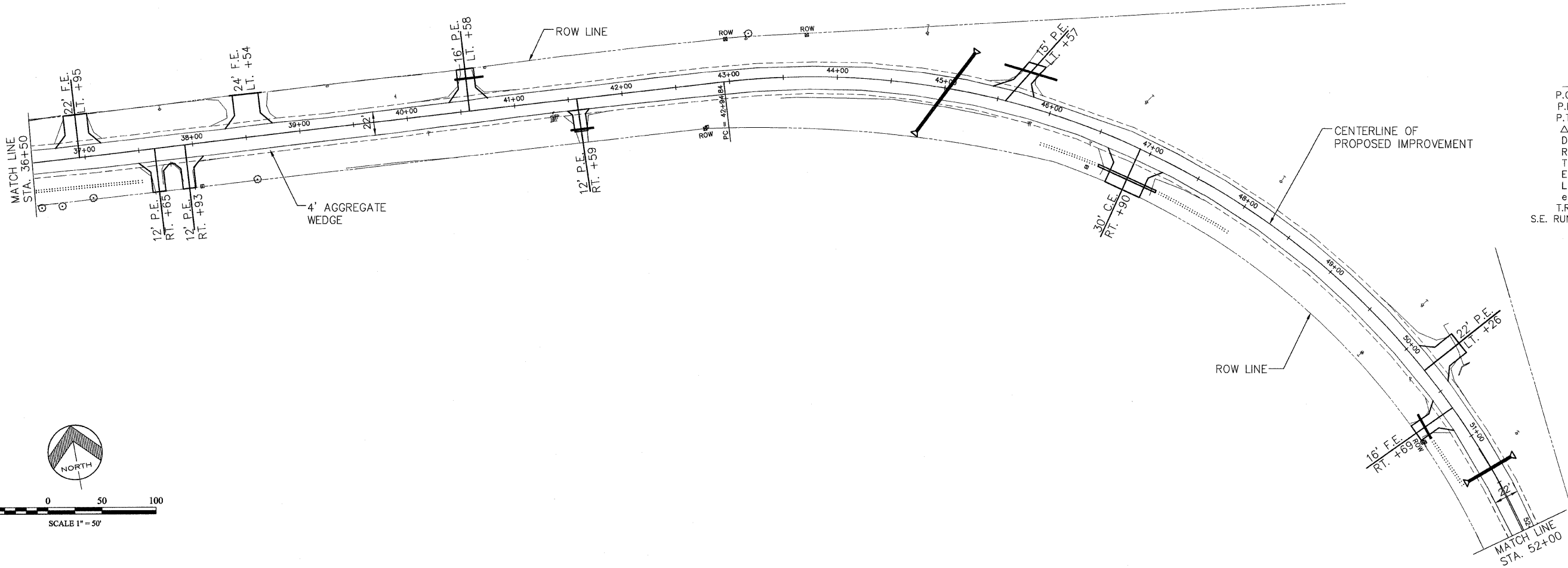
P.C. =	3+35.06
P.I. =	10+85.53
P.T. =	14+94.64
Δ =	92°32'00"
D =	7°58'48"
R =	718.00'
T =	750.47'
E =	320.62'
L =	1159.58'
e =	6%
T.R. =	31'
S.E. RUN =	122'



2025/04/01 10:00 AM C:\Users\jgibson\OneDrive\Documents\Projects\206\Drawings\04-00094-02-RS\04-00094-02-RS-05.dwg (1:50) 11/11/2025 10:00 AM

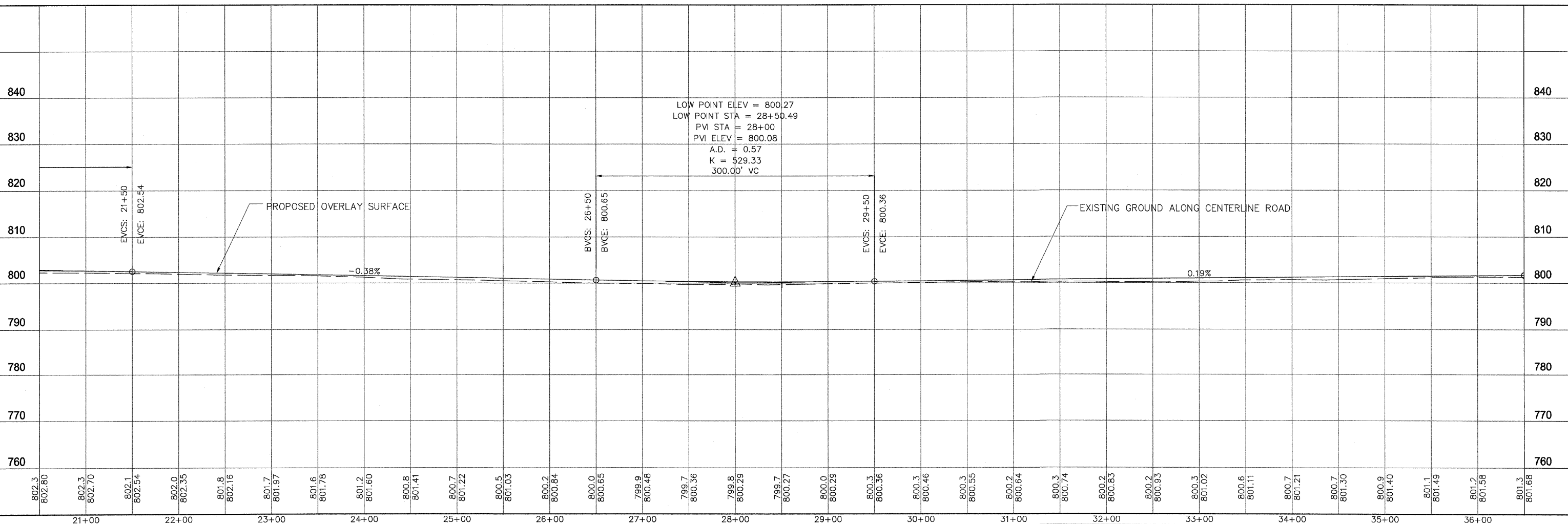
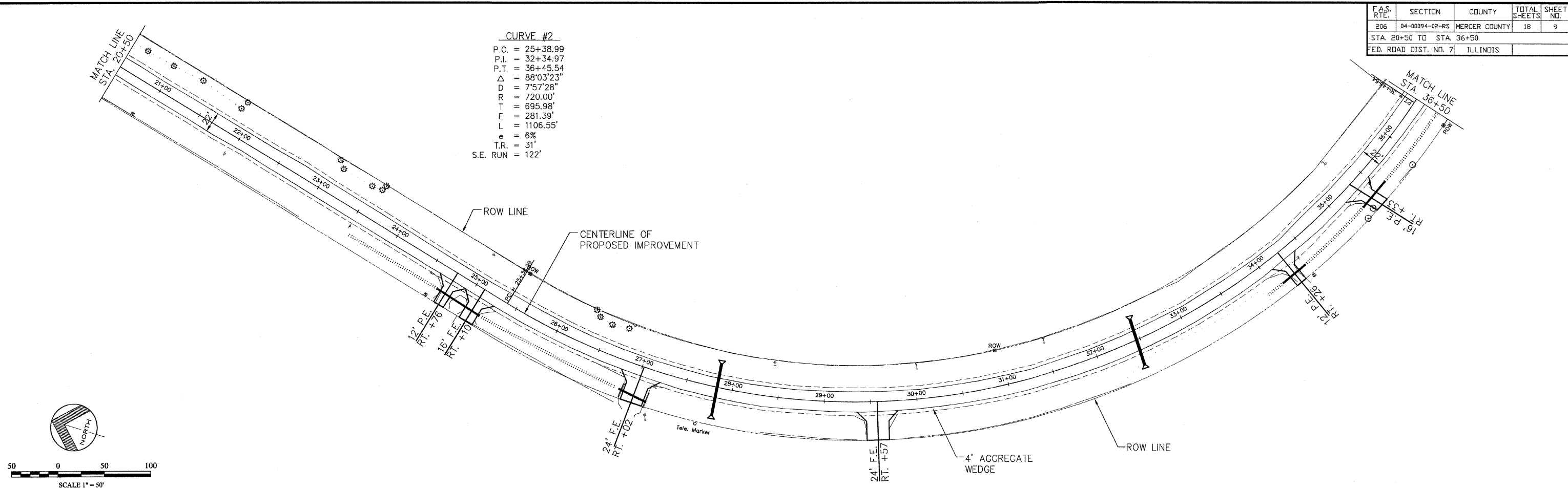
F.A.S. RTE.	SECTION	COUNTY	TOTAL SHEETS	SHEET NO.
206	04-00094-02-RS	MERCER COUNTY	18	6
STA. 36+50 TO STA. 52+00		FED. ROAD DIST. NO. 7 ILLINOIS		

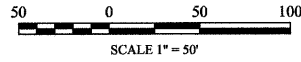
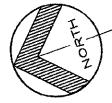
CURVE #3
P.C. = 42+94.84
P.I. = 46+38.18
P.T. = 53+49.74
 Δ = 83°23'01"
D = 7°54'10"
R = 725.00'
T = 645.58'
E = 245.77'
L = 1054.90'
e = 6%
T.R. = 31'
S.E. RUN = 122'



F.A.S. RTE.	SECTION	COUNTY	TOTAL SHEETS	SHEET NO.
206	04-00094-02-RS	MERCER COUNTY	18	9
STA. 20+50 TO STA. 36+50				
FED. ROAD DIST. NO. 7		ILLINOIS		

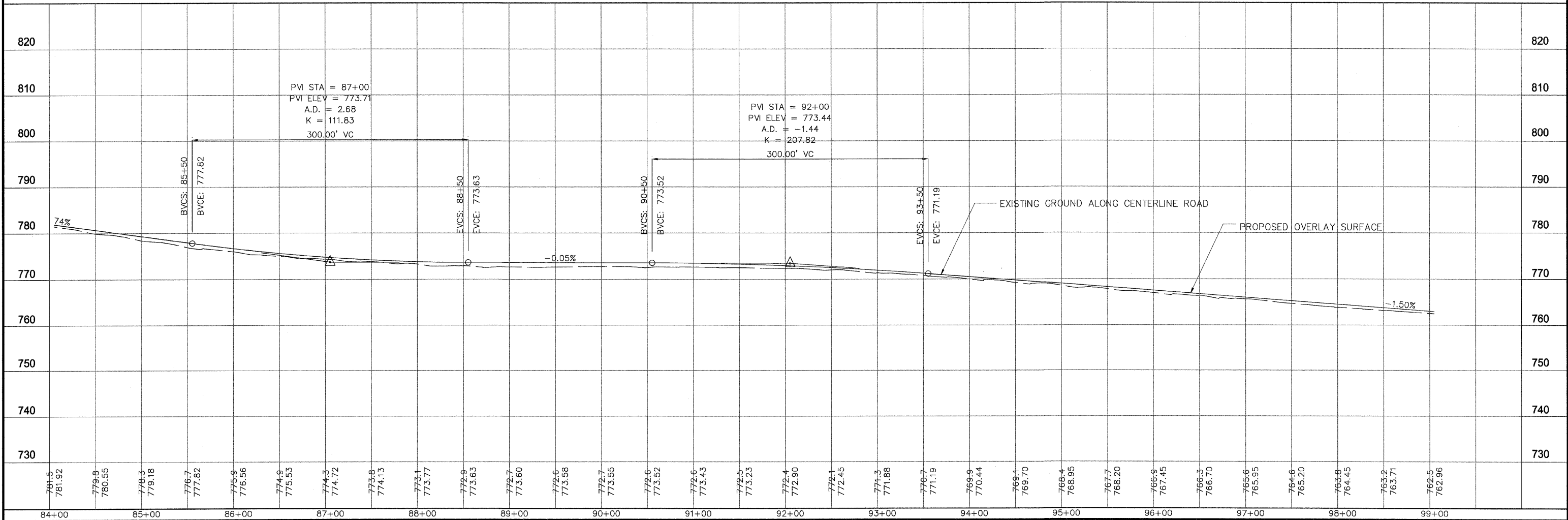
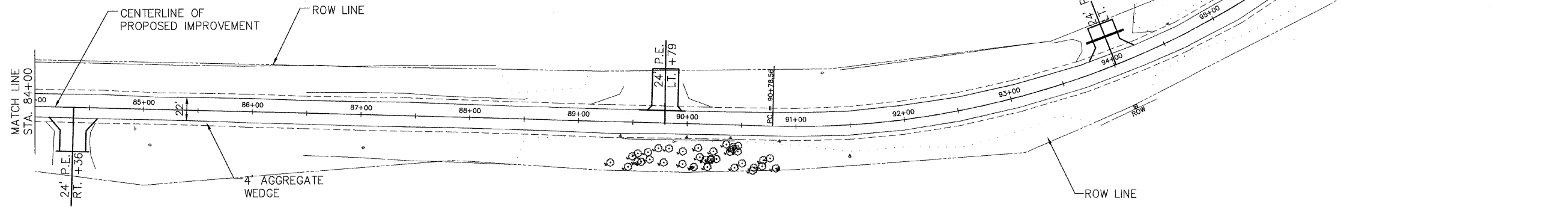
CURVE #2
P.C. = 25+38.99
P.I. = 32+34.97
P.T. = 36+45.54
 Δ = 88°03'23"
D = 7°57'28"
R = 720.00'
T = 695.98'
E = 281.39'
L = 1106.55'
e = 6%
T.R. = 31'
S.E. RUN = 122'





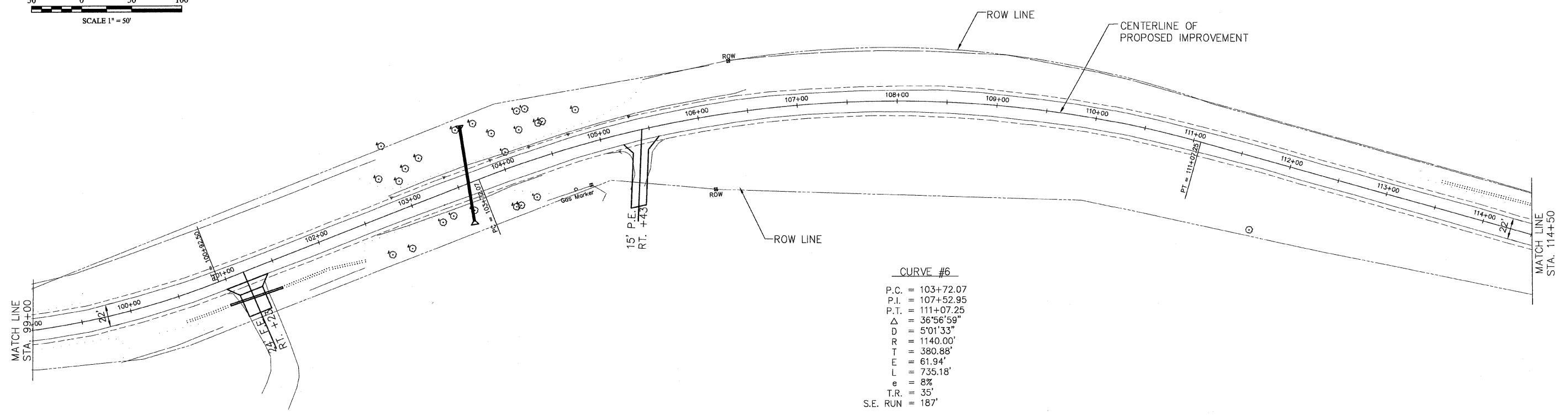
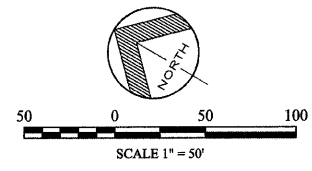
F.A.S. RTE.	SECTION	COUNTY	TOTAL SHEETS	SHEET NO.
206	04-00094-02-RS	MERCER COUNTY	18	10
STA. 84+00 TO STA. 99+00				
FED. ROAD DIST. NO. 7		ILLINOIS		

CURVE #5
 P.C. = 90+78.56
 P.I. = 96+67.39
 P.T. = 100+92.50
 Δ = 72°58'59"
 D = 711'53"
 R = 796.00'
 T = 588.83'
 E = 194.12'
 L = 1013.94'
 e = 6%
 T.R. = 31'
 S.E. RUN = 122'



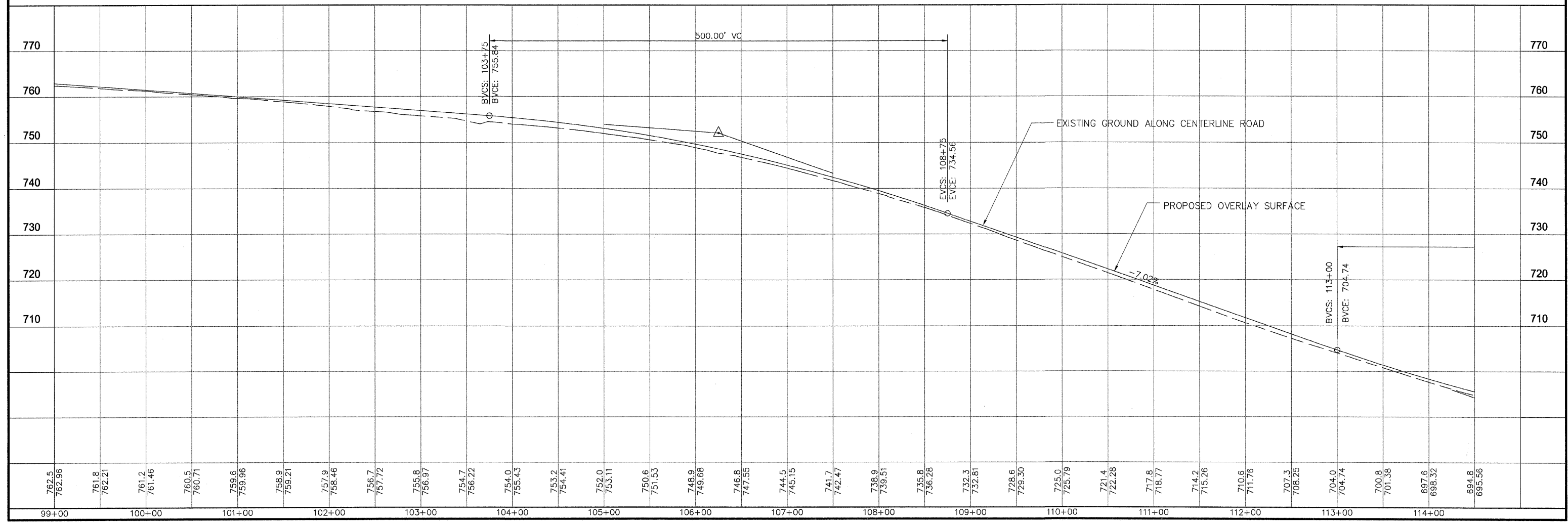
2005/11/10 10:00 AM C:\Users\Public\Documents\Road\2005\11\10\100000.dwg PLOT: 10-10-05 10:00 AM 100% 11

F.A.S. RTE.	SECTION	COUNTY	TOTAL SHEETS	SHEET NO.
206	04-00094-02-RS	MERCER COUNTY	18	11
STA. 99+00 TO STA. 114+50				
FED. ROAD DIST. NO. 7 ILLINOIS				

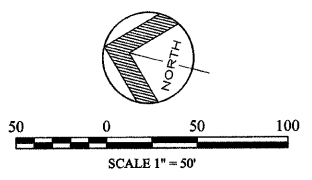
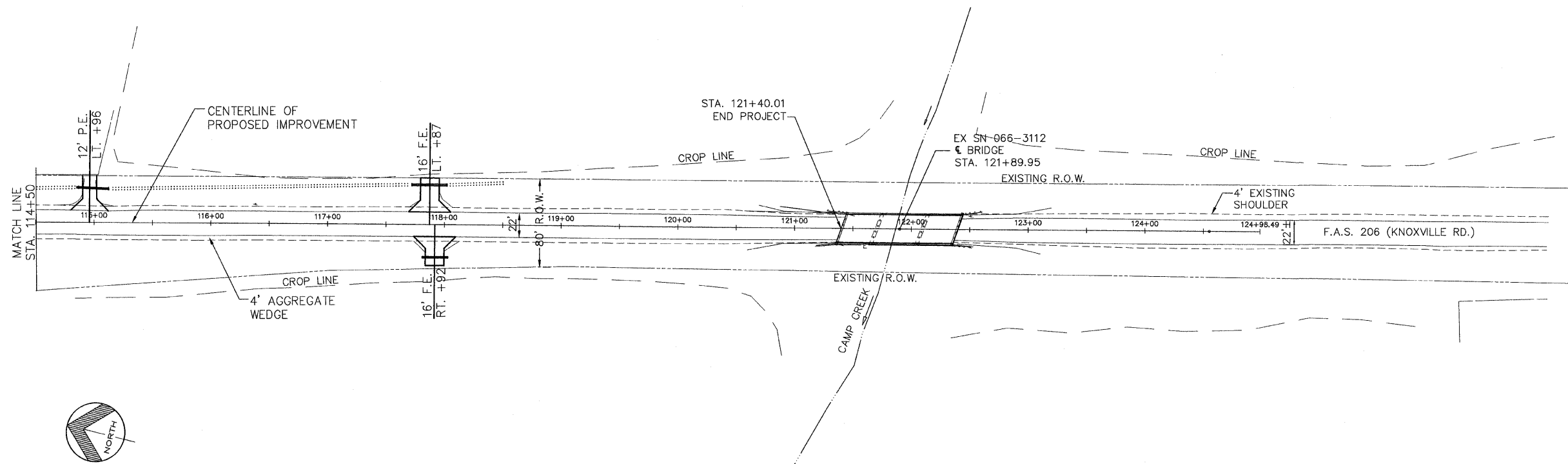


CURVE #6

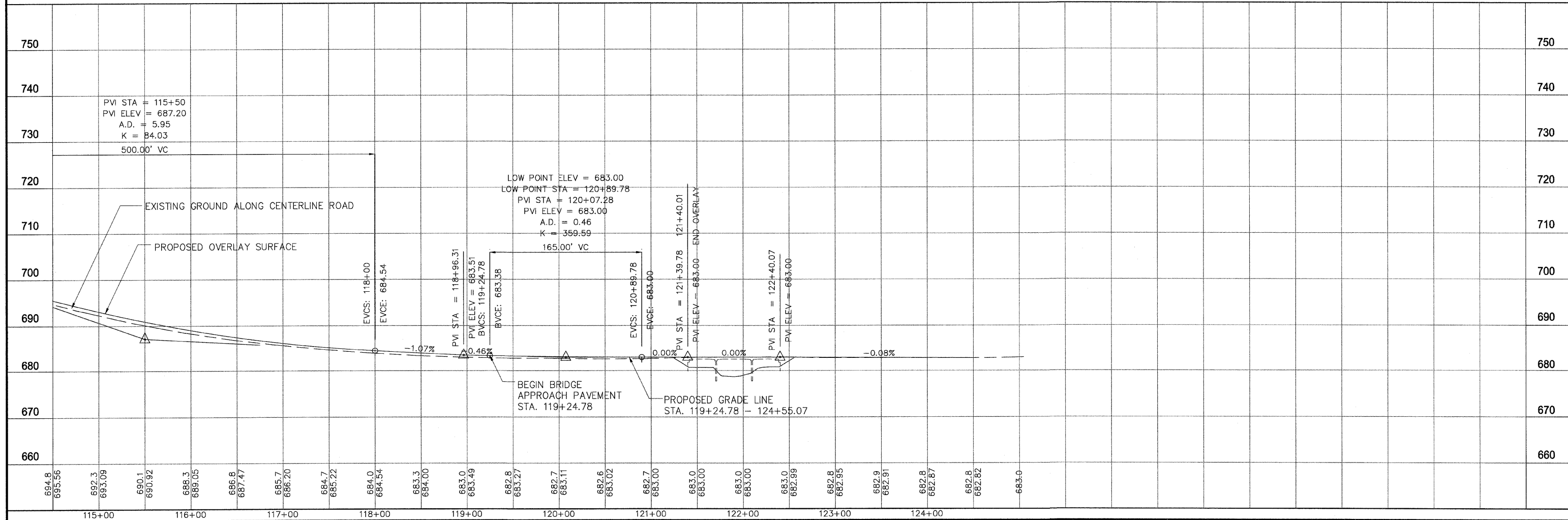
P.C.	=	103+72.07
P.I.	=	107+52.95
P.T.	=	111+07.25
Δ	=	36°56'59"
D	=	5°01'33"
R	=	1140.00'
T	=	380.88'
E	=	61.94'
L	=	735.18'
e	=	8%
T.R.	=	35'
S.E. RUN	=	187'



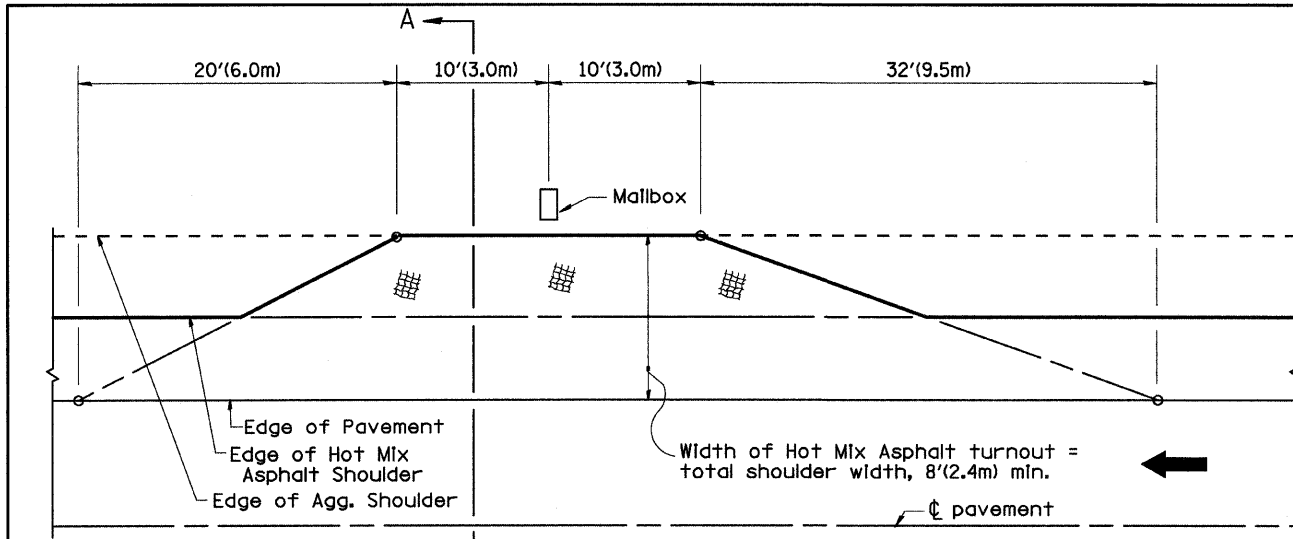
F.A.S. RTE.	SECTION	COUNTY	TOTAL SHEETS	SHEET NO.
206	04-00094-02-RS	MERCER COUNTY	18	12
STA. 114+50 TO STA. 121+40.01				
FED. ROAD DIST. NO. 7			ILLINOIS	



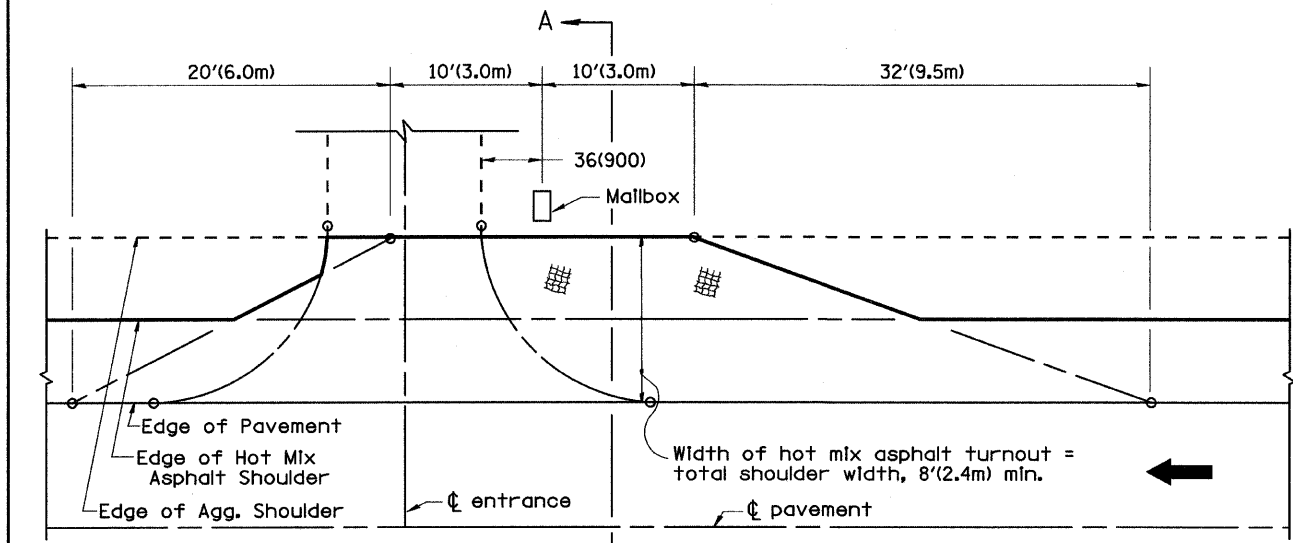
BENCHMARKS:
 BM #1: CENTER OF EXISTING BRIDGE DECK
 ELEV. 683.02



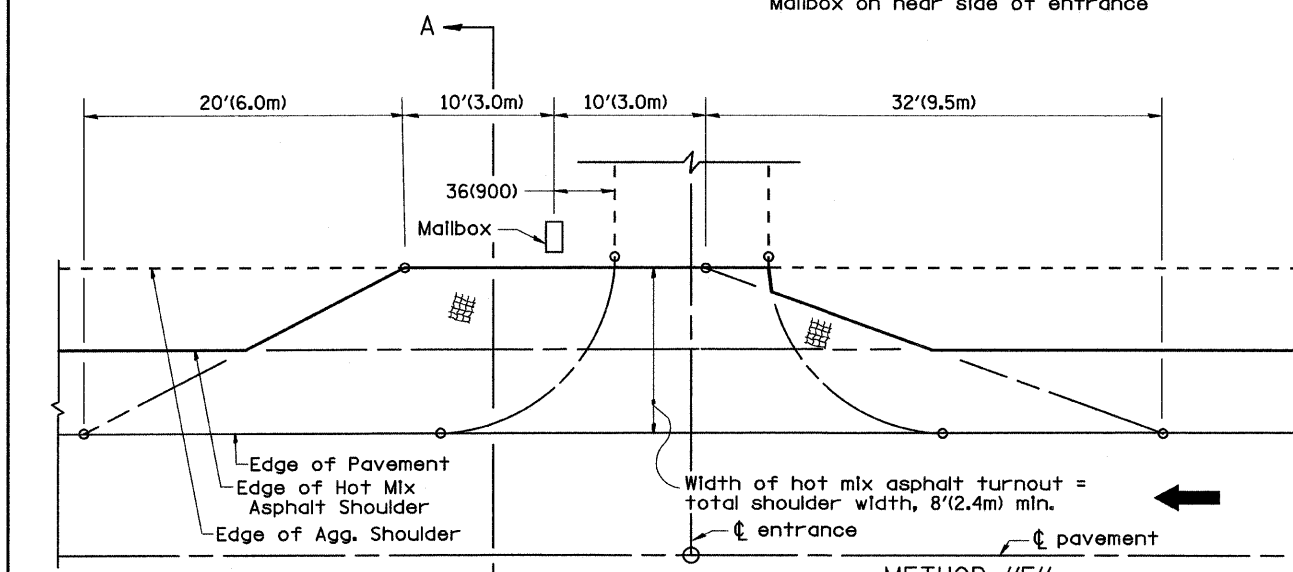
2025/04/01 10:11:00 AM, User: jay@hwy.com, Project: 114+50 - 121+40.01, Station: 114+50.00, Elevation: 687.20



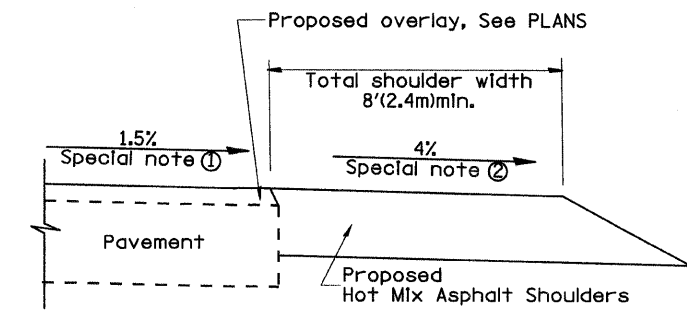
METHOD "T"
Typical Application



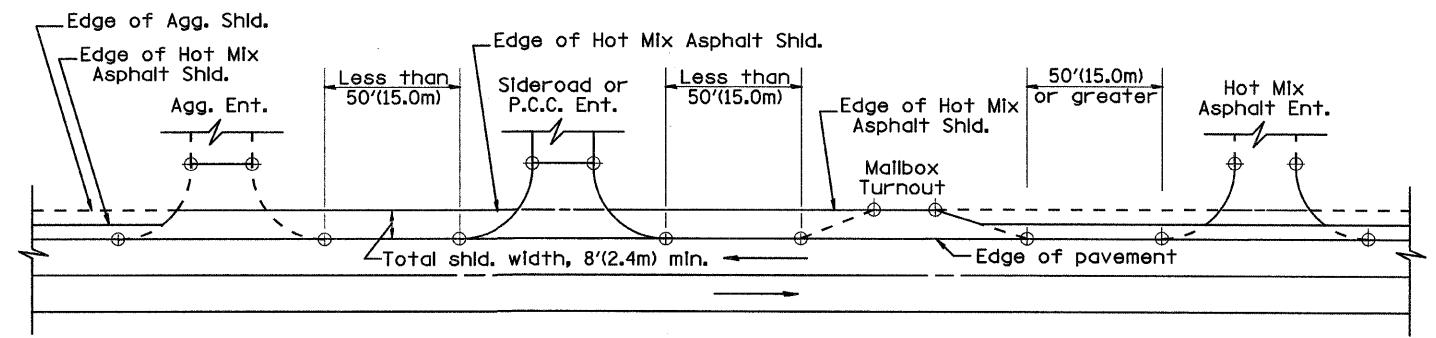
METHOD "N"
Mailbox on near side of entrance



METHOD "F"
Mailbox on far side of entrance



SECTION A-A



DETAIL A

SHOULDER TREATMENT FOR CLOSELY SPACED SIDEROADS, ENTRANCES, AND/OR MAILBOX TURNOUTS

GENERAL NOTES

1. Mailbox turnouts shall slope away from the pavement edge at a rate equal to the shoulder slope. See SECTION A-A.
2. The total shoulder width, 8'(2.4m) minimum, shall be paved between sideroads entrances and/or mailbox turnouts at locations where the distance between radius or taper control points is less than 50'(15.0m). See DETAIL A.
3. Mailboxes shall be mounted such that the face of the mailbox is 6(150) to 12(300) and the post a minimum of 24(600) from the edge of the turnout surfacing.

SPECIAL NOTES

- ① The mainline pavement cross-slope is 1.5% for tangent alignment. See PLANS for cross-slope on super-elevated horizontal curves.
- ② The shoulder slope shall control the turnout slope. The standard cross-slope is 4% for tangent alignment. Through super-elevated curves, the maximum pavement-shoulder breakover should not be greater than 10% for shoulders 6'(1.8m) and wider and 12% for shoulders 4'(1.2m) and less. Where 12(300) paved shoulders are provided, the breakover should be at the edge of the paved shoulder rather than at the pavement edge.

All dimensions are in inches (millimeters) unless otherwise noted.

DESIGNER NOTES:
 1. THIS DRAWING REPLACES STATE STANDARD 406201
 2. DESIGNER SHOULD CONSULT CHAPTER 49 OF THE BDE MANUAL

01-01-97	RENUM. C-90.01, NEW REVISION BOX	T.P.
07-01-97	REVISE DESIGNER NOTES	J.A.
09-15-05	REVISED DESIGNER NOTE	M.M.A.
10-16-06	REVISED TO 2007 SPEC.	M.A.

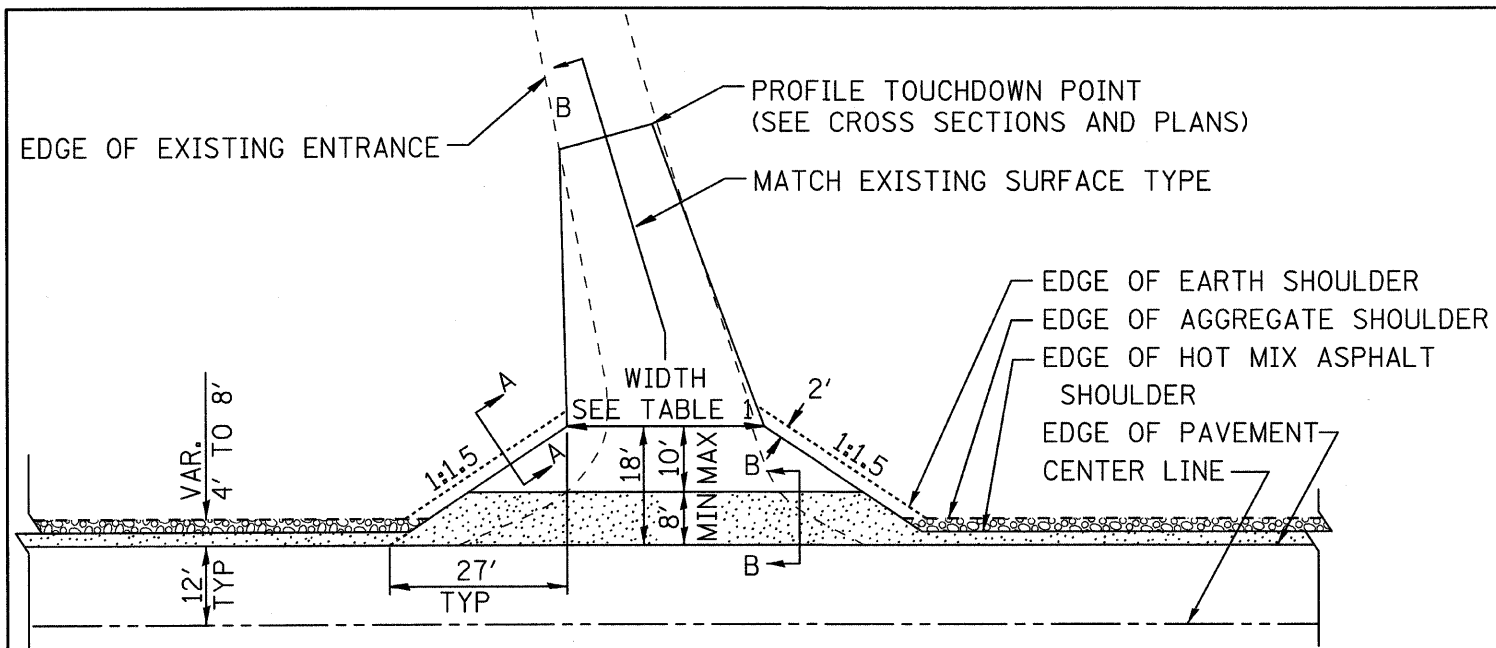
STATE OF ILLINOIS
DEPARTMENT OF TRANSPORTATION

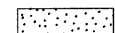
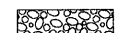
MAILBOX TURNOUTS FOR "3R" PROJECTS

F.A. RTE.	SECTION	COUNTY	TOTAL SHEETS	SHEET NO.
206	04-00094-02-RS	MERCER	18	13
FED. ROAD DIST. NO.			ILLINOIS FED. AID PROJECT	
			CONTRACT NO.	

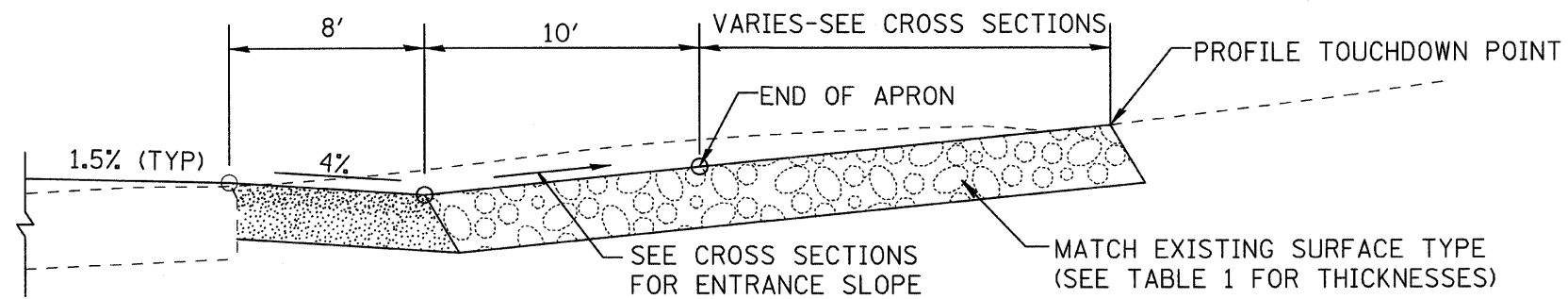
NOT TO SCALE

CADD STD. 406201-D4

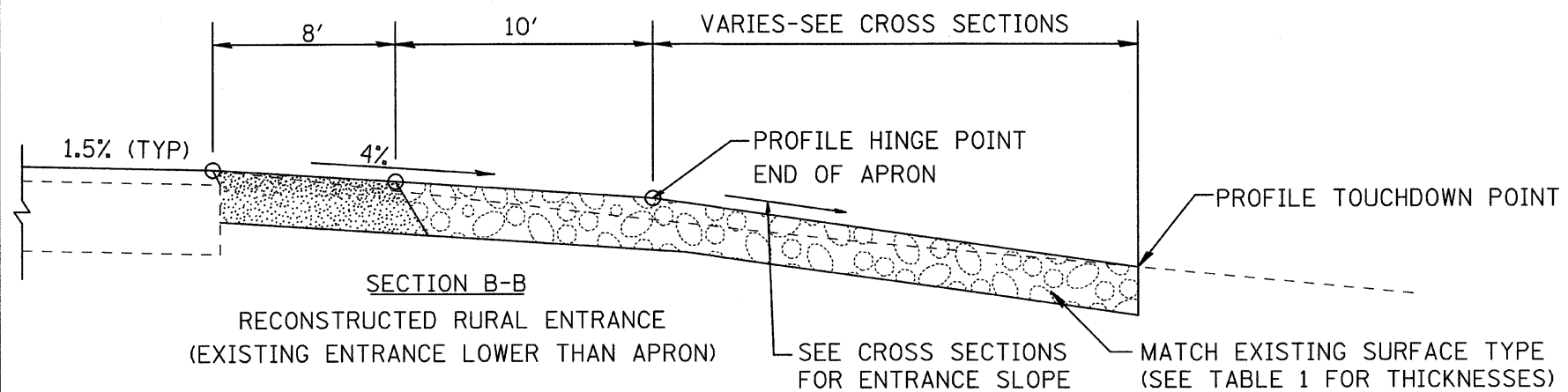


 HOT MIX ASPHALT SHOULDER, 8"
 AGGREGATE SHOULDER, TYPE B, 6"

PLAN
 COMMERCIAL / FARM-RELATED ENTRANCE

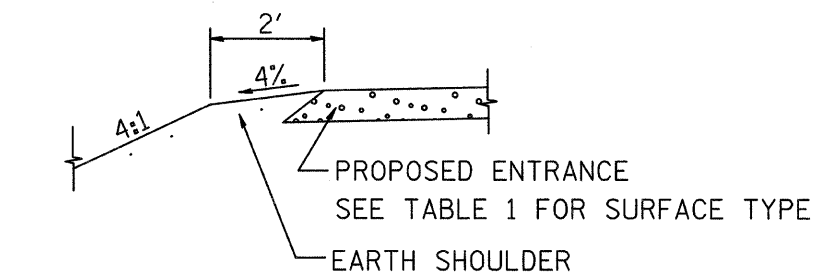


SECTION B-B
 RECONSTRUCTED RURAL ENTRANCE
 (EXISTING ENTRANCE HIGHER THAN APRON)



SECTION B-B
 RECONSTRUCTED RURAL ENTRANCE
 (EXISTING ENTRANCE LOWER THAN APRON)

TABLE 1				
RURAL ENTRANCE DESIGN				
ELEMENT	NON-COMMERCIAL		NON-COMMERCIAL W/ LARGE FARM EQUIPMENT	COMMERCIAL
	12'(3.6m) Min.	24'(7.2m) Max.	20' (6.1m)Max.	30' (9.0m)Max.
WIDTH (W)	12'(3.6m) Min.	24'(7.2m) Max.	20' (6.1m)Max.	30' (9.0m)Max.
FLARE	1:1.5			
MAX. GRADE (G)	12%		10%	
SURFACE TYPE				
INCIDENTAL HOT MIX ASPHALT SURFACING	6"		8"	
AGGREGATE SURFACE COURSE	6"		8"	
PCC DRIVEWAY PAVEMENT	6"		7"	

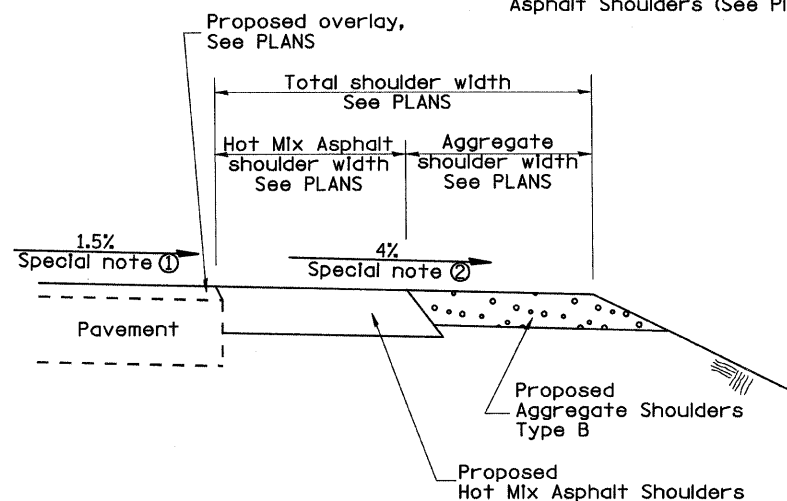
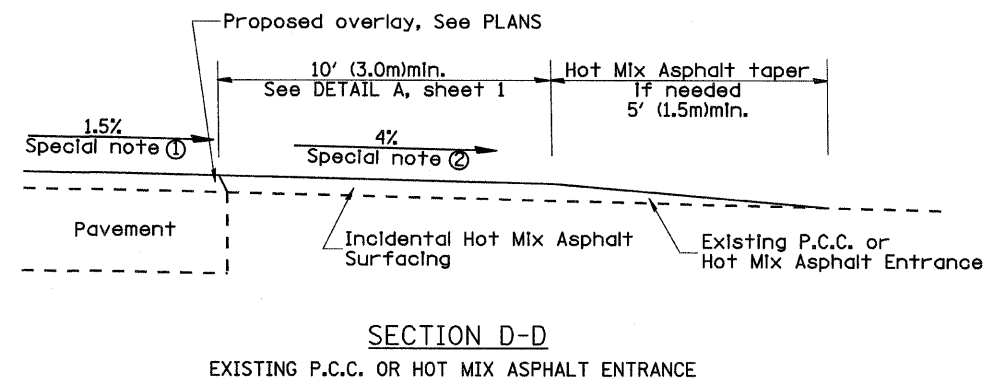
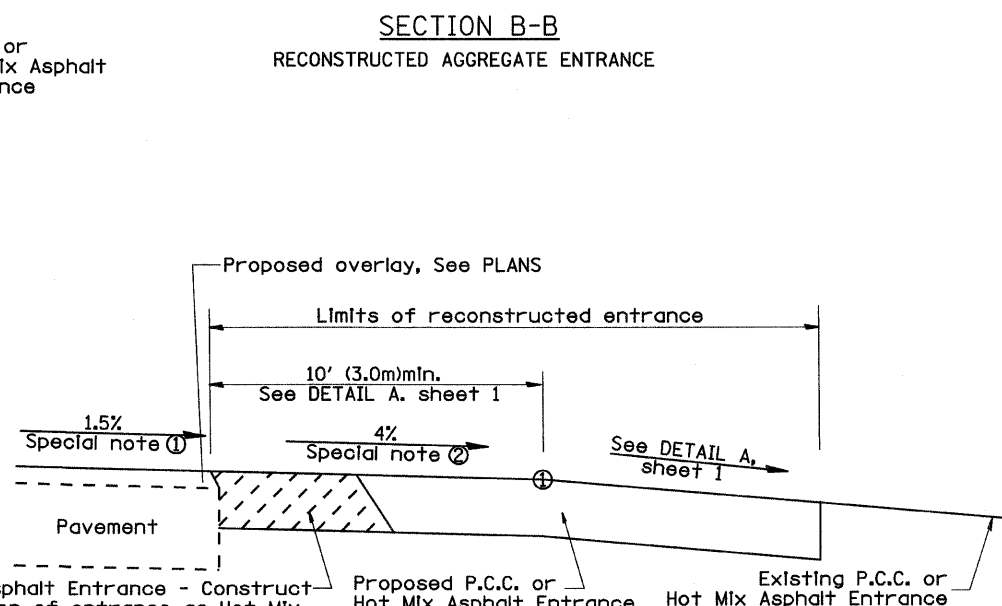
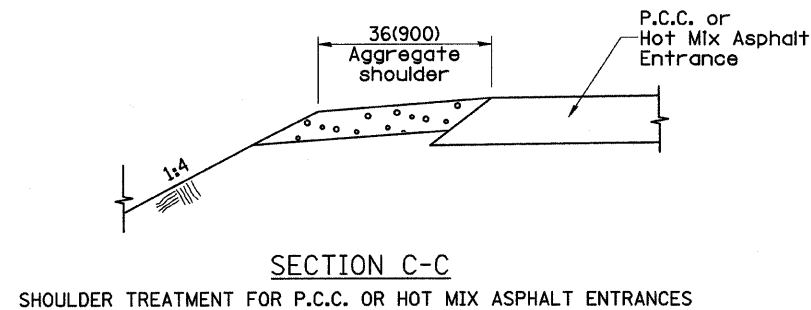
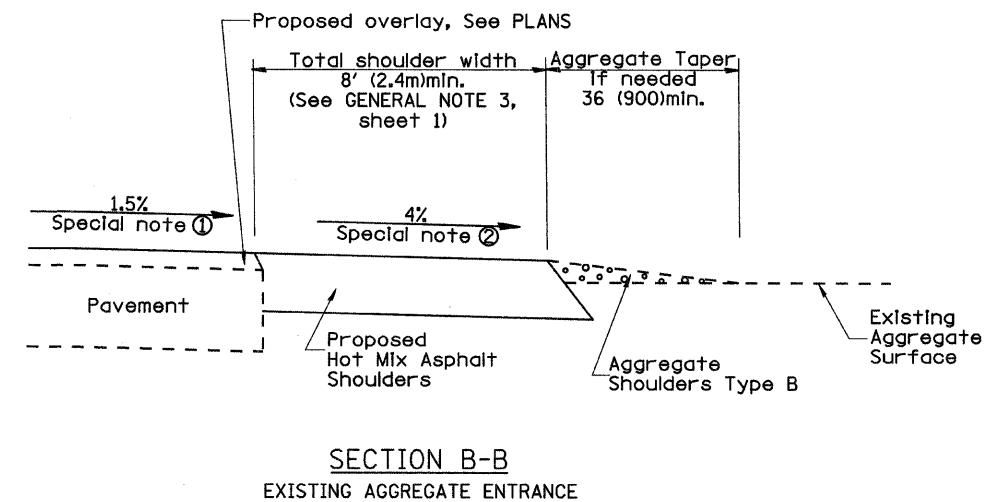
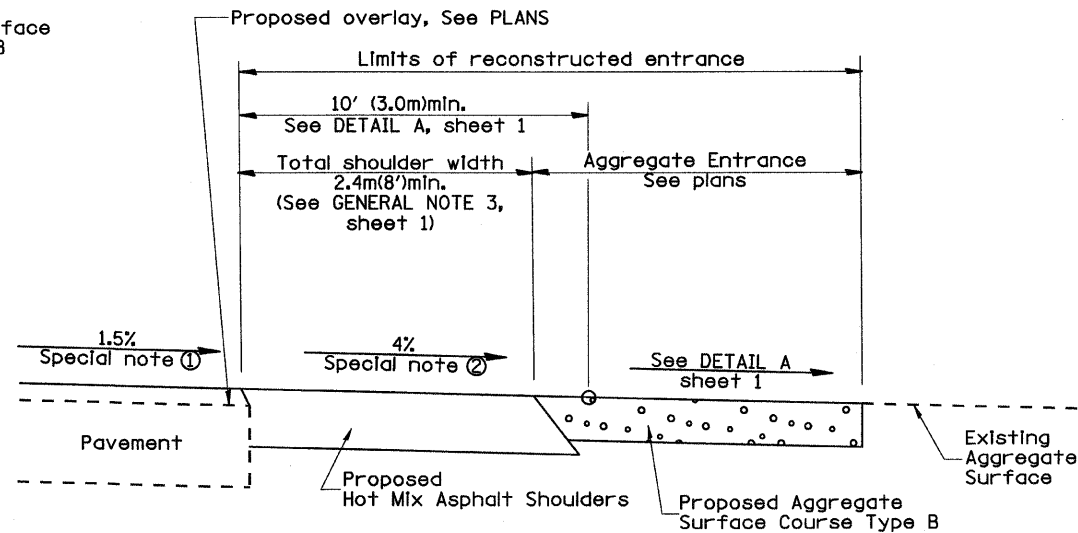
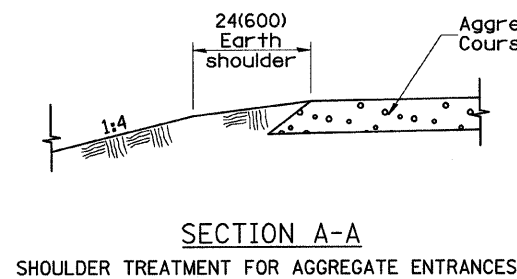


SECTION A-A
 SHOULDER TREATMENT FOR RURAL ENTRANCES

GENERAL NOTES

- ENTRANCES SHALL SLOPE AWAY FROM THE PAVEMENT AT A RATE EQUAL TO THE SHOULDER SLOPE FOR A MINIMUM DISTANCE OF 8'.
- A MINIMUM 8' PAVED SHOULDER SHALL BE CONSTRUCTED BETWEEN LOCATIONS WHERE THE RURAL ENTRANCE IS LESS THAN 50' FROM AN ADJACENT SIDEROAD, ENTRANCE OR MAILBOX TURNOUT.
- A TAPER RATE OF 5:1 IS DESIRABLE WHEN TRANSITING FROM THE RURAL ENTRANCE WIDTH SHOWN IN TABLE 1, TO THE EXISTING ENTRANCE WIDTH.

All dimensions are in inches (millimeters) unless otherwise noted.



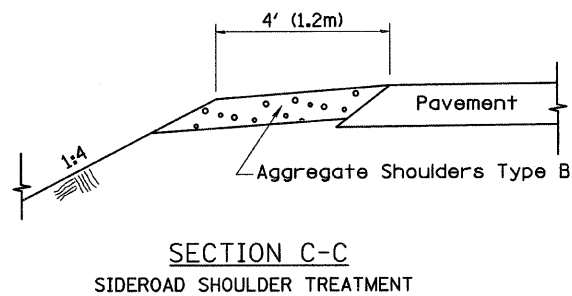
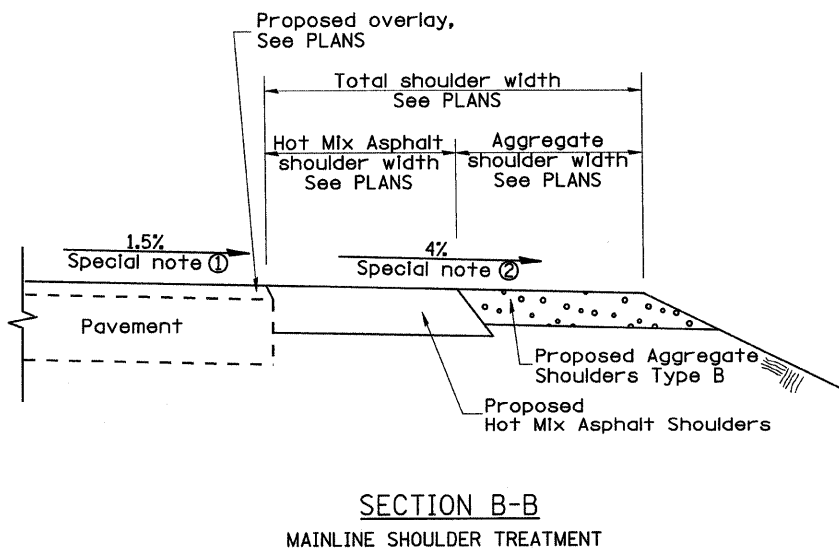
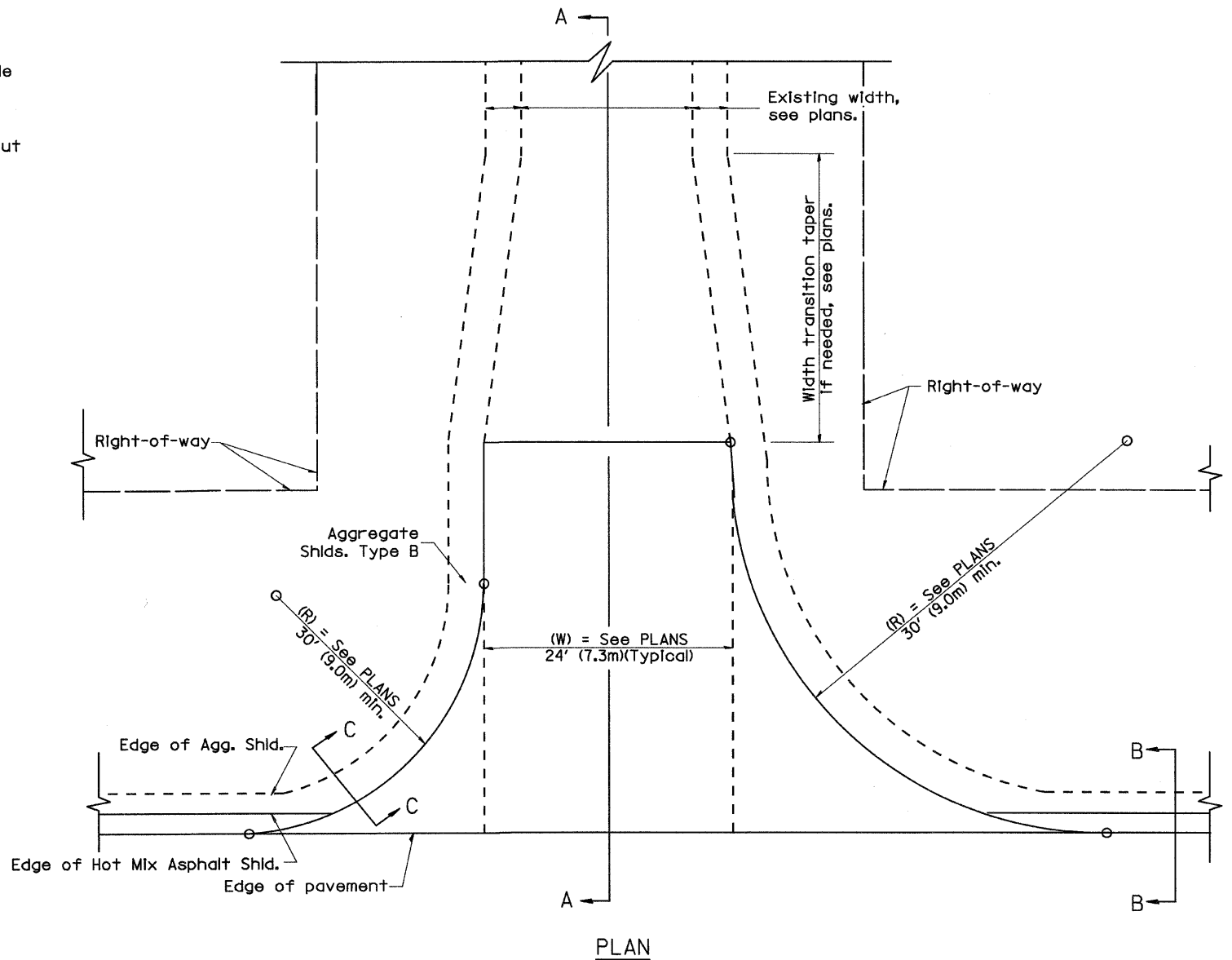
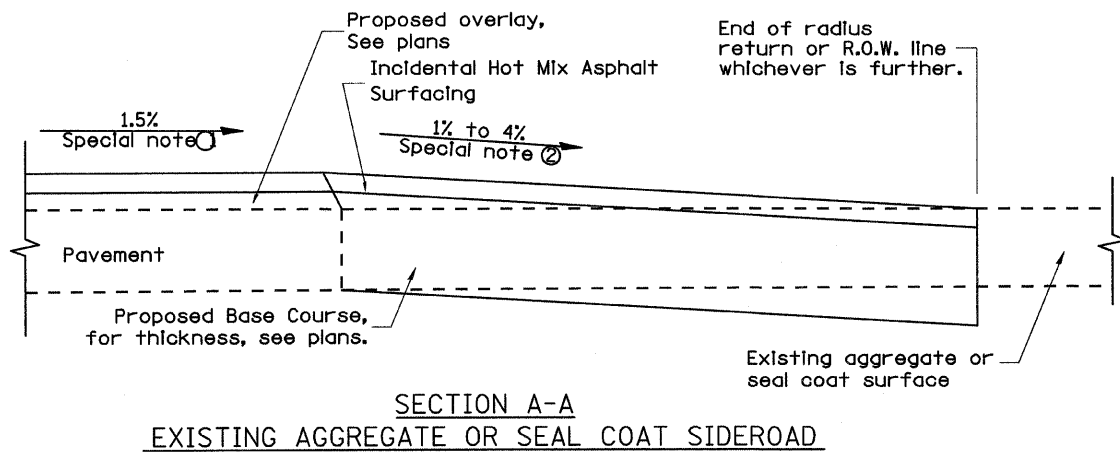
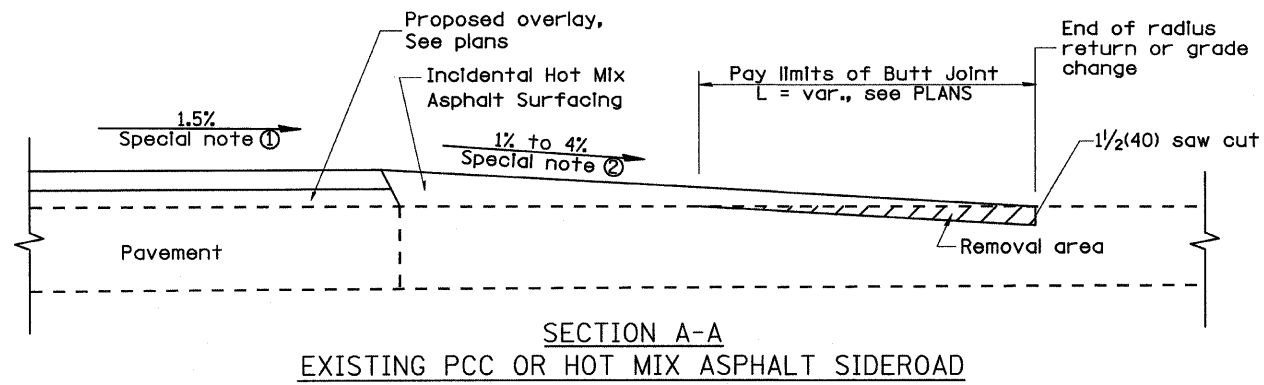
SPECIAL NOTES

- ① The mainline pavement cross-slope is 1.5% for tangent alignment. See PLANS for cross-slope on super-elevated horizontal curves.
- ② The shoulder slope shall control the entrance profile for a distance of 10' (3.0m) minimum from the pavement edge. The shoulder cross-slope is 4% for tangent alignment. Through super-elevated curves, the maximum pavement-shoulder breakover should not be greater than 10% for shoulders 6' (1.8m) and wider and 12% for shoulders 4' (1.2m) and less. Where 12' (366cm) paved shoulders are provided, the breakover should be at the edge of the paved shoulder rather than at the pavement edge.

All dimensions are in inches (millimeters) unless otherwise noted.

STATE OF ILLINOIS DEPARTMENT OF TRANSPORTATION				RURAL ENTRANCES FOR "3R" PROJECTS				F.A. RTE. SECTION COUNTY TOTAL SHEETS SHEET NO. 206 04-00094-02-RS MERCER 18 15	
				NOT TO SCALE				SHT. 2 OF 2 CADD STD. 406301-D4	
								CONTRACT NO. ILLINOIS FED. AID PROJECT	

DESIGNER NOTES:
1. DESIGNER SHOULD CONSULT CHAPTER 49 OF THE BDE MANUAL.



SPECIAL NOTES

- ① The mainline pavement cross-slope is 1.5% for tangent alignment. See Plans for cross-slope on super-elevated horizontal curves.
- ② The sideroad profile should drain away from the mainline at 1% to 4% for 50' (15.0m) to 100' (30.0m), or as a minimum to the end of the radius return. When the sideroad is on the high side of a mainline super-elevated curve, - 2% maximum should be provided in order to minimize breakover at the pavement edge. See plans for sideroad profiles.

All dimensions are in inches (millimeters) unless otherwise noted.

01-01-97	RENUM. C-105.02, NEW REVISION BOX	T.P.		
07-01-97	REVISE DESIGNER NOTES	J.A.		
09-15-05	REVISED DESIGNER NOTE	M.M.A.		
10-16-06	REVISED TO 2007 SPEC.	M.A.		

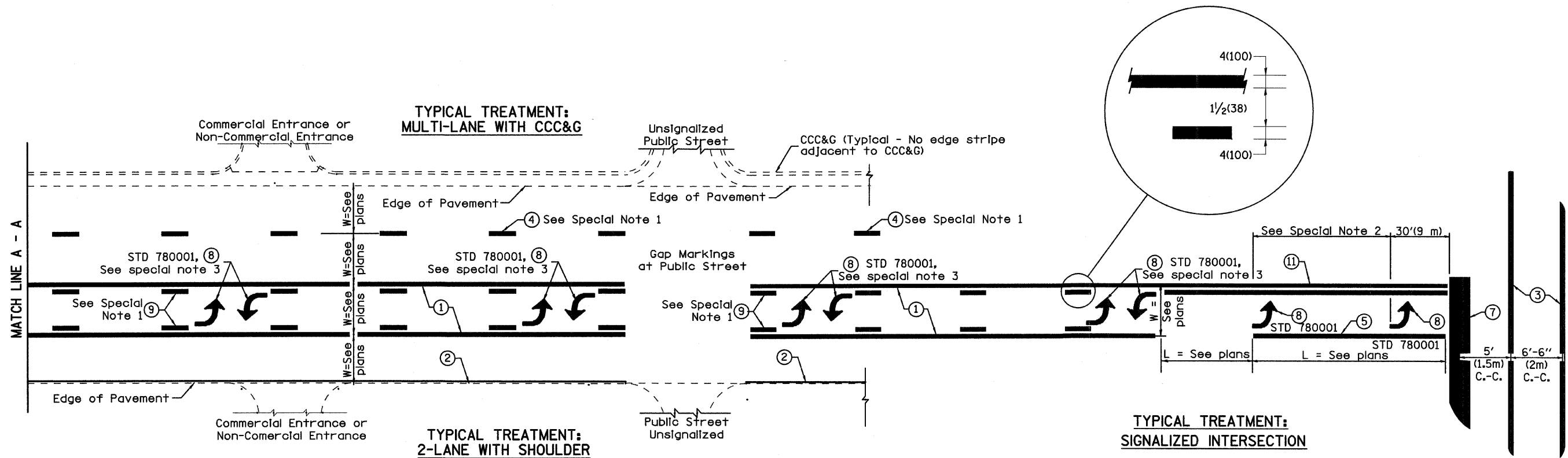
**STATE OF ILLINOIS
DEPARTMENT OF TRANSPORTATION**

RURAL SIDEROADS FOR "3R" PROJECTS

NOT TO SCALE

CADD STD. 406401-D4

F.A. RTE.	SECTION	COUNTY	TOTAL SHEETS	SHEET NO.
206	04-00094-02-RS	MERCER	18	16
FED. ROAD DIST. NO. ILLINOIS FED. AID PROJECT			CONTRACT NO.	



FLUSH PAVED MEDIAN: TWO-WAY LEFT TURN LANE WITH ONE-WAY LEFT TURN LANE AT SIGNALIZED INTERSECTION

TYPICAL PAVEMENT MARKING LEGEND

(Note: This is a District Standard Legend. Some elements may not apply to specific project.)

- ① 4(100) Solid (Yellow)
- ② 4(100) Solid (White)
- ③ 2-6(150) Crosswalk @ 6'-6" (2m)min C.-C. (White)
2-8(200) Crosswalk @ 6'-6" (2m)min C.-C. (White) (When traffic signals are present.)
- ④ 6(150) Skip-Dash (White) (See Special Note 1)
- ⑤ 8(200) Solid (White)
- ⑥ 12(300) Diagonal (White) (Item ⑥ is shown on Std. 780001)
- ⑦ 24(600) Stop Bar (White)
- ⑧ Letters & Arrows (See Std. 780001 and Special Notes 2 & 3)
- ⑨ 4(100) Skip-Dash (Yellow) (See Special Note 1)
- ⑩ 12(300) Diagonal (Yellow) (See Table A)
- ⑪ 4(100) Double Solid (Yellow) See Table A

SPECIAL NOTES

1. Skip-Dash markings will be centered between both ends of city blocks and shall be placed in alignment transversely across the pavement.
2. The following shall apply to arrows located in one-way left turn lanes:
 - A. A minimum of two (2) arrows is required.
 - B. The maximum spacing between arrows is 80' (24 m).
 - C. Arrows shall be evenly spaced if three (3) or more are required.
3. The following shall apply to arrow pairs located in two-way left turn lanes:
 - A. A minimum of two (2) arrow pairs is required.
 - B. The maximum spacing between arrow pairs is 200' (61 m).
 - C. Arrow pairs shall be evenly spaced if three (3) or more are required.
 - D. The spacing between Bi Directional Left Turn Arrows is 33' (10 m).

GENERAL NOTES

1. Refer to State Standard 780001 for additional Pavement Markings including letters & arrows.
2. See Plans for Pavement Markings adjacent to curbed Islands and medians, and through lane reductions.

DESIGNER NOTES:
1. Include State Standard 780001 (Typical Pavement Markings)

01-01-97	RENUM. F-8.03, NEW REVISION BOX	T.P.	10-16-06	REVISED TO 2007 SPEC.	STATE OF ILLINOIS DEPARTMENT OF TRANSPORTATION	TYPICAL PAVEMENT MARKINGS	F.A. RTE.	SECTION	COUNTY	TOTAL SHEETS	SHEET NO.	
02-07-97	ADD BI DIRECTIONAL DIMENSION	J.A.					206	04-00094-02-RS	MERCER	18	17	
10-97	CORRECT BI DIRECTIONAL DIMENSION	J.A.					SHT. 1 OF 2 CADD STD. 780001-D4					
08-02	ADD CROSSWALK DIMS. WITH T.S.	M.A.					CONTRACT NO. ILLINOIS FED. AID PROJECT					

