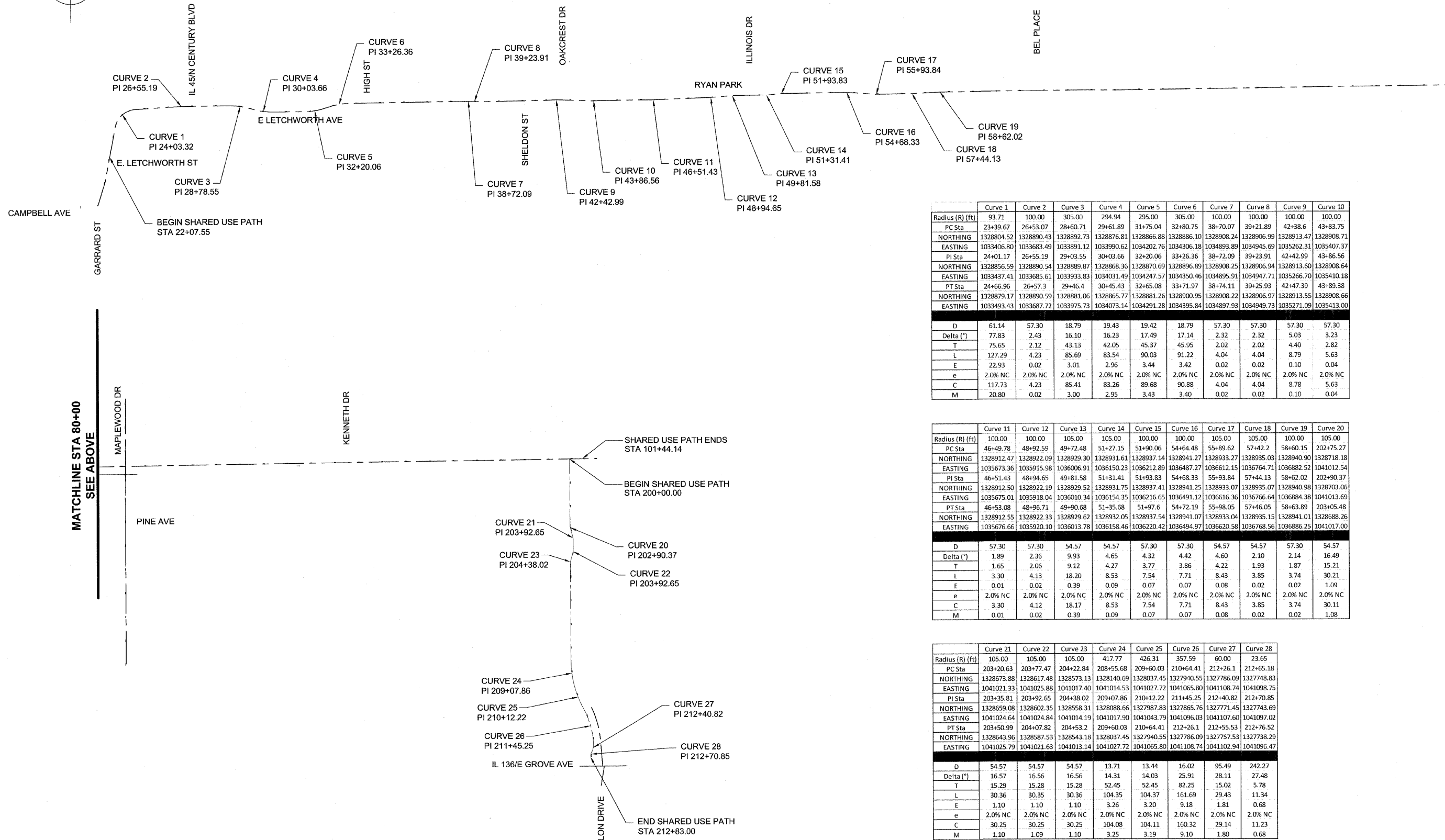


DATE	BY
REVISION	BY
PLANNED	BY
NOTED	BY
FILE NAME	

DATE	BY
REVISION	BY
PLANNED	BY
NOTED	BY
FILE NAME	



	Curve 1	Curve 2	Curve 3	Curve 4	Curve 5	Curve 6	Curve 7	Curve 8	Curve 9	Curve 10
Radius (R) (ft)	93.71	100.00	305.00	294.94	295.00	305.00	100.00	100.00	100.00	100.00
PC Sta	23+39.67	26+53.07	28+60.71	29+61.89	31+75.04	32+80.75	38+70.07	39+21.89	42+38.6	43+83.75
NORTHING	1328804.52	1328890.43	1328892.73	1328876.81	1328866.88	1328866.10	1328908.24	1328906.99	1328913.47	1328908.71
EASTING	1033406.80	1033683.49	1033891.12	1033990.62	1034202.76	1034306.18	1034893.89	1034945.69	1035262.31	1035407.37
PI Sta	24+01.17	26+55.19	29+03.55	30+03.66	32+20.06	33+26.36	38+72.09	39+23.91	42+42.99	43+86.56
NORTHING	1328856.59	1328890.54	1328889.87	1328868.36	1328870.69	1328896.89	1328908.25	1328906.94	1328913.60	1328908.64
EASTING	1033437.41	1033685.61	1033933.83	1034031.49	1034247.57	1034350.46	1034895.91	1034947.71	1035266.70	1035410.18
PT Sta	24+66.96	26+57.3	29+46.4	30+45.43	32+65.08	33+71.97	38+74.11	39+25.93	42+47.39	43+89.38
NORTHING	1328879.17	1328890.59	1328881.06	1328865.77	1328881.26	1328900.95	1328908.22	1328906.97	1328913.55	1328908.66
EASTING	1033493.43	1033687.72	1033975.73	1034073.14	1034291.28	1034395.84	1034897.93	1034949.73	1035271.09	1035413.00
D	61.14	57.30	18.79	19.43	19.42	18.79	57.30	57.30	57.30	57.30
Delta (°)	77.83	2.43	16.10	16.23	17.49	17.14	2.32	2.32	5.03	3.23
T	75.65	2.12	43.13	42.05	45.37	45.95	2.02	2.02	4.40	2.82
L	127.29	4.23	85.69	83.54	90.03	91.22	4.04	4.04	8.79	5.63
E	22.93	0.02	3.01	2.96	3.44	3.42	0.02	0.02	0.10	0.04
e	2.0% NC	2.0% NC	2.0% NC	2.0% NC	2.0% NC	2.0% NC	2.0% NC	2.0% NC	2.0% NC	2.0% NC
C	117.73	4.23	85.41	83.25	89.68	90.88	4.04	4.04	8.78	5.63
M	20.80	0.02	3.00	2.95	3.43	3.40	0.02	0.02	0.10	0.04

	Curve 11	Curve 12	Curve 13	Curve 14	Curve 15	Curve 16	Curve 17	Curve 18	Curve 19	Curve 20
Radius (R) (ft)	100.00	100.00	105.00	105.00	100.00	100.00	105.00	105.00	100.00	105.00
PC Sta	46+49.78	48+92.59	49+72.48	51+27.15	51+90.06	54+64.48	55+89.62	57+42.2	58+60.15	202+75.27
NORTHING	1328912.47	1328922.09	1328929.30	1328931.61	1328937.14	1328941.27	1328935.03	1328930.90	1328940.90	1328718.18
EASTING	1035673.36	1035915.98	1036006.91	1036150.23	1036212.89	1036487.27	1036612.15	1036764.71	1036882.52	1041012.54
PI Sta	46+51.43	48+94.65	49+81.58	51+31.41	51+93.83	54+68.33	55+93.84	57+44.13	58+62.02	202+90.37
NORTHING	1328912.50	1328922.19	1328929.52	1328931.75	1328937.41	1328941.25	1328933.07	1328935.07	1328940.98	1328703.06
EASTING	1035675.01	1035918.04	1036010.34	1036154.35	1036216.65	1036491.12	1036616.36	1036766.64	1036884.38	1041013.69
PT Sta	46+53.08	48+96.71	49+90.68	51+35.68	51+97.6	54+72.19	55+98.05	57+46.05	58+63.89	203+05.48
NORTHING	1328912.55	1328922.33	1328929.62	1328932.05	1328937.54	1328941.07	1328933.04	1328935.15	1328941.01	1328688.26
EASTING	1035676.66	1035920.10	1036013.78	1036158.46	1036220.42	1036494.97	1036620.58	1036768.56	1036886.25	1041017.00
D	57.30	57.30	54.57	54.57	57.30	57.30	54.57	54.57	57.30	54.57
Delta (°)	1.89	2.36	9.93	4.65	4.32	4.42	4.60	2.10	2.14	16.49
T	1.65	2.06	9.12	4.27	3.77	3.86	4.22	1.93	1.87	15.21
L	3.30	4.13	18.20	8.53	7.54	7.71	8.43	3.85	3.74	30.21
E	0.01	0.02	0.39	0.09	0.07	0.07	0.08	0.02	0.02	1.09
e	2.0% NC	2.0% NC	2.0% NC	2.0% NC	2.0% NC	2.0% NC	2.0% NC	2.0% NC	2.0% NC	2.0% NC
C	3.30	4.12	18.17	8.53	7.54	7.71	8.43	3.85	3.74	30.11
M	0.01	0.02	0.39	0.09	0.07	0.07	0.08	0.02	0.02	1.08

	Curve 21	Curve 22	Curve 23	Curve 24	Curve 25	Curve 26	Curve 27	Curve 28
Radius (R) (ft)	105.00	105.00	105.00	417.77	426.31	357.59	60.00	23.65
PC Sta	203+20.63	203+77.47	204+22.84	208+55.68	209+60.03	210+64.41	212+26.1	212+65.18
NORTHING	1328673.88	1328617.48	1328573.13	1328140.69	1328037.45	1327940.55	1327786.09	1327748.83
EASTING	1041021.33	1041025.88	1041017.40	1041014.53	1041027.72	1041065.80	1041108.74	1041098.75
PI Sta	203+35.81	203+92.65	204+38.02	209+07.86	210+12.22	211+45.25	212+40.82	212+70.85
NORTHING	1328659.08	1328602.35	1328558.31	1328088.66	1327987.83	1327865.76	1327771.45	1327743.69
EASTING	1041024.64	1041024.84	1041014.19	1041017.90	1041043.79	1041096.03	1041107.60	1041097.02
PT Sta	203+50.99	204+07.82	204+53.2	209+60.03	210+64.41	212+26.1	212+55.53	212+76.52
NORTHING	1328643.96	1328587.53	1328543.18	1328037.45	1327940.55	1327786.09	1327757.53	1327738.29
EASTING	1041025.79	1041021.63	1041013.14	1041027.72	1041065.80	1041108.74	1041102.94	1041096.47
D	54.57	54.57	54.57	13.71	13.44	16.02	95.49	242.27
Delta (°)	16.57	16.56	16.56	14.31	14.03	25.91	28.11	27.48
T	15.29	15.28	15.28	52.45	52.45	82.25	15.02	5.78
L	30.36	30.35	30.36	104.35	104.37	161.69	29.43	11.34
E	1.10	1.10	1.10	3.26	3.20	9.18	1.81	0.68
e	2.0% NC	2.0% NC	2.0% NC	2.0% NC	2.0% NC	2.0% NC	2.0% NC	2.0% NC
C	30.25	30.25	30.25	104.08	104.11	160.32	29.14	11.23
M	1.10	1.09	1.10	3.25	3.19	9.10	1.80	0.68

MATCHLINE STA 80+00
SEE BELOW

MATCHLINE STA 80+00
SEE ABOVE