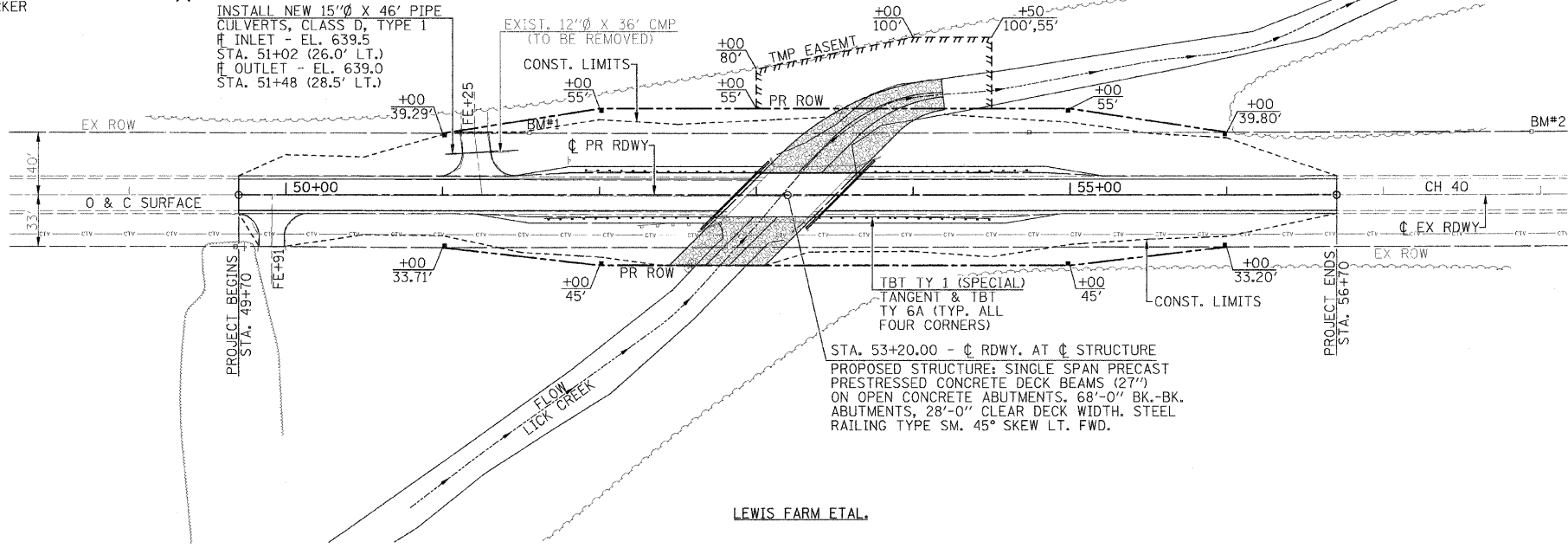
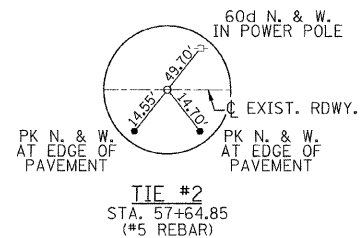
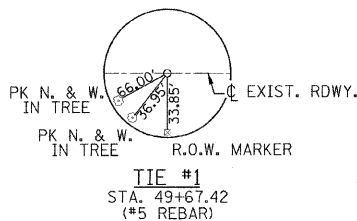


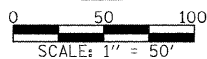
SECTION 11, T. 14 N., R. 8 W. 3rd P.M.

PAUL & FRANCINE LEWIS

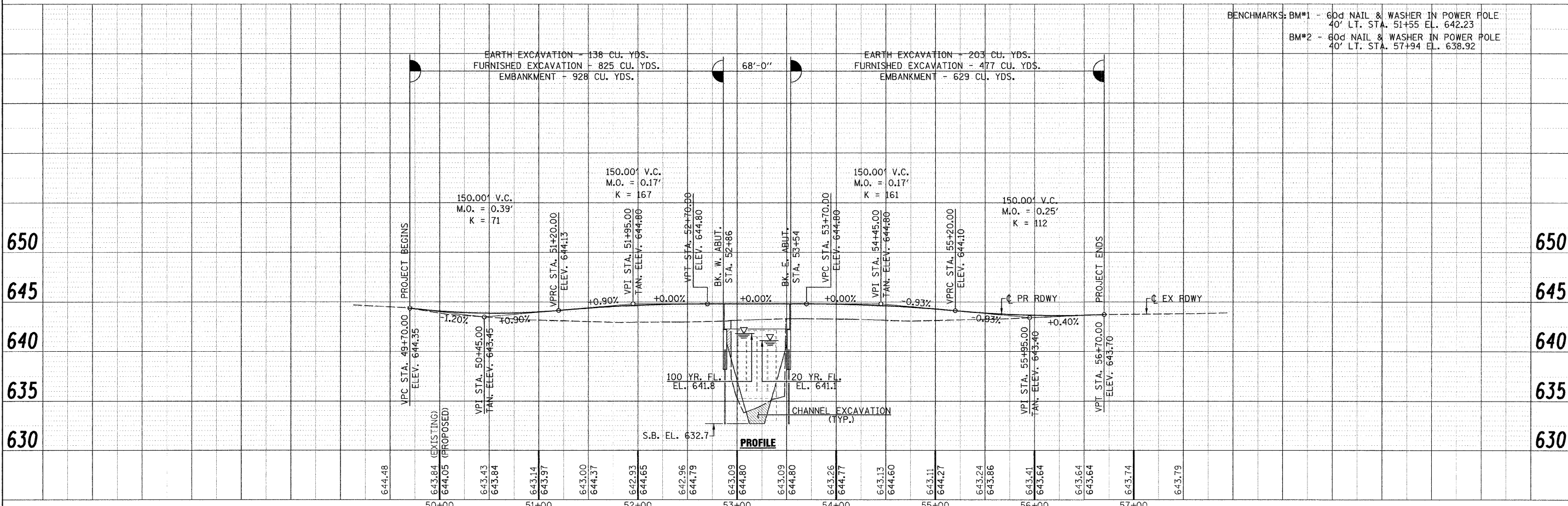


LEWIS FARM ETAL.

PLAN



BENCHMARKS: BM#1 - 60d NAIL & WASHER IN POWER POLE  
40' LT. STA. 51+55 EL. 642.23  
BM#2 - 60d NAIL & WASHER IN POWER POLE  
40' LT. STA. 57+94 EL. 638.92



PROFILE

DATE	
BY	
PLAN	
DATE	
BY	
PROFILE	
DATE	
BY	

DATE	
BY	
PROFILE	
DATE	
BY	

FILE NAME =	USER NAME = #USER#	DESIGNED -	REVISED -	<p><b>Allen Henderson &amp; Associates, Inc.</b> Civil and Structural Engineers Springfield, IL. 62703 Phone: (217)544-8033 IL Design Firm No. 184-001907</p>	<p><b>PLAN &amp; PROFILE</b></p> <p>SCALE: 1" = 50'    SHEET NO. 5 OF 18 SHEETS    STA. 49+70.00 TO STA. 56+70.00</p>	C.H. RTE.	SECTION	COUNTY	TOTAL SHEETS	SHEET NO.
#FILE#		CHECKED -	REVISED -			40	08-00054-01-BR	SANGAMON	18	5
PLOT SCALE = #SCALE#		DRAWN -	REVISED -			CONTRACT NO. 93572				
PLOT DATE = #DATE#		CHECKED -	REVISED -			FED. ROAD DIST. NO.    (ILLINOIS) FED. AID PROJECT				