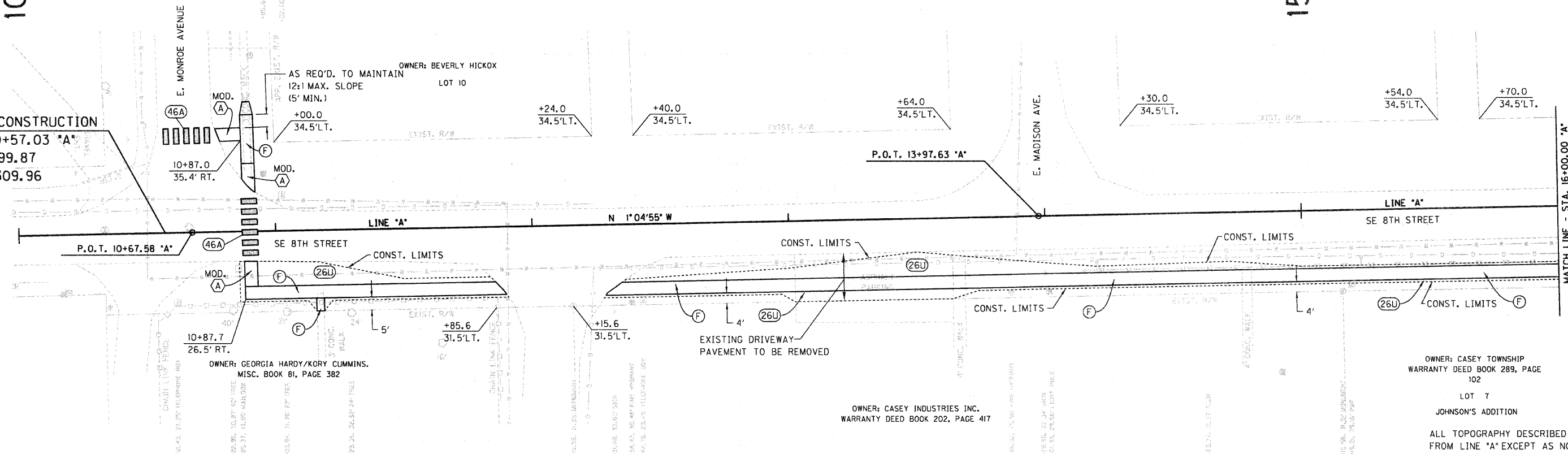


10+00

15+00

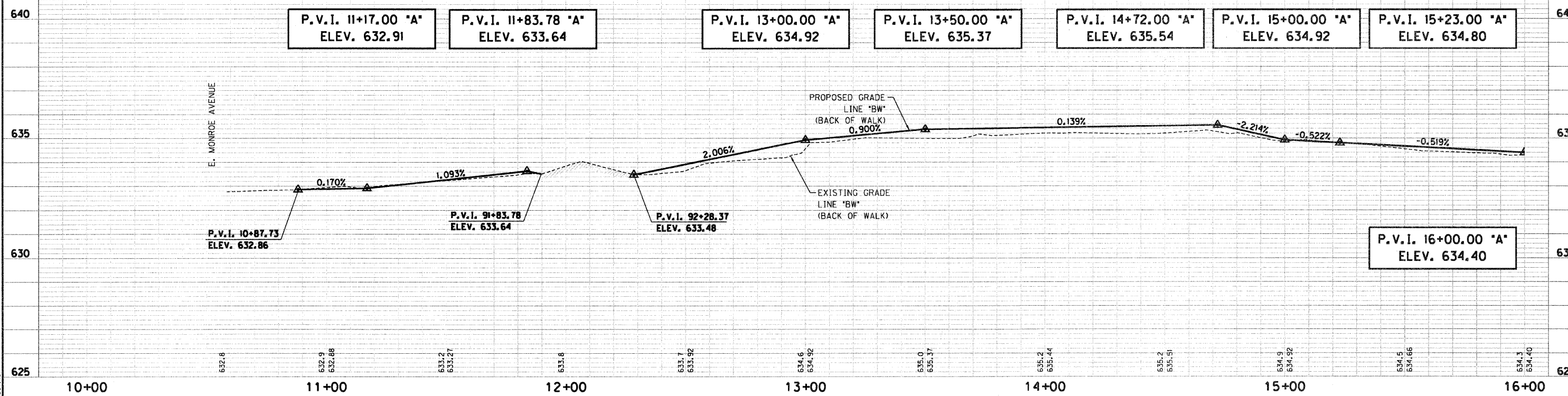


BEGIN CONSTRUCTION
STA. 10+57.03 'A'
N=957299.87
E=1083309.96

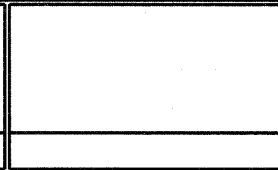
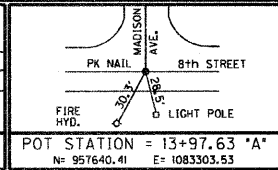
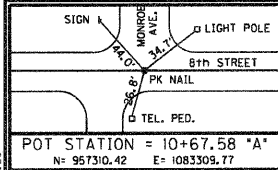


TBM No. 1
SE CORNER OF PORCH (CONCRETE)
@ 407 So. 8th STREET
ELEV = 637.00

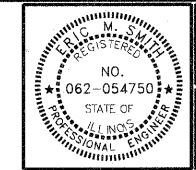
TBM No. 2
TOP SW CORNER OF WEST AC PAD
SW CORNER OF 1st CHRISTIAN CHURCH
ELEV. = 635.79



C:\D:\Noble\2007-213-S Casey SRTS\Design\Cadd\Plan 1000-1600A.dgn
4/19/2012
REVISION 2.0
PDF.plt
12:38:27 PM
1/20



- (F) PORTLAND CEMENT CONCRETE SIDEWALK 4 INCH
- (26U) SEEDING, CLASS IB
- (*) CURB RAMP, TYPE *
- (46A) THERMOPLASTIC PAVEMENT MARKING - LINE 24'



RECOMMENDED FOR APPROVAL: *E. M. Jant*
DESIGN ENGINEER
DATE: 4/19/12

DESIGNED: DWN
DRAWN: DWN
CHECKED: JAK
CHECKED: RSH

ILLINOIS
DEPARTMENT OF TRANSPORTATION
PLAN & PROFILE SHEET
STA. 10+00.00 TO 16+00.00 "A"

HORIZONTAL SCALE 1" = 20'	BRIDGE FILE
VERTICAL SCALE 1" = 2'	SECTION NO. 10-00030-00-SW
SURVEY BOOK 95676	SHEETS 4 of 33
CONTRACT 95676	PROJECT 2007-213