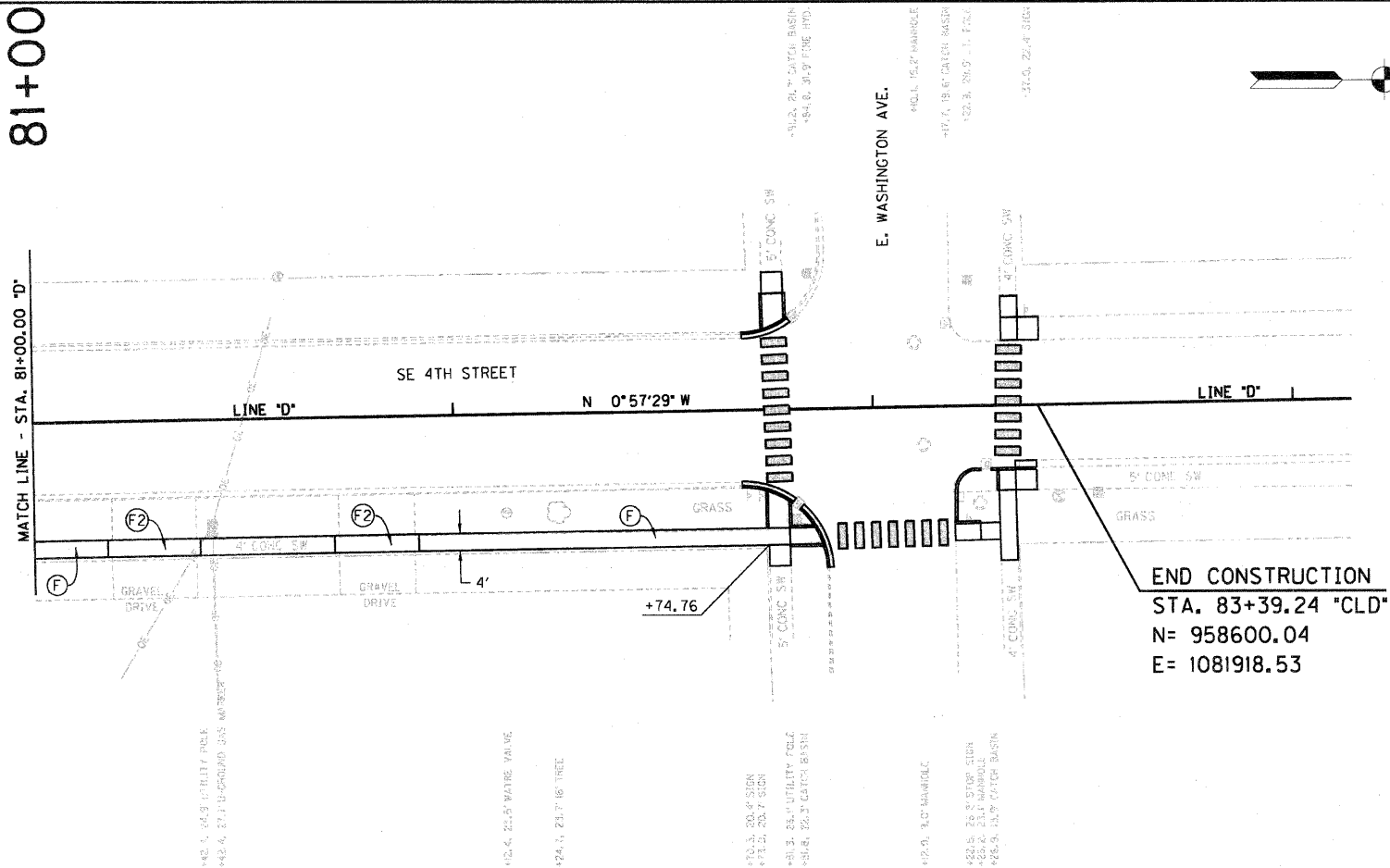


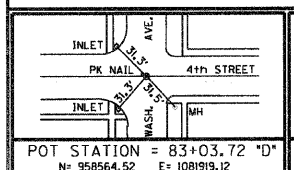
81+00



ALL TOPOGRAPHY DESCRIBED FROM LINE 'D' EXCEPT AS NOTED

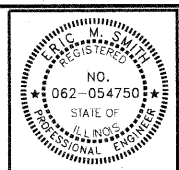
TBM No. 8
SE CORNER OF PORCH 400 E. ADAMS STREET
(.....)
ELEV = 642.93

TBM No. 9
SE CORNER OF PORCH 306 E WASHINGTON STREET
INW COR. 4th & JEFFERSON
ELEV = 643.05



POT STATION = 83+03.72 'D'	N = 958564.52	E = 1081919.12
----------------------------	---------------	----------------

- (F) PORTLAND CEMENT CONCRETE SIDEWALK 4 INCH
- (F2) PORTLAND CEMENT CONCRETE SIDEWALK 6 (OR) 8 INCH (SEE DETAILS FOR DRIVES AND ALLEYS)
- (26U) SEEDING, CLASS 1B
- (M) CURB RAMP, TYPE M



RECOMMENDED FOR APPROVAL	<i>Eric M. Ant</i>	4/19/12
DESIGNED:	DWN	DATE
DRAWN:	DWN	
CHECKED:	JAK	
		RSB

ILLINOIS
DEPARTMENT OF TRANSPORTATION
PLAN & PROFILE SHEET
STA. 81+00.00 TO 85+00.00 "D"

HORIZONTAL SCALE	BRIDGE FILE
1" = 20'	
VERTICAL SCALE	SECTION NO.
	10-00030-00-SW
SURVEY BOOK	SHEETS
	8 OF 33
CONTRACT	PROJECT
95676	2007-213