

15+00

P.I. = 15+14.72
 N = 957242.31
 E = 1082309.31
 DELTA = 17°00'59" RT.
 D = 57'17'45"
 R = 100.00'
 T = 14.96'
 L = 29.70'
 E = 1.11'
 O
 C*8

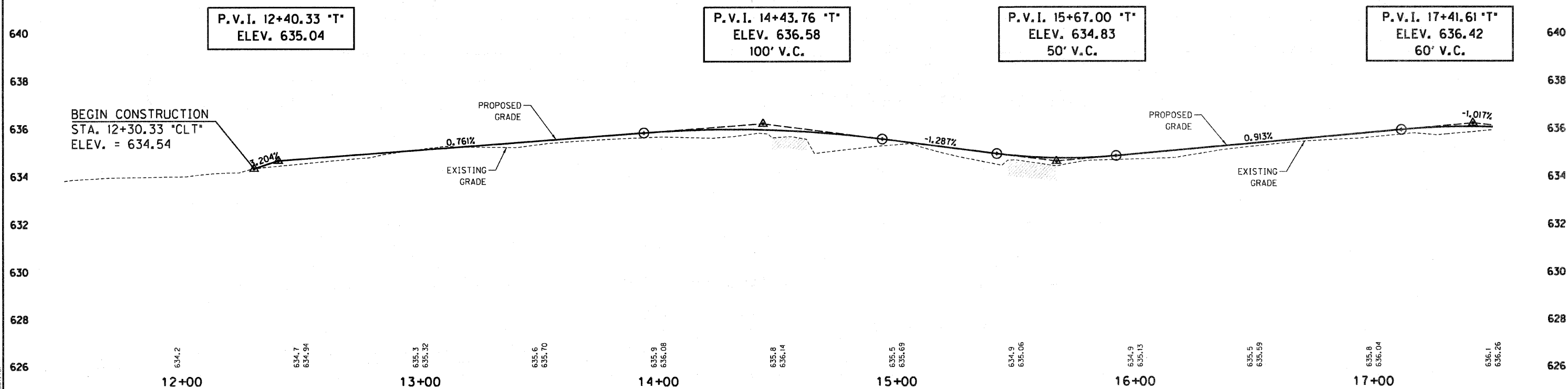
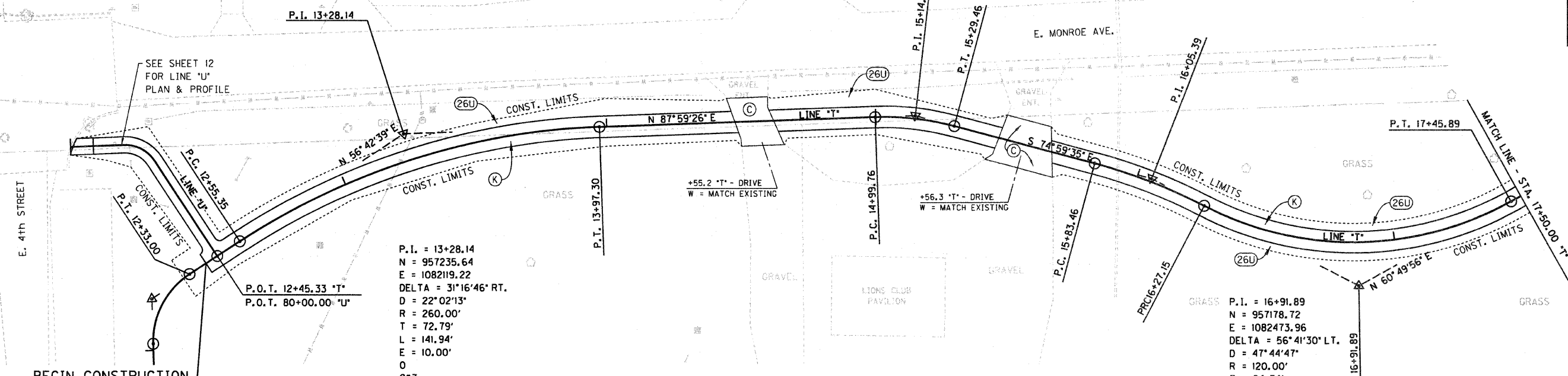
P.I. = 16+05.39
 N = 957218.77
 E = 1082397.10
 DELTA = 12°31'01" RT.
 D = 28°38'52"
 R = 200.00'
 T = 21.93'
 L = 43.69'
 E = 1.20'
 O
 C*9

P.I. = 13+28.14
 N = 957235.64
 E = 1082119.22
 DELTA = 31°16'46" RT.
 D = 22°02'13"
 R = 260.00'
 T = 72.79'
 L = 141.94'
 E = 10.00'
 O
 C*7

P.I. = 16+91.89
 N = 957178.72
 E = 1082473.96
 DELTA = 56°41'30" LT.
 D = 47°44'47"
 R = 120.00'
 T = 64.74'
 L = 118.73'
 E = 16.35'
 O
 C*10

BEGIN CONSTRUCTION
 STA. 12+40.33 *CLT*
 N=957187.44
 E=1082045.81

SEE SHEET 12
 FOR LINE 'U'
 PLAN & PROFILE



C:\Users\Noble\2007-2013\5-Casey_SRTS\Design\Cadd\Path\120-1750-T.dgn
 4/19/2012 12:38:36 PM
 REVISION 2.0
 PDF-PLT
 1/20,000

(M)	CURB RAMP, MID-BLOCK (MOD.)	(K)	FULL DEPTH PAVEMENT
(C)	PORTLAND CEMENT CONCRETE DRIVEWAY PAVEMENT, 6 INCH	(26U)	SEEDING, CLASS 1B
(F)	PORTLAND CEMENT CONCRETE SIDEWALK 4 INCH	(46F)	THERMOPLASTIC PAVEMENT MARKING - LINE 24'

RECOMMENDED FOR APPROVAL	<i>Eric M. Jant</i>
DESIGNED: DWN	DRAWN: DWN
CHECKED: JAK	CHECKED: RSH

ILLINOIS DEPARTMENT OF TRANSPORTATION	
PLAN & PROFILE SHEET STA. 12+30.33 TO 17+50.00 "T"	

HORIZONTAL SCALE	BRIDGE FILE
1" = 20'	
VERTICAL SCALE	SECTION NO.
1" = 2'	10-00030-00-SW
SURVEY BOOK	SHEETS
	9 of 33
CONTRACT	PROJECT
95676	2007-213