

STATE OF ILLINOIS  
DEPARTMENT OF TRANSPORTATION

PLANS FOR PROPOSED  
HIGHWAY BRIDGE PROGRAM

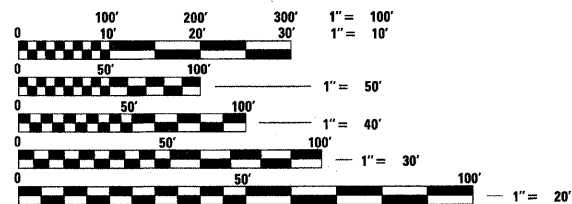
- INDEX OF SHEETS**
- COVER SHEET
  - SUMMARY OF QUANTITIES, GENERAL NOTES, AND TYPICAL SECTIONS
  - PLAN AND PROFILE OF ROADWAY
  - GENERAL PLAN AND ELEVATION
  - 5.-8. PRECAST PRESTRESSED CONCRETE DECK BEAM DETAILS
  - STEEL RAILING, TYPE S1 DETAILS
  - ABUTMENT DETAILS
  - PIER DETAILS
  - HP PILE DETAILS
  - APPROACH RAIL LAYOUT
  - 14.-15. CROSS SECTIONS OF ROADWAY

- HIGHWAY STANDARDS**
- 000001-06 STANDARD SYMBOLS, ABBREVIATIONS AND PATTERNS
  - 515001-03 NAME PLATE FOR BRIDGES
  - 630001-10 STEEL PLATE BEAM GUARDRAIL
  - 635006-03 REFLECTOR AND TERMINAL MARKER PLACEMENT
  - 701901-02 TRAFFIC CONTROL DEVICES
  - B.L.R. 21-9 TYPICAL APPLICATION OF TRAFFIC CONTROL DEVICES FOR CONSTRUCTION ON RURAL LOCAL HIGHWAYS

SOIL BORINGS (SEE SPECIFICATIONS)

DESIGN CLASSIFICATION: RURAL LOCAL ROAD

ADT<sub>2012</sub> : 75  
ADT<sub>2032</sub> : 125  
DESIGN SPEED - 30 MPH



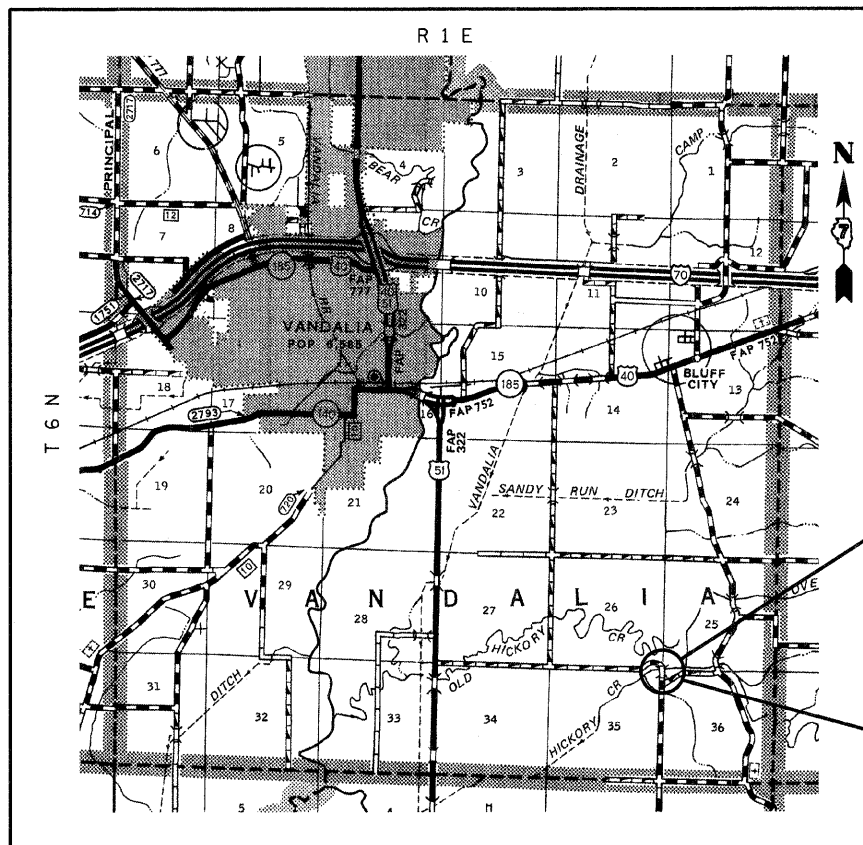
FULL SIZE PLANS HAVE BEEN PREPARED USING STANDARD ENGINEERING SCALES, REDUCED SIZED PLANS WILL NOT CONFORM TO STANDARD SCALES, IN MAKING MEASUREMENTS ON REDUCED PLANS, THE ABOVE SCALES MAY BE USED.

J.U.L.I.E.  
JOINT UTILITY LOCATING INFORMATION FOR EXCAVATORS  
1-800-892-0123 Website: <http://www.illinois1call.com>



*Gary L. Hahn* 04.06.12  
GARY L. HAHN  
CENTRALIA, ILLINOIS  
ILLINOIS LICENSED PROFESSIONAL  
ENGINEER NO. 62-42606  
EXPIRES NOV. 30, 2013

TR 429  
HICKORY CREEK  
SECTION 10-18121-00-BR  
PROJECT NO. BROS-051(090)  
VANDALIA ROAD DISTRICT  
FAYETTE COUNTY  
JOB NO. C-97-056-12

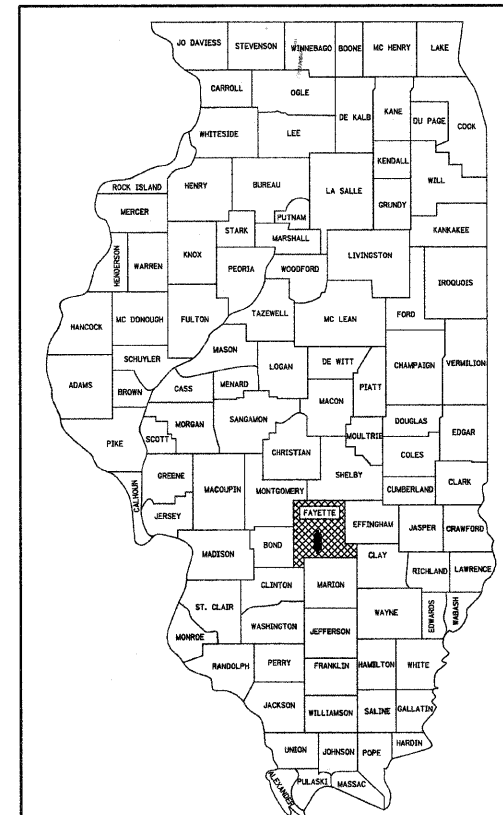


SECTION BEGINS  
STA. 8+97.08

SECTION 10-18121-00-BR INCLUDES THE CONSTRUCTION OF A THREE SPAN PRECAST PRESTRESSED CONCRETE DECK BEAM BRIDGE CARRYING TR 429 OVER HICKORY CREEK, 122'-2" BK. TO BK. ABUTMENTS X 24' WIDE. NO SKEW. EXISTING STRUCTURE NO. 026-3280 PROPOSED STRUCTURE NO. 026-3455

SECTION ENDS  
STA. 11+19.24

LOCATION: NEAR THE NE CORNER OF SECTION 35, T 6 N, R 1 E, 3rd P.M.  
NET LENGTH OF PROJECT: 222.16 FT = 0.042 MI



LOCATION OF SECTION INDICATED THUS: [shaded box symbol]

STATE OF ILLINOIS  
DEPARTMENT OF TRANSPORTATION

APPROVED: 4-9, 2012  
*[Signature]*  
FAYETTE COUNTY, COUNTY ENGINEER

PASSED: 4-11, 2012  
*[Signature]*  
DISTRICT SEVEN ENGINEER OF LOCAL ROADS & STREETS

RELEASING FOR BID  
BASED ON LIMITED  
REVIEW: 4-11, 2012  
*[Signature]*  
DEPUTY DIRECTOR OF HIGHWAYS, REGION FOUR ENGINEER

PRINTED BY THE AUTHORITY  
OF THE STATE OF ILLINOIS

CONTRACT NO. 95677

ROUTE	SECTION	COUNTY	TOTAL SHEETS	SHEET NO.
TR 429	10-18121-00-BR	FAYETTE	15	1
CONTRACT NO. 95677				
RAAT JOB NO. 50811 [ILLINOIS] FED. AID PROJECT				