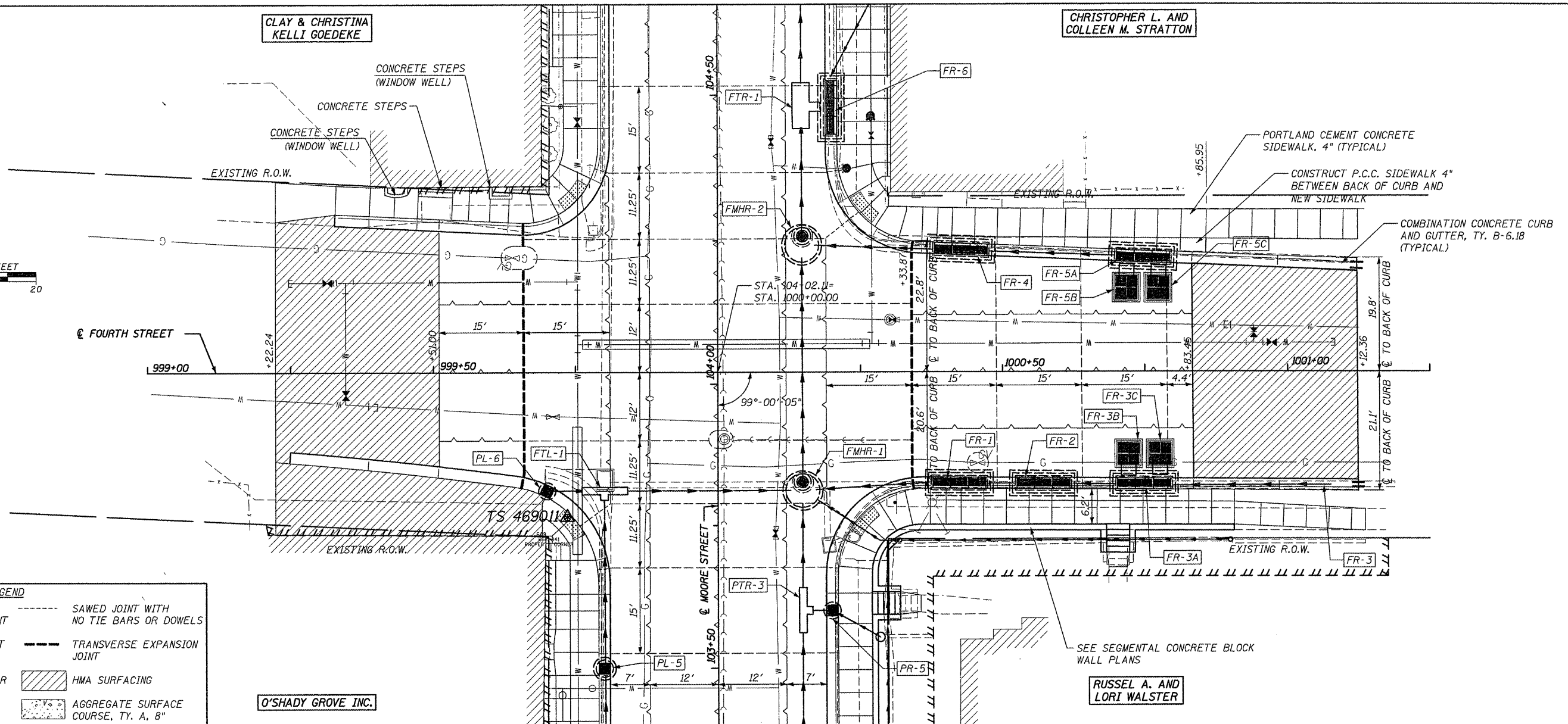
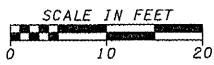


DATE	
BY	
DESIGNED	
CHECKED	
PLOTTED	
GRAPHICS CHECKED	
ALIGNMENT CHECKED	
ROAD FILE NAME	
NO.	

DATE	
BY	
DESIGNED	
CHECKED	
PLOTTED	
GRAPHICS CHECKED	
ALIGNMENT CHECKED	
ROAD FILE NAME	
NO.	

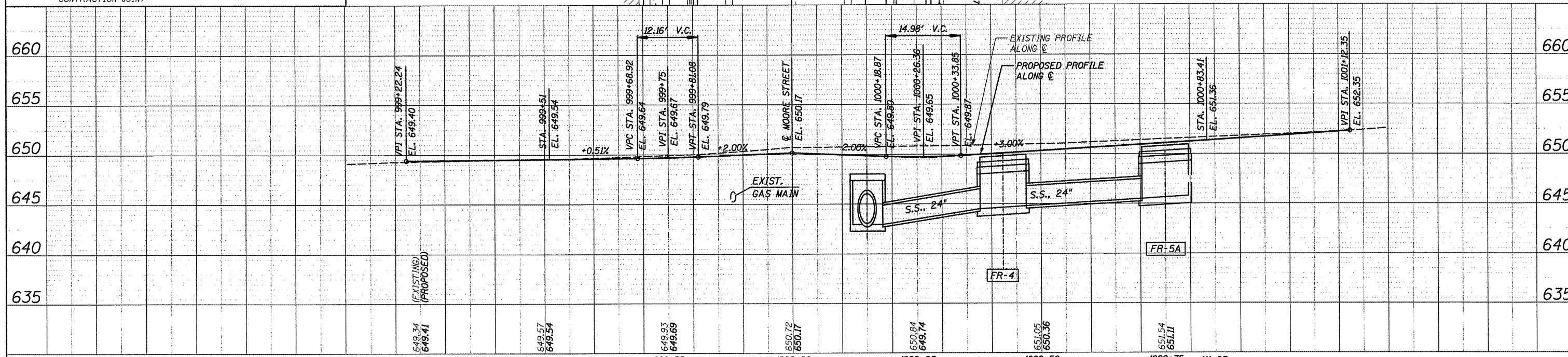


**LEGEND**

TT TT TT	TEMPORARY CONSTRUCTION EASEMENT	---	SAWED JOINT WITH NO TIE BARS OR DOWELS
	SIDEWALK OR PAVEMENT REMOVAL	---	TRANSVERSE EXPANSION JOINT
	LONGITUDINAL SAWED OR CONSTR. JOINT		HMA SURFACING
---	TRANSVERSE CONTRACTION JOINT		AGGREGATE SURFACE COURSE, TY. A, 8"

O'SHADY GROVE INC.

RUSSEL A. AND LORI WALSTER



FILE NAME = 6185-pp5.dgn	USER NAME = juserdescr	DESIGNED - HMG: CRW & EDW	REVISED -	<b>STATE OF ILLINOIS DEPARTMENT OF TRANSPORTATION</b>	<b>PLAN &amp; PROFILE: FOURTH STREET</b>	F.A. RTE. 9315	SECTION 06-00032-03-PV	COUNTY MONROE	TOTAL SHEETS 93	SHEET NO. 20
H:\6185\Water\locMoore5-Phase1\loc22-ROADWAY\6185-pp5.dgn	PLAT SCALE = 1/8" = 1'-0"	DRAWN - HMG: CRW, EDW, & KOJ	REVISED -			SCALE: SHEET NO. OF SHEETS STA. TO STA.	FED. ROAD DIST. NO. ILLINOIS FED. AID PROJECT	<b>CONTRACT NO. 97488</b>		
PLOT DATE = 3/28/2012		CHECKED - HMG: CRW	REVISED -							

HMG ENGINEERS, INC., 1075 LAKE ROAD, PO BOX 70, CARLYLE, IL 62231 PHONE (618) 594-3711 WWW.HMGENGINEERS.COM