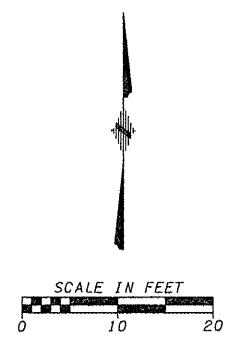


DATE	
BY	
CHECKED	
PLOTTED	
ALIGNMENT	
PROPOSED	
NOTE BOOK	
NO.	
FILE NAME	

DATE	
BY	
CHECKED	
PLOTTED	
GRADES	
NOTED	
STRUCTURE	
NOTATIONS	
CREATED	

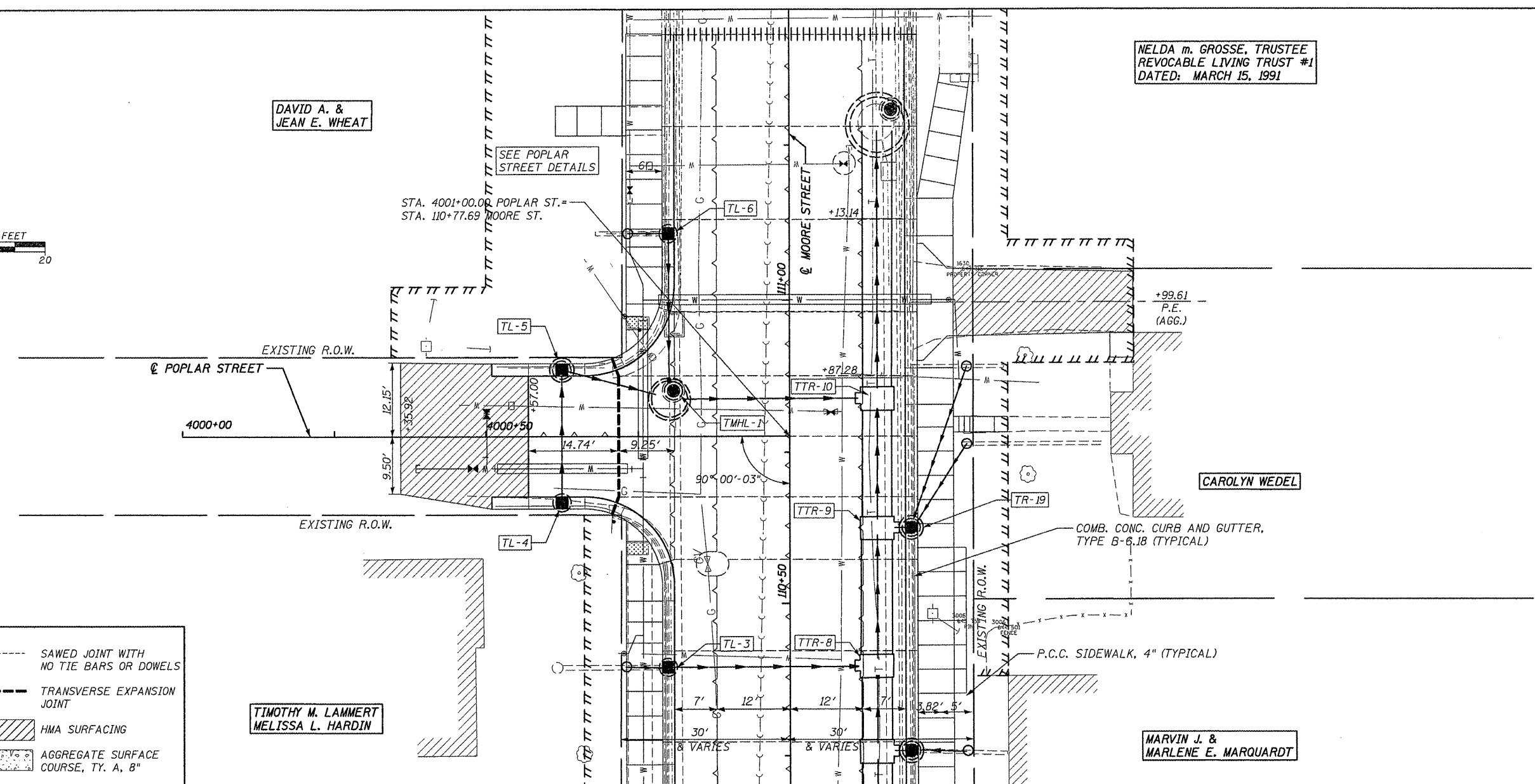


NELDA m. GROSSE, TRUSTEE
REVOCABLE LIVING TRUST #1
DATED: MARCH 15, 1991

DAVID A. &
JEAN E. WHEAT

SEE POPLAR
STREET DETAILS

STA. 4001+00.00 POPLAR ST. =
STA. 110+77.69 MOORE ST.

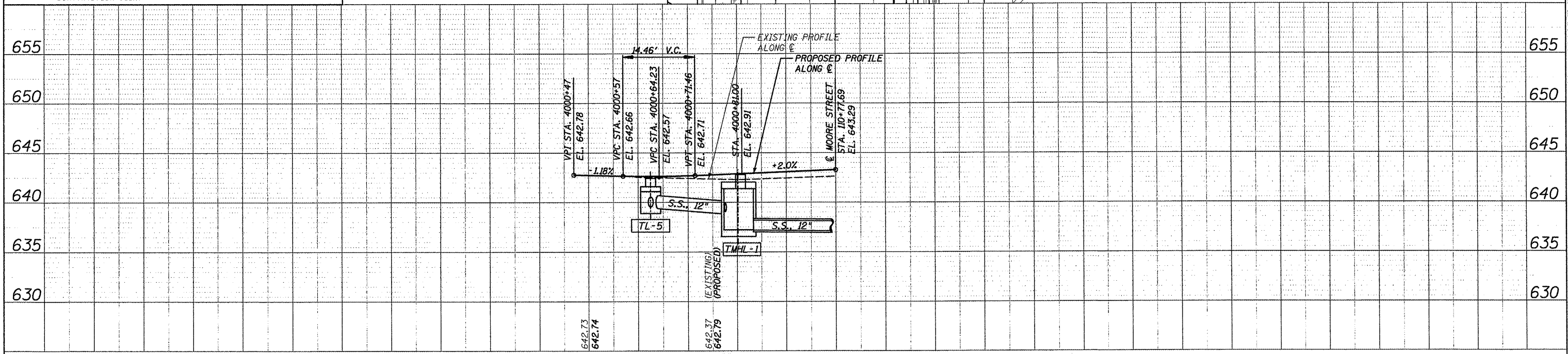


LEGEND

TT TT TT	TEMPORARY CONSTRUCTION EASEMENT	---	SAWED JOINT WITH NO TIE BARS OR DOWELS
XXXXXX	SIDEWALK OR PAVEMENT REMOVAL	---	TRANSVERSE EXPANSION JOINT
~~~~~	LONGITUDINAL SAWED OR CONSTR. JOINT		HMA SURFACING
---	TRANSVERSE CONTRACTION JOINT	.....	AGGREGATE SURFACE COURSE, TY. A, B"

TIMOTHY M. LAMMERT  
MELISSA L. HARDIN

MARVIN J. &  
MARLENE E. MARQUARDT



FILE NAME = 6185-pp7.dgn  
USER NAME = USERDESCR.  
H:\6185\Waterloc\Main\StPhase\VICADD-ROAD\6185-pp7.dgn

DESIGNED - HMG: CRW & EDW  
DRAWN - HMG: CRW, EDW, & KOJ  
CHECKED - HMG: CRW  
DATE -

REVISED -  
REVISED -  
REVISED -  
REVISED -

**STATE OF ILLINOIS  
DEPARTMENT OF TRANSPORTATION**

**PLAN & PROFILE: POPLAR STREET**

SCALE: SHEET NO. OF SHEETS STA. TO STA.

F.A. RTE.	SECTION	COUNTY	TOTAL SHEETS	SHEET NO.
9315	06-00032-03-PV	MONROE	93	22
FED. ROAD DIST. NO.			ILLINOIS FED. AID PROJECT	
CONTRACT NO. 97488				

HMG ENGINEERS, INC., 1075 LAKE ROAD, PO BOX 70, CARLYLE, IL 62231 PHONE (618) 594-3711 WWW.HMGENGINEERS.COM