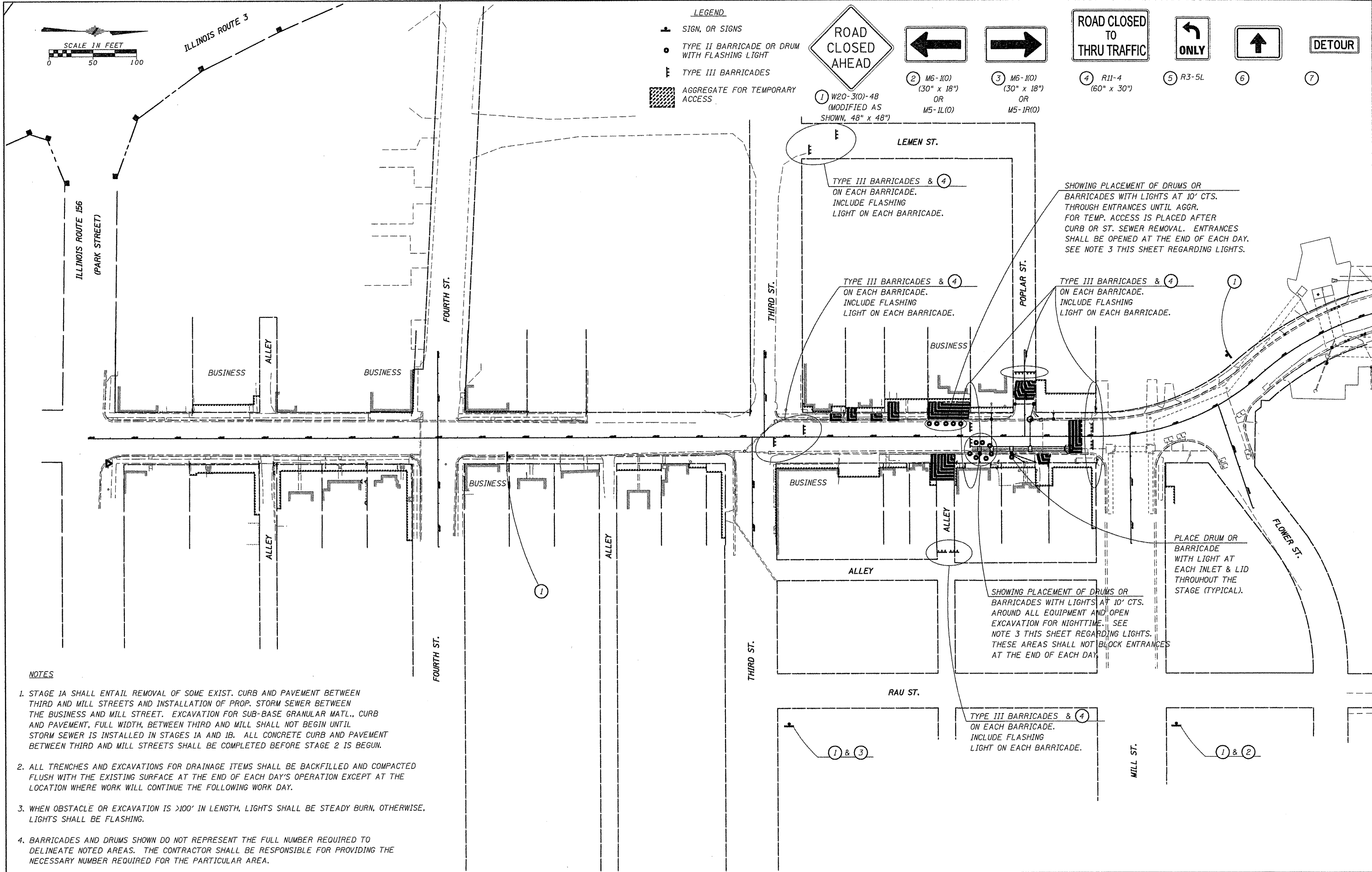
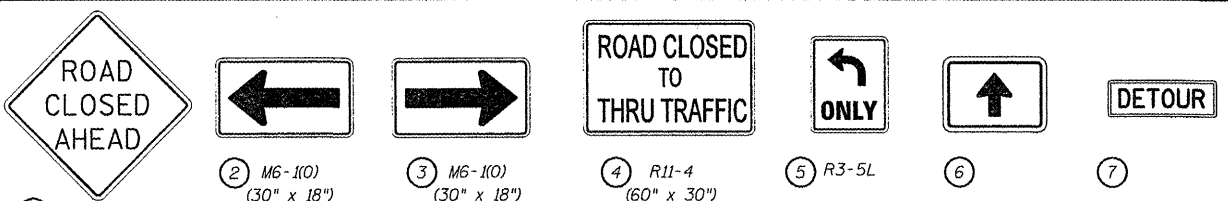


- LEGEND**
- SIGN, OR SIGNS
  - TYPE II BARRICADE OR DRUM WITH FLASHING LIGHT
  - ⊥ TYPE III BARRICADES
  - ▨ AGGREGATE FOR TEMPORARY ACCESS



- NOTES**
1. STAGE 1A SHALL ENTAIL REMOVAL OF SOME EXIST. CURB AND PAVEMENT BETWEEN THIRD AND MILL STREETS AND INSTALLATION OF PROP. STORM SEWER BETWEEN THE BUSINESS AND MILL STREET. EXCAVATION FOR SUB-BASE GRANULAR MATL., CURB AND PAVEMENT, FULL WIDTH, BETWEEN THIRD AND MILL SHALL NOT BEGIN UNTIL STORM SEWER IS INSTALLED IN STAGES 1A AND 1B. ALL CONCRETE CURB AND PAVEMENT BETWEEN THIRD AND MILL STREETS SHALL BE COMPLETED BEFORE STAGE 2 IS BEGUN.
  2. ALL TRENCHES AND EXCAVATIONS FOR DRAINAGE ITEMS SHALL BE BACKFILLED AND COMPACTED FLUSH WITH THE EXISTING SURFACE AT THE END OF EACH DAY'S OPERATION EXCEPT AT THE LOCATION WHERE WORK WILL CONTINUE THE FOLLOWING WORK DAY.
  3. WHEN OBSTACLE OR EXCAVATION IS >100' IN LENGTH, LIGHTS SHALL BE STEADY BURN, OTHERWISE, LIGHTS SHALL BE FLASHING.
  4. BARRICADES AND DRUMS SHOWN DO NOT REPRESENT THE FULL NUMBER REQUIRED TO DELINEATE NOTED AREAS. THE CONTRACTOR SHALL BE RESPONSIBLE FOR PROVIDING THE NECESSARY NUMBER REQUIRED FOR THE PARTICULAR AREA.

FILE NAME = 6185-stage1a.dgn	USER NAME = JUSERDSSCR	DESIGNED - HMG: CRW & EDW	REVISED -
\\N:\B5\water\loc\moore\stage1a\CAD\ROAD	\\N:\B5\water\loc\moore\stage1a.dgn	DRAWN - HMG: CRW, EDW, & KOJ	REVISED -
		CHECKED - HMG: CRW	REVISED -
		DATE -	REVISED -

**STATE OF ILLINOIS  
DEPARTMENT OF TRANSPORTATION**

**CONSTRUCTION STAGING:  
STAGE 1A**

SCALE: SHEET NO. OF SHEETS STA. TO STA.

F.A. RTE.	SECTION	COUNTY	TOTAL SHEETS	SHEET NO.
9315	06-00032-03-PV	MONROE	93	23
FED. ROAD DIST. NO.			ILLINOIS FED. AID PROJECT	
CONTRACT NO. 97488				

HMG ENGINEERS, INC., 1075 LAKE ROAD, PO BOX 70, CARLYLE, IL 62231 PHONE (618) 594-3711 WWW.HMGENGINEERS.COM