

LEGEND

- ▲ SIGN, OR SIGNS
- TYPE II BARRICADE OR DRUM WITH FLASHING LIGHT
- ⊞ TYPE III BARRICADES
- ▨ AGGREGATE FOR TEMPORARY ACCESS

1 W20-3(0)-48 (MODIFIED AS SHOWN, 48" x 48")

2 M6-1(0) (30" x 18") OR M5-1L(0)

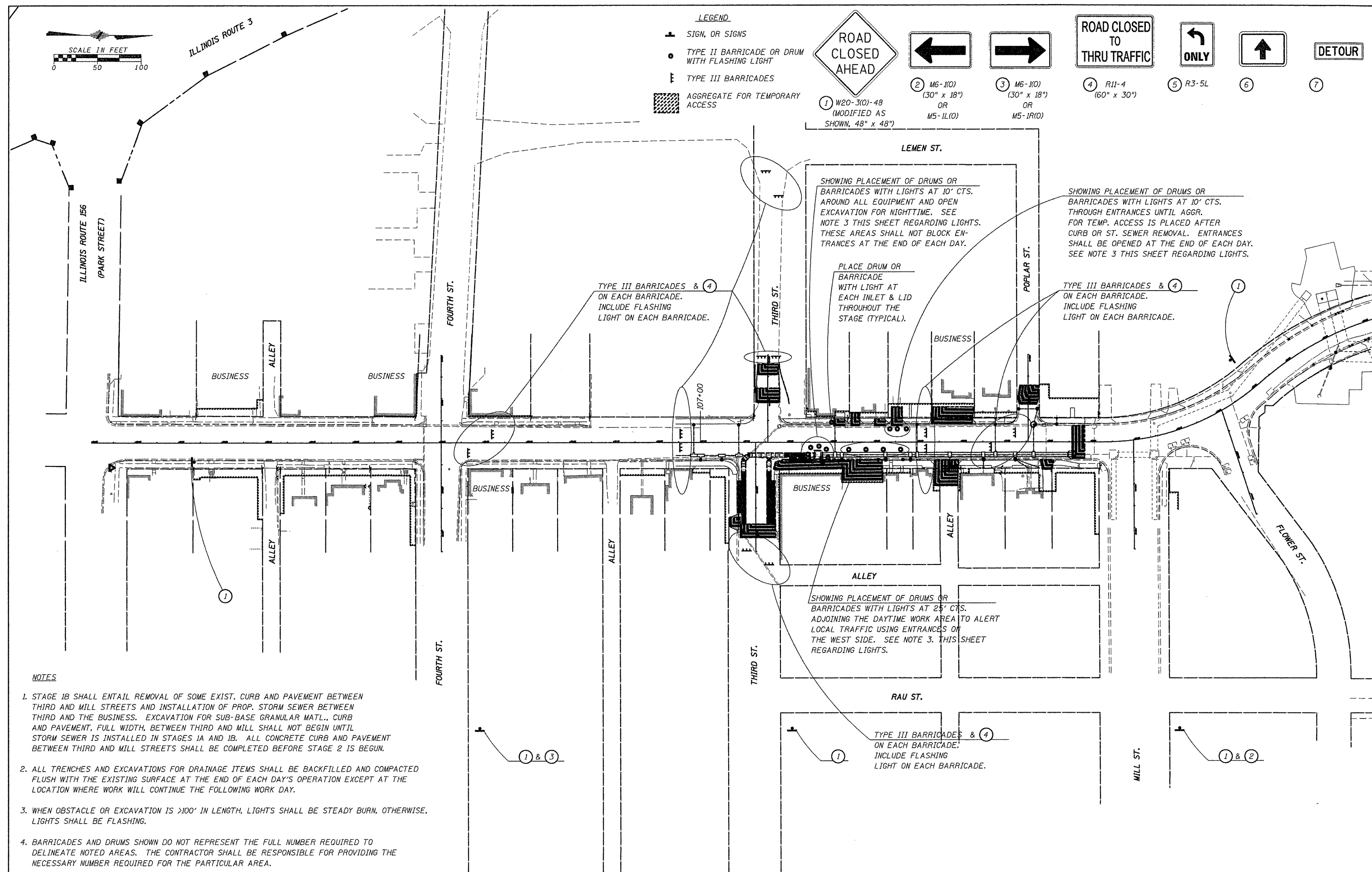
3 M6-1(0) (30" x 18") OR M5-1R(0)

4 R11-4 (60" x 30")

5 R3-5L

6

7



- NOTES**
1. STAGE 1B SHALL ENTAIL REMOVAL OF SOME EXIST. CURB AND PAVEMENT BETWEEN THIRD AND MILL STREETS AND INSTALLATION OF PROP. STORM SEWER BETWEEN THIRD AND THE BUSINESS. EXCAVATION FOR SUB-BASE GRANULAR MATL., CURB AND PAVEMENT, FULL WIDTH, BETWEEN THIRD AND MILL SHALL NOT BEGIN UNTIL STORM SEWER IS INSTALLED IN STAGES 1A AND 1B. ALL CONCRETE CURB AND PAVEMENT BETWEEN THIRD AND MILL STREETS SHALL BE COMPLETED BEFORE STAGE 2 IS BEGUN.
 2. ALL TRENCHES AND EXCAVATIONS FOR DRAINAGE ITEMS SHALL BE BACKFILLED AND COMPACTED FLUSH WITH THE EXISTING SURFACE AT THE END OF EACH DAY'S OPERATION EXCEPT AT THE LOCATION WHERE WORK WILL CONTINUE THE FOLLOWING WORK DAY.
 3. WHEN OBSTACLE OR EXCAVATION IS >100' IN LENGTH, LIGHTS SHALL BE STEADY BURN, OTHERWISE, LIGHTS SHALL BE FLASHING.
 4. BARRICADES AND DRUMS SHOWN DO NOT REPRESENT THE FULL NUMBER REQUIRED TO DELINEATE NOTED AREAS. THE CONTRACTOR SHALL BE RESPONSIBLE FOR PROVIDING THE NECESSARY NUMBER REQUIRED FOR THE PARTICULAR AREA.

FILE NAME = 6185-stage1b.dgn	USER NAME = .USERDESCR.	DESIGNED - HMG: CRW & EDW	REVISED -	STATE OF ILLINOIS DEPARTMENT OF TRANSPORTATION	CONSTRUCTION STAGING: STAGE 1B	F.A. RTE. 9315	SECTION 06-00032-03-PV	COUNTY MONROE	TOTAL SHEETS 93	SHEET NO. 24	
M:\6185\water\co\moore\stage1b.dgn	PLT SCALE = 8/22/22 1/4 IN.	DRAWN - HMG: CRW, EDW. & KOJ	REVISED -			CONTRACT NO. 97488					
PLT DATE = 3/20/22	DATE -	CHECKED - HMG: CRW	REVISED -			FED. ROAD DIST. NO. ILLINOIS FED. AID PROJECT					
						SCALE: SHEET NO. OF SHEETS STA. TO STA.					

HMG ENGINEERS, INC., 1075 LAKE ROAD, PO BOX 70, CARLYLE, IL 62231 PHONE (618) 594-3711 WWW.HMGENGINEERS.COM