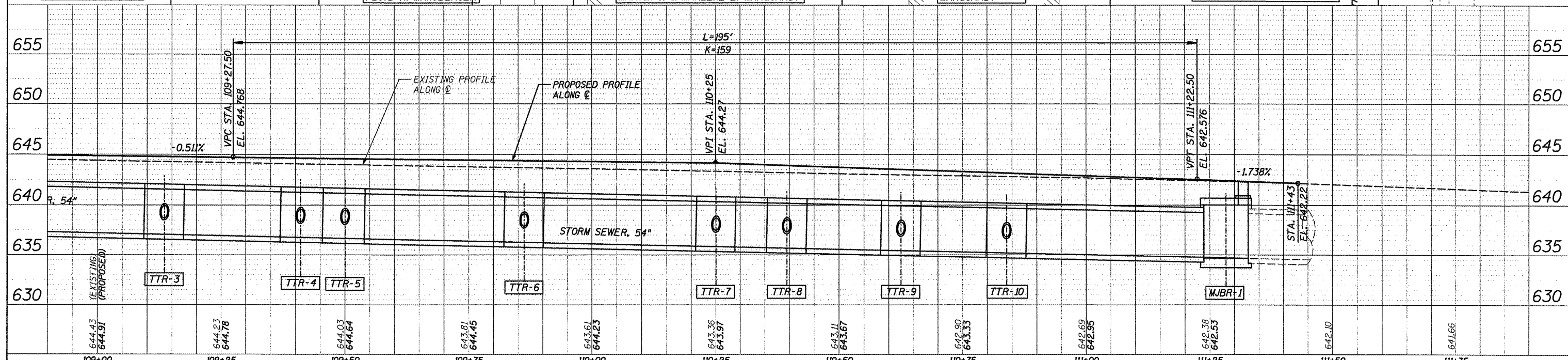


DATE	
BY	
PLAN	
REVISIONS	
NO. 1	
NO. 2	
NO. 3	
NO. 4	
NO. 5	
NO. 6	
NO. 7	
NO. 8	
NO. 9	
NO. 10	

DATE	
BY	
PROFILE	
REVISIONS	
NO. 1	
NO. 2	
NO. 3	
NO. 4	
NO. 5	
NO. 6	
NO. 7	
NO. 8	
NO. 9	
NO. 10	



FILE NAME = 6185-ss4.dgn	USER NAME = JUSERDESCR.	DESIGNED - HMG: CRW & EDW	REVISED -
H:\6185\Water\108MooreSt\Phase2\1\CADD-ROADWAY\6185-ss4.dgn		DRAWN - HMG: CRW, EDW, & KOJ	REVISED -
PLOT SCALE = 1/8" = 1'		CHECKED - HMG: CRW	REVISED -
PLOT DATE = 3/28/2012		DATE	REVISED -

STATE OF ILLINOIS
DEPARTMENT OF TRANSPORTATION

STA. 108+90 - STA. 111+90, F.A.U. 9315 (MOORE ST.)
REMOVALS & STORM SEWER

SCALE: SHEET NO. OF SHEETS STA. TO STA.

F.A. RTE.	SECTION	COUNTY	TOTAL SHEETS	SHEET NO.
9315	06-00032-03-PV	MONROE	93	34
FED. ROAD DIST. NO. ILLINOIS FED. AID PROJECT			CONTRACT NO. 97488	

HMG ENGINEERS, INC., 1075 LAKE ROAD, PO BOX 70, CARLYLE, IL 62231 PHONE (618) 594-3711 WWW.HMGENGINEERS.COM