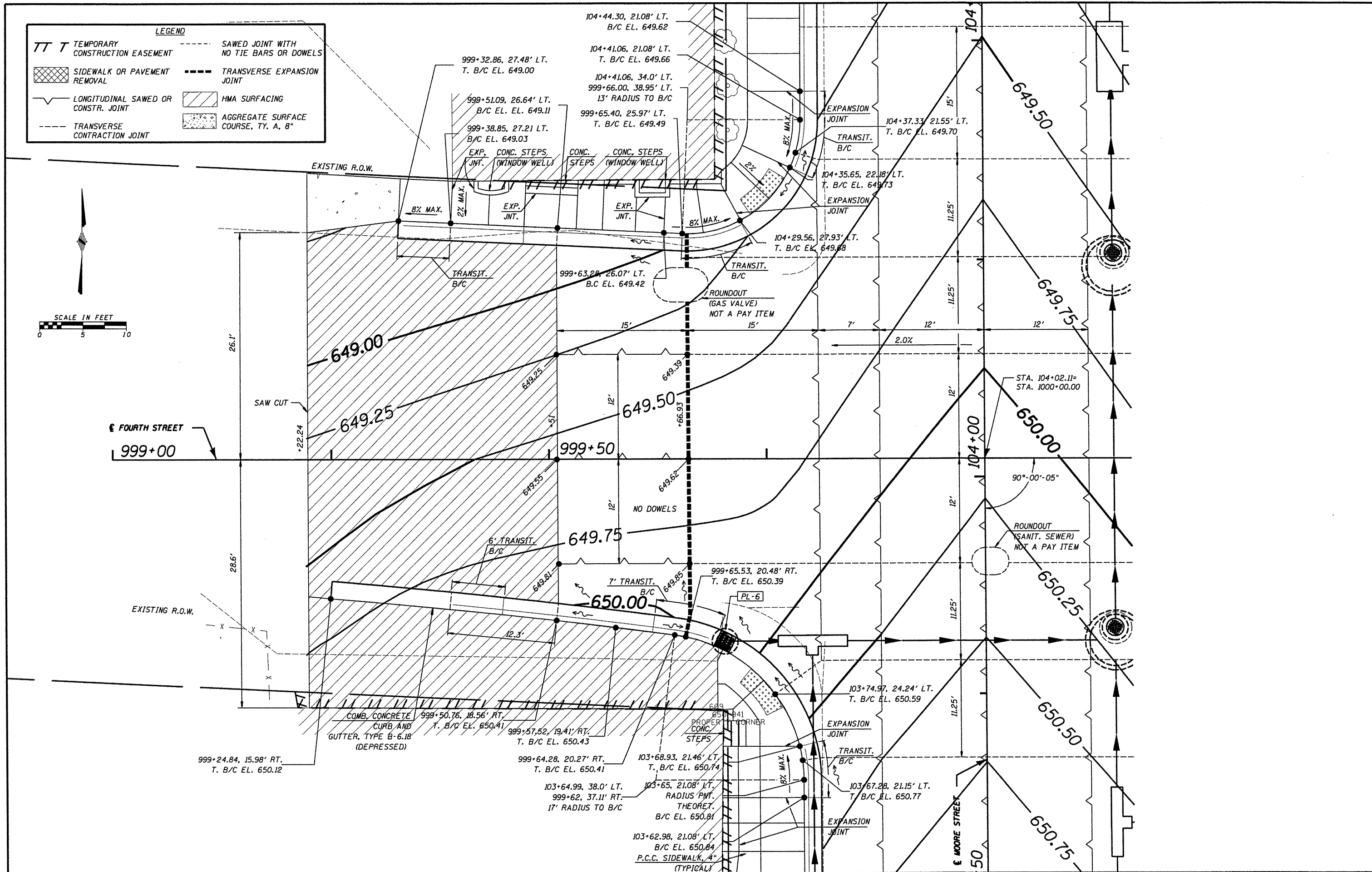
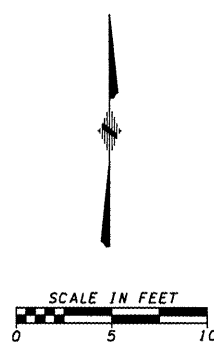


**LEGEND**

TT T	TEMPORARY CONSTRUCTION EASEMENT	---	SAWED JOINT WITH NO TIE BARS OR DOWELS
[Hatched Box]	SIDWALK OR PAVEMENT REMOVAL	---	TRANSVERSE EXPANSION JOINT
[Wavy Line]	LONGITUDINAL SAWED OR CONSTR. JOINT	[Diagonal Lines]	HMA SURFACING
---	TRANSVERSE CONTRACTION JOINT	[Dotted Box]	AGGREGATE SURFACE COURSE, TY. A, 8"



FILE NAME = 6185-Intersectd1-Fourthwest.dgn	USER NAME = USER*	DESIGNED - HMG: CRW & EDW	REVISED -	<b>STATE OF ILLINOIS</b> <b>DEPARTMENT OF TRANSPORTATION</b>	<b>INTERSECTION DETAIL</b> <b>FOURTH STREET (WEST OF MOORE)</b>	F.A. RTE. 9375	SECTION 06-00032-03-PV	COUNTY MONROE	TOTAL SHEETS 93	SHEET NO. 45	
#FILEL*	PLOT SCALE = *SCALE*	DRAWN - HMG: CRW, EDW, & KOJ	REVISED -			SCALE:	SHEET NO. OF SHEETS	STA. TO STA.	CONTRACT NO. 97488		
	PLOT DATE = *DATE*	CHECKED - HMG: CRW	REVISED -			FED. ROAD DIST. NO. ILLINOIS FED. AID PROJECT					
		DATE -	REVISED -								

HMG ENGINEERS, INC., 1075 LAKE ROAD, PO BOX 70, CARLYLE, IL 62231 PHONE (618) 594-3711 WWW.HMGENGINEERS.COM