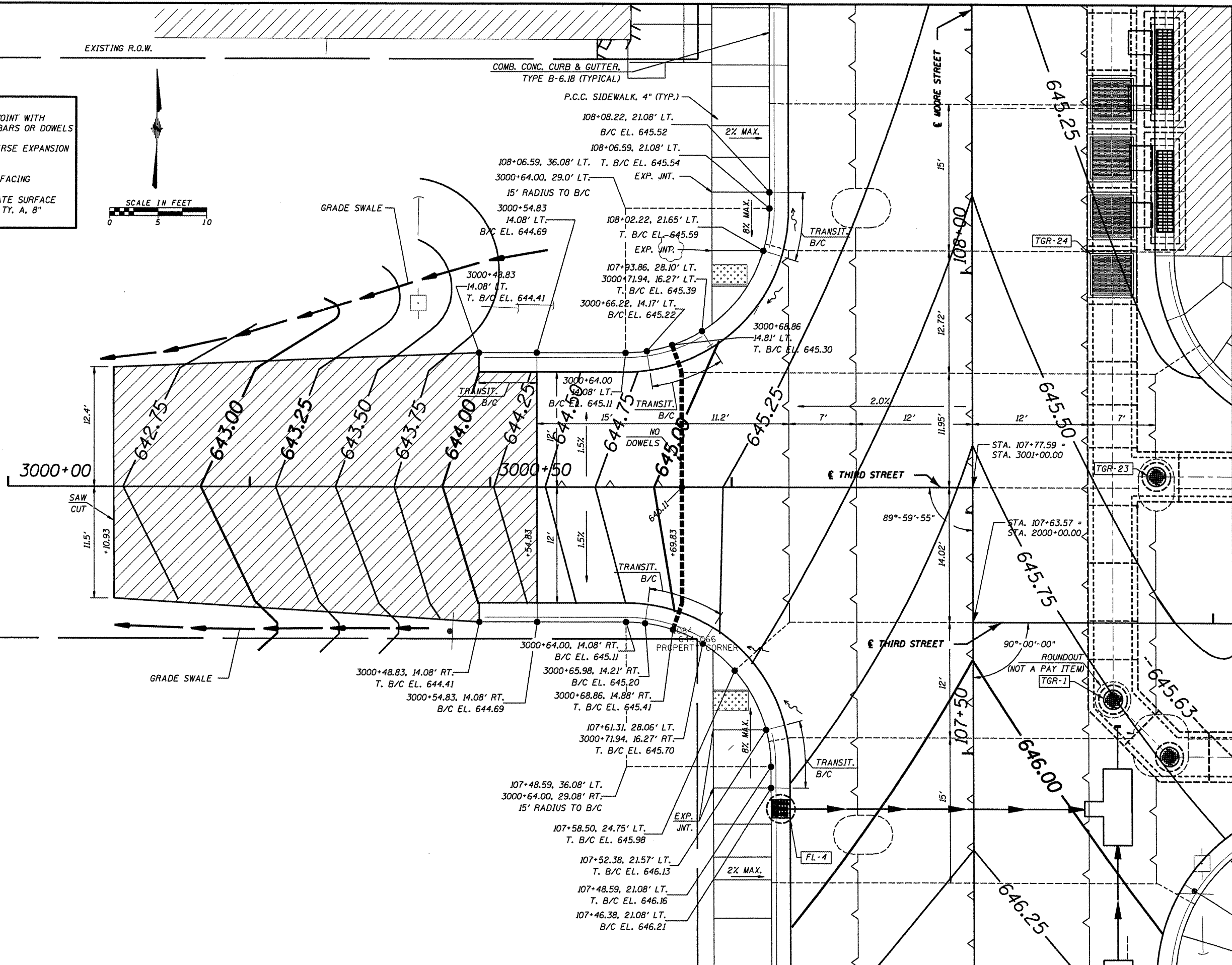
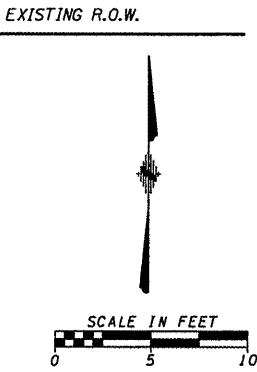


LEGEND			
TT T	TEMPORARY CONSTRUCTION EASEMENT	---	SAWED JOINT WITH NO TIE BARS OR DOWELS
[Cross-hatched]	SIDEWALK OR PAVEMENT REMOVAL	---	TRANSVERSE EXPANSION JOINT
[Wavy line]	LONGITUDINAL SAWED OR CONSTR. JOINT	[Diagonal lines]	HMA SURFACING
---	TRANSVERSE CONTRACTION JOINT	[Dotted]	AGGREGATE SURFACE COURSE, TY. A, 8"



FILE NAME = 6185-Intersect1-ThirdWest.dgn	USER NAME = *USER*	DESIGNED - HMG: CRW & EDW	REVISED -
*FILE#		DRAWN - HMG: CRW, EDW, & KOJ	REVISED -
PLOT SCALE = *SCALE*		CHECKED - HMG: CRW	REVISED -
PLOT DATE = *DATE*		DATE -	REVISED -

**STATE OF ILLINOIS
DEPARTMENT OF TRANSPORTATION**

**INTERSECTION DETAIL
THIRD STREET (WEST OF MOORE)**

SCALE: SHEET NO. OF SHEETS STA. TO STA.

F.A. RTE. 9315	SECTION 06-00032-03-PV	COUNTY MONROE	TOTAL SHEETS 93	SHEET NO. 48
FED. ROAD DIST. NO.		ILLINOIS FED. AID PROJECT		
CONTRACT NO. 97488				

HMG ENGINEERS, INC., 1075 LAKE ROAD, PO BOX 70, CARLYLE, IL 62231 PHONE (618) 594-3711 WWW.HMGENGINEERS.COM