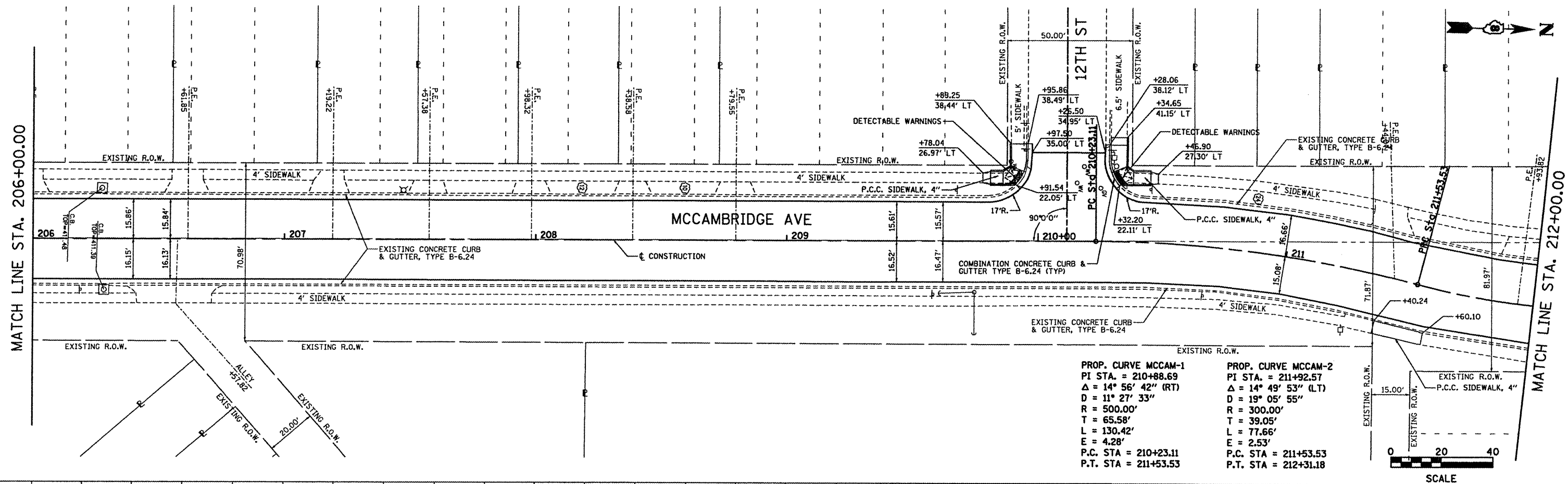


PLAN	DATE
SUBMITTED	BY
PLOTTED	DATE
ALIGNMENT CHECKED	BY
STRUCTURE NOTATIONS CHECKED	DATE
NO.	

PROFILE	DATE
SUBMITTED	BY
PLOTTED	DATE
ALIGNMENT CHECKED	BY
STRUCTURE NOTATIONS CHECKED	DATE
NO.	

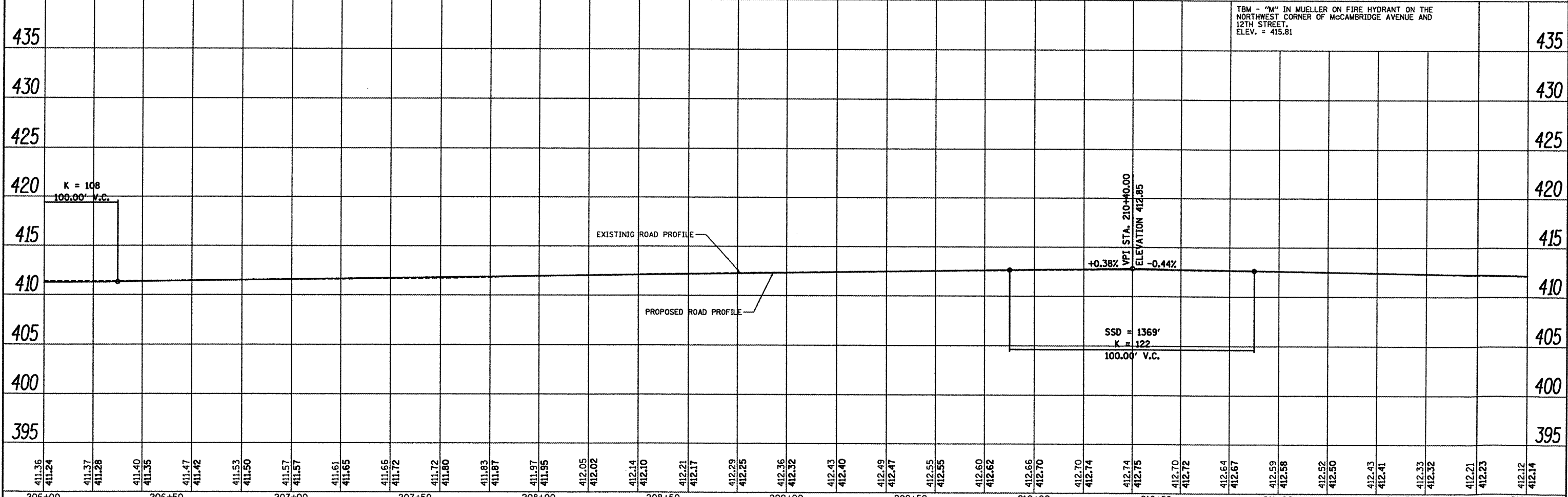
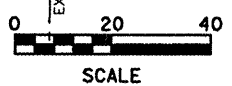
MATCH LINE STA. 206+00.00

MATCH LINE STA. 212+00.00



PROP. CURVE MCCAM-1
 PI STA. = 210+88.69
 $\Delta = 14^\circ 56' 42''$ (RT)
 $D = 11^\circ 27' 33''$
 $R = 500.00'$
 $T = 65.58'$
 $L = 130.42'$
 $E = 4.28'$
 P.C. STA = 210+23.11
 P.T. STA = 211+53.53

PROP. CURVE MCCAM-2
 PI STA. = 211+92.57
 $\Delta = 14^\circ 49' 53''$ (LT)
 $D = 19^\circ 05' 55''$
 $R = 300.00'$
 $T = 39.05'$
 $L = 77.66'$
 $E = 2.53'$
 P.C. STA = 211+53.53
 P.T. STA = 212+31.18



TBM - "M" IN MUELLER ON FIRE HYDRANT ON THE NORTHWEST CORNER OF MCCAMBRIDGE AVENUE AND 12TH STREET. ELEV. = 415.81

FILE NAME = plan 88.dgn	USER NAME = Jeremy	DESIGNED - SAS	REVISED -	CITY OF MADISON 13TH STREET, ELIZABETH AVE, AND MCCAMBRIDGE AVE REHABILITATION	PLAN & PROFILE	F.A.U. RTE. 9107	SECTION 09-00057-00-PV	COUNTY MADISON	TOTAL SHEETS 58	SHEET NO. 23	
	PLOT SCALE = #SCALE#	DRAWN - JJB	REVISED -		SCALE: 1"=20'	SHEET NO. 8 OF 9 SHEETS	STA. 206+00.00 TO STA. 212+00.00		CONTRACT NO. 97489		
	PLOT DATE = 3/29/2012	CHECKED - BFK	REVISED -		ILLINOIS FED. AID PROJECT						
		DATE - 03/13/12	REVISED -								