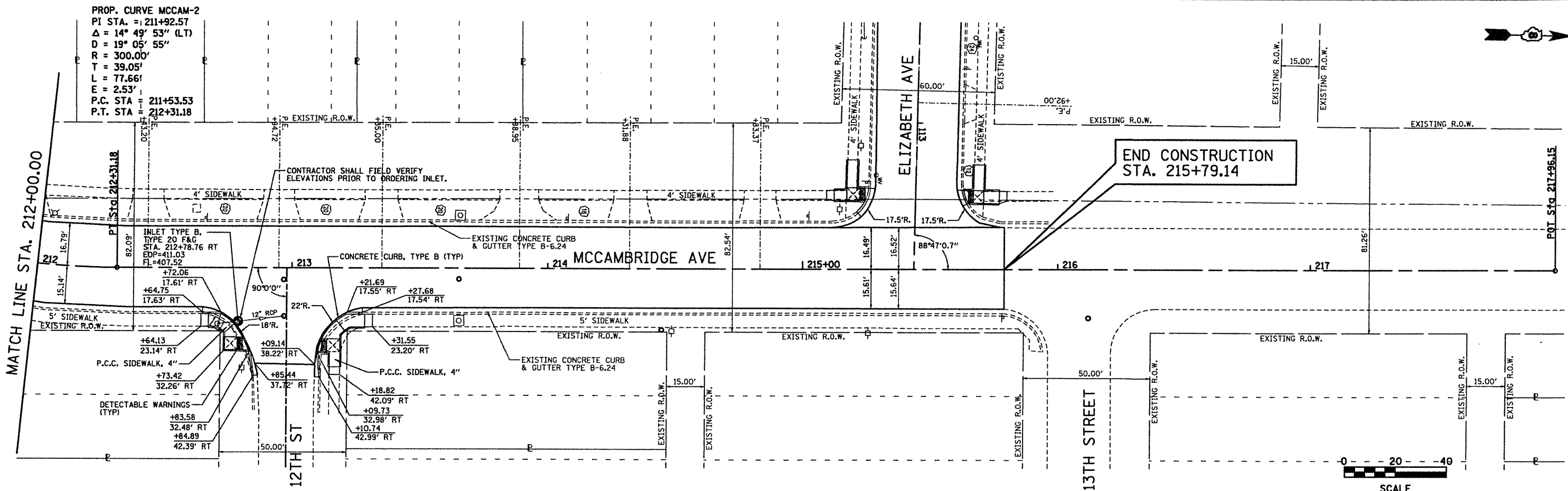


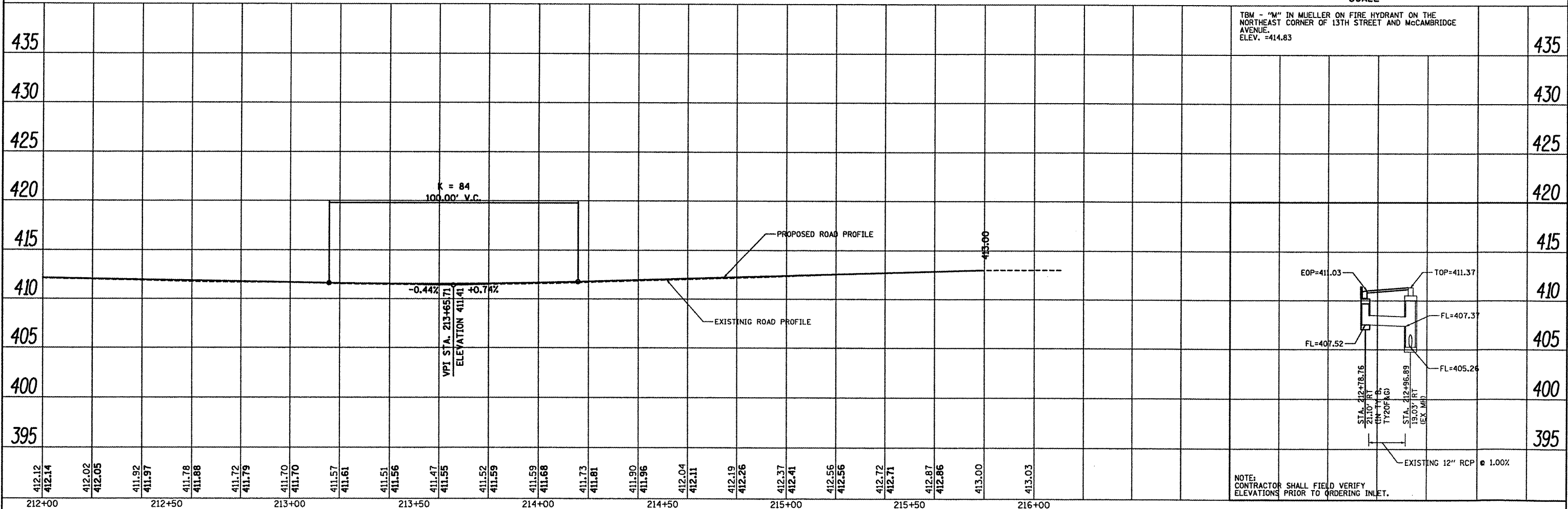


PROP. CURVE MCCAM-2
 PI STA. = 211+92.57
 $\Delta = 14^\circ 49' 53''$ (LT)
 $D = 19^\circ 05' 55''$
 $R = 300.00'$
 $T = 39.05'$
 $L = 77.66'$
 $E = 2.53'$
 P.C. STA 211+53.53
 P.T. STA 212+31.18



DATE	
BY	
REVISIONS	
NO.	
DESCRIPTION	
DATE	
BY	
DATE	
BY	
DATE	

DATE	
BY	
REVISIONS	
NO.	
DESCRIPTION	
DATE	
BY	
DATE	
BY	
DATE	



TBM - "M" IN MUELLER ON FIRE HYDRANT ON THE NORTHEAST CORNER OF 13TH STREET AND MCCAMBRIDGE AVENUE. ELEV. = 414.83

FILE NAME = plan 09.dgn	USER NAME = jeremy	DESIGNED - SAS	REVISED -	CITY OF MADISON 13TH STREET, ELIZABETH AVE, AND MCCAMBRIDGE AVE REHABILITATION	PLAN & PROFILE MCCAMBRIDGE AVENUE	F.A.U. RTE. 9107	SECTION 09-00057-00-PV	COUNTY MADISON	TOTAL SHEETS 58	SHEET NO. 24	
		DRAWN - JJB	REVISED -			SCALE: 1"=20'	SHEET NO. 9 OF 9 SHEETS	STA. 212+00.00 TO STA. 217+00.00	CONTRACT NO. 97489		
		CHECKED - BFK	REVISED -			ILLINOIS FED. AID PROJECT					
		PLOT DATE = 3/29/2012	REVISED -								