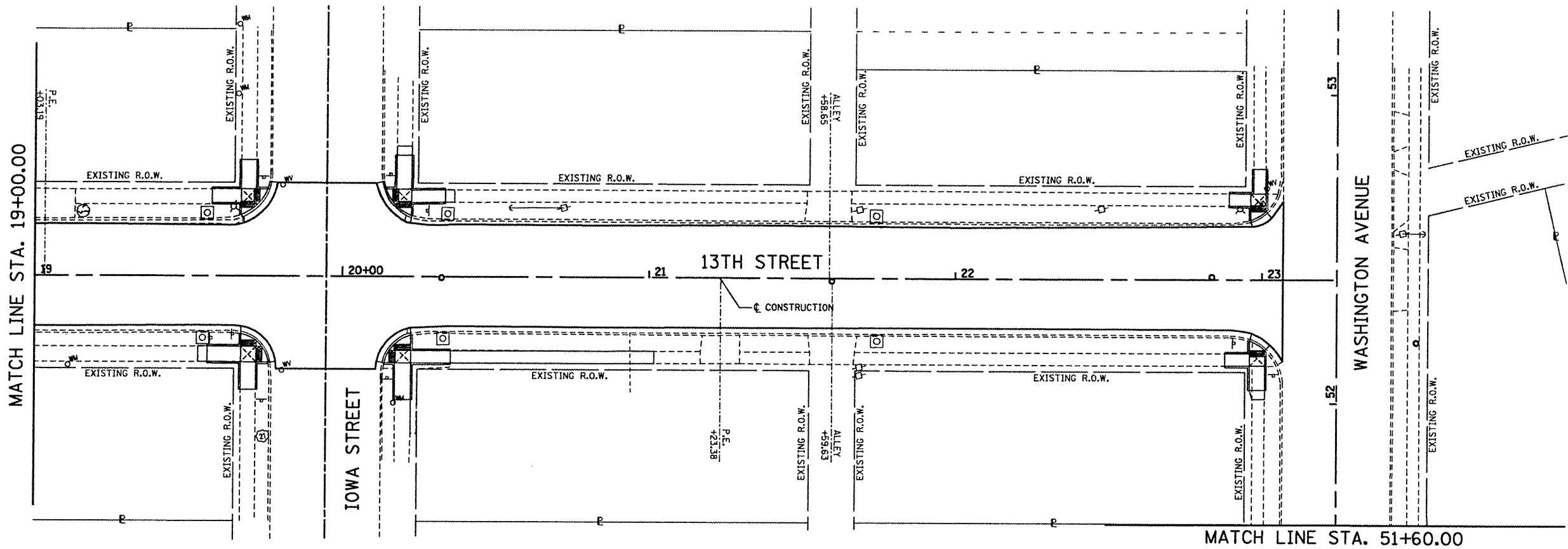
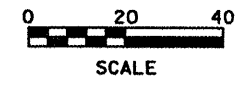


PLAN	DATE
SUBMITTED	
PLOTTED	
NOTE BOOK	
ALIGNMENT CHECKED	
BY	
NO.	
DATE	
FILE NAME	

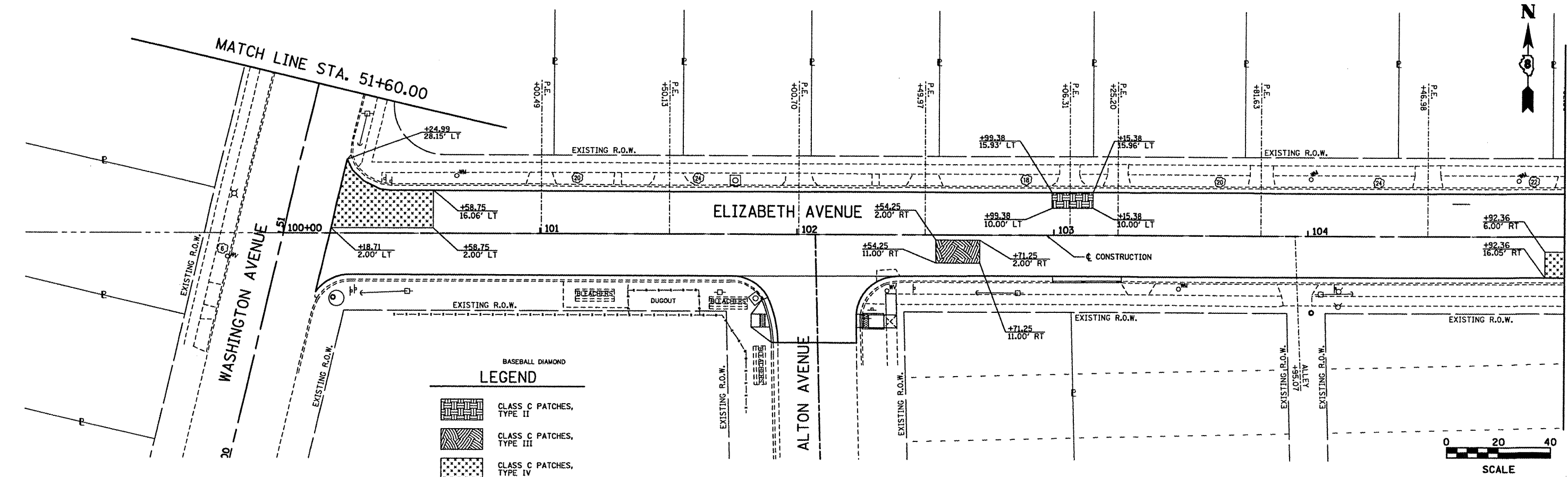


LEGEND

	CLASS C PATCHES, TYPE II
	CLASS C PATCHES, TYPE III
	CLASS C PATCHES, TYPE IV

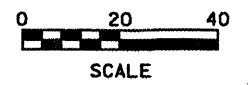


PROFILE	DATE
SURVEYED	
PLOTTED	
NOTE BOOK	
BY	
NO.	
DATE	
FILE NAME	



LEGEND

	CLASS C PATCHES, TYPE II
	CLASS C PATCHES, TYPE III
	CLASS C PATCHES, TYPE IV



FILE NAME = patching 02.dgn

USER NAME = jeremy	DESIGNED - SAS	REVISED -
PLLOT SCALE = #SCALE#	DRAWN - JJB	REVISED -
PLLOT DATE = 3/29/2012	CHECKED - BFK	REVISED -
	DATE - 03/13/12	REVISED -

**CITY OF MADISON
13TH STREET, ELIZABETH AVE,
AND McCAMBRIDGE AVE REHABILITATION**

PAVEMENT PATCHING
SCALE: 1"=20' SHEET NO. 2 OF 5 SHEETS
STA. 19+00.00 TO STA. 23+24.62
STA. 100+00.00 TO STA. 105+00.00

F.A.U. RTE.	SECTION	COUNTY	TOTAL SHEETS	SHEET NO.
9101	09-00047-00-PV	MADISON	58	42
CONTRACT NO. 97489				
ILLINOIS FED. AID PROJECT				