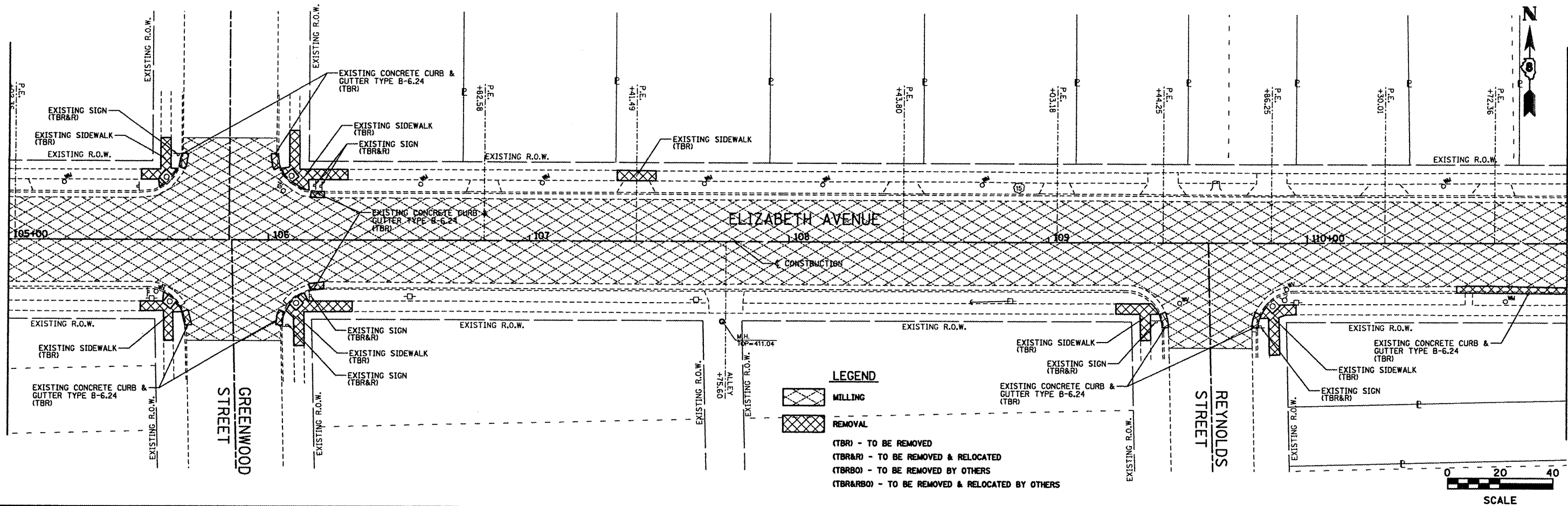


DATE	
BY	
PLAN	
NO.	
REVISIONS	
1	
2	
3	
4	
5	
6	
7	
8	
9	
10	
11	
12	
13	
14	
15	
16	
17	
18	
19	
20	
21	
22	
23	
24	
25	
26	
27	
28	
29	
30	
31	
32	
33	
34	
35	
36	
37	
38	
39	
40	
41	
42	
43	
44	
45	
46	
47	
48	
49	
50	
51	
52	
53	
54	
55	
56	
57	
58	
59	
60	
61	
62	
63	
64	
65	
66	
67	
68	
69	
70	
71	
72	
73	
74	
75	
76	
77	
78	
79	
80	
81	
82	
83	
84	
85	
86	
87	
88	
89	
90	
91	
92	
93	
94	
95	
96	
97	
98	
99	
100	

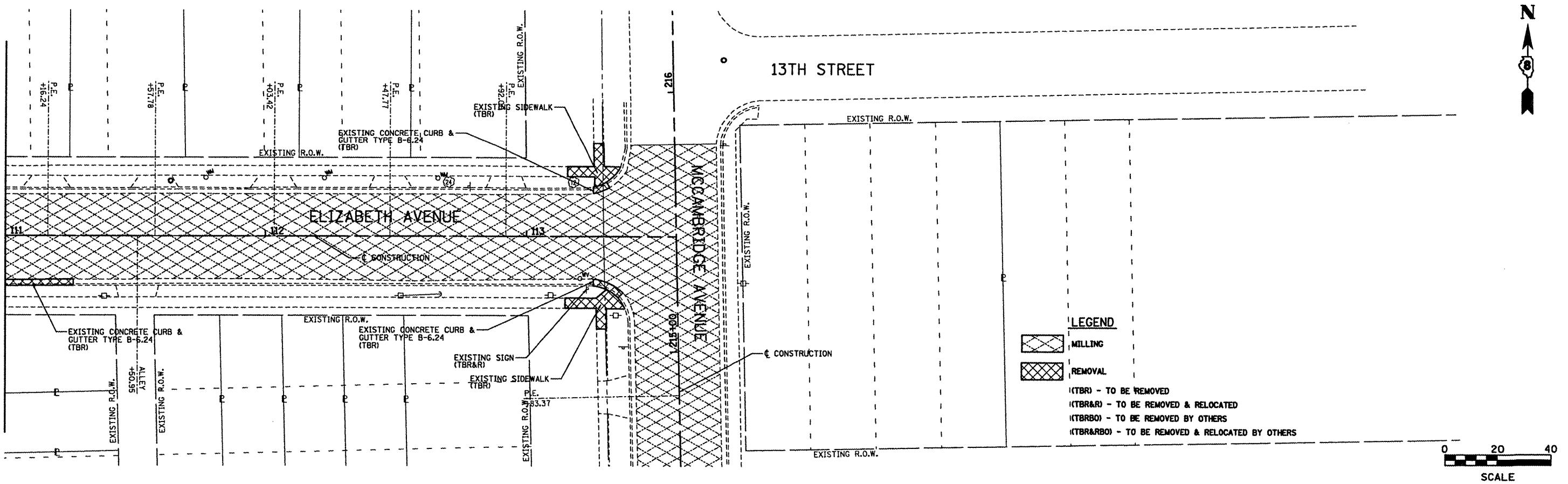
MATCH LINE STA. 105+00.00



MATCH LINE STA. 111+00.00

DATE	
BY	
PROFILE	
NO.	
REVISIONS	
1	
2	
3	
4	
5	
6	
7	
8	
9	
10	
11	
12	
13	
14	
15	
16	
17	
18	
19	
20	
21	
22	
23	
24	
25	
26	
27	
28	
29	
30	
31	
32	
33	
34	
35	
36	
37	
38	
39	
40	
41	
42	
43	
44	
45	
46	
47	
48	
49	
50	
51	
52	
53	
54	
55	
56	
57	
58	
59	
60	
61	
62	
63	
64	
65	
66	
67	
68	
69	
70	
71	
72	
73	
74	
75	
76	
77	
78	
79	
80	
81	
82	
83	
84	
85	
86	
87	
88	
89	
90	
91	
92	
93	
94	
95	
96	
97	
98	
99	
100	

MATCH LINE STA. 111+00.00



MATCH LINE STA. 113+57.74

FILE NAME = rem 83.dgn

USER NAME = jeremy	DESIGNED - SAS	REVISED -
PLOT SCALE = #SCALE#	DRAWN - JJB	REVISED -
PLOT DATE = 3/29/2012	CHECKED - BFK	REVISED -
	DATE - 03/13/12	REVISED -

**CITY OF MADISON
13TH STREET, ELIZABETH AVE,
AND McCAMBRIDGE AVE REHABILITATION**

SCALE: 1"=20'	SHEET NO. 3 OF 5 SHEETS	STA. 105+00.00 TO STA. 113+57.74
---------------	-------------------------	----------------------------------

F.A.U. RTE. 9101	SECTION 09-00057-00-PV	COUNTY MADISON	TOTAL SHEETS 58	SHEET NO. 48
CONTRACT NO. 97489				
ILLINOIS FED. AID PROJECT				