

**GENERAL NOTES:**

THIS SECTION SHALL BE CONSTRUCTED IN ACCORDANCE WITH THE PLANS, SPECIAL PROVISIONS AND "STANDARD SPECIFICATIONS FOR ROAD AND BRIDGE CONSTRUCTION", ADOPTED JANUARY 1, 2012.

THE WORK INVOLVED ON THIS SECTION CONSISTS OF THE REMOVAL OF THE EXISTING STRUCTURE, THE CONSTRUCTION OF A 55 FOOT LONG SINGLE SPAN PRECAST, PRESTRESSED CONCRETE DECK BEAM BRIDGE, EARTH APPROACHES, AGGREGATE SURFACE COURSE AND OTHER MISCELLANEOUS ITEMS NECESSARY TO COMPLETE THIS SECTION.

ALL ELEVATIONS ARE BASED ON U.S.G.S. MEAN SEA LEVEL DATUM.

IT SHALL BE THE CONTRACTOR'S RESPONSIBILITY TO CONTACT ALL THE UTILITIES, AFFECTING THE PROJECT, PRIOR TO CONSTRUCTION.

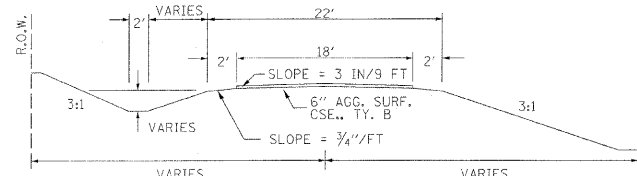
AGGREGATE SURFACE COURSE, TYPE B INCLUDES 24 TON FOR FILL NEXT TO THE BRIDGE, 25 TON FOR FIELD ENTRANCE, AND 266 TON FOR THE ROADWAY.

NOTE: CONSTRUCTION TRANSITION  
STA. 2+50 TO STA 3+00  
STA. 6+85 TO STA 7+35

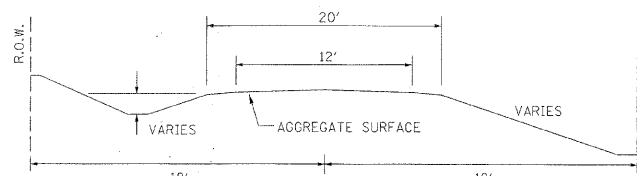
ALL QUANTITIES ARE INCLUDED IN THE PROPOSAL



**TYPICAL CROSS SECTION PROPOSED**



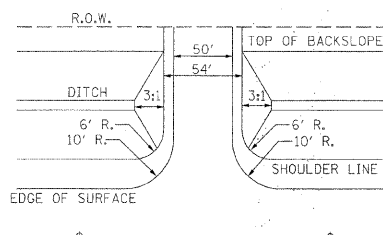
**TYPICAL CROSS SECTION EXISTING**



**UTILITIES:**

J.U.L.I.E. 1-800-892-0123

**FIELD ENTRANCE DETAIL**



NOTE: CONSTRUCT SPECIAL DITCH

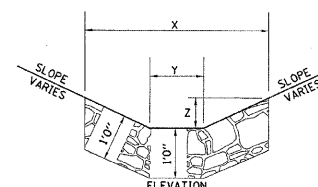
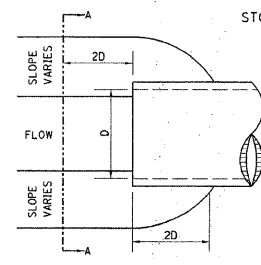
STA 3+00 TO STA 3+50 LT  
STA 2+50 TO STA 4+75 RT  
STA 5+25 TO STA 7+35 LT  
STA 5+24 TO STA 7+35 RT

NOTE: CONSTRUCT STONE LINED DITCH

STA 4+25 TO STA 4+50 RT (0.62 TON/LIN FT)  
STA 5+24 TO STA 5+50 LT & RT (0.62 TON/LIN FT)  
48 TON STONE LINED DITCH.

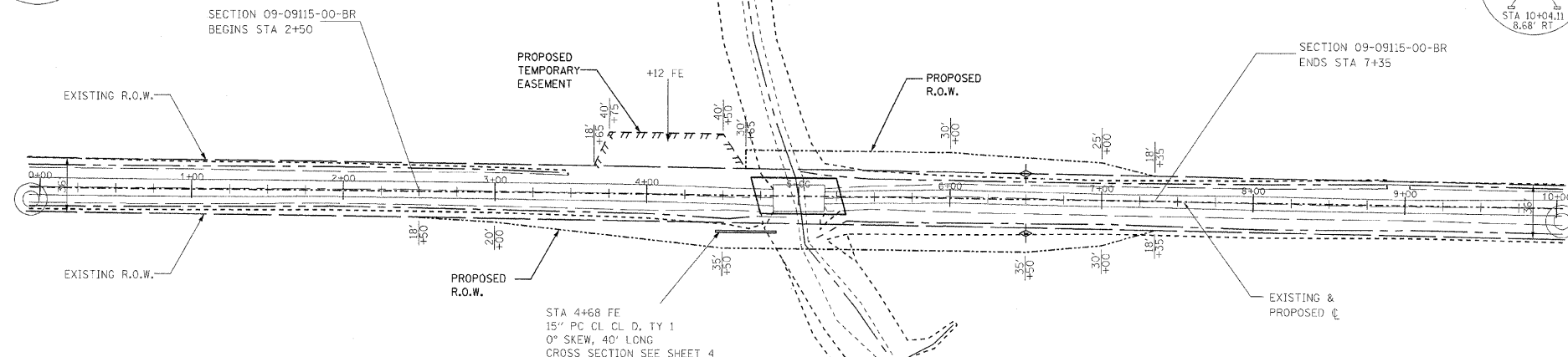
SEE STONE LINED DITCH DESIGN.

**STONE LINED DITCH DESIGN**



NOTES	SLOPE		
BOTTOM OF DITCH	1 1/2:1	2:1	3:1
2 FT	X = 5 FT	6 FT	8 FT
	Y = 2 FT	2 FT	2 FT
	Z = 1 FT	1 FT	1 FT
	0.40	0.48	0.62 TON/LIN. FT

NOTE: FOR PLACEMENT, QUALITY GRADATION AND OTHER MISCELLANEOUS REQUIREMENTS FOR STONE LINED DITCH-SEE SPECIAL PROVISIONS.



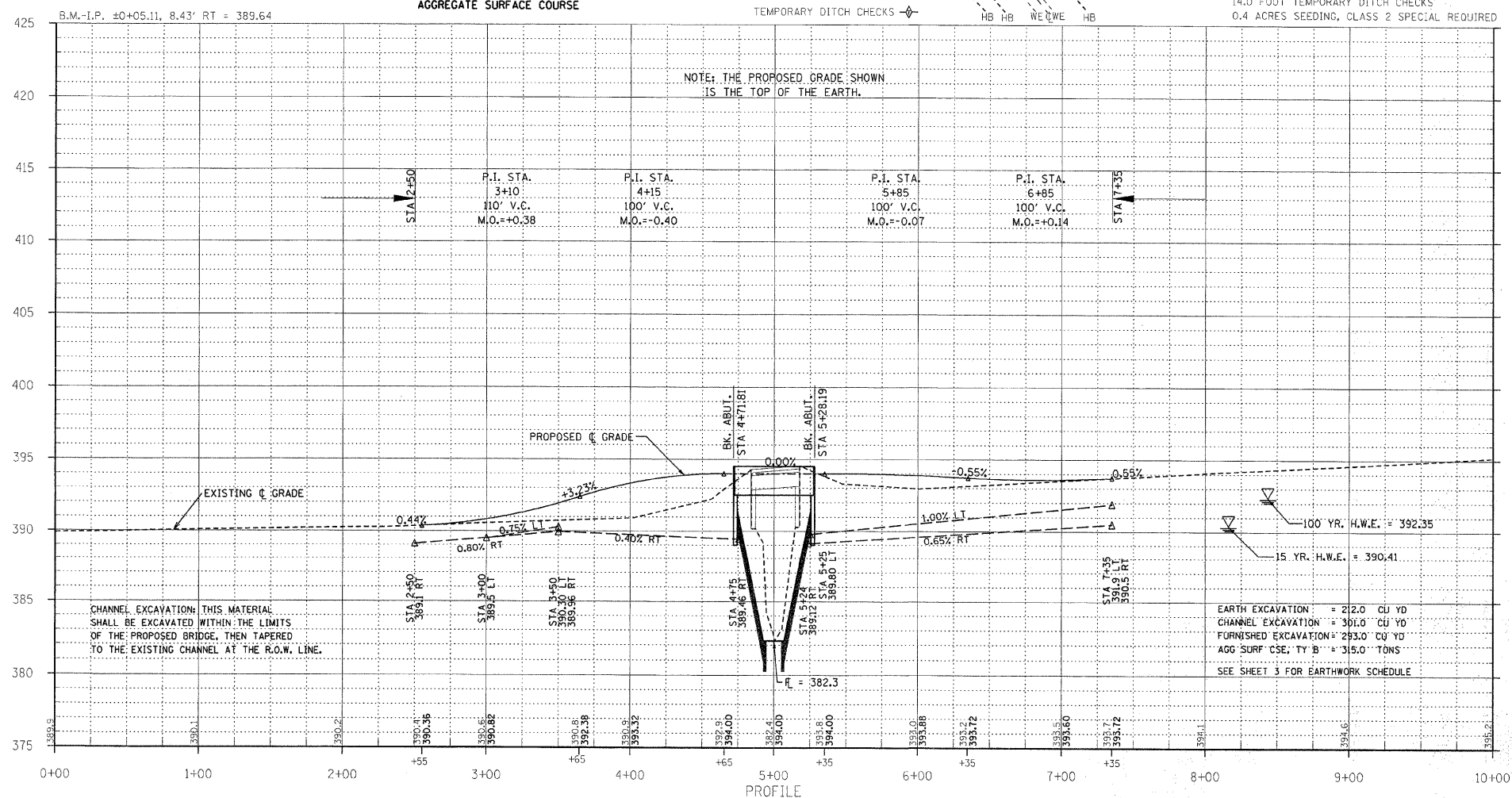
EXISTING BRIDGE STA 5+00.8; STRUCTURE NUMBER: 033-3242  
A 28.2' LONG SINGLE SPAN BRIDGE WITH A 2 1/2" WOOD DECK WITH 2 1/2" WOOD RUNNERS ON 1-12" C-CHANNEL AND 10-12" I BEAMS ON CONCRETE ABUTMENTS WITH 4"x24" STEEL PLATE RETAINING WALL 5' EAST OF WEST ABUTMENT AND 7-4" C-CHANNELS DRIVEN WEST OF THE EAST ABUTMENT.

ONE (1) EACH-REMOVAL OF EXISTING STRUCTURES ALLOWED IN THIS PROPOSAL.

PROPOSED STRUCTURE: NO. 033-3311, STA 5+00, A 55' LONG SINGLE SPAN P.P.C.D.B. BRIDGE WITH 21" DEPTH BEAMS, SPILL THROUGH TYPE ABUTMENTS, 24' WIDTH, 15' RT. FWD. SKEW.

SEE BRIDGE PLAN SHEETS FOR THE DESIGN AND BILL OF MATERIALS.

NOTE: FILL NEXT TO BRIDGE TO BE AGGREGATE SURFACE COURSE



CHANNEL EXCAVATION: THIS MATERIAL SHALL BE EXCAVATED WITHIN THE LIMITS OF THE PROPOSED BRIDGE, THEN TAPERED TO THE EXISTING CHANNEL AT THE R.O.W. LINE.

EARTH EXCAVATION = 212.0 CU YD  
CHANNEL EXCAVATION = 301.0 CU YD  
FURNISHED EXCAVATION = 293.0 CU YD  
AGG SURF CSE, TY B = 315.0 TONS  
SEE SHEET 3 FOR EARTHWORK SCHEDULE

T.R.	SECTION	COUNTY	TOTAL SHEETS	SHEET NO.
107	09-09115-00-BR	HAMILTON	12	2
FED. ROAD DIST. NO. 9 ILLINOIS		FED. AID PROJECT		
PROJECT# BROS-065(049)		CONTRACT# 99465		
JOB NO. C-99-558-09		TRIBUTARY BIG CREEK		
LEC JOB # H09(10)4M				

323 W. 3RD ST.  
P.O. BOX 160  
MT. CARMEL, IL  
62963  
PHONE:  
(618)-262-8651  
FAX:  
(618)-263-3327

405 W. STATE ST  
SUITE 1  
PRINCETON, IN  
47670  
PHONE:  
(812)-386-7611  
FAX:  
(812)-385-2812



PROFESSIONAL DESIGN FIRM  
LAND SURVEY & PROFESSIONAL ENGINEERING CORPORATION  
184-000857  
(62-032435)(35-002769)



AARON M. MEFFORD  
NAME  
*Aaron Mefford*  
SIGNATURE  
2-7-12  
DATE  
11-30-13  
EXPIRES

TOWNSHIP ROUTE 107  
OVER TRIBUTARY BIG CREEK  
HAMILTON COUNTY, ILLINOIS

SHEET TITLE:

PLAN & PROFILE

SCALE: VARIES  
BY: AMM  
DATE: 2012  
REV:

2 OF 12 SHEETS

SHEET NO. 2