

ROUTE NO.	SECTION	COUNTY	TOTAL SHEETS	SHEET NO.
T.R. 91	09-06122-00-BR	JEFFERSON	37	1
FED. ROAD DIST. NO.		ILLINOIS CONTRACT NO. 99471		

**STATE OF ILLINOIS
DEPARTMENT OF TRANSPORTATION
DIVISION OF HIGHWAYS**

**PLANS FOR PROPOSED
HIGHWAY BRIDGE PROGRAM**

**PROJECT BROS-0081(063)
SECTION 09-06122-00-BR
FARRINGTON ROAD DISTRICT
JEFFERSON COUNTY
T.R. 91 / MALECKI ROAD
PROPOSED STRUCTURE NO. 041-3748
PROPOSED STRUCTURE NO. 041-5077
C-99-530-10**

INDEX OF SHEETS

SHEET NO.	DESCRIPTION
1.	COVER SHEET
2.	SUMMARY OF QUANTITIES AND GENERAL NOTES
3.	SCHEDULE OF QUANTITIES
4.	TYPICAL CROSS SECTIONS
5-7.	PLAN & PROFILE
8-21.	STATION CROSS SECTIONS
22-25.	CULVERT PLANS
26-36.	BRIDGE PLANS
37.	BORINGS

HIGHWAY STANDARDS:

000001-06	STANDARD SYMBOLS, ABBREVIATIONS, AND PATTERNS
280001-06	TEMPORARY EROSION CONTROL SYSTEMS
515001-03	NAME PLATE FOR BRIDGES
635006-03	REFLECTOR AND TERMINAL MARKER PLACEMENT
701901-02	TRAFFIC CONTROL DEVICES
BLR 21-9	TYPICAL APPLICATION OF TRAFFIC CONTROL DEVICES FOR CONSTRUCTION ON RURAL LOCAL HIGHWAYS
BLR 23-4	TRAFFIC BARRIER TERMINAL, TYPE 1
BLR 27-1	TRAFFIC BARRIER TERMINAL, TYPE 5A

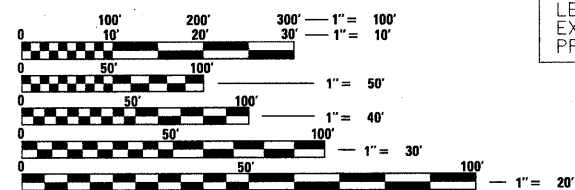
UTILITIES

ELECTRIC:
TRI-COUNTY ELECTRIC COOPERATIVE
3906 BROADWAY
MT. VERNON, IL 62864
ATTN: DENNIS IVERS

TELEPHONE:
AT&T / DISTRIBUTION
210 NORTH LOCUST
FLOOR 2
CENTRALIA, IL 62801

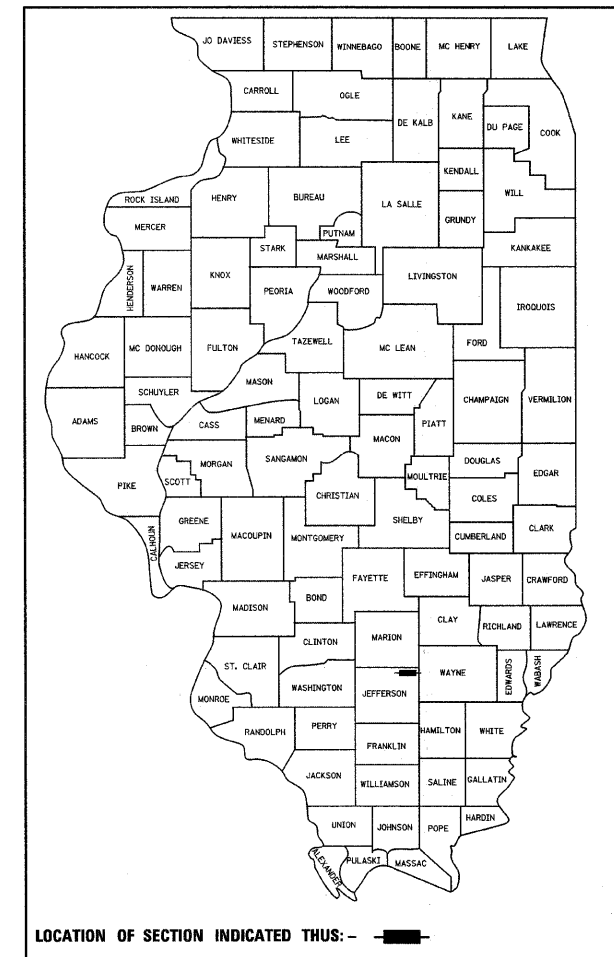
WATER:
NORTHEAST WATER CO.
1018 JORDAN ST.
MT. VERNON, IL 62864
ATTN: THADDEUS STALEY

PETROLEUM:
COUNTY MARK COOPERATIVE
1200 REFINERY ROAD
MT. VERNON, IN 47620
ATTN: JIM CRUISE



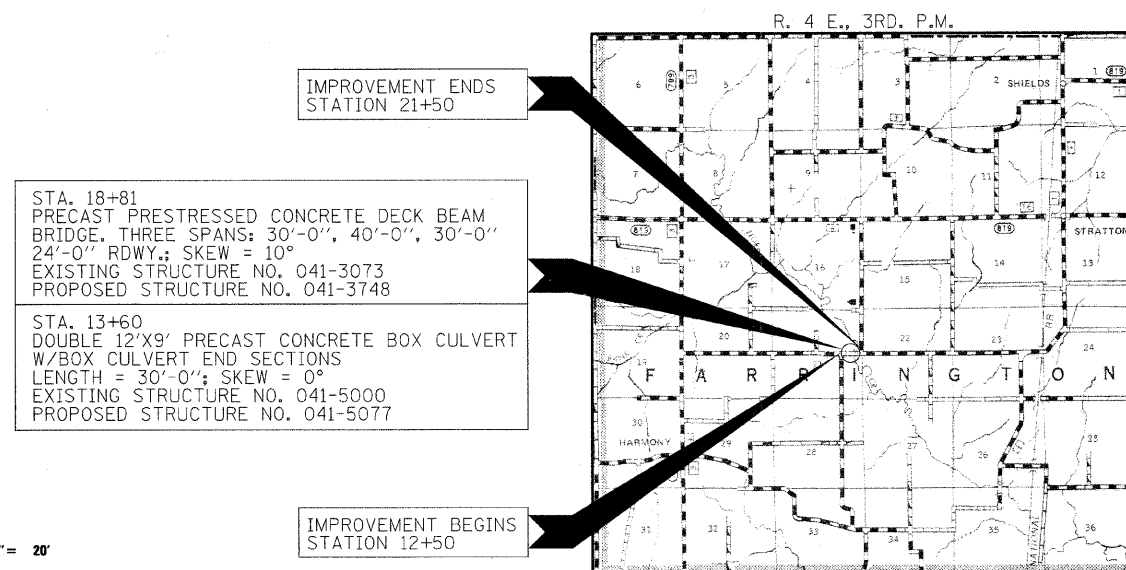
FULL SIZE PLANS HAVE BEEN PREPARED USING STANDARD ENGINEERING SCALES. REDUCED SIZED PLANS WILL NOT CONFORM TO STANDARD SCALES. IN MAKING MEASUREMENTS ON REDUCED PLANS, THE ABOVE SCALES MAY BE USED.

CONTRACT NO. 99471



FUNCTIONAL CLASSIFICATION: LOCAL ROAD (NON-URBAN)
DESIGN SPEED: 30 MPH
DESIGN TRAFFIC: 150 ADT

ILLINOIS DEPARTMENT OF TRANSPORTATION	
APPROVED	3-1 20 12 <i>[Signature]</i> COUNTY ENGINEER
APPROVED	3-8 20 12 <i>[Signature]</i> TOWNSHIP COMMISSIONER
PASSED	3/13 20 12 <i>[Signature]</i> DISTRICT NINE ENGINEER OF LOCAL ROADS & STREETS
Releasing For Bid Based on Limited Review	3/13 2012 <i>[Signature]</i> DEPUTY DIRECTOR OF HIGHWAYS REGION FIVE ENGINEER STATE OF ILLINOIS DEPARTMENT OF TRANSPORTATION



STA. 18+81
PRECAST PRESTRESSED CONCRETE DECK BEAM BRIDGE. THREE SPANS: 30'-0", 40'-0", 30'-0" 24'-0" RDWY.; SKEW = 10°
EXISTING STRUCTURE NO. 041-3073
PROPOSED STRUCTURE NO. 041-3748

STA. 13+60
DOUBLE 12'X9' PRECAST CONCRETE BOX CULVERT W/BOX CULVERT END SECTIONS
LENGTH = 30'-0"; SKEW = 0°
EXISTING STRUCTURE NO. 041-5000
PROPOSED STRUCTURE NO. 041-5077

LOCATION MAP

APPROXIMATE SCALE: 0 1 MILE
NET LENGTH OF SECTION = 900 FEET = 0.170 MILES

DATE: 2/23/2012
STEVEN W. MEGGINSO
ILLINOIS PROFESSIONAL DESIGN FIRM LS / PE / SE CORPORATION
EXPIRES: 1/30/2013

HAMPTON, LENZINI AND RENWICK, INC.
CIVIL ENGINEERS • STRUCTURAL ENGINEERS • LAND SURVEYORS
HLR
3085 STEVENSON DRIVE, SUITE 201
SPRINGFIELD, ILLINOIS 62703
217.546.3400 www.hlrengineering.com
184.000959
ILLINOIS PROFESSIONAL DESIGN FIRM LS / PE / SE CORPORATION
PROJECT NUMBER: 11.0266.130 DATE: 02/20/12