

CONSTRUCTION PLANS FOR GREATER BEARDSTOWN AIRPORT

BEARDSTOWN, CASS COUNTY, ILLINOIS

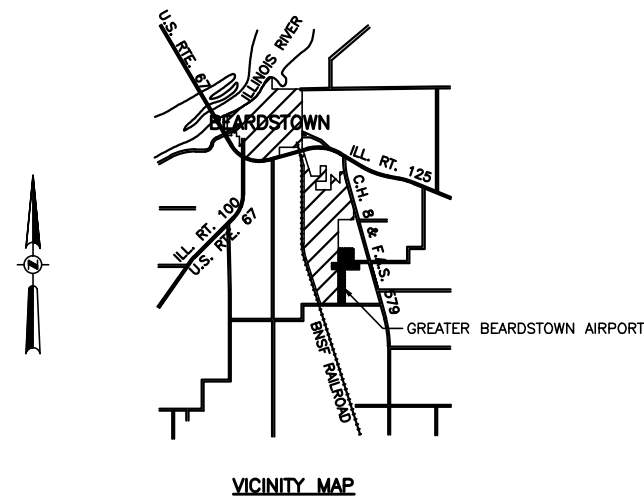
TREE CLEARING PARALLEL TO THE RUNWAY

SUMMARY OF QUANTITIES				
ITEM NO.	DESCRIPTION	UNIT	AS BID QUANTITY	AS BUILT QUANTITY
AR151420	CLEARING TREES 0-2.5' BUTT. DIA.	EACH	15	
AR151450	CLEARING AND GRUBBING	ACRE	12.6	
AR156510	SILT FENCE	LIN. FT.	1,650	
AR901510	SEEDING	ACRE	12.8	
AR908510	MULCHING	ACRE	12.8	

ILLINOIS PROJECT NO. K06-4121
AIP PROJECT NO. 3-17-0004-B13

MARCH 23, 2012

INDEX OF SHEETS	
NO.	DESCRIPTION
1	COVER SHEET
2	IMPROVEMENT AND SAFETY PLAN
3	TREE CLEARING PLAN
4	EROSION CONTROL PLAN



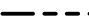
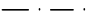



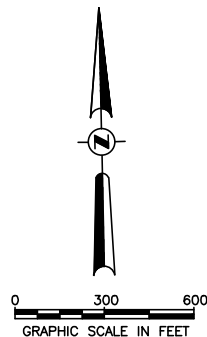
	PLANS PREPARED BY :	CITY OF BEARDSTOWN, ILLINOIS
	HUTCHISON, ENGINEERING INC. JACKSONVILLE, ILLINOIS	APPROV <i>Robert L. Webb</i> _____ MAYOR
EXPIRES 11/30/2013	SUBMITTED <i>Gary L. Hutchison</i> _____	DATE <i>December 20, 2011</i> _____
ENGINEER'S SEAL	DATE <i>December 20, 2011</i> _____	APPROVED <i>B. J. Smith</i> _____ CITY CLERK
		DATE <i>December 20, 2011</i> _____

CONSTRUCTION PROCEDURE NOTES

1. ALL CONTRACTOR EMPLOYEES WILL PARK THEIR PERSONAL VEHICLES IN THE AREA DESIGNATED IN THESE PLANS FOR USE AS A VEHICLE PARKING AREA. ONLY AUTHORIZED CONTRACTOR VEHICLES WILL BE ALLOWED ON THE AIR OPERATIONS AREA OF THE AIRPORT AND ON THE CONSTRUCTION SITE.
2. FLAGS WILL BE REQUIRED ON ALL CONTRACTOR'S VEHICLES AND EQUIPMENT USED ON THE AIRPORT OPERATIONS AREA. THE FLAGS SHALL BE THREE (3) FOOT SQUARE CHECKERED FLAGS (INTERNATIONAL ORANGE AND WHITE) DISPLAYED IN FULL VIEW ABOVE THE VEHICLE.
3. THE CONTRACTOR WILL USE THE DESIGNATED HAUL ROUTE AND EQUIPMENT STORAGE AREA SHOWN ON THIS SHEET. IT WILL BE THE CONTRACTOR'S RESPONSIBILITY TO MAINTAIN THE DESIGNATED HAUL ROUTE AND EQUIPMENT STORAGE AREA FOR THE DURATION OF THE PROJECT. ANY DAMAGE TO EXISTING PAVEMENTS USED TO HAUL MATERIAL ON THE AIRPORT SITE WILL BE REPAIRED BY THE CONTRACTOR AT HIS OWN EXPENSE TO THE SATISFACTION OF THE AIRPORT MANAGER AND THE RESIDENT ENGINEER.
4. CONSTRUCTION ACTIVITY CONTROL AND OPERATION AREA PROTECTION SHALL BE ACCOMPLISHED IN ACCORDANCE WITH FAA ADVISORY CIRCULAR NO. 150/5370-2F.
5. THE TALLEST CONSTRUCTION EQUIPMENT UTILIZED ON THE AIRPORT FOR THIS PROJECT IS ANTICIPATED TO BE 50'±.
6. THE AIRPORT MANAGER WILL ISSUE A NOTAM THAT CONSTRUCTION IS BEING PERFORMED TO CLEAR TREES ALONG BOTH SIDES OF RUNWAY 18-36.
7. THIS PROJECT CONSISTS OF WORK TO PERFORM TREE CLEARING ALONG RUNWAY 18-36.
8. THIS PROJECT WILL DISTURB MORE THAN 1 ACRE OF LAND.
9. THE EXISTING AIRPORT REFERENCE CODE FOR RUNWAY 18-36 IS B-1.
10. IT IS ANTICIPATED THAT THE CONTRACTOR'S VEHICLES AND CONSTRUCTION EQUIPMENT WILL NOT ENCROACH WITHIN THE 120' RUNWAY SAFETY AREA (R.S.A) OF RUNWAY 18-36 DURING THIS CONSTRUCTION. IF IT BECOMES NECESSARY TO ENCROACH INTO THE R.S.A., IT WILL BE THE CONTRACTOR'S RESPONSIBILITY TO PROVIDE, PLACE AND MAINTAIN THE NECESSARY CLOSED RUNWAY MARKERS IN ACCORDANCE WITH FAA ADVISORY CIRCULAR NO. 150/5370-2F, SECTION 218.b.(1). THE CONTRACTOR SHALL ALSO COORDINATE WITH THE AIRPORT MANAGER FOR ISSUANCE OF A NOTAM FOR THE RUNWAY CLOSURE. COSTS ASSOCIATED WITH ACCOMPLISHING THE RUNWAY CLOSURE SHALL BE CONSIDERED INCIDENTAL TO THE CONTRACT AND NO ADDITIONAL COMPENSATION ALLOWED.
11. CONTRACTOR'S VEHICLES AND EQUIPMENT SHALL NOT ENCROACH WITHIN 45' OF THE Q OF AN ACTIVE TAXIWAY OR TAXILANE.

LEGEND

-  EXISTING BUILDINGS
-  CONTRACTOR'S ACCESS/HAUL ROUTE
-  AIRPORT PROPERTY LINE
-  AVIGATION EASEMENT LINE
-  PROPOSED TREE CLEARING LOCATIONS



THE CONTRACTOR WILL CLOSE AND LOCK THE GATE AT THIS LOCATION AT THE END OF EACH CONSTRUCTION DAY. CONTRACTOR TO INSTALL HIS OWN LOCK AND GIVE A SPARE KEY TO THE AIRPORT MANAGER.

RUNWAY 0 EXTENDED TO PROPERTY LINE
LAT. 39°58'50.23"
LONG. 90°24'20.58"
GROUND ELEV. 464.5

RUNWAY END 18
ELEV. 464.0
LAT. 39°58'43.90"
LONG. 90°24'20.73"

N.W. CORNER OF CONTRACTOR PARKING
LAT. 39°58'37.62"
LONG. 90°24'16.35"
GROUND ELEV. 464.0

APPROXIMATE LOCATION OF CONTRACTOR'S CONSTRUCTION EQUIPMENT AND EMPLOYEE PARKING - COORDINATE WITH THE AIRPORT MANAGER.

APPROXIMATE LOCATION OF CONTRACTOR'S ACCESS/HAUL ROUTE. COORDINATE WITH AIRPORT MANAGEMENT.

LIMIT OF CONSTRUCTION NEAREST TO RUNWAY
LAT. 39°58'24.21"
LONG. 90°24'23.16"
GROUND ELEV. 460.1

LIMIT OF CLEARING AND GRUBBING CONSTRUCTION
LAT. 39°58'10.51"
LONG. 90°24'19.18"
GROUND ELEV. 468.9

HAUL ROAD
LAT. 39°58'07.13"
LONG. 90°24'24.09"
GROUND ELEV. 463.0

APPROXIMATE LOCATION OF CONTRACTOR'S ACCESS/HAUL ROUTE. COORDINATE WITH AIRPORT MANAGEMENT.

RUNWAY END 36
ELEV. 465.6
LAT. 39°58'04.37"
LONG. 90°24'21.68"

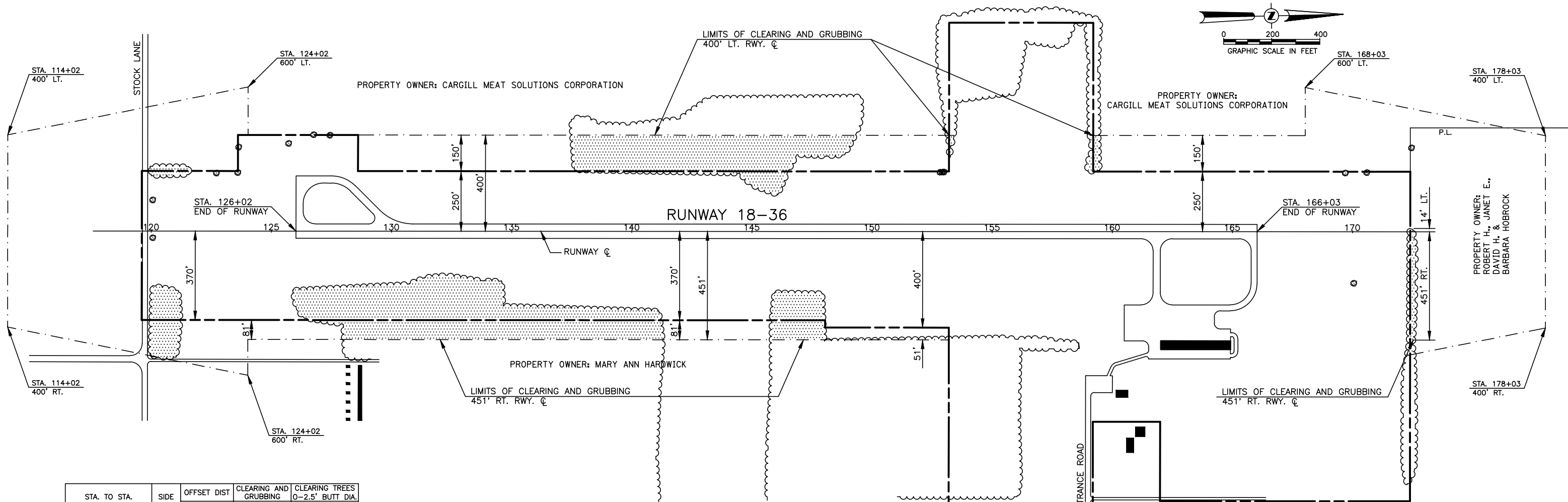
HAUL ROAD
LAT. 39°57'58.30"
LONG. 90°24'23.64"
GROUND ELEV. 464.3

GENERAL NOTE

THE CONTRACTOR SHALL BE RESPONSIBLE FOR PROTECTING UTILITY PROPERTY FROM CONSTRUCTION OPERATIONS. PRIOR TO STARTING WORK, THE CONTRACTOR SHALL CONTACT J.U.L.I.E. (JOINT UTILITY LOCATING INFORMATION FOR EXCAVATORS) PHONE 1-800-892-0123 OR 811 TO ARRANGE FOR LOCATION OF UTILITIES IN THE WORK AREA. A MINIMUM OF FORTY-EIGHT HOURS ADVANCE NOTICE IS REQUIRED FOR NON-EMERGENCY WORK.

COUNTY - CASS
CITY - BEARDSTOWN
TOWNSHIP - T. 18 N., R. 12 W. 3rd P.M.
SECTION NO. - 25 & 36

GREATER BEARDSTOWN AIRPORT BEARDSTOWN, ILLINOIS	
IMPROVEMENT AND SAFETY PLAN	
HUTCHISON ENGINEERING, INC. JACKSONVILLE, ILLINOIS	
DRAWN BY: R.L.R. DATE: DECEMBER, 2011	ILL. PROJ. NO. K06-4121 AIP PROJ. NO. 3-17-0004-B13



STA. TO STA.	SIDE	OFFSET DIST FEET	CLEARING AND GRUBBING ACRE	CLEARING TREES 0-2.5" BUTT DIA. EACH
119+97 TO 121+53	LT.	232' TO 269'	0.1	
120+05 TO 121+22	RT.	227' TO 527'	0.7	
120+06	LT.	129'		1
120+06	RT.	28'		1
122+71	LT.	250'		1
123+60	LT.	250'		1
123+64	LT.	350'		1
125+72	LT.	365'		1
125+88 TO 141+29	RT.	183' TO 451'	6.4	
126+76	LT.	399'		1
127+43	LT.	399'		1
137+52 TO 149+30	LT.	152' TO 400'	4.0	
145+83 TO 148+00	RT.	254' TO 451'	0.9	
152+84	LT.	249'		1
152+93	LT.	249'		1
153+00	LT.	249'		1
153+14 TO 153+40	LT.	352' TO 400'	0.05	
158+97 TO 159+42	LT.	253' TO 400'	0.15	
169+70	LT.	249'		1
170+05	RT.	215'		1
170+60	LT.	247'		1
172+27 TO 172+53	LT.&RT.	14' TO 451'	0.3	
172+46	LT.	349'		1
TOTALS			12.6	15

GENERAL NOTES

1. THE CONTRACTOR SHALL COORDINATE HIS START OF WORK OPERATIONS IN ADVANCE WITH THE RESIDENT ENGINEER AND THE AIRPORT MANAGEMENT IN ORDER THAT AIRPORT MANAGEMENT CAN NOTIFY AND INFORM THE ADJACENT PROPERTY OWNERS THAT TREE CLEARING AND GROUND SURFACE RESTORATION (SHAPING, SEEDING, MULCHING, ETC.) WILL BE ACCOMPLISHED WITHIN THE LIMITS OF THE AVIGATION EASEMENT THAT HAS BEEN GRANTED OVER THEIR PROPERTY.
2. IN ORDER TO REFRAIN FROM UNNECESSARILY REMOVING A PORTION OF THE EXISTING FENCE SO AS TO ACCESS THE CARGILL CORPORATION PROPERTY FOR TREE REMOVAL, ETC., THE CONTRACTOR MAY REQUEST THAT THE AIRPORT MANAGEMENT COORDINATE WITH CARGILL FOR PERMISSION TO USE AN EXISTING ACCESS GATE AND HAUL ROAD TO ACCESS THE TREE REMOVAL AREAS, DISPOSE OF THE REMOVED VEGETATIVE MATERIALS AND PERFORM GROUND SURFACE RESTORATION.
3. TREE CLEARING AND GRUBBING SHALL BE ACCOMPLISHED TAKING CARE NOT TO DAMAGE ANY EXISTING FENCE WITHIN THE WORK AREAS. EXISTING FENCE THAT IS REMOVED BY THE CONTRACTOR IN ORDER TO ACCOMPLISH THE WORK SHALL BE RE-ERECTED IN ITS ORIGINAL LOCATION BY THE CONTRACTOR UPON COMPLETION OF THE WORK. THE COST OF REMOVING AND RE-ERECTING THE FENCE SHALL BE CONSIDERED INCIDENTAL TO THE COST OF THE CLEARING AND GRUBBING AND NO ADDITIONAL COMPENSATION WILL BE ALLOWED.
4. ALL TREES AND SPOIL MATERIALS RESULTING FROM THE CLEARING AND GRUBBING SHALL BE REMOVED FROM THE CLEARING AND GRUBBING SITES AND DISPOSED OF OFF THE PROPERTY BY THE CONTRACTOR.
5. BURNING OF THE SPOIL MATERIAL ON THE AIRPORT SITE WILL BE ALLOWED PROVIDED THAT BURNING IS OUTSIDE 500 FEET OF RUNWAY CENTERLINE AND THE CONTRACTOR HAS PROCURED AN EPA CLEAN AIR PERMIT FOR BURNING, REQUIRING USE OF AN AIR CURTAIN DESTRUCTOR, AND ANY ADDITIONAL BURN PERMITS REQUIRED BY OTHER STATE AND LOCAL REGULATING AGENCIES HAVING JURISDICTION OVER THE AIRPORT. THE CONTRACTOR SHALL PROVIDE A COPY OF SAID PERMITS TO THE RESIDENT ENGINEER PRIOR TO PROCEEDING WITH BURNING.
6. ALL COSTS ASSOCIATED WITH BURNING AND/OR DISPOSING OF THE REMOVED TREES AND SPOIL MATERIAL SHALL BE INCLUDED IN THE UNIT PRICE BID PER ACRE FOR CLEARING AND GRUBBING.
7. IN THE AREAS IN WHICH CLEARING AND GRUBBING ARE PERFORMED, THE DISTURBED GROUND SURFACE SHALL BE GRADED AND SHAPED TO DRAIN IN A LIKE MANNER AS THE EXISTING GROUND CONTOUR OF THE AREA. THE COST OF GRADING AND SHAPING THE DISTURBED AREAS SHALL BE INCLUDED IN THE UNIT PRICE BID PER ACRE FOR CLEARING AND GRUBBING.

LEGEND

- EDGE OF TIMBER AND BRUSH
- PROPOSED CLEARING AND GRUBBING
- EXISTING AIRPORT PROPERTY LINE
- EXISTING AVIGATION EASEMENT LINE
- TREE TO BE CLEARED 0-2.5" BUTT DIA.

SEEDING NOTES

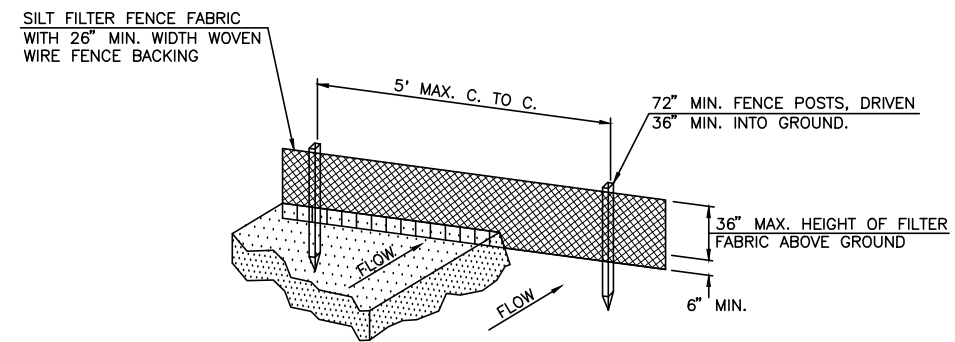
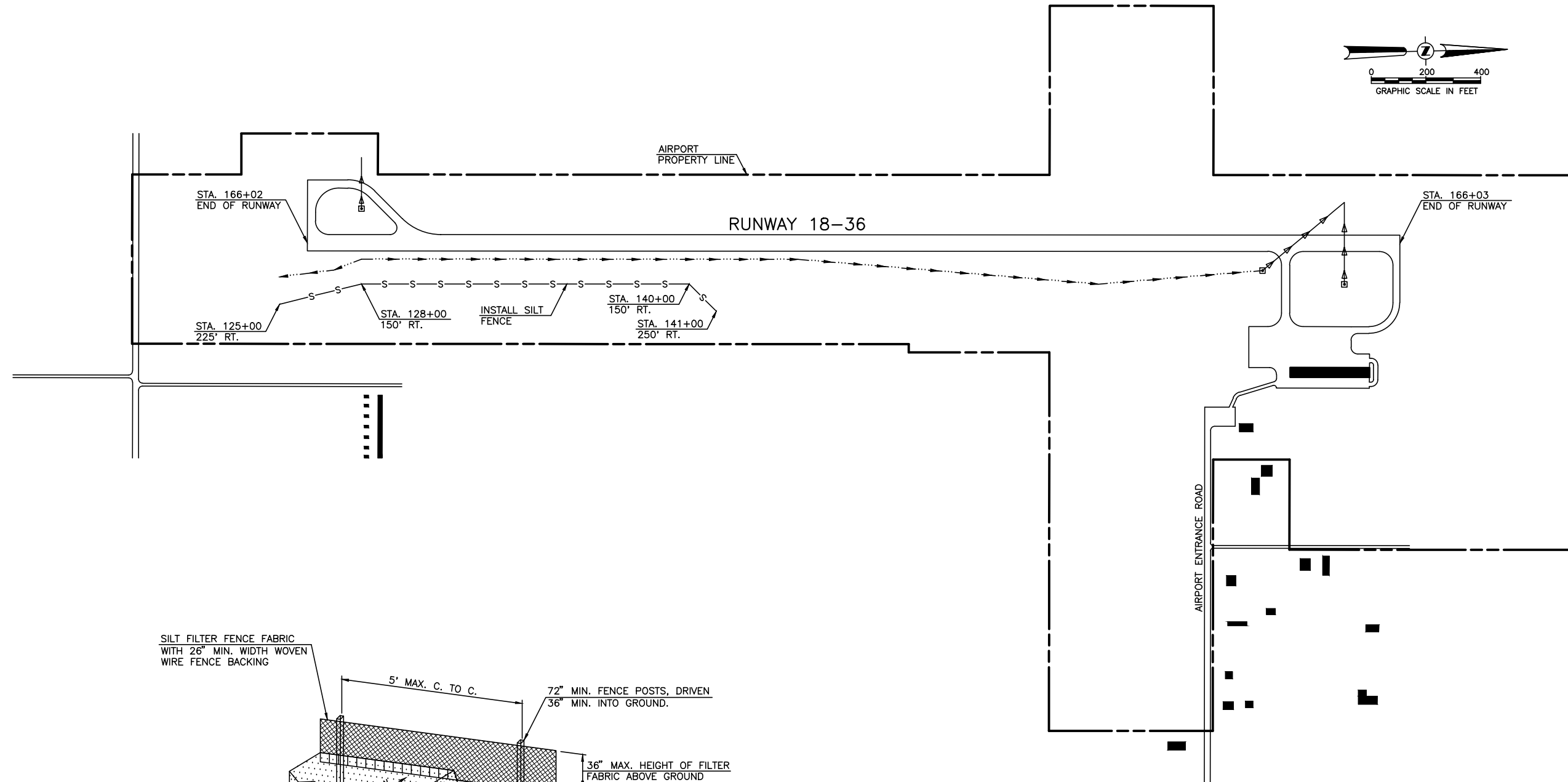
ALL AREAS DISTURBED BY THIS CONSTRUCTION PROJECT WITHIN THE TREE CLEARING LIMITS AND THE LOCATION OF THE SILT FENCE INSTALLATION AND REMOVAL AS SPECIFIED BELOW SHALL BE LIMED, FERTILIZED, SEEDED AND MULCHED. THESE AREAS SHALL CONSTITUTE THE SEEDING AND MULCHING AREAS DESIGNATED FOR PAYMENT.

ALL OTHER AREAS DISTURBED BY THE CONTRACTOR INCLUDING THE CONTRACTOR'S PARKING AREA, WASTE AREA, HAUL ROUTES, ETC. SHALL BE REGRADED AND RESEEDED AND/OR RESTORED TO THEIR ORIGINAL CONDITION BY THE CONTRACTOR AT HIS OWN EXPENSE UPON COMPLETION OF THE IMPROVEMENTS.

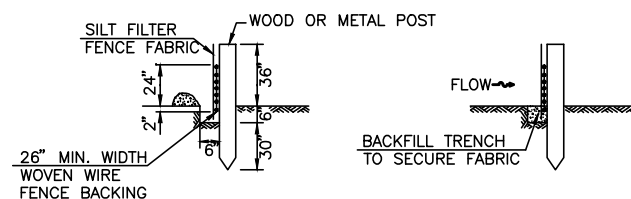
THE FOLLOWING AREAS CONSTITUTE THE AREA FOR PAYMENT :

RUNWAY 18-36 CLEARING AND GRUBBING LOCATIONS =	12.6 ACRE
SILT FENCE LOCATION RT. RWY. 18-36 STA. 125+00 TO 141+00 =	0.2 ACRE
TOTAL =	12.8 ACRE

GREATER BEARDSTOWN AIRPORT BEARDSTOWN, ILLINOIS	
TREE REMOVAL PLAN	
HUTCHISON ENGINEERING, INC. JACKSONVILLE, ILLINOIS	
DRAWN BY: R.L.R.	ILL. PROJ. NO. K06-4121
DATE : DECEMBER, 2011	AIP PROJ. NO. 3-17-0054-813



PERSPECTIVE VIEW



SECTION VIEW

EROSION CONTROL SILT FENCE DETAIL

- LEGEND**
- S— PROPOSED EROSION CONTROL SILT FENCE
 - <—> EXISTING STORM SEWER
 - >—> EXISTING DRAINAGE CHANNEL/SWALE/DITCH

NOTES

1. THE AREAS DISTURBED BY THE CONSTRUCTION SHOWN IN THESE PLANS SHALL BE SEEDED AND MULCHED IN ADDITION TO THE EROSION CONTROL METHODS SHOWN ON THIS SHEET.
2. THE AREAS DISTURBED BY THE INSTALLATION AND THE REMOVAL OF THE TEMPORARY EROSION CONTROL SYSTEMS SHALL ALSO BE SEEDED AND MULCHED UPON THEIR REMOVAL.
3. EROSION CONTROL DEVICES SHALL CONFORM TO THE ILLINOIS ENVIRONMENTAL PROTECTION AGENCY STANDARDS AND SPECIFICATIONS FOR SOIL EROSION AND SEDIMENT CONTROL - CURRENT EDITION.
4. THIS CONSTRUCTION PROJECT WILL RESULT IN THE DISTURBANCE OF APPROXIMATELY 13 ACRES OF LAND.
5. ADDITIONAL TEMPORARY EROSION CONTROL SYSTEMS (SILT FENCE) SHALL BE LOCATED AND CONFIGURED AS DIRECTED BY THE RESIDENT ENGINEER SHOULD THEIR USE BE REQUIRED TO CONTROL SILTATION.

GREATER BEARDSTOWN AIRPORT BEARDSTOWN, ILLINOIS	
EROSION CONTROL PLAN	
HUTCHISON ENGINEERING, INC. JACKSONVILLE, ILLINOIS	
DRAWN BY: R.L.R. DATE : DECEMBER, 2011	ILL. PROJ. NO. K06-4121 AIP PROJ. NO. 3-17-0054-B13