

SYMBOLS USED AS ABBREVIATIONS:

∠	ANGLE
⊕	CENTERLINE
▮	CHANNEL
D	PENNY
⊥	PERPENDICULAR
▯	PLATE
⊘	ROUND

ABBREVIATIONS:

ABV	ABOVE
AFF	ABOVE FINISHED FLOOR
ASC	ABOVE SUSPENDED CEILING
ACC	ACCESS
ACFL	ACCESS FLOOR
AP	ACCESS PANEL
ACP	ACOUSTICAL CEILING PANEL
ACPL	ACOUSTICAL PLASTER
ACT	ACOUSTICAL CEILING TILE
AGR	ACRYLIC PLASTIC
ADD	ADDENDUM
ADH	ADHESIVE
ADJ	ADJACENT
ADJ	ADJUSTABLE
AGG	AGGREGATE
A/C	AIR CONDITIONING
ALT	ALTERNATE
ALUM	ALUMINUM
ANC	ANCHOR, ANCHORAGE
AB	ANCHOR BOLT
ANOD	ANODIZED
APPROX	APPROXIMATE
ARCH	ARCHITECT (URAL)
AD	AREA DRAIN
ASPH	ASPHALT
AT	ASPHALT TILE
AUTO	AUTOMATIC
BP	BACK PLASTER (ED)
BSMT	BASEMENT
BRG	BEARING
BPL	BEARING PLATE
BJT	BED JOINT
BM	BENCH MARK
BLW	BELOW
BTWN	BETWEEN
BVL	BEVELED
BIT	BITUMINOUS
BLK	BLOCK
BLKG	BLOCKING
BO	BOARD
BS	BOTH SIDES
BL	BLIND
BW	BOTHWAYS
BOT	BOTTOM
BR	BRICK
BRZ	BRONZE
BLDG	BUILDING
BUR	BUILT UP ROOFING
BBD	BULLETIN BOARD
CAB	CABINET
CAD	CADMIUM
CPT	CARPET (ED)
CSMT	CASEMENT
CI	CAST IRON
CIPC	CAST-IN-PLACE CONCRETE
CST	CAST STONE
CB	CATCH BASIN

CK	CALK (ING), CAULK (ING)
CLG	CEILING
CHT	CEILING HEIGHT
CEM	CEMENT
PCPL	CEMENT PLASTER (PORTLAND)
CM	CENTIMETER (S)
CER	CERAMIC
CT	CERAMIC TILE
CMT	CERAMIC MOSAIC (TILE)
CBD	CHALKBOARD, CK.BD
CHAM	CHAMFER
CR	CURTAIN ROD
CIR	CIRCLE
CIRC	CIRCUMFERENCE
CLR	CLEAR (ANCE)
CLS	CLOSURE
CRC	COLD ROLLED CHANNEL
COL	COLUMN
COMB	COMBINATION
COMPT	COMPARTMENT
COMPO	COMPOSITION (COMPOSITE)
COMP	COMPRESS (ED), (ION), (IBLE)
CONC	CONCRETE
CMU	CONCRETE MASONRY UNIT (BLOCK)
CX	CONNECTION
CONST	CONSTRUCTION
CONT	CONTINUOUS OR CONTINUE
CONTR	CONTRACT (OR)
CLL	CONTRACT LIMIT LINE
CJT	CONTROL JOINT
CPR	COPPER
CG	CORNER GUARD
CORR	CORRIDOR
CTR	CENTER
CFL	COUNTERFLASHING
CS	COUNTERSINK
CTSX	COUNTERSUNK SCREW
CRS	COURSE (S)
CRG	CROSS GRAIN
CUFT	CUBIC FOOT
CYD	CUBIC YARD
DPR	DAMPER
DP	DAMP PROOFING
DL	DEAD LOAD
DEM	DEMOLISH, DEMOLITION
DMT	DEMOUNTABLE
DEP	DEPRESSED
DET	DETAIL
DIAG	DIAGONAL
DIA	DIAMETER
DIM	DIMENSION
DISP	DISPENSER
DIV	DIVISION
DR	DOOR
DA	DOUBLEACTING
DH	DOUBLE HUNG
DTA	DOVETAIL ANCHOR
DTS	DOVETAIL ANCHOR SLOT
DS	DOWNPOUT
DRAIN	DRAIN
DRB	DRAIN BOARD
DT	DRAIN TILE
DWR	DRAWER
DWGS	DRAWINGS
DF	DRINKING FOUNTAIN
DW	DUMBWAITER
E.F.	EACH FACE
E.I.F.S.	EXTERIOR INSULATION & FINISH SYSTEM
EJ	EXPANSION JOINT

ELEC	ELECTRIC (AL)
EP	ELECTRICAL PANELBOARD
EWG	ELECTRIC WATER COOLER
EL	ELEVATION
ELEV	ELEVATION/ELEVATOR
EMERG	EMERGENCY
ENC	ENCLOSE (URE)
EQ	EQUAL
EQP	EQUIPMENT
EST	ESTIMATE
EXCA	EXCAVATE
EXH	EXHAUST
EXG	EXISTING
EXMP	EXPANDED METAL PLATE
EB	EXPANSION BOLT
EXP	EXPOSED
EXT	EXTERIOR
EXS	EXTRA STRONG
F. BATT	FIBERGLASS INSULATION
FBR	FACE BRICK
FOC	FACE OF CONCRETE
FOF	FACE OF FINISH
FOM	FACE OF MASONRY
FOS	FACE OF STUDS
FCU	FAN COIL UNIT
FAS	FASTEN, FASTENER
FN	FENCE
FBD	FIBERBOARD
FGL	FIBERGLASS
FIN	FINISH (ED)
FFE	FINISHED FLOOR ELEVATION
FFL	FINISHED FLOOR LINE
FA	FIRE ALARM
FBRK	FIRE BRICK
FE	FIRE EXTINGUISHER
FEC	FIRE EXTINGUISHER CABINET
FH	FIRE HOSE STATION
FPL	FIREPLACE
FP	FIREPROOF
FRC	FIRE-RESISTANT COATING
FRT	FIRE-RETARDANT
FLASH	FLASHING
FHMS	FLATHEAD MACHINE SCREW
FHWS	FLATHEAD WOOD SCREW
FSR	FLEXIBLE SHEET ROOFING
FLR	FLOOR (ING)
FND	FEMININE NAPKIN DISPENSER
FNR	FEMININE NAPKIN RECEPTOR
FLCO	FLOOR CLEANOUT
FD	FLOOR DRAIN
FPL	FLOOR PLATE
FLUOR	FLUORESCENT
FJT	FLUSH JOINT
FTG	FOOTING
FRG	FORGED
FND	FOUNDATION
FR	FRAME (D), (ING)
FRA	FRESH AIR
FS	FULL SIZE
FURR	FURRED (ING)
FUT	FUTURE
GA	GAGE, GAUGE
GALV	GALVANIZED
GI	GALVANIZED IRON
GP	GALVANIZED PIPE
GSS	GALVANIZED STEEL SHEET
GSK	GASKET (ED)
GC	GENERAL CONTRACT (OR)
GL	GLASS, GLAZING

GBL	GLASS BLOCK
GLF	GLASS FIBER
GCMU	GLAZED CONCRETE MASONRY UNITS
GST	GLAZED STRUCTURAL TILE
GB	GRAB BAR
GR	GRADE, GRADING
GRN	GRANITE
GVL	GRAVEL
GF	GROUNDFACE
GT	GROUT
GPDW	GYPNUM DRYWALL
GPDW(MR)	GYPNUM DRYWALL, MOISTURE RESISTANT
GPL	GYPNUM LATH
GPPL	GYPNUM PLASTER
GPT	GYPNUM TILE
HH	HANDHOLE
HBD	HARDBOARD
HDW	HARDWARE
HWD	HARDWOOD
HJT	HEAD JOINT
HDR	HEADER
HTG	HEATING
HVAC	HEATING/VENTILATING/AIR CONDITIONING
HD	HEAVYDUTY
HT	HEIGHT
HX	HEXAGONAL
HES	HIGH EARLY-STRENGTH CEMENT
HC	HOLLOW CORE
HM	HOLLOW METAL
HK	HOOK (S)
HORZ	HORIZONTAL
HB	HOSE BIBB
WH	WATER HEATER
WCH	WATER HEATER
INCIN	INCINERATOR
INCL	INCLUDE (D), (ION)
NI	NICKEL
NR	NOISE REDUCTION
NRC	NOISE REDUCTION COEFFICIENT
NOM	NOMINAL
NMT	NONMETALLIC
N	NORTH
NIC	NOT IN CONTRACT
NTS	NOT TO SCALE
OBS	OBSCURE
OC	ON CENTER (S)
OP	OPAQUE
OPNG	OPENING
OJ	OPEN-WEB JOIST
OPP	OPPOSITE
OPH	OPPOSITE HAND
OPS	OPPOSITE SURFACE
OD	OUTSIDE DIAMETER
OHMS	OVALHEAD MACHINE SCREW
OHWS	OVALHEAD WOOD SCREW
OA	OVERALL
OH	OVERHEAD
PNT	PAINT (ED)
PNL	PANEL
PB	PANIC BAR
PTD	PAPER TOWEL DISPENSER
PTR	PAPER TOWEL RECEPTOR
PAR	PARALLEL
PK	PARKING
PBD	PARTICLE BOARD
PTN	PARTITION
PV	PAVE (D), (ING)
PVMT	LIMESTONE
PED	PEDESTAL
PERF	PERFORATE (D)
PERI	PERIMETER

MATERIAL DESIGNATIONS AND DETAIL SYMBOLS

PLAN SECTION

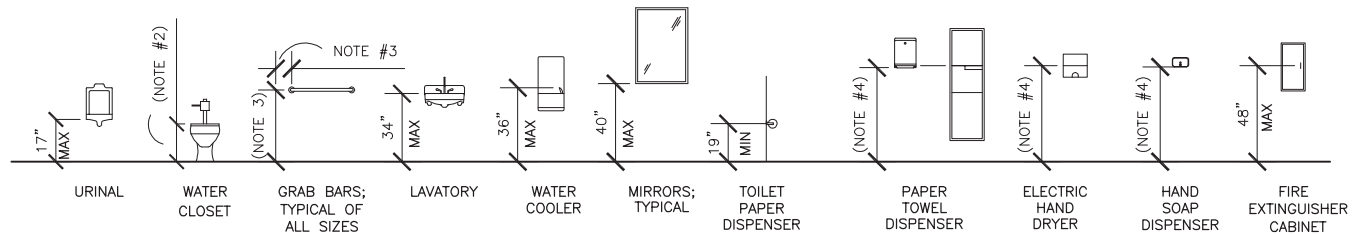
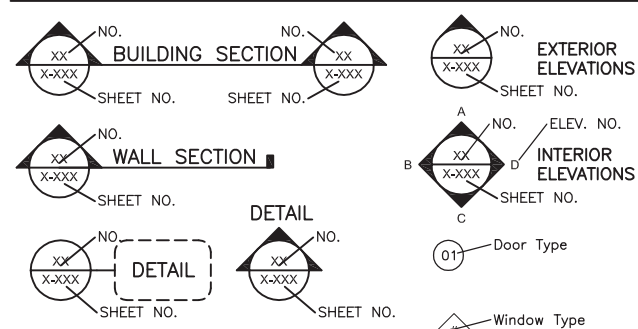
[Symbol]	EARTH
[Symbol]	POROUS FILL (STONE OR GRAVEL, ETC.)
[Symbol]	ROCK
[Symbol]	LIGHTWIEGT CONCRETE (OR CONCRETE FILL)
[Symbol]	STRUCTURAL CONCRETE (CAST-IN-PLACE PRECAST CAST STONE)
[Symbol]	BRICK (COMMON OR FACE)
[Symbol]	CONCRETE BLOCK (CMU)
[Symbol]	CUT STONE
[Symbol]	ALUMINUM
[Symbol]	METAL, STEEL (LARGE SCALE)
[Symbol]	METAL (SMALL SCALE STRUCTURAL & SHEET)
[Symbol]	PLYWOOD (LARGE SCALE)
[Symbol]	WOOD FINISHED

[Symbol]	WOOD ROUGH
[Symbol]	WOOD BLOCKING
[Symbol]	INSULATION (LOOSE OR BATT)
[Symbol]	INSULATION (RIGID)
[Symbol]	EXPANSION MATERIAL
[Symbol]	EXTERIOR INSULATION & FINISH SYSTEM
[Symbol]	GLASS (LARGE SCALE)
[Symbol]	ACOUSTICAL TILE
[Symbol]	CERAMIC TILE
[Symbol]	CARPET
[Symbol]	PLASTER, SAND, CEMENT, GROUT
[Symbol]	RESILIENT FLOORING
[Symbol]	TERRAZZO

ELEVATION

[Symbol]	CONCRETE, PLASTER
[Symbol]	BRICK
[Symbol]	CERAMIC TILE
[Symbol]	METAL
[Symbol]	GLAZING

DETAIL SYMBOLS



OPERATIONS BLDG: DISINFECTION

PROJECT CRITERIA

APPLICABLE CODES

1997 ILLINOIS ACCESSIBILITY CODE	2009 IBC
2009 IECC	2009 IMC
2008 NEC	2004 ILPC

DESIGN CRITERIA

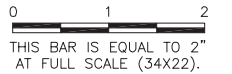
BUILDING:	USE GROUP:	TYPE OF CONST.:	SPRINKLED:	FIRE PROTECTION:
OPERATIONS BLDG: DISINFECTION	U, UTILITY	TYPE 2B	NONE	UNPROTECTED
BUILDING:	SQUARE FOOTAGE:	MAX. BUILDING HEIGHT:		
ELECTRICAL VAULT	= 1,440 S.F.	1 STORY / 14'-4"		

- THE ACCESSIBILITY DIAGRAMS INDICATE MOUNTING HEIGHTS FOR HANDICAP ACCESSIBLE FIXTURES AND ACCESSORIES.
- RIM OF FIXTURE OF WATER CLOSET TO BE 17" MIN. A.F.F. AND 19" MAX. A.F.F.
- ACCESSORY TO BE MOUNTED AT 33" MIN. A.F.F. AND 36" MAX. A.F.F. 36" REAR GRAB BAR SHALL BE MOUNTED 6" FROM ADJACENT WALL. 42" SIDE GRAB BAR SHALL BE MOUNTED 12" FROM REAR CORNER.
- ACCESSORY MOUNTED AT 48" MAX. A.F.F. FOR FORWARD REACH AND 54" A.F.F. FOR SIDE REACH.
- FOR ADDITIONAL INFORMATION REGARDING HANDICAP ACCESSIBLE FIXTURES AND/OR ACCESSORIES, SEE THE ILLINOIS ACCESSIBILITY CODE, ADA ACCESSIBILITY GUIDELINES, AND ANSI A117.1-1986. THE MOST STRINGENT SHALL BE REFERENCED.

UN051

REVISIONS

NUMBER	BY	DATE



WILLARD AIRPORT UNIVERSITY OF ILLINOIS

NEW AIRFIELD LIGHTING VAULT ARCHITECTURAL SYMBOLS, ABBREVIATIONS, & NOTES

GMT
 CRAWFORD, MURPHY & TILLY, INC.
 CONSULTING ENGINEERS
 License No. 184-000613

DESIGN BY:	SLR
DRAWN BY:	CMT
CHECKED BY:	GTC
APPROVED BY:	GTC
DATE:	APRIL 20, 2012
JOB No:	11059-03
IL PROJ. NO. CMI-4100 AIP PROJ. NO. 3-17-0016-XX	
SHEET	37 OF 60 SHEETS