

METAL DECK NOTES

1. MANUFACTURING, DETAILING AND ERECTING OF METAL DECK SHALL BE IN ACCORDANCE WITH STEEL DECK INSTITUTE SPECIFICATION. STRUCTURAL DIAPHRAGM ACTION SHALL BE PROVIDED BY METAL DECK AND ITS WELDED ATTACHMENT.
2. METAL FLOOR DECK SHALL BE CONTINUOUS OVER AT LEAST 3 SPANS WITH JOINTS OVER SUPPORTING MEMBERS. METAL ROOF DECK SHALL ALSO BE CONTINUOUS OVER AT LEAST 3 SPANS. SEE SPECIFICATIONS FOR FURTHER INFORMATION.
3. SUPPORT FASTENER LAYOUT SHALL BE 36/4 W/ #12 TEK SCREWS. SIDELAP FASTENERS SHALL BE 4- #10 TEK SCREWS PER SPAN.

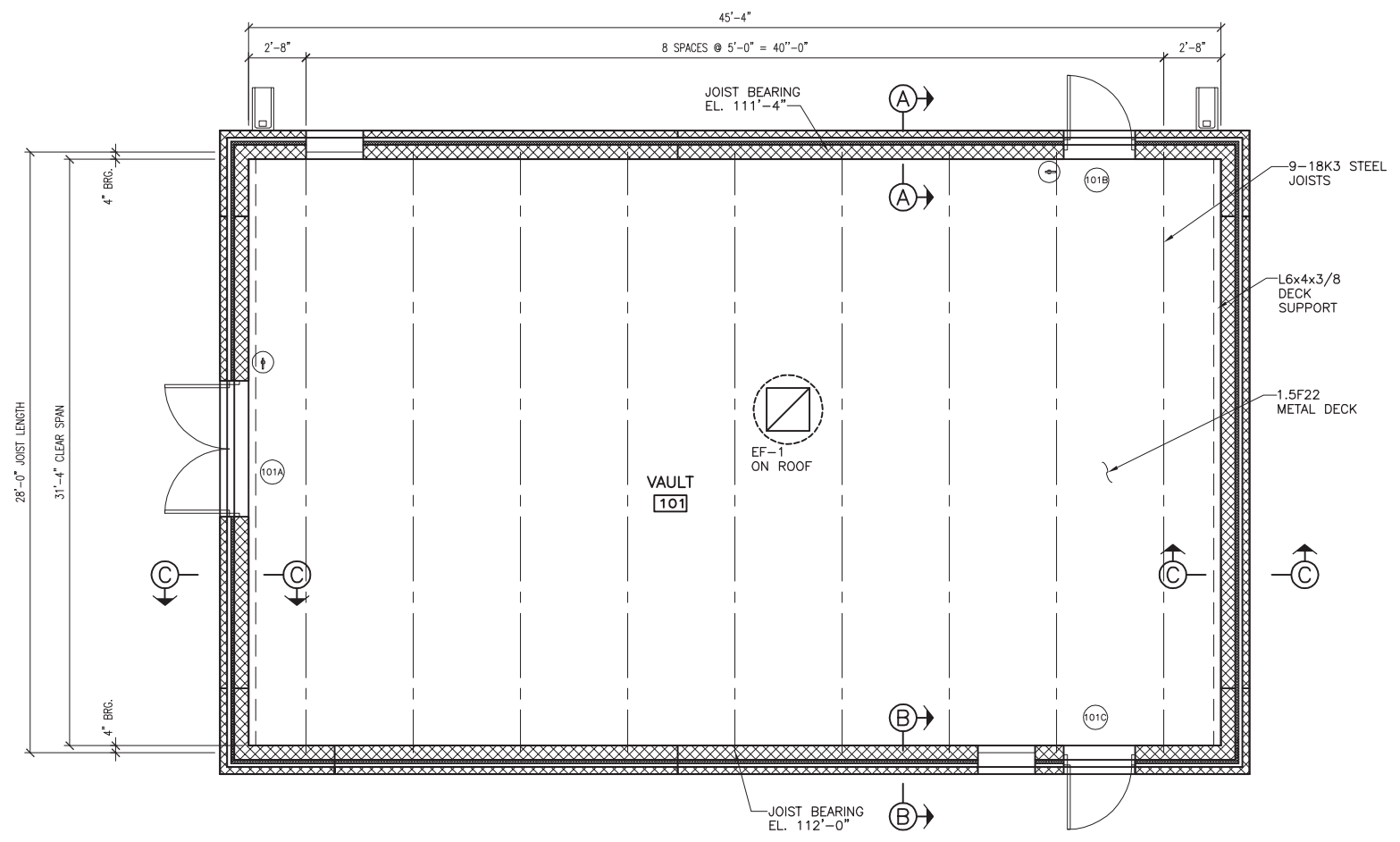
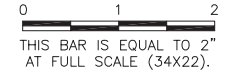
STEEL JOIST NOTES

1. THE MANUFACTURING, DETAILING AND ERECTING OF STEEL JOISTS SHALL BE IN ACCORDANCE WITH STEEL JOIST INSTITUTE (SJI), K SERIES SPECIFICATIONS.
2. JOIST BRIDGING SHALL BE STANDARD SJI BRIDGING UNLESS SHOWN OTHERWISE ON THE DRAWINGS.
3. JOIST SPACING AND LAYOUT SHALL BE AS INDICATED ON THE DRAWINGS.
4. JOIST BEARING SHALL BE STANDARD SJI BEARINGS UNLESS SHOWN OTHERWISE ON THE DRAWINGS.
5. BEARING CONNECTIONS SHALL BE DESIGNED TO RESIST A MINIMUM OF 2.0 KIPS LATERAL LOADS AND 3.0 KIPS VERTICAL UPLIFT LOADS FOR EACH BEARING.

UN051

REVISIONS

NUMBER	BY	DATE

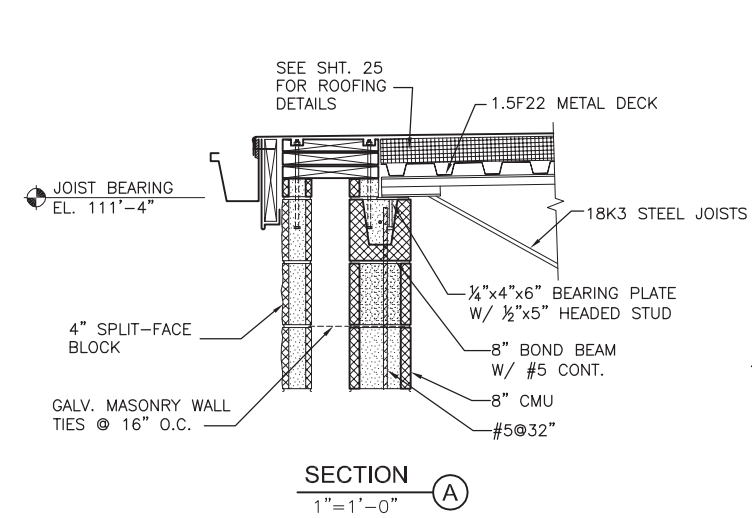


ROOF FRAMING PLAN
 1/4" = 1'-0"

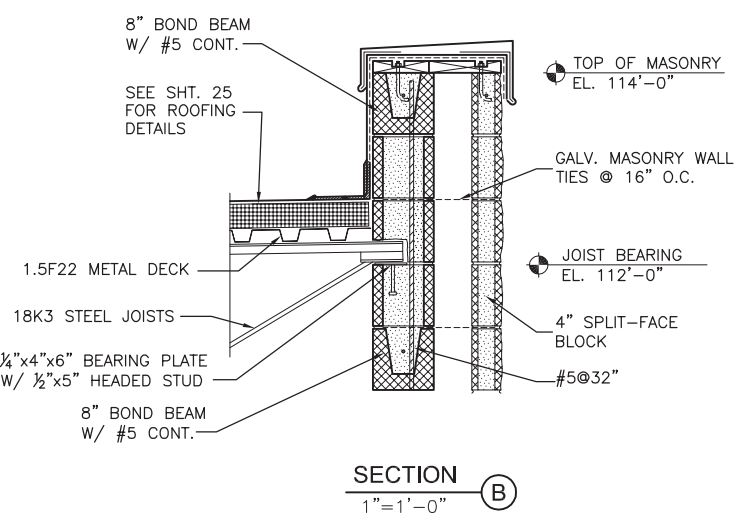
WILLARD AIRPORT
UNIVERSITY OF ILLINOIS
NEW AIRFIELD LIGHTING VAULT
ROOF FRAMING PLAN & DETAILS

© Copyright CMT, Inc.
CMT
 CRAWFORD, MURPHY & TILLY, INC.
 CONSULTING ENGINEERS
 License No. 184-000613

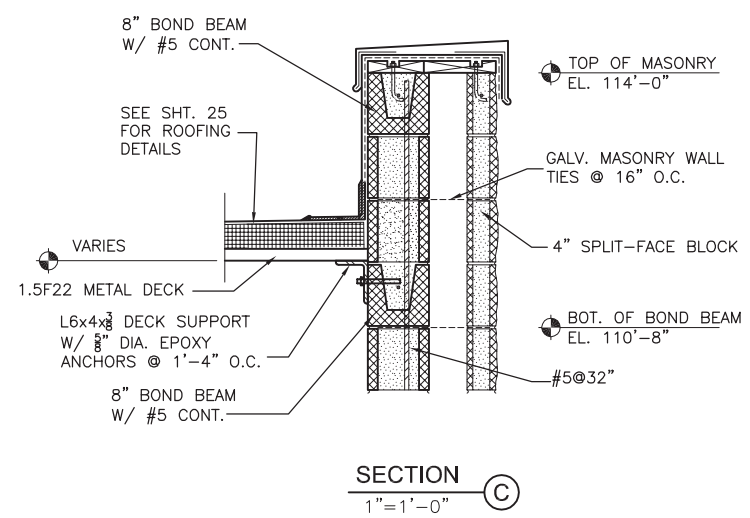
DESIGN BY:	JEL
DRAWN BY:	CMT
CHECKED BY:	JJF
APPROVED BY:	JJF
DATE:	APRIL 20, 2012
JOB No:	11059-03
IL PROJ. NO.	CMI-4100
AIP PROJ. NO.	3-17-0016-XX
SHEET	42 OF 60 SHEETS



SECTION A
 1" = 1'-0"



SECTION B
 1" = 1'-0"



SECTION C
 1" = 1'-0"