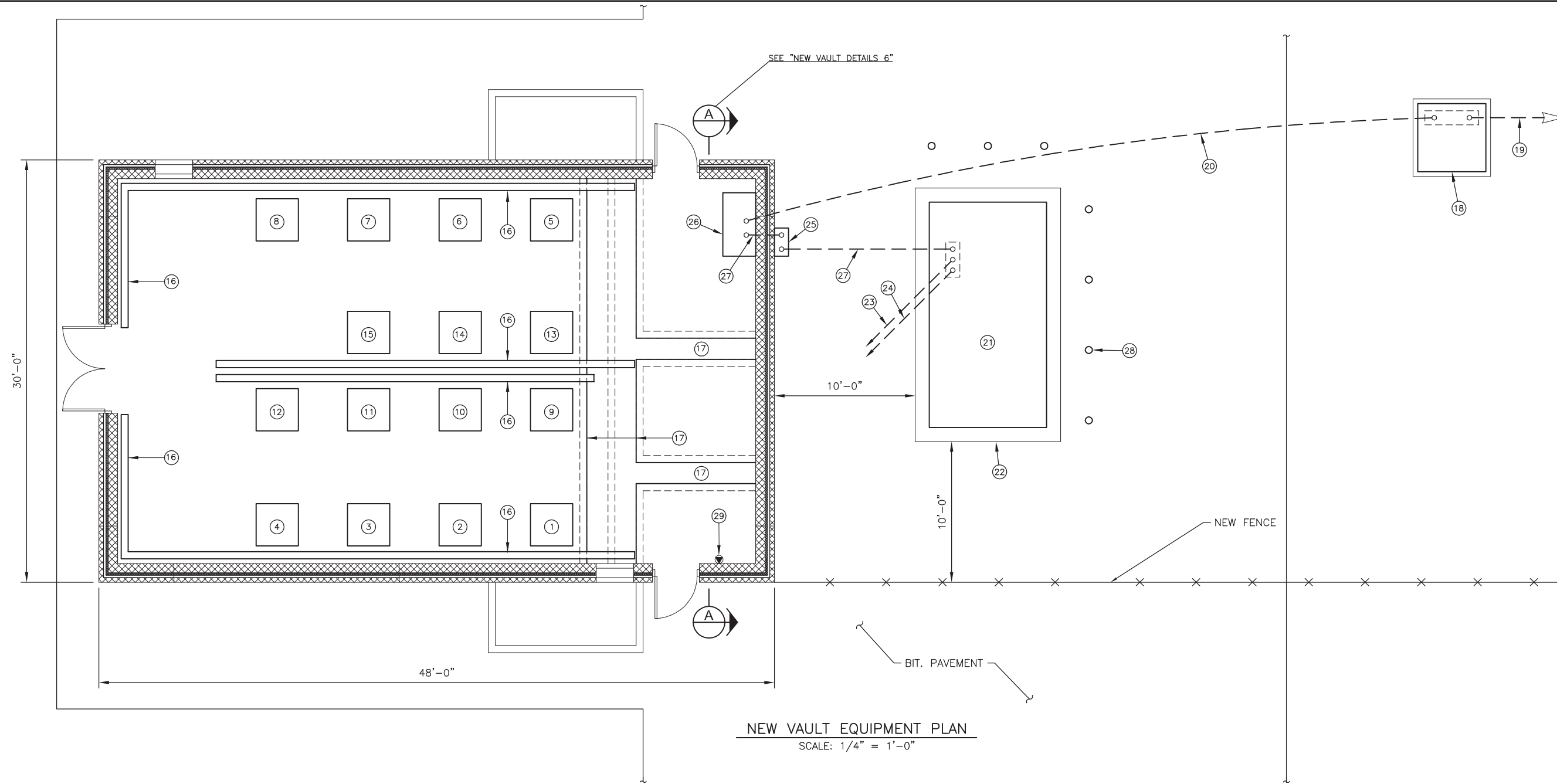


UN051

REVISIONS		
NUMBER	BY	DATE

0 1 2
 THIS BAR IS EQUAL TO 2"
 AT FULL SCALE (34X22).



NEW VAULT EQUIPMENT PLAN
 SCALE: 1/4" = 1'-0"

NOTES

- NEW RUNWAY 14L/32R REGULATOR (CKT. R2), L-829, 50 KW, 480V INPUT, 5-STEP 20A OUTPUT. 480V POWER WIRING: TWO #2/0 THWN, ONE #6 GROUND. PROVIDE ENGRAVED NAMEPLATE READING "RWY 14L/32R".
- RELOCATED "SPARE" REGULATOR #1, 50 KW, 480V INPUT, 5-STEP 20A OUTPUT. 480V POWER WIRING: TWO #2/0 THWN, ONE #6 GROUND. (SPARE REGULATOR FOR RUNWAY 14L/32R.) PROVIDE ENGRAVED NAMEPLATE READING "SPARE #1".
- NEW RUNWAY 14R/32L REGULATOR (CKT. R4), L-829, 15 KW, 480V INPUT, 3-STEP 6.6A OUTPUT. 480V POWER WIRING: TWO #8 THWN, ONE #10 GROUND. PROVIDE ENGRAVED NAMEPLATE READING "RWY 14R/32L".
- RELOCATED "SPARE" REGULATOR #2, 15 KW, 240V INPUT, 3-STEP 6.6A OUTPUT. 240V POWER WIRING: TWO #3 THWN, ONE #8 GROUND. (SPARE REGULATOR FOR RUNWAY 14R/32L.) PROVIDE ENGRAVED NAMEPLATE READING "SPARE #2".
- NEW RUNWAY 18/36 REGULATOR (CKT. R1), L-829, 10 KW, 480V INPUT, 3-STEP 6.6A OUTPUT. 480V POWER WIRING: TWO #8 THWN, ONE #10 GROUND. PROVIDE ENGRAVED NAMEPLATE READING "RWY 18/36".
- RELOCATED "SPARE" REGULATOR #3, 15 KW, 240V INPUT, 3-STEP 6.6A OUTPUT. 240V POWER WIRING: TWO #3 THWN, ONE #8 GROUND. (SPARE REGULATOR FOR RUNWAY 18/36.) PROVIDE ENGRAVED NAMEPLATE READING "SPARE #3".
- NEW RUNWAY 4/22 REGULATOR (CKT. R3), L-829, 10 KW, 480V INPUT, 5-STEP 6.6A OUTPUT. 480V POWER WIRING: TWO #8 THWN, ONE #10 GROUND.
- RELOCATED "SPARE" REGULATOR #4, 10 KW, 240V INPUT, 5-STEP 6.6A OUTPUT. 240V POWER WIRING: TWO #4 THWN, ONE #8 GROUND. (SPARE REGULATOR FOR RUNWAY 4R/22L.) PROVIDE ENGRAVED NAMEPLATE READING "SPARE #4".
- NEW TAXIWAY B (SW) REGULATOR (CKT. T7), L-829, 20 KW, 480V INPUT, 3-STEP 6.6A OUTPUT. 480V POWER WIRING: TWO #4 THWN, ONE #8 GROUND. PROVIDE ENGRAVED NAMEPLATE READING "TXY B (SW)".
- RELOCATED "SPARE" REGULATOR #5, 20 KW, 240V INPUT, 3-STEP 6.6A OUTPUT. 240V POWER WIRING: TWO #1/0 THWN, ONE #6 GROUND. (SPARE REGULATOR FOR TAXIWAY B, TAXIWAY C AND TAXIWAY A.) PROVIDE ENGRAVED NAMEPLATE READING "SPARE #5".
- NEW TAXIWAY C (NW) REGULATOR (CKT. T2/3), L-829, 15 KW, 480V INPUT, 3-STEP 6.6A OUTPUT. 480V POWER WIRING: TWO #8 THWN, ONE #10 GROUND. PROVIDE ENGRAVED NAMEPLATE READING "TXY C (NW)".
- NEW TAXIWAY A (SE) REGULATOR (CKT. T4/5), L-829, 15 KW, 480V INPUT, 3-STEP 6.6A OUTPUT. 480V POWER WIRING: TWO #8 THWN, ONE #10 GROUND. PROVIDE ENGRAVED NAMEPLATE READING "TXY A (SE)".
- NEW CENTER TAXIWAY REGULATOR (CKT. T1), L-829, 10 KW, 480V INPUT, 3-STEP 6.6A OUTPUT. 480V POWER WIRING: TWO #8 THWN, ONE #10 GROUND. PROVIDE ENGRAVED NAMEPLATE READING "CENTER TXY".
- RELOCATED "SPARE" REGULATOR #6, 10 KW, 240V INPUT, 3-STEP 6.6A OUTPUT. 240V POWER WIRING: TWO #4 THWN, ONE #8 GROUND. (SPARE REGULATOR FOR BOTH CENTER TAXIWAY & TAXIWAY D.) PROVIDE ENGRAVED NAMEPLATE READING "SPARE #6".
- NEW TAXIWAY D (NE) REGULATOR (CKT. T8), L-829, 10 KW, 480V INPUT, 3-STEP 6.6A OUTPUT. 480V POWER WIRING: TWO #8 THWN, ONE #10 GROUND. PROVIDE ENGRAVED NAMEPLATE READING "TXY D (NE)".
- HIGH VOLTAGE AND LOW VOLTAGE 6"x6" NEMA 1 HINGED COVER WIREWAYS, TWO DOWN THE MIDDLE AND TWO ALONG EACH WALL.
- IN-FLOOR CABLE TRENCH WITH REMOVABLE COVER.
- 300 KVA PAD MOUNT TRANSFORMER 4160V 3-PHASE PRIMARY, 277Y/480V, 3-PHASE, 4-WIRE SECONDARY, FURNISHED BY ELECTRICAL CONTRACTOR AND INSTALLED ON CONCRETE PAD INSTALLED BY UNIVERSITY FORCES.
- 4160V PRIMARY WIRING AND CONDUIT INSTALLED BY UNIVERSITY FORCES.
- TWO 4" SCHEDULE 40 PVC CONDUITS, EACH WITH THREE 350 MCM 600V THWN, ONE 350 MCM NEUTRAL.
- 250KW/300KVA, 277Y/480V, 3-PHASE, 4-WIRE STANDBY GENERATOR WITH 600A MAIN CIRCUIT BREAKER, IN WEATHERPROOF HOUSING, WITH 300 GALLON (NOMINAL) BASE-MOUNTED FUEL TANK (24 HOURS CAPACITY AT 3/4 LOAD).
- CONCRETE PAD FOR STANDBY GENERATOR, EXTENDING 1'-0" PAST GENERATOR BASE ON ALL SIDES. CONCRETE PAD THICKNESS SHALL BE AS REQUIRED BY GENERATOR MANUFACTURER, WITH MINIMUM OF SIX 12" DIAMETER BY 48" DEEP FROST LEGS. ELECTRICAL CONTRACTOR SHALL PROVIDE A DRAWING OF CONCRETE PAD WITH GENERATOR SUBMITTAL.
- WIRING AS REQUIRED TO L-890 SYSTEM DCMU UNIT IN VAULT IN 1" GRS CONDUIT.
- #14 THWN CONDUCTORS AS REQUIRED IN 1" GRS CONDUIT TO NFPA 110 ANNUNCIATOR PANEL IN VAULT.
- 600A, 3P, 600V UNFUSED DISCONNECT IN NEMA 3R ENCLOSURE. MOUNT TO VAULT WALL VIA STRUT-TYPE FRAMING. PROVIDE ENGRAVED NAMEPLATE READING "STANDBY GENERATOR DISCONNECT".
- SERVICE ENTRANCE AUTOMATIC TRANSFER SWITCH, 600A, 277Y/480V, 3P, 4W IN NEMA 1 ENCLOSURE.
- TWO 4" GRS CONDUITS, EACH WITH THREE 350 MCM 600V THWN, ONE 350 MCM NEUTRAL, ONE #1/0 GROUND.
- 6" BOLLARDS, MIN. 48" ABOVE PAVEMENT, PAINTED YELLOW (TYP.).
- TELEPHONE RJ-11 JACK. ELECTRICAL CONTRACTOR SHALL INSTALL CONDUIT AND WIRING INSIDE AND OUTSIDE VAULT AS REQUIRED BY PHONE COMPANY TO PROVIDE PHONE SERVICE TO VAULT.

WILLARD AIRPORT
UNIVERSITY OF ILLINOIS
NEW AIRFIELD LIGHTING VAULT
NEW VAULT EQUIPMENT PLAN

© Copyright CMT, Inc.
CMT
 CRAWFORD, MURPHY & TILLY, INC.
 CONSULTING ENGINEERS
 License No. 184-000613

DESIGN BY:	WDP
DRAWN BY:	CMT
CHECKED BY:	JEH
APPROVED BY:	JEH
DATE:	APRIL 20, 2012
JOB No:	11059-03
IL. PROJ. NO. CMI-4100 AIP PROJ. NO. 3-17-0016-XX	
SHEET 47 OF 60 SHEETS	