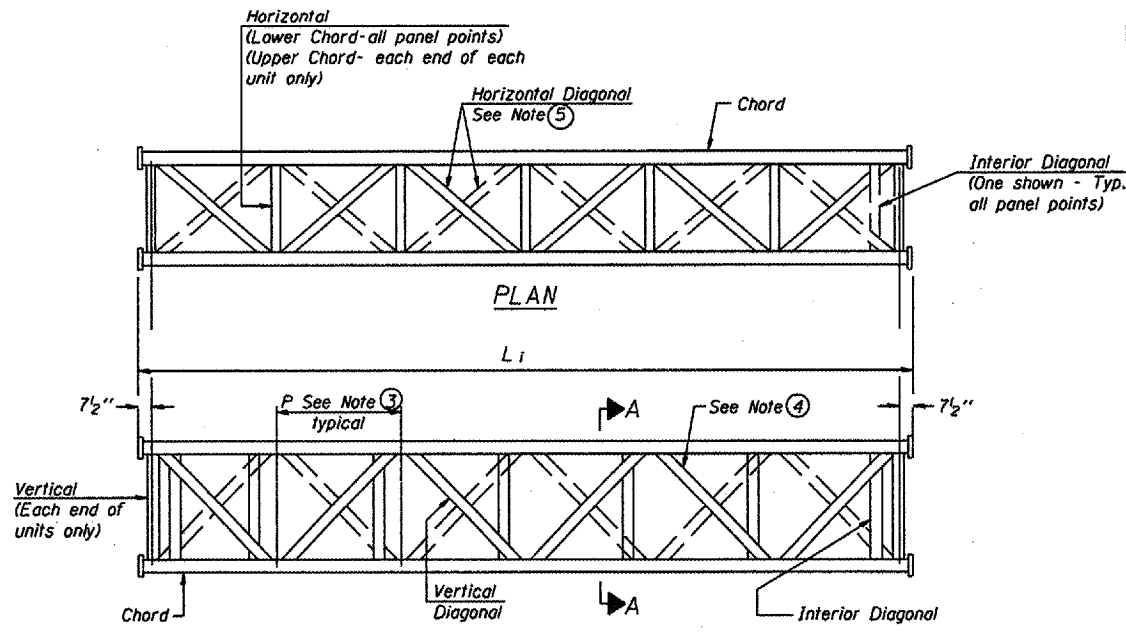
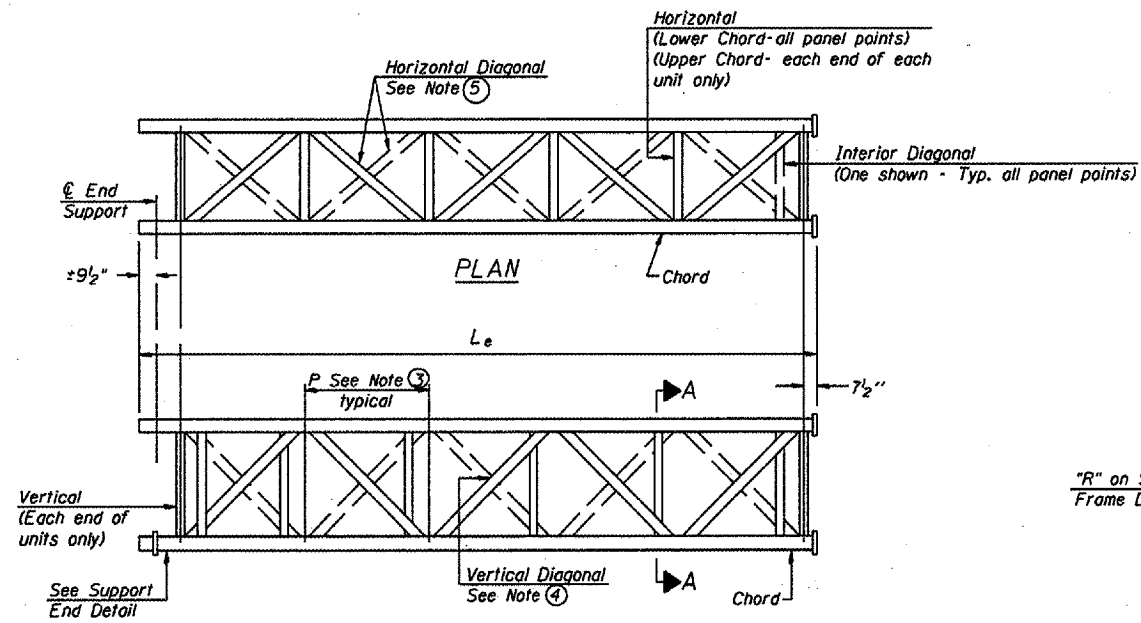


STATE OF ILLINOIS  
DEPARTMENT OF TRANSPORTATION

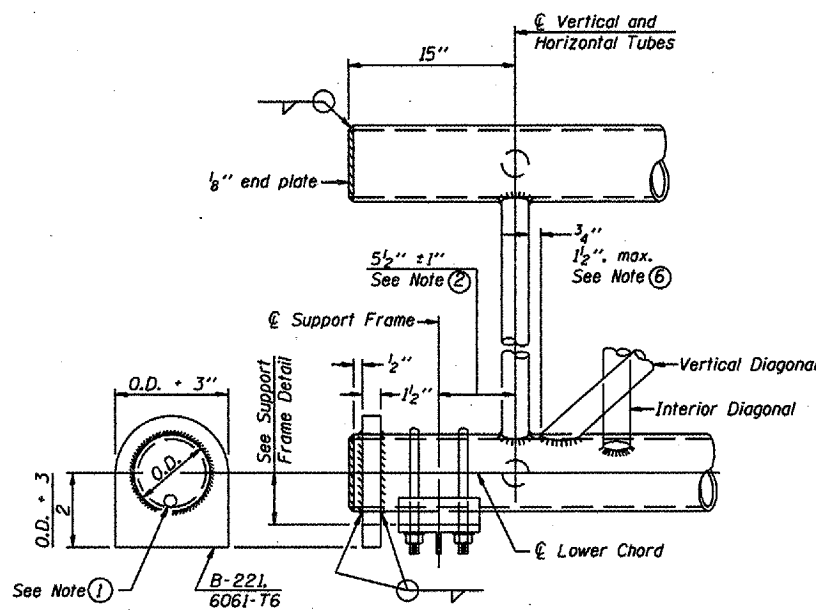
Various Routes  
OVD SIN STR REP & REPL 2006-9  
Various Counties  
Sheet 34 of 89  
Contract Number 44904



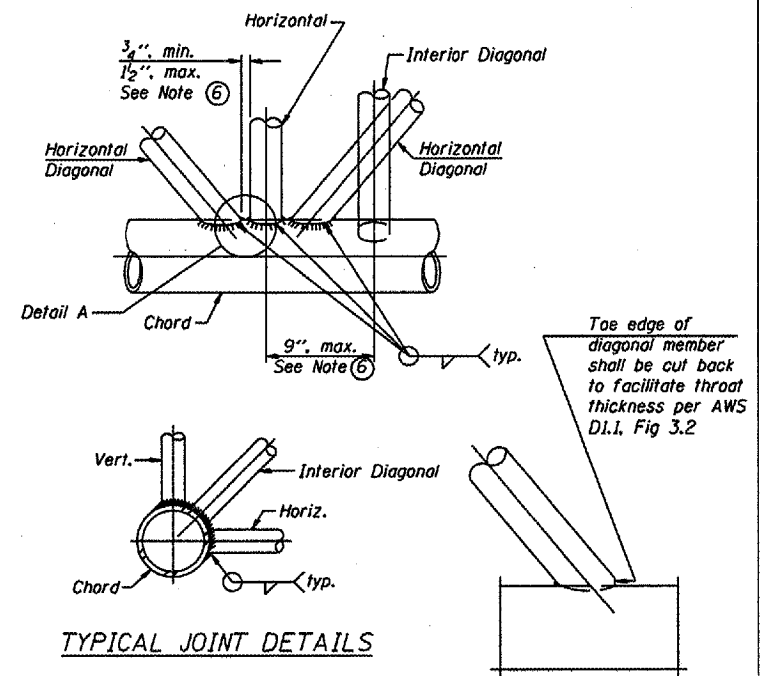
ELEVATION  
TYPICAL INTERIOR UNIT  
Even number of panels/interior unit required.



ELEVATION  
TYPICAL EXTERIOR UNIT  
Even or odd number of panels/exterior units allowed.



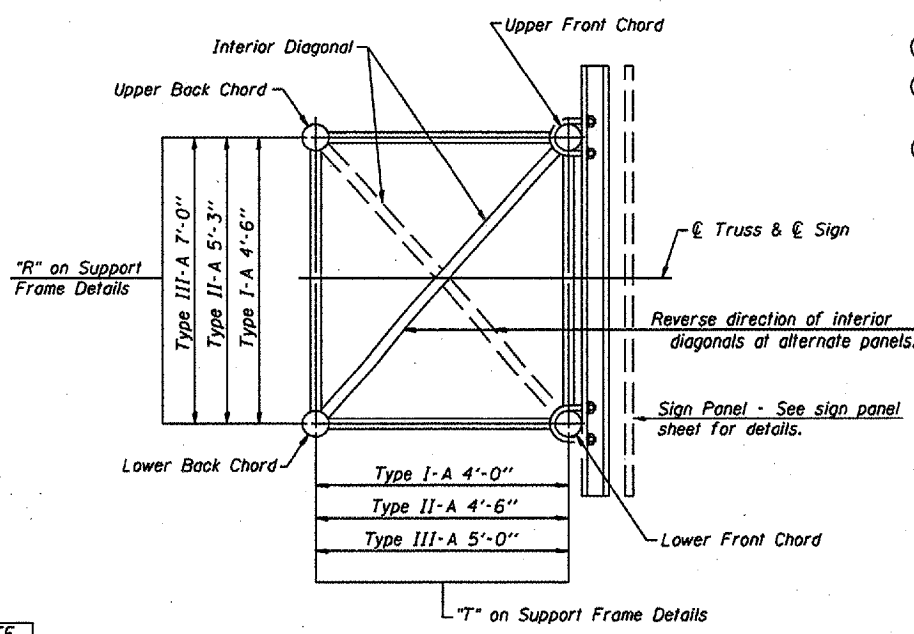
SUPPORT END DETAIL FOR EXTERIOR UNIT



TYPICAL JOINT DETAILS

DETAIL A

- NOTES
- Contractor may alternatively use standard aluminum drive-fit cap to close end. 1/2" Ø drain hole in end plate/drive-fit cap. (Typ. at ends of all chords)
  - 5 1/2" end dimension may vary by ±1" to provide uniform panel spacing (P).
  - Panel spacing (P) shall be uniform for entire truss and between 4'-0" and 5'-0" for Type I-A or 4'-0" and 5'-6" for Types II-A and III-A.
  - Vertical Diagonals in front and back face shall alternate.
  - Hidden lines show wind bracing alternates direction between planes of top and bottom chords.
  - All diagonals shall be detailed for minimum offset from the panel point based on the following: Offset shall be such as to provide a 3/4" minimum to 1 1/2" maximum clearance between any diagonal and any horizontal or vertical member, and to provide clearance for U-bolt connections of signs or walkway brackets.



SECTION A-A

OVERHEAD SIGN STRUCTURES  
ALUMINUM TRUSS DETAILS  
FOR TRUSS TYPES I-A, II-A and III-A

District 3  
Overhead Sign  
Structure Replacement

DESIGNED -	20
CHECKED -	EXAMINED
DRAWN -	PASSED
CHECKED -	ENGINEER OF BRIDGES AND STRUCTURES

NUMBER	REVISION	DATE

OS-A-2 1-7-05